

CORNERSTONE
WERRIBEE



YOUR CORNER OF THE WORLD.

Explore your new community.

cornerstonewerribee.com.au

PEET

THE FOUNDATION FOR A GREAT LIFE.

There's a quiet corner of the world with a community that feels like family.

Cornerstone is where you can truly belong. Already established and nestled in the vibrant suburb of Werribee, it's close to everything you could want, with a unique sense of calm.

Everyday life is made easy with shops, schools and cafes only a stone's throw away. On weekends you can also choose to stay local, with memories to be made at nearby spots like Shadowfax Winery and Werribee Open Range Zoo.

And simply step out your front door any time to enjoy a walk, run or cycle along the beautiful streets bursting with colour, or the paths and trails waiting to be explored.

Cornerstone is a breath of fresh air.

You'll find yourself waving to neighbours and chatting away while the kids entertain themselves with exciting outdoor adventures.

Your little ones will be swinging and clambering through Safari Park one day then climbing giant boulders and ropes at Raffles Walk Park the next – it's just how childhoods were meant to be.

Cornerstone is where you'll want to lay down roots and delight in the comfort of coming home.

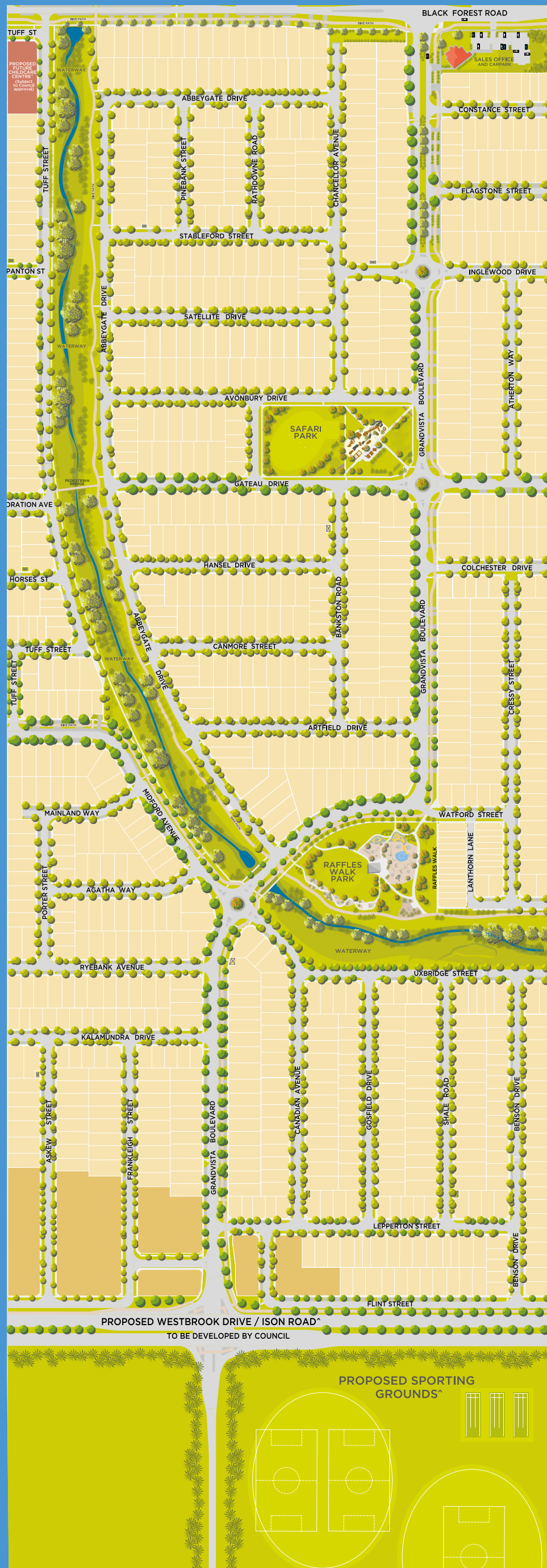
FUN-FILLED PLAYGROUNDS.

Peet has created two fun and exciting playgrounds at Cornerstone. These thoughtfully designed parks were created for both children and parents to enjoy.

Cornerstone's Safari Park is inspired by the nearby Werribee Open Range Zoo. Kids love playing hide and seek among the giant animal sculptures, while the shade-covered picnic areas are perfect for the whole family.

Raffles Walk Park is another one you won't want to miss! Climbers of all ages love this park featuring huge boulders and a climbing course with ropes, plus a lookout tower with slides. Set against Cornerstone's peaceful waterway, there are also spaces to just sit back and relax.

We know your family will enjoy these playgrounds as much as we do!



■ Current/Previous Residential
 ■ Proposed Future Residential
■ Proposed Future Childcare Centre^ (Subject to Council approval)

Discover more.

Visit the Sales and Information Centre

383 Black Forest Road, Werribee.

Or call 0439 394 466

 CornerstoneWerribee

cornerstonewerribee.com.au

^Proposed and potential future amenities are provided for in the Black Forest Road South Precinct Structure Plan April 2013 and the Black Forest Road North Precinct Structure Plan December 2015 (the PSPs) which have been prepared by the Metropolitan Planning Authority and are long-term plans for urban development. They describe how the land is expected to be developed and how and where services are planned to support development. Peet has no involvement in decision making as to plans, specifications, timing or whether they proceed or not of the proposed sporting grounds or the proposed Westbrook Drive/Ison Road and these will all be delivered by third parties. The proposed future childcare is subject to Council approval, delivery by third parties, site and market conditions, regulatory approvals, final plans and other factors. Purchasers should make their own inquiries before purchasing. This material has been prepared with care, however it is an indicative guide only and believed to be correct at the time of printing. All information (including but not limited to prices) is subject to change without notice at Peet's absolute discretion and cannot form part of any offer or contract. Peet reserves the right to resell, release and withhold certain packages from sale and any time. Whilst reasonable care has been taken in preparing this material, Peet, its representatives, employees and agents cannot be held responsible for any inaccuracies and this material should not be relied upon, as no warranty or representation is given or to be construed. Purchasers should obtain all necessary and relevant information carefully, make their own inquiries and obtain independent advice before proceeding. Areas and dimensions are approximates only and subject to survey and title registration dates are approximates only and subject to regulatory approvals and factors beyond Peet's control. March 2025 version. Peet Estates (VIC) Pty Ltd.

PEET