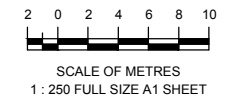
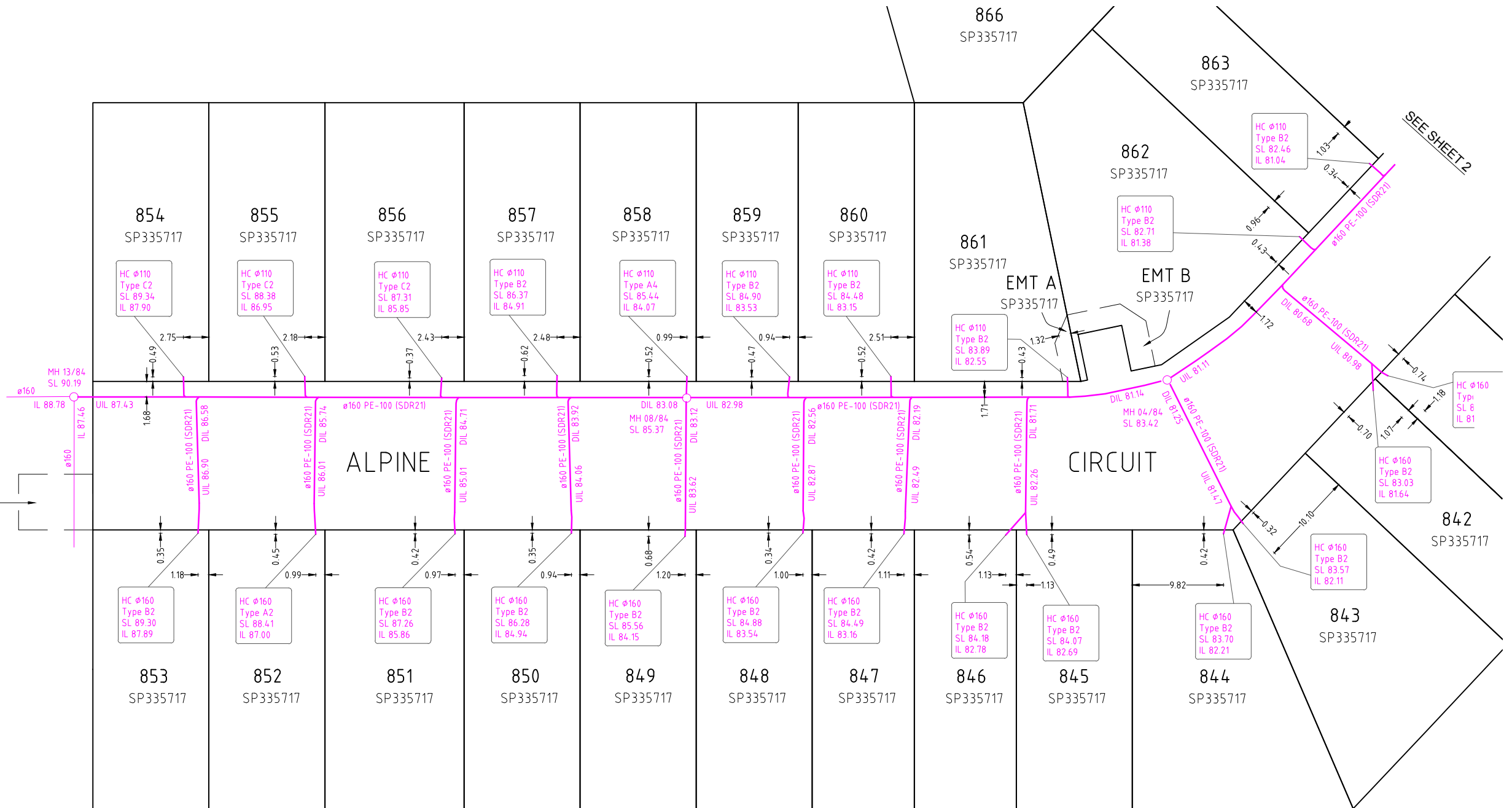




7000
SP327900

EMT C
SP335717



A1

REV NO	DATE	REVISION PURPOSE / DESCRIPTION	DRAWN	RPEQ	RPEQ No
A	05.03.2025	Builders Issue			

DRAWN	CM	18.02.2025
CHECKED	JE	04.03.2025
APPROVED		

saunders havill group
 Saunders Havill Group Pty Ltd ABN 24 144 572 540
 head office 9 Thompson St Bowen Hills Q 4006
 phone 090 83 5142 web www.saundershavill.com
 ■ surveying ■ town planning ■ urban design ■ environmental management ■ landscape architecture



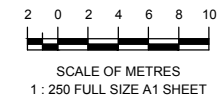
EDEN'S CROSSING ESTATE - STAGE 17
 ALPINE CIRCUIT, REDBANK PLAINS
 PLAN OF ADAC SURVEY DATA
 SEWERAGE RETICULATION 22-PNT-56639

DRAWING STATUS	
AS CONSTRUCTED	
SHEET 1 OF 3 SHEETS	
DRAWING NO.	REV.
	A

Drawing No: 9112 S 61 AC A



857 SP335717	858 SP335717	859 SP335717	860 SP335717	861 SP335717	862 SP335717
-----------------	-----------------	-----------------	-----------------	-----------------	-----------------



A1									
REV NO	DATE	REVISION PURPOSE / DESCRIPTION	DRAWN	RPEQ	RPEQ No	INITIALS	DATE		
A	05.03.2025	Builders Issue							

DRAWN	CM	18.02.2025
CHECKED	JE	04.03.2025
APPROVED		

SH saunders havill group
 Saunders Havill Group Pty Ltd ABN 24 144 592 540
 head office 9 Thompson St Bowen Hills Q 4006
 phone 090 433 5142 web www.saundershavill.com
 ■ surveying ■ town planning ■ urban design ■ environmental management ■ landscape architecture

Drawing No: 9112 S 61 AC A



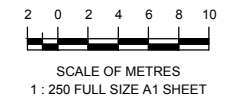
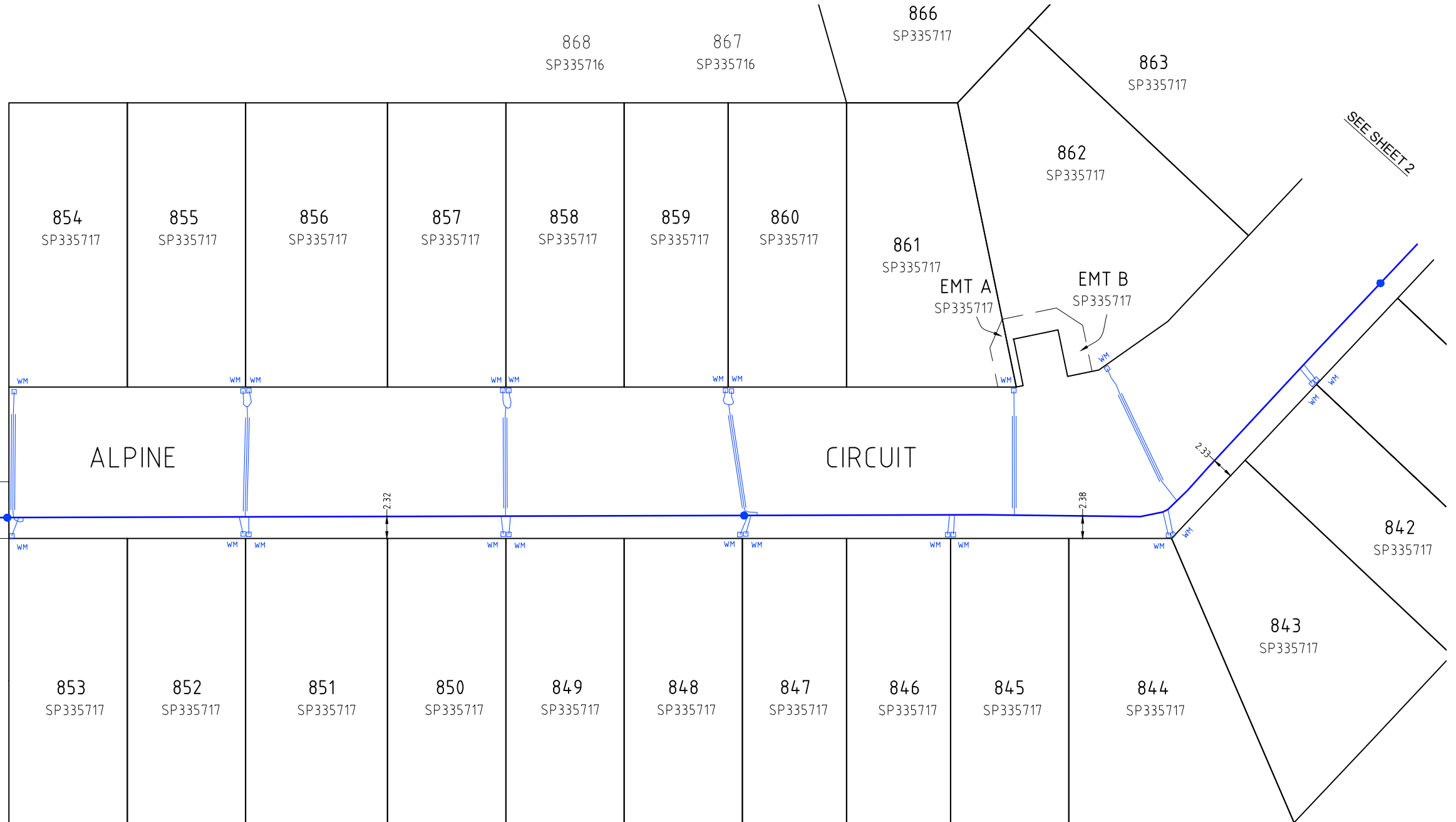
EDEN'S CROSSING ESTATE - STAGE 17
ALPINE CIRCUIT, REDBANK PLAINS
PLAN OF ADAC SURVEY DATA
SEWERAGE RETICULATION 22-PNT-56639

DRAWING STATUS	
AS CONSTRUCTED	
SHEET 3 OF 3 SHEETS	
DRAWING NO.	REV.
	A



7000
SP327900

EMT C
SP335717



A1

REV NO	DATE	REVISION PURPOSE / DESCRIPTION	DRAWN	RPEQ	RPEQ No
A	05.03.2025	Builders Issue			

DRAWN	CM	18.02.2025
CHECKED	JE	04.03.2025
APPROVED		
	INITIALS	DATE

SH saunders havill group
 Saunders Havill Group Pty Ltd ABN 24 144 572 540
 head office 9 Thompson St Bowen Hills Q 4006
 phone: 0900 633 5142 web: www.saundershavill.com
 ■ surveying ■ town planning ■ urban design ■ environmental management ■ landscape architecture

Drawing No: 9112 S 61 AC A



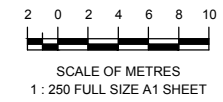
EDEN'S CROSSING ESTATE - STAGE 17
 ALPINE CIRCUIT, REDBANK PLAINS
 PLAN OF ADAC SURVEY DATA
 WATER RETICULATION 22-PNT-56639

DRAWING STATUS AS CONSTRUCTED	
SHEET 1 OF 3 SHEETS	
DRAWING NO.	REV. A



SEE SHEET 1

SEE SHEET 3



A1

REV NO	DATE	REVISION PURPOSE / DESCRIPTION	DRAWN	RPEQ	RPEQ No
A	05.03.2025	Builders Issue			

DRAWN	CM	18.02.2025
CHECKED	JE	04.03.2025
APPROVED		

SH saunders havill group
 Saunders Havill Group Pty Ltd ABN 54 144 572 540
 head office 9 Thompson St Bowen Hills Q 4006
 phone 090 453 5142 web www.saundershavill.com
 ■ surveying ■ town planning ■ urban design ■ environmental management ■ landscape architecture



EDEN'S CROSSING ESTATE - STAGE 17
 ALPINE CIRCUIT, REDBANK PLAINS
 PLAN OF ADAC SURVEY DATA
 WATER RETICULATION 22-PNT-56639

DRAWING STATUS AS CONSTRUCTED	
SHEET 2 OF 3 SHEETS	
DRAWING NO.	REV. A

Drawing No: 9112 S 61 AC A

