



LEGEND

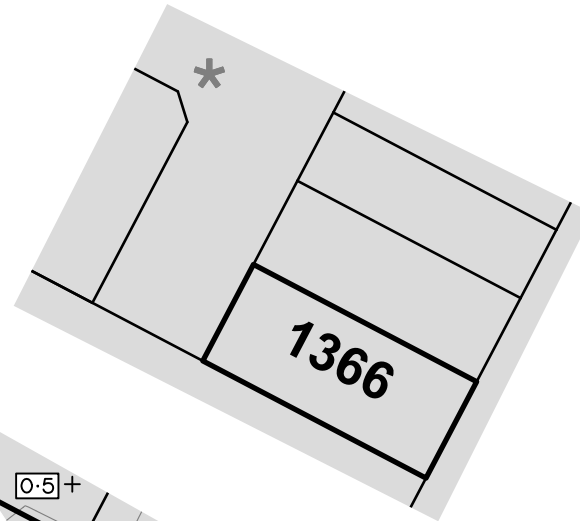
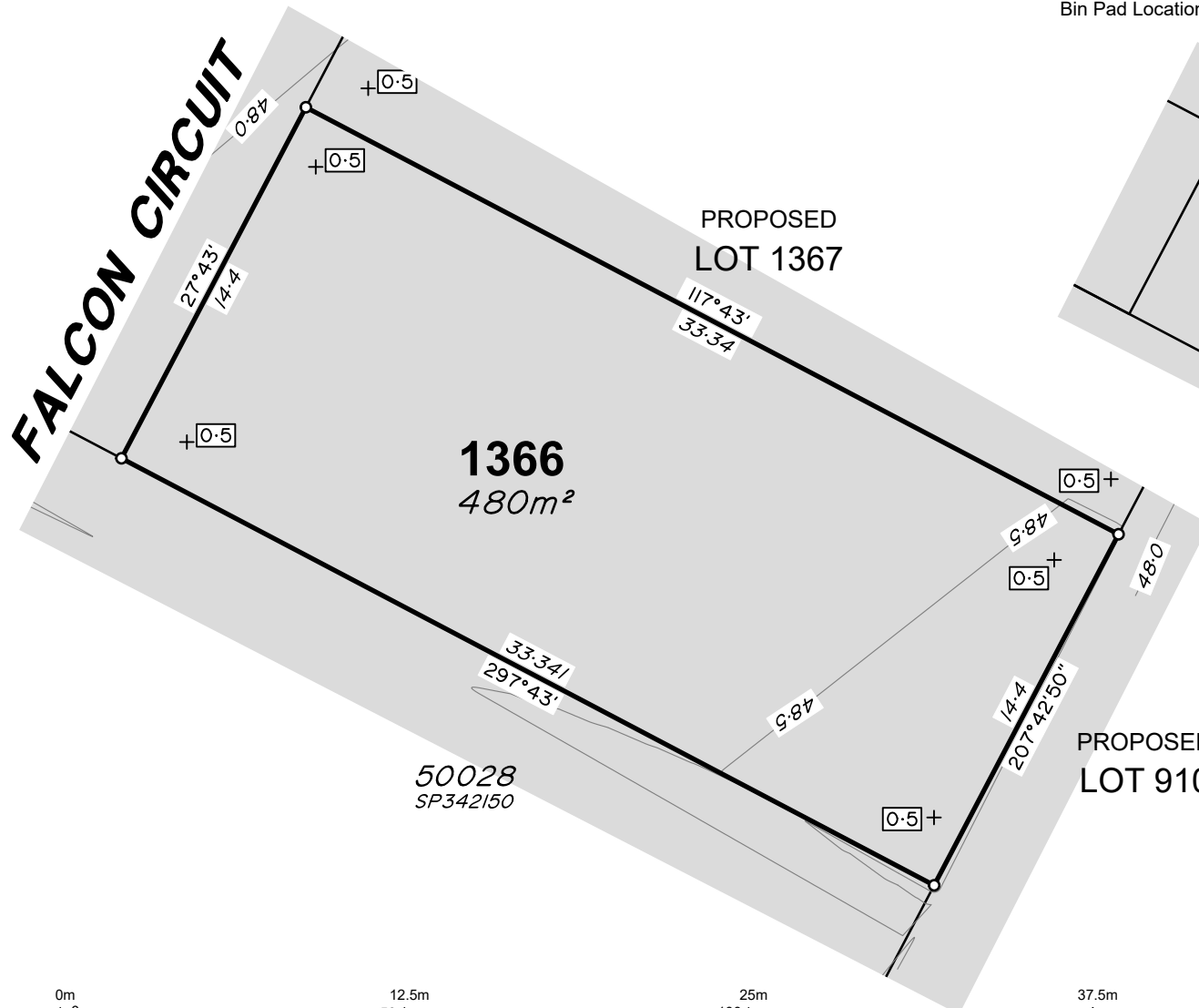
Final surface contours based on A.H.D. datum at an interval of 0.5m, shown as: $\text{---} 15.5 \text{---}$

Where applicable, areas to be filled are shown as:

Depth of fill, in metres, shown as: $\text{+ } 0.5$

Retaining wall and retaining wall height, shown on the lower side of the wall, have been calculated from digital data supplied by Colliers and shown as: $\text{---} (1.2) \text{---}$

Bin Pad Location shown as: *



BIN LOCATION

ADDITIONAL NOTES:

The LOT dimensions and area shown hereon are subject to final field survey and also to the requirements of Council and any other authority which may have requirements under any relevant legislation.

Final surface contours shown hereon have been supplied by Colliers.

Location of retaining walls are as shown on Engineering design drawings. Their as-constructed location may differ from their design location. Retaining wall heights have been supplied by Colliers.

Compaction of any fill material placed on this site shall be completed to level one inspection and testing services in accordance with AS3798-2007.

Depth of fill values are calculated to the pre-development surface.

January 2024

FLAGSTONE PRECINCT 1 STAGE 3H For PEET FLAGSTONE CITY PTY LTD

IMPORTANT NOTES:
(These notes are an integral part of this plan)
This plan has been prepared for PEET FLAGSTONE CITY PTY LTD for the purposes of a Disclosure Plan Under the Land Sales Act 1984 (as amended). It is not to be used by any other person or corporation or for any other purposes and is subject to the following limitations:

Please refer to the approved Development Application for conditions relating to the LOT and to approved Operational Works drawings for services location and possible easements.

THESE DESIGNS AND DRAWINGS ARE COPYRIGHT AND ARE NOT TO BE USED OR REPRODUCED WITHOUT THE WRITTEN PERMISSION OF VERIS

Data Sources
Cadastral Boundaries: 30109-LC-Master(DE) FS94 2014.dwg
Final Surface Contours: FLAGSTONE - STAGE FGH - DISCLOSURE INFO - 16 11 2023 - Design Tin.dwg
Depth of fill: FLAGSTONE - STAGE FGH - DISCLOSURE INFO - 16 11 2023 - Depth Contours.dwg
Engineering design: 23-0143_X_BASE_DESIGN_3H.dwg

A	Original	22.12.23	RCS
Issue	Revisions	Date	Drawn

Locality:
Local Authority: Logan City Council
Horizontal Meridian: MGA Zone 56
Vertical Level Datum: AHD D
Scale: 1:250@ A4
Designed: Colliers
Drawn: RCS 22/12/2023
Checked: DE 10/1/2024
Plot Date: 10 Jan, 2024
Computer File Ref: 403109-S13H-DP-A.dwg

DISCLOSURE PLAN of Proposed Lot 1366 being part of Lot 910 on SP339534



veris

BRISBANE (07) 3666 4700 WHITSUNDAYS (07) 4945 6600

MACKAY (07) 4957 9700 CAIRNS (07) 4252 9400

veris.com.au
ACN 615 735 727
Veris Australia Pty Ltd

Drawing No 430109-DP-1366 Issue A



LEGEND

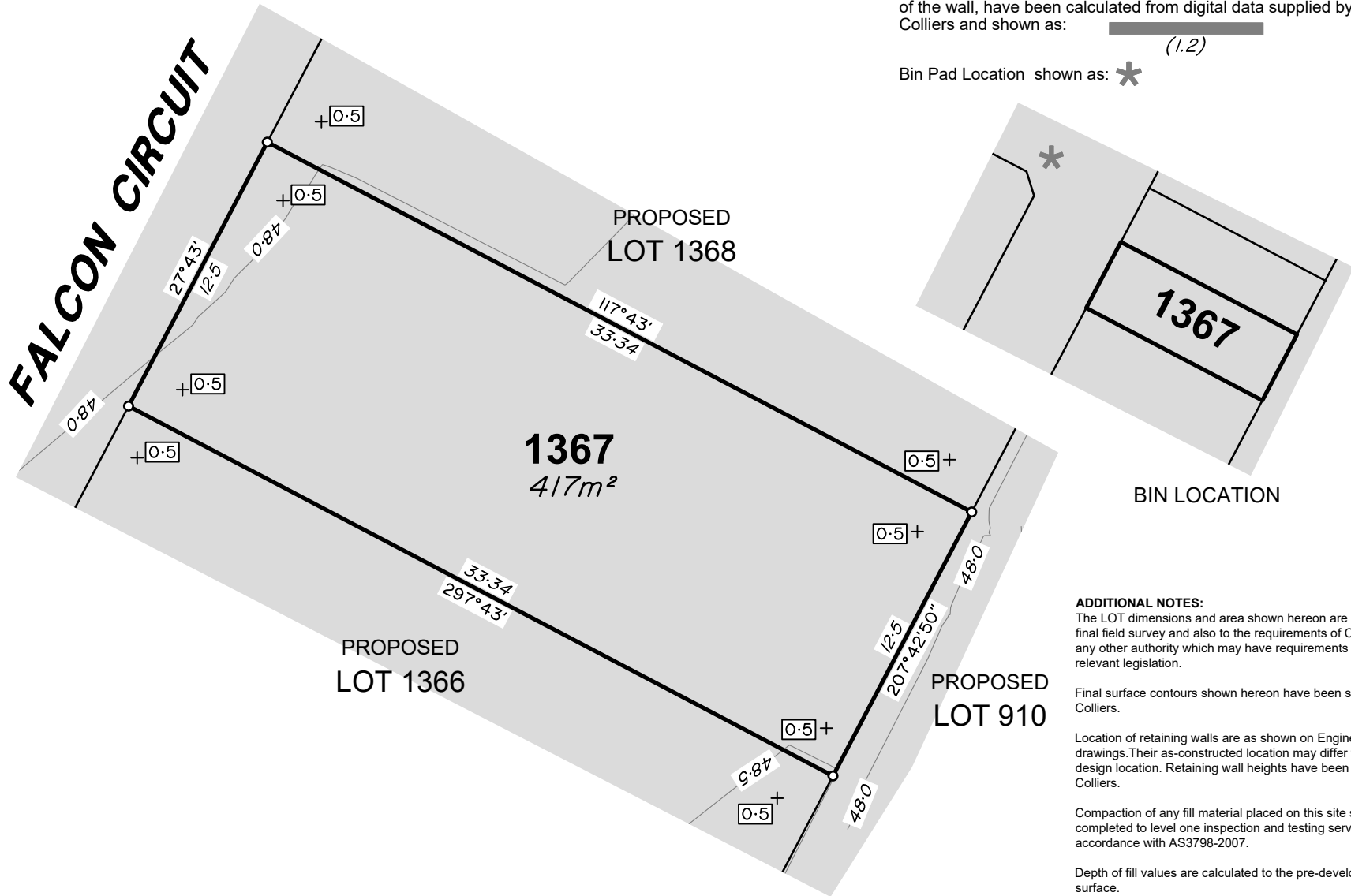
Final surface contours based on A.H.D. datum at an interval of 0.5m, shown as: $\text{---} 15.5 \text{---}$

Where applicable, areas to be filled are shown as:

Depth of fill, in metres, shown as: $\text{+ } 0.5$

Retaining wall and retaining wall height, shown on the lower side of the wall, have been calculated from digital data supplied by Colliers and shown as: $\text{---} (1.2) \text{---}$

Bin Pad Location shown as: *



FLAGSTONE PRECINCT 1 STAGE 3H For PEET FLAGSTONE CITY PTY LTD

IMPORTANT NOTES:
(These notes are an integral part of this plan)
This plan has been prepared for PEET FLAGSTONE CITY PTY LTD for the purposes of a Disclosure Plan Under the Land Sales Act 1984 (as amended). It is not to be used by any other person or corporation or for any other purposes and is subject to the following limitations:

Please refer to the approved Development Application for conditions relating to the LOT and to approved Operational Works drawings for services location and possible easements.

THESE DESIGNS AND DRAWINGS ARE COPYRIGHT AND ARE NOT TO BE USED OR REPRODUCED WITHOUT THE WRITTEN PERMISSION OF VERIS

Data Sources
Cadastral Boundaries: 30109-LC-Master(DE) FS94 2014.dwg
Final Surface Contours: FLAGSTONE - STAGE FGH - DISCLOSURE INFO - 16 11 2023 - Design Tin.dwg
Depth of fill: FLAGSTONE - STAGE FGH - DISCLOSURE INFO - 16 11 2023 - Depth Contours.dwg
Engineering design: 23-0143_X_BASE_DESIGN_3H.dwg

Issue	Revisions	Date	Drawn
A	Original	22.12.23	RCS

Locality:
Local Authority: Logan City Council
Horizontal Meridian: MGA Zone 56
Vertical Level Datum: AHD D
Scale: 1:250@ A4
Designed: Colliers
Drawn: RCS 22/12/2023
Checked: DE 10/11/2024
Plot Date: 10 Jan, 2024
Computer File Ref: 403109-S13H-DP-A.dwg

DISCLOSURE PLAN of Proposed Lot 1367 being part of Lot 910 on SP339534



veris

BRISBANE (07) 3666 4700 WHITSUNDAYS (07) 4945 6600

MACKAY (07) 4957 9700 CAIRNS (07) 4252 9400

veris.com.au
ACN 615 735 727
Veris Australia Pty Ltd

Drawing No 430109-DP-1367 Issue A

ADDITIONAL NOTES:
The LOT dimensions and area shown hereon are subject to final field survey and also to the requirements of Council and any other authority which may have requirements under any relevant legislation.

Final surface contours shown hereon have been supplied by Colliers.

Location of retaining walls are as shown on Engineering design drawings. Their as-constructed location may differ from their design location. Retaining wall heights have been supplied by Colliers.

Compaction of any fill material placed on this site shall be completed to level one inspection and testing services in accordance with AS3798-2007.

Depth of fill values are calculated to the pre-development surface.

January 2024





LEGEND

Final surface contours based on A.H.D. datum at an interval of 0.5m, shown as: 15.5

Where applicable, areas to be filled are shown as:

Depth of fill, in metres, shown as: - + 0.5

Retaining wall and retaining wall height, shown on the lower side of the wall, have been calculated from digital data supplied by Colliers and shown as: (1.2)

Bin Pad Location shown as: *

FALCON CIRCUIT

PROPOSED LOT 1369

1368

340m²

PROPOSED LOT 1367

PROPOSED LOT 910

BIN LOCATION

ADDITIONAL NOTES:
The LOT dimensions and area shown hereon are subject to final field survey and also to the requirements of Council and any other authority which may have requirements under any relevant legislation.

Final surface contours shown hereon have been supplied by Colliers.

Location of retaining walls are as shown on Engineering design drawings. Their as-constructed location may differ from their design location. Retaining wall heights have been supplied by Colliers.

Compaction of any fill material placed on this site shall be completed to level one inspection and testing services in accordance with AS3798-2007.

Depth of fill values are calculated to the pre-development surface.

January 2024

FLAGSTONE PRECINCT 1 STAGE 3H

For
PEET FLAGSTONE CITY PTY LTD

IMPORTANT NOTES:
(These notes are an integral part of this plan)
This plan has been prepared for PEET FLAGSTONE CITY PTY LTD for the purposes of A Disclosure Plan Under the Land Sales Act 1984 (as amended).
It is not to be used by any other person or corporation or for any other purposes and is subject to the following limitations:

Please refer to the approved Development Application for conditions relating to the LOT and to approved Operational Works drawings for services location and possible easements.

THESE DESIGNS AND DRAWINGS ARE COPYRIGHT AND ARE NOT TO BE USED OR REPRODUCED WITHOUT THE WRITTEN PERMISSION OF VERIS

Data Sources
Cadastral Boundaries: 30109-LC-Master(DE) FS94 2014.dwg
Final Surface Contours: FLAGSTONE - STAGE FGH - DISCLOSURE INFO - 16 11 2023 - Design Tin.dwg
Depth of fill: FLAGSTONE - STAGE FGH - DISCLOSURE INFO - 16 11 2023 - Depth Contours.dwg
Engineering design: 23-0143_X_BASE_DESIGN_3H.dwg

A	Original	22.12.23	RCS
Issue	Revisions	Date	Drawn

Locality:
Local Authority: Logan City Council
Horizontal Meridian: MGA Zone 56
Vertical Level Datum: AHD D
Scale: 1:250@ A4
Designed: Colliers
Drawn: RCS 22/12/2023
Checked: DE 10/1/2024
Plot Date: 10 Jan, 2024
Computer File Ref: 403109-S13H-DP-A.dwg

DISCLOSURE PLAN of Proposed Lot 1368 being part of Lot 910 on SP339534



veris

BRISBANE (07) 3666 4700 WHITSUNDAYS (07) 4945 6600

MACKAY (07) 4957 9700 CAIRNS (07) 4252 9400

veris.com.au
ACN 615 735 727
Veris Australia Pty Ltd

Drawing No 430109-DP-1368 Issue A





LEGEND

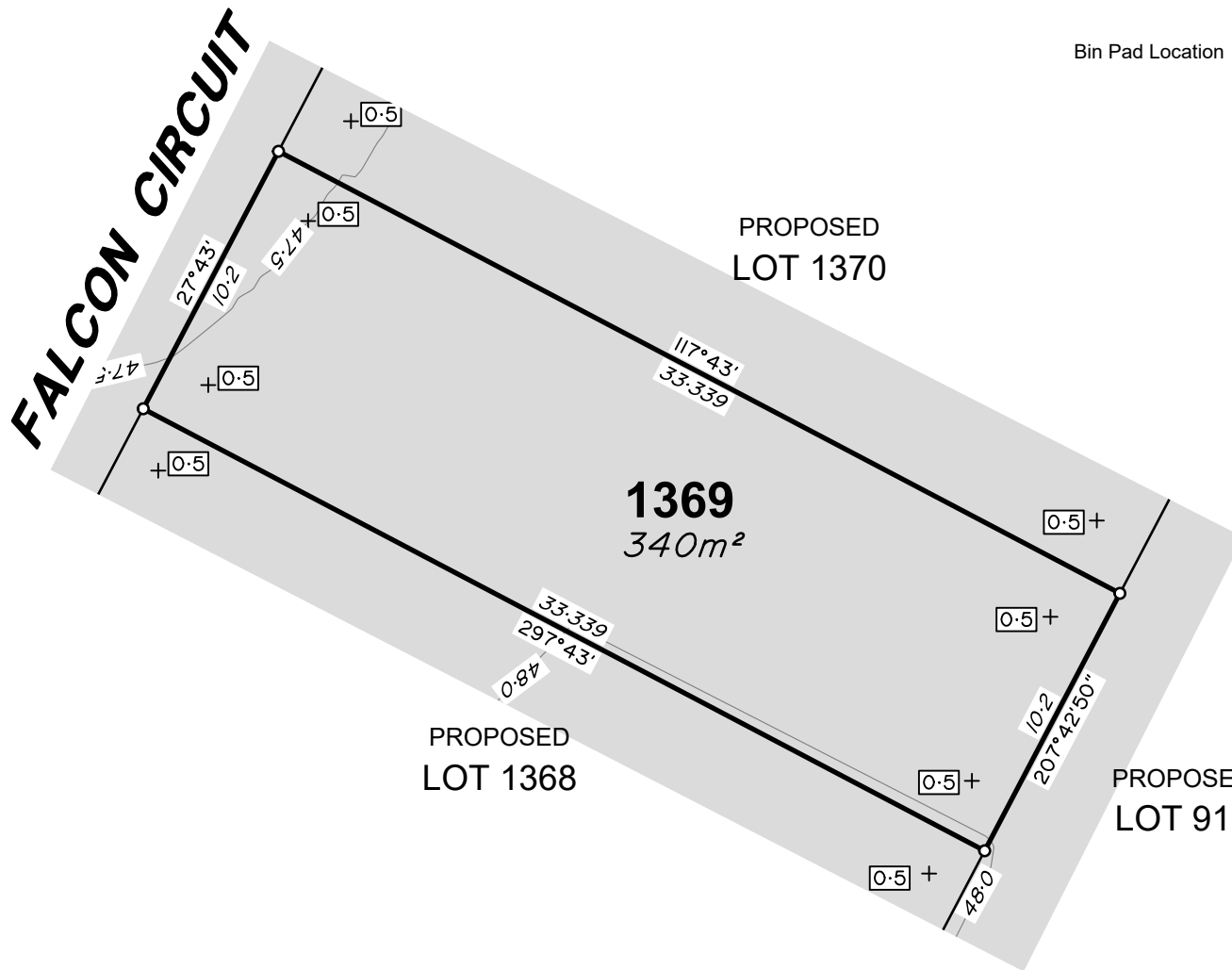
Final surface contours based on A.H.D. datum at an interval of 0.5m, shown as: 15.5

Where applicable, areas to be filled are shown as:

Depth of fill, in metres, shown as: +

Retaining wall and retaining wall height, shown on the lower side of the wall, have been calculated from digital data supplied by Colliers and shown as: (1.2)

Bin Pad Location shown as:



ADDITIONAL NOTES:
The LOT dimensions and area shown hereon are subject to final field survey and also to the requirements of Council and any other authority which may have requirements under any relevant legislation.

Final surface contours shown hereon have been supplied by Colliers.

Location of retaining walls are as shown on Engineering design drawings. Their as-constructed location may differ from their design location. Retaining wall heights have been supplied by Colliers.

Compaction of any fill material placed on this site shall be completed to level one inspection and testing services in accordance with AS3798-2007.

Depth of fill values are calculated to the pre-development surface.

January 2024

FLAGSTONE PRECINCT 1 STAGE 3H For PEET FLAGSTONE CITY PTY LTD

IMPORTANT NOTES:
(These notes are an integral part of this plan)
This plan has been prepared for PEET FLAGSTONE CITY PTY LTD for the purposes of a Disclosure Plan Under the Land Sales Act 1984 (as amended).
It is not to be used by any other person or corporation or for any other purposes and is subject to the following limitations:

Please refer to the approved Development Application for conditions relating to the LOT and to approved Operational Works drawings for services location and possible easements.

THESE DESIGNS AND DRAWINGS ARE COPYRIGHT AND ARE NOT TO BE USED OR REPRODUCED WITHOUT THE WRITTEN PERMISSION OF VERIS

Data Sources

Cadastral Boundaries:	30109-LC-Master(DE) FS94 2014.dwg
Final Surface Contours:	FLAGSTONE - STAGE FGH - DISCLOSURE INFO - 16 11 2023 - Design Tin.dwg
Depth of fill:	FLAGSTONE - STAGE FGH - DISCLOSURE INFO - 16 11 2023 - Depth Contours.dwg
Engineering design:	23-0143_X_BASE_DESIGN_3H.dwg

Issue	Revisions	Date	Drawn
A	Original	22.12.23	RCS

Locality:

Local Authority:	Logan City Council
Horizontal Meridian:	MGA Zone 56
Vertical Level Datum:	AHD D
Scale:	1:250@ A4
Designed:	Colliers
Drawn:	RCS 22/12/2023
Checked:	DE 10/1/2024
Plot Date:	10 Jan, 2024
Computer File Ref:	403109-S13H-DP-A.dwg

DISCLOSURE PLAN of Proposed Lot 1369 being part of Lot 910 on SP339534



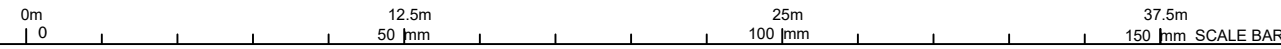
veris

BRISBANE (07) 3666 4700 WHITSUNDAYS (07) 4945 6600

MACKAY (07) 4957 9700 CAIRNS (07) 4252 9400

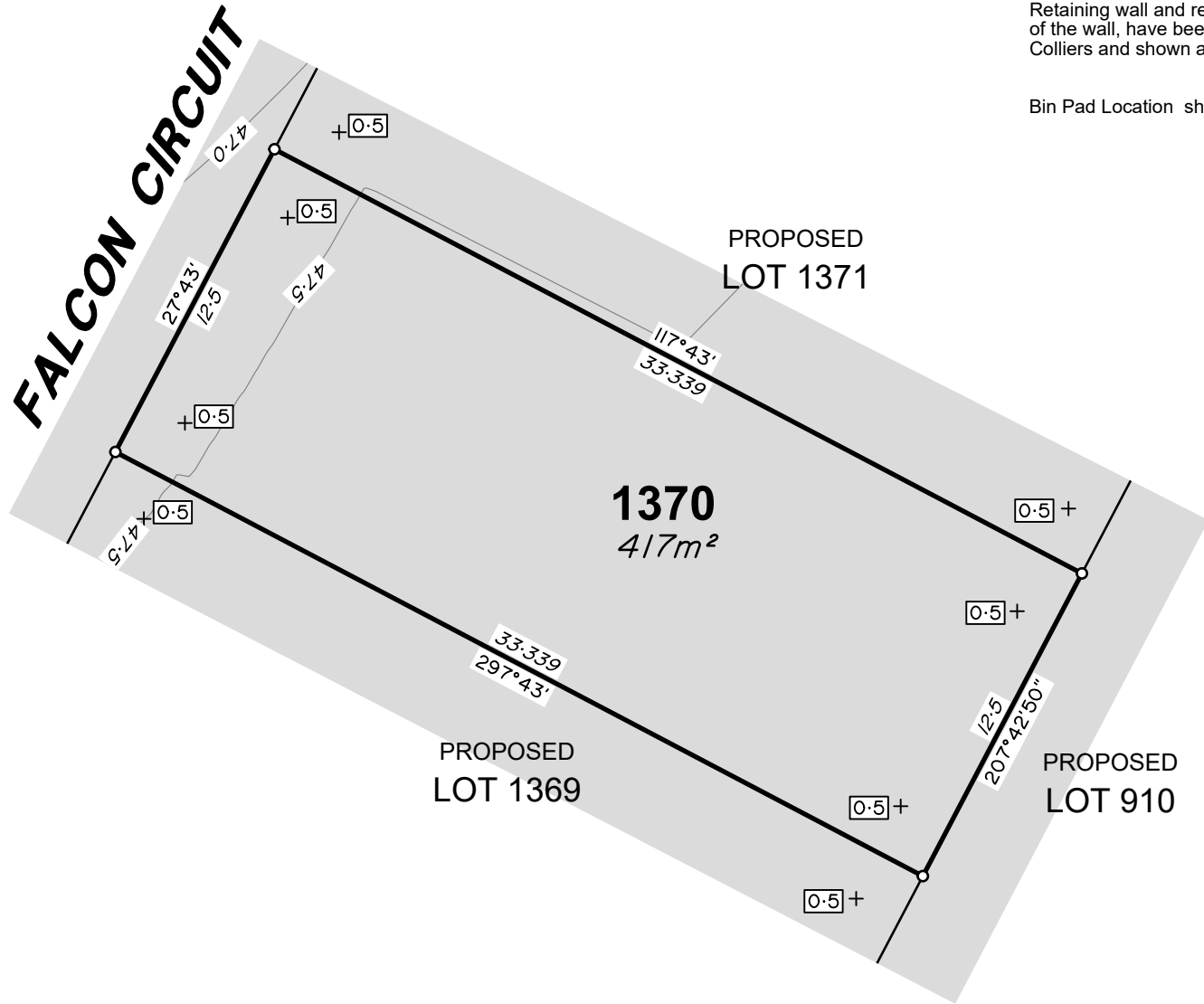
veris.com.au
ACN 615 735 727
Veris Australia Pty Ltd

Drawing No	Issue
430109-DP-1369	A





FALCON CIRCUIT



LEGEND

Final surface contours based on A.H.D. datum at an interval of 0.5m, shown as: — 15.5 —

Where applicable, areas to be filled are shown as:

Depth of fill, in metres, shown as: + 0.5

Retaining wall and retaining wall height, shown on the lower side of the wall, have been calculated from digital data supplied by Colliers and shown as: (1.2)

Bin Pad Location shown as: *

FLAGSTONE PRECINCT 1 STAGE 3H For PEET FLAGSTONE CITY PTY LTD

IMPORTANT NOTES:
(These notes are an integral part of this plan)
This plan has been prepared for PEET FLAGSTONE CITY PTY LTD for the purposes of a Disclosure Plan Under the Land Sales Act 1984 (as amended). It is not to be used by any other person or corporation or for any other purposes and is subject to the following limitations:

Please refer to the approved Development Application for conditions relating to the LOT and to approved Operational Works drawings for services location and possible easements.

THESE DESIGNS AND DRAWINGS ARE COPYRIGHT AND ARE NOT TO BE USED OR REPRODUCED WITHOUT THE WRITTEN PERMISSION OF VERIS

Data Sources
Cadastral Boundaries: 30109-LC-Master(DE) FS94 2014.dwg
Final Surface Contours: FLAGSTONE - STAGE FGH - DISCLOSURE INFO - 16 11 2023 - Design Tin.dwg
Depth of fill: FLAGSTONE - STAGE FGH - DISCLOSURE INFO - 16 11 2023 - Depth Contours.dwg
Engineering design: 23-0143_X_BASE_DESIGN_3H.dwg

Issue	Revisions	Date	Drawn
A	Original	22.12.23	RCS

Locality:
Local Authority: Logan City Council
Horizontal Meridian: MGA Zone 56
Vertical Level Datum: AHD D
Scale: 1:250@ A4
Designed: Colliers
Drawn: RCS 22/12/2023
Checked: DE 10/1/2024
Plot Date: 10 Jan, 2024
Computer File Ref: 403109-S13H-DP-A.dwg

DISCLOSURE PLAN of Proposed Lot 1370 being part of Lot 910 on SP339534



veris

BRISBANE (07) 3666 4700 WHITSUNDAYS (07) 4945 6600

MACKAY (07) 4957 9700 CAIRNS (07) 4252 9400

veris.com.au
ACN 615 735 727
Veris Australia Pty Ltd

Drawing No 430109-DP-1370 Issue A

ADDITIONAL NOTES:

The LOT dimensions and area shown hereon are subject to final field survey and also to the requirements of Council and any other authority which may have requirements under any relevant legislation.

Final surface contours shown hereon have been supplied by Colliers.

Location of retaining walls are as shown on Engineering design drawings. Their as-constructed location may differ from their design location. Retaining wall heights have been supplied by Colliers.

Compaction of any fill material placed on this site shall be completed to level one inspection and testing services in accordance with AS3798-2007.

Depth of fill values are calculated to the pre-development surface.

January 2024





FALCON CIRCUIT

PROPOSED LOT 1372

1371
340m²

PROPOSED LOT 1370

PROPOSED LOT 910

LEGEND

Final surface contours based on A.H.D. datum at an interval of 0.5m, shown as: 15.5

Where applicable, areas to be filled are shown as:

Depth of fill, in metres, shown as:- + 0.5

Retaining wall and retaining wall height, shown on the lower side of the wall, have been calculated from digital data supplied by Colliers and shown as: (1.2)

Bin Pad Location shown as:

ADDITIONAL NOTES:

The LOT dimensions and area shown hereon are subject to final field survey and also to the requirements of Council and any other authority which may have requirements under any relevant legislation.

Final surface contours shown hereon have been supplied by Colliers.

Location of retaining walls are as shown on Engineering design drawings. Their as-constructed location may differ from their design location. Retaining wall heights have been supplied by Colliers.

Compaction of any fill material placed on this site shall be completed to level one inspection and testing services in accordance with AS3798-2007.

Depth of fill values are calculated to the pre-development surface.

January 2024

FLAGSTONE PRECINCT 1 STAGE 3H For PEET FLAGSTONE CITY PTY LTD

IMPORTANT NOTES:
(These notes are an integral part of this plan)
This plan has been prepared for PEET FLAGSTONE CITY PTY LTD for the purposes of a Disclosure Plan Under the Land Sales Act 1984 (as amended).
It is not to be used by any other person or corporation or for any other purposes and is subject to the following limitations:

Please refer to the approved Development Application for conditions relating to the LOT and to approved Operational Works drawings for services location and possible easements.

THESE DESIGNS AND DRAWINGS ARE COPYRIGHT AND ARE NOT TO BE USED OR REPRODUCED WITHOUT THE WRITTEN PERMISSION OF VERIS

Data Sources
Cadastral Boundaries:
30109-LC-Master(DE) FS94 2014.dwg
Final Surface Contours:
FLAGSTONE - STAGE FGH - DISCLOSURE INFO - 16 11 2023 - Design Tin.dwg
Depth of fill:
FLAGSTONE - STAGE FGH - DISCLOSURE INFO - 16 11 2023 - Depth Contours.dwg
Engineering design:
23-0143_X_BASE_DESIGN_3H.dwg

Issue	Revisions	Date	Drawn
A	Original	22.12.23	RCS

Locality:
Local Authority: Logan City Council
Horizontal Meridian: MGA Zone 56
Vertical Level Datum: AHD D
Scale: 1:250@ A4
Designed: Colliers
Drawn: RCS 22/12/2023
Checked: DE 10/11/2024
Plot Date: 10 Jan, 2024
Computer File Ref: 403109-S13H-DP-A.dwg

DISCLOSURE PLAN
of Proposed Lot 1371
being part of
Lot 910 on SP339534



veris

BRISBANE WHITSUNDAYS
(07) 3666 4700 (07) 4945 6600

MACKAY CAIRNS
(07) 4957 9700 (07) 4252 9400

veris.com.au
ACN 615 735 727
Veris Australia Pty Ltd

Drawing No 430109-DP-1371 Issue A





FALCON CIRCUIT

LEGEND

Final surface contours based on A.H.D. datum at an interval of 0.5m, shown as: — 15.5 —

Where applicable, areas to be filled are shown as:

Depth of fill, in metres, shown as: + 0.5

Retaining wall and retaining wall height, shown on the lower side of the wall, have been calculated from digital data supplied by Colliers and shown as: (1.2)

Bin Pad Location shown as: *

PROPOSED LOT 1373

1372
417m²

PROPOSED LOT 1371

PROPOSED LOT 910

ADDITIONAL NOTES:

The LOT dimensions and area shown hereon are subject to final field survey and also to the requirements of Council and any other authority which may have requirements under any relevant legislation.

Final surface contours shown hereon have been supplied by Colliers.

Location of retaining walls are as shown on Engineering design drawings. Their as-constructed location may differ from their design location. Retaining wall heights have been supplied by Colliers.

Compaction of any fill material placed on this site shall be completed to level one inspection and testing services in accordance with AS3798-2007.

Depth of fill values are calculated to the pre-development surface.

January 2024

FLAGSTONE PRECINCT 1 STAGE 3H For PEET FLAGSTONE CITY PTY LTD

IMPORTANT NOTES:
(These notes are an integral part of this plan)
This plan has been prepared for PEET FLAGSTONE CITY PTY LTD for the purposes of a Disclosure Plan Under the Land Sales Act 1984 (as amended).
It is not to be used by any other person or corporation or for any other purposes and is subject to the following limitations:

Please refer to the approved Development Application for conditions relating to the LOT and to approved Operational Works drawings for services location and possible easements.

THESE DESIGNS AND DRAWINGS ARE COPYRIGHT AND ARE NOT TO BE USED OR REPRODUCED WITHOUT THE WRITTEN PERMISSION OF VERIS

Data Sources
Cadastral Boundaries:
30109-LC-Master(DE) FS94 2014.dwg
Final Surface Contours:
FLAGSTONE - STAGE FGH - DISCLOSURE INFO - 16 11 2023 - Design Tin.dwg
Depth of fill:
FLAGSTONE - STAGE FGH - DISCLOSURE INFO - 16 11 2023 - Depth Contours.dwg
Engineering design:
23-0143_X_BASE_DESIGN_3H.dwg

Issue	Revisions	Date	Drawn
A	Original	22.12.23	RCS

Locality:
Local Authority: Logan City Council
Horizontal Meridian: MGA Zone 56
Vertical Level Datum: AHD D
Scale: 1:250@ A4
Designed: Colliers
Drawn: RCS 22/12/2023
Checked: DE 10/11/2024
Plot Date: 10 Jan, 2024
Computer File Ref: 403109-S13H-DP-A.dwg

DISCLOSURE PLAN of Proposed Lot 1372 being part of Lot 910 on SP339534



veris

BRISBANE (07) 3666 4700 WHITSUNDAYS (07) 4945 6600

MACKAY (07) 4957 9700 CAIRNS (07) 4252 9400

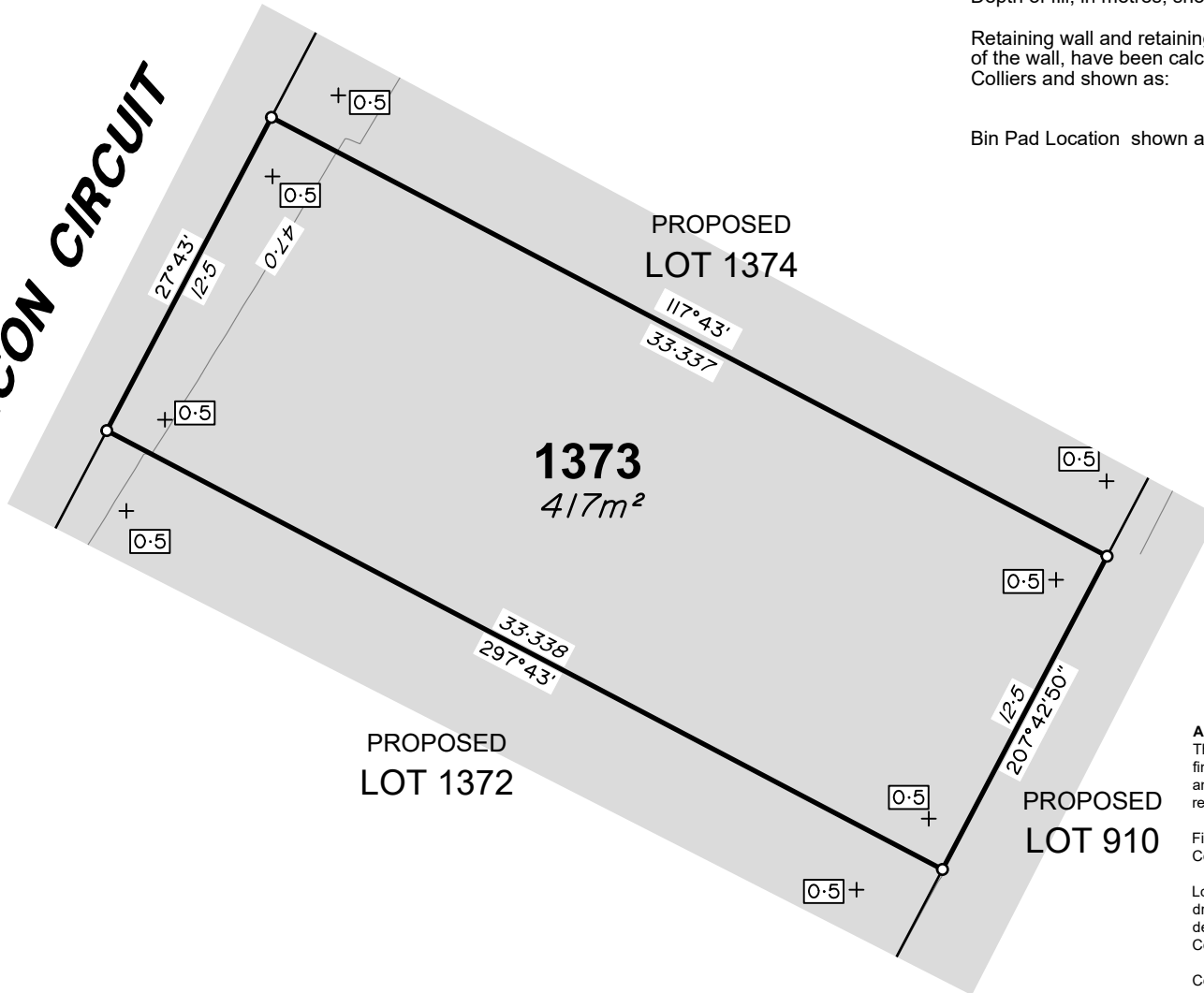
veris.com.au
ACN 615 735 727
Veris Australia Pty Ltd

Drawing No 430109-DP-1372 Issue A





FALCON CIRCUIT



LEGEND

Final surface contours based on A.H.D. datum at an interval of 0.5m, shown as: 15.5

Where applicable, areas to be filled are shown as:

Depth of fill, in metres, shown as: +

Retaining wall and retaining wall height, shown on the lower side of the wall, have been calculated from digital data supplied by Colliers and shown as: (1.2)

Bin Pad Location shown as:

ADDITIONAL NOTES:

The LOT dimensions and area shown hereon are subject to final field survey and also to the requirements of Council and any other authority which may have requirements under any relevant legislation.

Final surface contours shown hereon have been supplied by Colliers.

Location of retaining walls are as shown on Engineering design drawings. Their as-constructed location may differ from their design location. Retaining wall heights have been supplied by Colliers.

Compaction of any fill material placed on this site shall be completed to level one inspection and testing services in accordance with AS3798-2007.

Depth of fill values are calculated to the pre-development surface.

January 2024

FLAGSTONE PRECINCT 1 STAGE 3H For PEET FLAGSTONE CITY PTY LTD

IMPORTANT NOTES:
(These notes are an integral part of this plan)
This plan has been prepared for PEET FLAGSTONE CITY PTY LTD for the purposes of a Disclosure Plan Under the Land Sales Act 1984 (as amended).
It is not to be used by any other person or corporation or for any other purposes and is subject to the following limitations:

Please refer to the approved Development Application for conditions relating to the LOT and to approved Operational Works drawings for services location and possible easements.

THESE DESIGNS AND DRAWINGS ARE COPYRIGHT AND ARE NOT TO BE USED OR REPRODUCED WITHOUT THE WRITTEN PERMISSION OF VERIS

Data Sources			
Cadastral Boundaries:			
30109-LC-Master(DE) FS94 2014.dwg			
Final Surface Contours:			
FLAGSTONE - STAGE FGH - DISCLOSURE INFO - 16 11 2023 - Design Tin.dwg			
Depth of fill:			
FLAGSTONE - STAGE FGH - DISCLOSURE INFO - 16 11 2023 - Depth Contours.dwg			
Engineering design:			
23-0143_X_BASE_DESIGN_3H.dwg			

Issue	Revisions	Date	Drawn
A	Original	22.12.23	RCS

Locality:	
Local Authority:	Logan City Council
Horizontal Meridian:	MGA Zone 56
Vertical Level Datum:	AHD D
Scale:	1:250@ A4
Designed:	Colliers
Drawn:	RCS 22/12/2023
Checked:	DE 10/11/2024
Plot Date:	10 Jan, 2024
Computer File Ref:	403109-SI3H-DP-A.dwg

DISCLOSURE PLAN of Proposed Lot 1373 being part of Lot 910 on SP339534



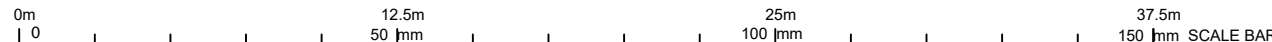
veris

BRISBANE WHITSUNDAYS
(07) 3666 4700 (07) 4945 6600

MACKAY CAIRNS
(07) 4957 9700 (07) 4252 9400

veris.com.au
ACN 615 735 727
Veris Australia Pty Ltd

Drawing No 430109-DP-1373 Issue A





FALCON CIRCUIT

LEGEND

Final surface contours based on A.H.D. datum at an interval of 0.5m, shown as: 15.5

Where applicable, areas to be filled are shown as:

Depth of fill, in metres, shown as: +

Retaining wall and retaining wall height, shown on the lower side of the wall, have been calculated from digital data supplied by Colliers and shown as: (1.2)

Bin Pad Location shown as:

PROPOSED LOT 1375

1374
417m²

PROPOSED LOT 1373

PROPOSED LOT 910

ADDITIONAL NOTES:

The LOT dimensions and area shown hereon are subject to final field survey and also to the requirements of Council and any other authority which may have requirements under any relevant legislation.

Final surface contours shown hereon have been supplied by Colliers.

Location of retaining walls are as shown on Engineering design drawings. Their as-constructed location may differ from their design location. Retaining wall heights have been supplied by Colliers.

Compaction of any fill material placed on this site shall be completed to level one inspection and testing services in accordance with AS3798-2007.

Depth of fill values are calculated to the pre-development surface.

January 2024

FLAGSTONE PRECINCT 1 STAGE 3H For PEET FLAGSTONE CITY PTY LTD

IMPORTANT NOTES:
(These notes are an integral part of this plan)
This plan has been prepared for PEET FLAGSTONE CITY PTY LTD for the purposes of a Disclosure Plan Under the Land Sales Act 1984 (as amended).
It is not to be used by any other person or corporation or for any other purposes and is subject to the following limitations:

Please refer to the approved Development Application for conditions relating to the LOT and to approved Operational Works drawings for services location and possible easements.

THESE DESIGNS AND DRAWINGS ARE COPYRIGHT AND ARE NOT TO BE USED OR REPRODUCED WITHOUT THE WRITTEN PERMISSION OF VERIS

Data Sources
Cadastral Boundaries:
30109-LC-Master(DE) FS94 2014.dwg
Final Surface Contours:
FLAGSTONE - STAGE FGH - DISCLOSURE INFO - 16 11 2023 - Design Tin.dwg
Depth of fill:
FLAGSTONE - STAGE FGH - DISCLOSURE INFO - 16 11 2023 - Depth Contours.dwg
Engineering design:
23-0143_X_BASE_DESIGN_3H.dwg

Issue	Revisions	Date	Drawn
A	Original	22-12-23	RCS

Locality:
Local Authority: Logan City Council
Horizontal Meridian: MGA Zone 56
Vertical Level Datum: AHD D
Scale: 1:250@ A4
Designed: Colliers
Drawn: RCS 22/12/2023
Checked: DE 10/11/2024
Plot Date: 10 Jan, 2024
Computer File Ref: 403109-S13H-DP-A.dwg

DISCLOSURE PLAN of Proposed Lot 1374 being part of Lot 910 on SP339534



veris

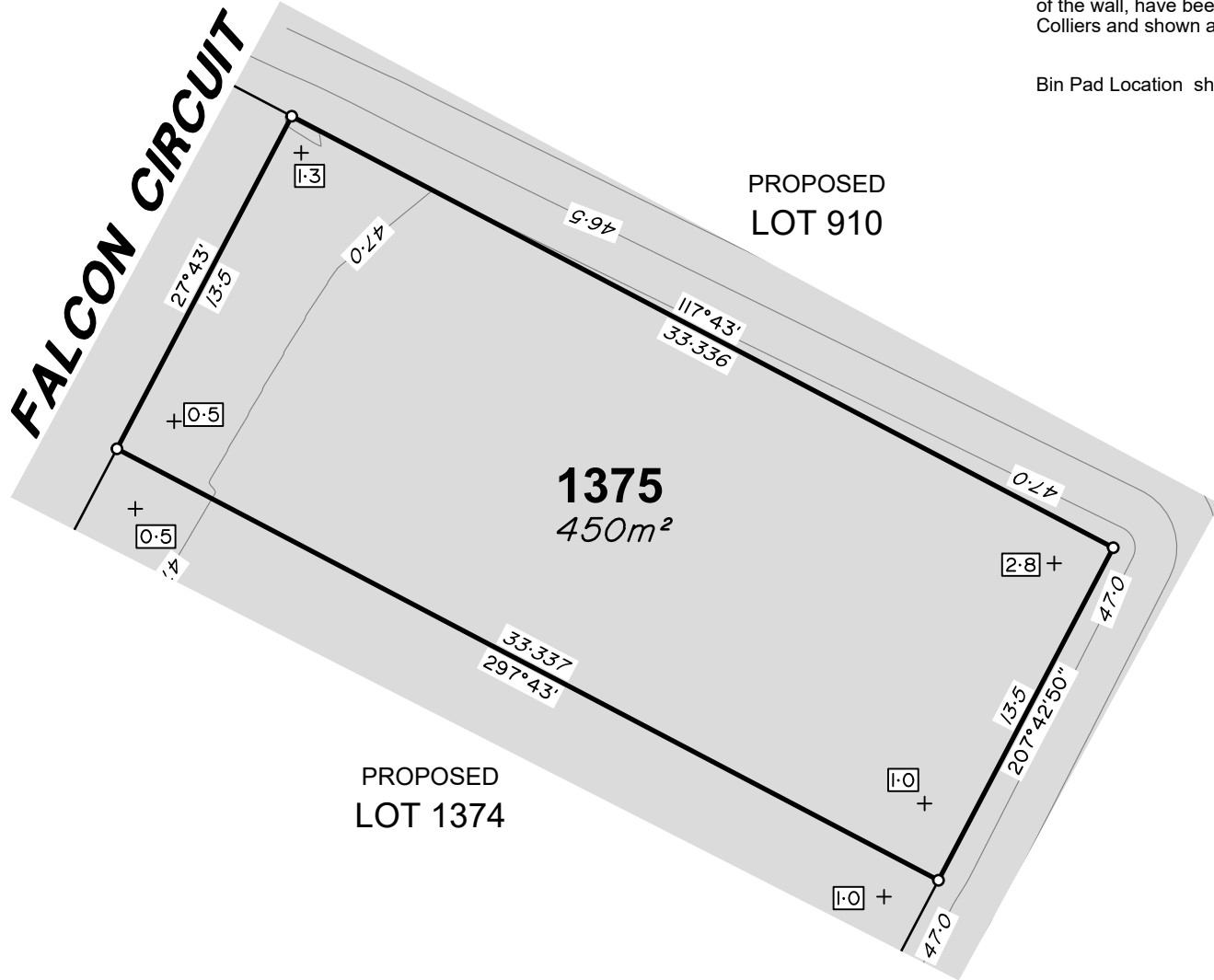
BRISBANE (07) 3666 4700 WHITSUNDAYS (07) 4945 6600

MACKAY (07) 4957 9700 CAIRNS (07) 4252 9400

veris.com.au
ACN 615 735 727
Veris Australia Pty Ltd

Drawing No 430109-DP-1374 Issue A





LEGEND

Final surface contours based on A.H.D. datum at an interval of 0.5m, shown as: 15.5

Where applicable, areas to be filled are shown as:

Depth of fill, in metres, shown as:- +

Retaining wall and retaining wall height, shown on the lower side of the wall, have been calculated from digital data supplied by Colliers and shown as: (1.2)

Bin Pad Location shown as:

ADDITIONAL NOTES:

The LOT dimensions and area shown hereon are subject to final field survey and also to the requirements of Council and any other authority which may have requirements under any relevant legislation.

Final surface contours shown hereon have been supplied by Colliers.

Location of retaining walls are as shown on Engineering design drawings. Their as-constructed location may differ from their design location. Retaining wall heights have been supplied by Colliers.

Compaction of any fill material placed on this site shall be completed to level one inspection and testing services in accordance with AS3798-2007.

Depth of fill values are calculated to the pre-development surface.

January 2024

FLAGSTONE PRECINCT 1 STAGE 3H For PEET FLAGSTONE CITY PTY LTD

IMPORTANT NOTES:
(These notes are an integral part of this plan)
This plan has been prepared for PEET FLAGSTONE CITY PTY LTD for the purposes of a Disclosure Plan Under the Land Sales Act 1984 (as amended).
It is not to be used by any other person or corporation or for any other purposes and is subject to the following limitations:

Please refer to the approved Development Application for conditions relating to the LOT and to approved Operational Works drawings for services location and possible easements.

THESE DESIGNS AND DRAWINGS ARE COPYRIGHT AND ARE NOT TO BE USED OR REPRODUCED WITHOUT THE WRITTEN PERMISSION OF VERIS

Data Sources
Cadastral Boundaries:
30109-LC-Master(DE) FS94 2014.dwg
Final Surface Contours:
FLAGSTONE - STAGE FGH - DISCLOSURE INFO - 16 11 2023 - Design Tin.dwg
Depth of fill:
FLAGSTONE - STAGE FGH - DISCLOSURE INFO - 16 11 2023 - Depth Contours.dwg
Engineering design:
23-0143_X_BASE_DESIGN_3H.dwg

Issue	Revisions	Date	Drawn
A	Original	22-12-23	RCS

Locality:
Local Authority: Logan City Council
Horizontal Meridian: MGA Zone 56
Vertical Level Datum: AHD D
Scale: 1:250@ A4
Designed: Colliers
Drawn: RCS 22/12/2023
Checked: DE 10/11/2024
Plot Date: 10 Jan, 2024
Computer File Ref: 403109-S13H-DP-A.dwg

DISCLOSURE PLAN of Proposed Lot 1375 being part of Lot 910 on SP339534



veris

BRISBANE (07) 3666 4700 WHITSUNDAYS (07) 4945 6600

MACKAY (07) 4957 9700 CAIRNS (07) 4252 9400

veris.com.au
ACN 615 735 727
Veris Australia Pty Ltd

Drawing No 430109-DP-1375 Issue A

