**ADDITIONAL NOTES:**

The LOT dimensions and area shown hereon are subject to final field survey and also to the requirements of Council and any other authority which may have requirements under any relevant legislation.

Final surface contours shown hereon have been supplied by Colliers.

Location of retaining walls are as shown on Engineering design drawings. Their as-constructed location may differ from their design location. Retaining wall heights have been supplied by Colliers.

Compaction of any fill material placed on this site shall be completed to level one inspection and testing services in accordance with AS3798-2007.

Depth of fill values are calculated to the pre-development surface.

December 2023

**FLAGSTONE
PRECINCT 1 STAGE 3Fii**
For
**PEET FLAGSTONE
CITY PTY LTD**

IMPORTANT NOTES:
(These notes are an integral part of this plan)
This plan has been prepared for PEET FLAGSTONE CITY PTY LTD for the purposes of a Disclosure Plan Under the Land Sales Act 1984 (as amended). It is not to be used by any other person or corporation or for any other purposes and is subject to the following limitations:

Please refer to the approved Development Application for conditions relating to the LOT and to approved Operational Works drawings for services location and possible easements.

THESE DESIGNS AND DRAWINGS ARE COPYRIGHT AND ARE NOT TO BE USED OR REPRODUCED WITHOUT THE WRITTEN PERMISSION OF VERIS

Data Sources
Cadastral Boundaries:
30109-LC-Master(DE) FS94 2014.dwg
Final Surface Contours:
FLAGSTONE - STAGE FGH - DISCLOSURE INFO - 16 11 2023 - Design Tin.dwg
Depth of fill:
FLAGSTONE - STAGE FGH - DISCLOSURE INFO - 16 11 2023 - Depth Contours.dwg
Engineering design:
23-0143_X_BASE_DESIGN_3F.dwg

Issue	Revisions	Date	Drawn
A	Original	22-12-23	RCS

Locality:
Local Authority: Logan City Council
Horizontal Meridian: MGA, Zone56
Vertical Level Datum: AHD D
Scale: 1:250@ A4
Designed: Colliers
Drawn: RCS 22/12/2023
Checked: DE 22/12/2023
Plot Date: 22 Dec, 2023
Computer File Ref: 403109-S13Fii-DP-A.dwg

**DISCLOSURE PLAN
of Proposed Lot 1353
being part of
Lot 910 on SP339534**



BRISBANE WHITSUNDAYS
(07) 3666 4700 (07) 4945 6600
MACKAY CAIRNS
(07) 4957 9700 (07) 4252 9400
veris.com.au
ACN 615 735 727
Veris Australia Pty Ltd

Drawing No 430109-DP-1353 Issue A

LEGEND

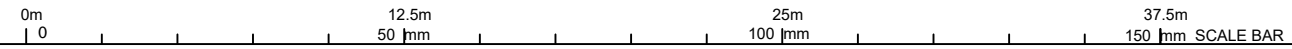
Final surface contours based on A.H.D. datum at an interval of 0.5m, shown as: 1/5.5

Where applicable, areas to be filled are shown as:

Depth of fill, in metres, shown as:- + 0.5

Retaining wall and retaining wall height, shown on the lower side of the wall, have been calculated from digital data supplied by Colliers and shown as: (1.2)

Bin Pad Location shown as:





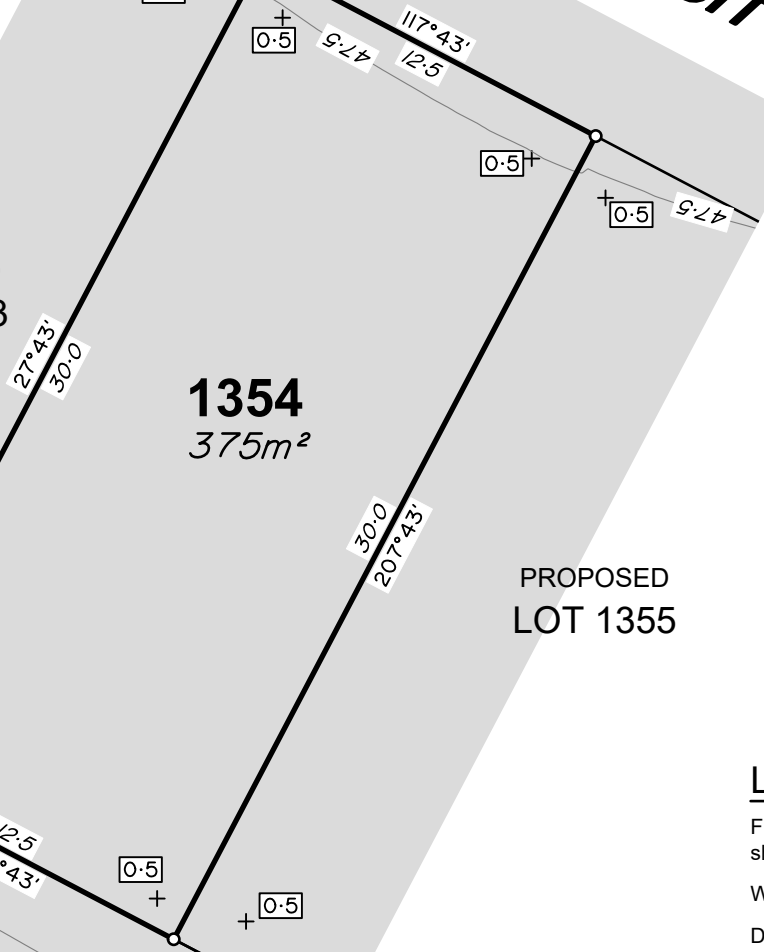
FALCON CIRCUIT

PROPOSED LOT 1353

1354
375m²

PROPOSED LOT 1355

50028
SP342150



ADDITIONAL NOTES:

The LOT dimensions and area shown hereon are subject to final field survey and also to the requirements of Council and any other authority which may have requirements under any relevant legislation.

Final surface contours shown hereon have been supplied by Colliers.

Location of retaining walls are as shown on Engineering design drawings. Their as-constructed location may differ from their design location. Retaining wall heights have been supplied by Colliers.

Compaction of any fill material placed on this site shall be completed to level one inspection and testing services in accordance with AS3798-2007.

Depth of fill values are calculated to the pre-development surface.

December 2023

FLAGSTONE PRECINCT 1 STAGE 3Fii

For
**PEET FLAGSTONE
CITY PTY LTD**

IMPORTANT NOTES:
(These notes are an integral part of this plan)
This plan has been prepared for PEET FLAGSTONE CITY PTY LTD for the purposes of a Disclosure Plan Under the Land Sales Act 1984 (as amended). It is not to be used by any other person or corporation or for any other purposes and is subject to the following limitations:

Please refer to the approved Development Application for conditions relating to the LOT and to approved Operational Works drawings for services location and possible easements.

THESE DESIGNS AND DRAWINGS ARE COPYRIGHT AND ARE NOT TO BE USED OR REPRODUCED WITHOUT THE WRITTEN PERMISSION OF VERIS

Data Sources
Cadastral Boundaries:
30109-LC-Master(DE) FS94 2014.dwg
Final Surface Contours:
FLAGSTONE - STAGE FGH - DISCLOSURE INFO - 16 11 2023 - Design Tin.dwg
Depth of fill:
FLAGSTONE - STAGE FGH - DISCLOSURE INFO - 16 11 2023 - Depth Contours.dwg
Engineering design:
23-0143_X_BASE_DESIGN_3F.dwg

Issue	Revisions	Date	Drawn
A	Original	22-12-23	RCS

Locality:
Local Authority: Logan City Council
Horizontal Meridian: MGA, Zone56
Vertical Level Datum: AHD D
Scale: 1:250@ A4
Designed: Colliers
Drawn: RCS 22/12/2023
Checked: DE 22/12/2023
Plot Date: 22 Dec, 2023
Computer File Ref: 403109-S13Fii-DP-A.dwg

DISCLOSURE PLAN of Proposed Lot 1354 being part of Lot 910 on SP339534



veris

BRISBANE (07) 3666 4700 WHITSUNDAYS (07) 4945 6600
MACKAY (07) 4957 9700 CAIRNS (07) 4252 9400

veris.com.au
ACN 615 735 727
Veris Australia Pty Ltd

Drawing No 430109-DP-1354 Issue A

LEGEND

Final surface contours based on A.H.D. datum at an interval of 0.5m, shown as: 1/5.5

Where applicable, areas to be filled are shown as:

Depth of fill, in metres, shown as: 0.5

Retaining wall and retaining wall height, shown on the lower side of the wall, have been calculated from digital data supplied by Colliers and shown as: (1.2)

Bin Pad Location shown as:





FALCON CIRCUIT

PROPOSED LOT 1354

1355
375m²

PROPOSED LOT 1356

0.5+
0.5+

0.5+

0.5+

0.5+

50028
SP342150

27°43'
30.0

30.0
207°43'

12.5
297°43'

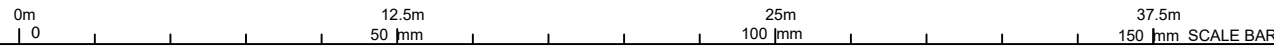
48.0

117°43'
51.27
12.5

0.84

0.5+

0.5+



ADDITIONAL NOTES:

The LOT dimensions and area shown hereon are subject to final field survey and also to the requirements of Council and any other authority which may have requirements under any relevant legislation.

Final surface contours shown hereon have been supplied by Colliers.

Location of retaining walls are as shown on Engineering design drawings. Their as-constructed location may differ from their design location. Retaining wall heights have been supplied by Colliers.

Compaction of any fill material placed on this site shall be completed to level one inspection and testing services in accordance with AS3798-2007.

Depth of fill values are calculated to the pre-development surface.

December 2023

FLAGSTONE PRECINCT 1 STAGE 3Fii For PEET FLAGSTONE CITY PTY LTD

IMPORTANT NOTES:
(These notes are an integral part of this plan)
This plan has been prepared for PEET FLAGSTONE CITY PTY LTD for the purposes of a Disclosure Plan Under the Land Sales Act 1984 (as amended). It is not to be used by any other person or corporation or for any other purposes and is subject to the following limitations:

Please refer to the approved Development Application for conditions relating to the LOT and to approved Operational Works drawings for services location and possible easements.

THESE DESIGNS AND DRAWINGS ARE COPYRIGHT AND ARE NOT TO BE USED OR REPRODUCED WITHOUT THE WRITTEN PERMISSION OF VERIS

Data Sources
Cadastral Boundaries:
30109-LC-Master(DE) FS94 2014.dwg
Final Surface Contours:
FLAGSTONE - STAGE FGH - DISCLOSURE INFO - 16 11 2023 - Design Tin.dwg
Depth of fill:
FLAGSTONE - STAGE FGH - DISCLOSURE INFO - 16 11 2023 - Depth Contours.dwg
Engineering design:
23-0143_X_BASE_DESIGN_3F.dwg

Issue	Revisions	Date	Drawn
A	Original	22-12-23	RCS

Locality:
Local Authority: Logan City Council
Horizontal Meridian: MGA, Zone56
Vertical Level Datum: AHD D
Scale: 1:250@ A4
Designed: Colliers
Drawn: RCS 22/12/2023
Checked: DE 22/12/2023
Plot Date: 22 Dec, 2023
Computer File Ref: 403109-S13Fii-DP-A.dwg

DISCLOSURE PLAN of Proposed Lot 1355 being part of Lot 910 on SP339534



veris

BRISBANE WHITSUNDAYS
(07) 3666 4700 (07) 4945 6600
MACKAY CAIRNS
(07) 4957 9700 (07) 4252 9400

veris.com.au
ACN 615 735 727
Veris Australia Pty Ltd

Drawing No 430109-DP-1355 Issue A

LEGEND

Final surface contours based on A.H.D. datum at an interval of 0.5m, shown as: 1/5.5

Where applicable, areas to be filled are shown as:

Depth of fill, in metres, shown as: 0.5

Retaining wall and retaining wall height, shown on the lower side of the wall, have been calculated from digital data supplied by Colliers and shown as: (1.2)

Bin Pad Location shown as:



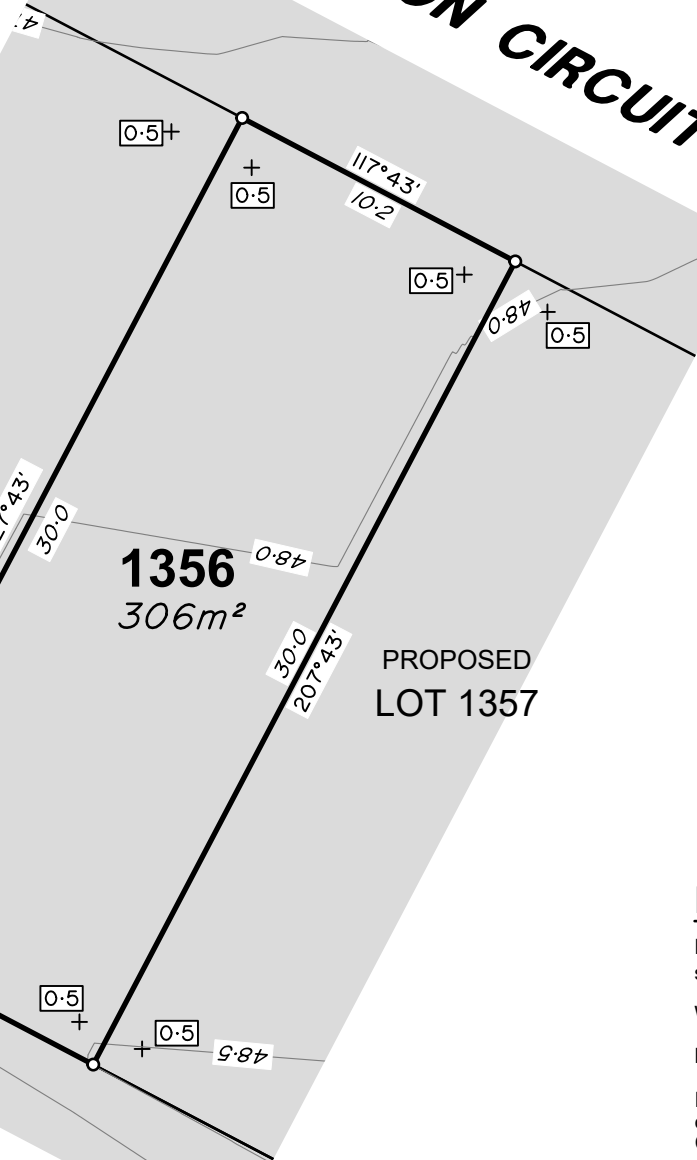
FALCON CIRCUIT

PROPOSED LOT 1355

1356
306m²

PROPOSED LOT 1357

50028
SP342150



ADDITIONAL NOTES:

The LOT dimensions and area shown hereon are subject to final field survey and also to the requirements of Council and any other authority which may have requirements under any relevant legislation.

Final surface contours shown hereon have been supplied by Colliers.

Location of retaining walls are as shown on Engineering design drawings. Their as-constructed location may differ from their design location. Retaining wall heights have been supplied by Colliers.

Compaction of any fill material placed on this site shall be completed to level one inspection and testing services in accordance with AS3798-2007.

Depth of fill values are calculated to the pre-development surface.

December 2023

FLAGSTONE PRECINCT 1 STAGE 3Fii For PEET FLAGSTONE CITY PTY LTD

IMPORTANT NOTES:
(These notes are an integral part of this plan)
This plan has been prepared for PEET FLAGSTONE CITY PTY LTD for the purposes of a Disclosure Plan Under the Land Sales Act 1984 (as amended). It is not to be used by any other person or corporation or for any other purposes and is subject to the following limitations:

Please refer to the approved Development Application for conditions relating to the LOT and to approved Operational Works drawings for services location and possible easements.

THESE DESIGNS AND DRAWINGS ARE COPYRIGHT AND ARE NOT TO BE USED OR REPRODUCED WITHOUT THE WRITTEN PERMISSION OF VERIS

Data Sources
Cadastral Boundaries:
30109-LC-Master(DE) FS94 2014.dwg
Final Surface Contours:
FLAGSTONE - STAGE FGH - DISCLOSURE INFO - 16 11 2023 - Design Tin.dwg
Depth of fill:
FLAGSTONE - STAGE FGH - DISCLOSURE INFO - 16 11 2023 - Depth Contours.dwg
Engineering design:
23-0143_X_BASE_DESIGN_3F.dwg

Issue	Revisions	Date	Drawn
A	Original	22-12-23	RCS

Locality:
Local Authority: Logan City Council
Horizontal Meridian: MGA, Zone56
Vertical Level Datum: AHD D
Scale: 1:250@ A4
Designed: Colliers
Drawn: RCS 22/12/2023
Checked: DE 22/12/2023
Plot Date: 22 Dec, 2023
Computer File Ref: 403109-S13Fii-DP-A.dwg

DISCLOSURE PLAN of Proposed Lot 1356 being part of Lot 910 on SP339534



veris

BRISBANE (07) 3666 4700 WHITSUNDAYS (07) 4945 6600
MACKAY (07) 4957 9700 CAIRNS (07) 4252 9400

veris.com.au
ACN 615 735 727
Veris Australia Pty Ltd

Drawing No 430109-DP-1356 Issue A

LEGEND

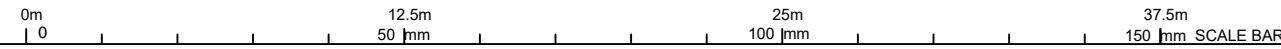
Final surface contours based on A.H.D. datum at an interval of 0.5m, shown as: 1/5

Where applicable, areas to be filled are shown as:

Depth of fill, in metres, shown as: 0.5

Retaining wall and retaining wall height, shown on the lower side of the wall, have been calculated from digital data supplied by Colliers and shown as: (1.2)

Bin Pad Location shown as:





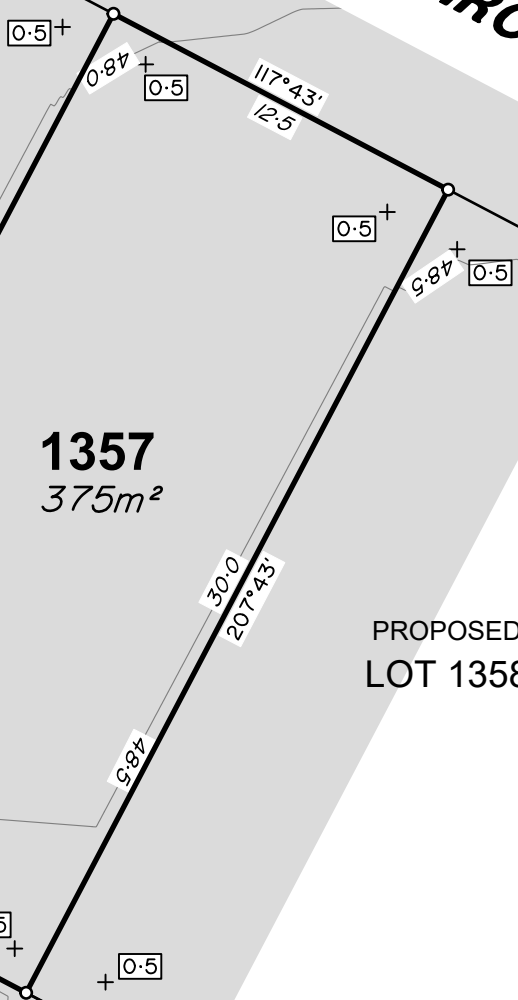
FALCON CIRCUIT

PROPOSED LOT 1356

1357
375m²

PROPOSED LOT 1358

50028
SP342150



ADDITIONAL NOTES:

The LOT dimensions and area shown hereon are subject to final field survey and also to the requirements of Council and any other authority which may have requirements under any relevant legislation.

Final surface contours shown hereon have been supplied by Colliers.

Location of retaining walls are as shown on Engineering design drawings. Their as-constructed location may differ from their design location. Retaining wall heights have been supplied by Colliers.

Compaction of any fill material placed on this site shall be completed to level one inspection and testing services in accordance with AS3798-2007.

Depth of fill values are calculated to the pre-development surface.

December 2023

FLAGSTONE PRECINCT 1 STAGE 3Fii For PEET FLAGSTONE CITY PTY LTD

IMPORTANT NOTES:
(These notes are an integral part of this plan)
This plan has been prepared for PEET FLAGSTONE CITY PTY LTD for the purposes of a Disclosure Plan Under the Land Sales Act 1984 (as amended). It is not to be used by any other person or corporation or for any other purposes and is subject to the following limitations:

Please refer to the approved Development Application for conditions relating to the LOT and to approved Operational Works drawings for services location and possible easements.

THESE DESIGNS AND DRAWINGS ARE COPYRIGHT AND ARE NOT TO BE USED OR REPRODUCED WITHOUT THE WRITTEN PERMISSION OF VERIS

Data Sources
Cadastral Boundaries:
30109-LC-Master(DE) FS94 2014.dwg
Final Surface Contours:
FLAGSTONE - STAGE FGH - DISCLOSURE INFO - 16 11 2023 - Design Tin.dwg
Depth of fill:
FLAGSTONE - STAGE FGH - DISCLOSURE INFO - 16 11 2023 - Depth Contours.dwg
Engineering design:
23-0143_X_BASE_DESIGN_3F.dwg

Issue	Revisions	Date	Drawn
A	Original	22-12-23	RCS

Locality:
Local Authority: Logan City Council
Horizontal Meridian: MGA, Zone56
Vertical Level Datum: AHD D
Scale: 1:250@ A4
Designed: Colliers
Drawn: RCS 22/12/2023
Checked: DE 22/12/2023
Plot Date: 22 Dec, 2023
Computer File Ref: 403109-S13Fii-DP-A.dwg

DISCLOSURE PLAN of Proposed Lot 1357 being part of Lot 910 on SP339534



veris

BRISBANE WHITSUNDAYS
(07) 3666 4700 (07) 4945 6600
MACKAY CAIRNS
(07) 4957 9700 (07) 4252 9400

veris.com.au
ACN 615 735 727
Veris Australia Pty Ltd

Drawing No 430109-DP-1357 Issue A

LEGEND

Final surface contours based on A.H.D. datum at an interval of 0.5m, shown as: 1/5.5

Where applicable, areas to be filled are shown as:

Depth of fill, in metres, shown as: 0.5

Retaining wall and retaining wall height, shown on the lower side of the wall, have been calculated from digital data supplied by Colliers and shown as: (1.2)

Bin Pad Location shown as:





FALCON CIRCUIT

PROPOSED LOT 1357

1358
375m²

PROPOSED LOT 1359

50028
SP342150

0m
12.5m
50 mm

25m
100 mm

37.5m
150 mm SCALE BAR

ADDITIONAL NOTES:

The LOT dimensions and area shown hereon are subject to final field survey and also to the requirements of Council and any other authority which may have requirements under any relevant legislation.

Final surface contours shown hereon have been supplied by Colliers.

Location of retaining walls are as shown on Engineering design drawings. Their as-constructed location may differ from their design location. Retaining wall heights have been supplied by Colliers.

Compaction of any fill material placed on this site shall be completed to level one inspection and testing services in accordance with AS3798-2007.

Depth of fill values are calculated to the pre-development surface.

December 2023

FLAGSTONE PRECINCT 1 STAGE 3Fii For PEET FLAGSTONE CITY PTY LTD

IMPORTANT NOTES:

(These notes are an integral part of this plan)

This plan has been prepared for PEET FLAGSTONE CITY PTY LTD for the purposes of a Disclosure Plan Under the Land Sales Act 1984 (as amended).

It is not to be used by any other person or corporation or for any other purposes and is subject to the following limitations:

Please refer to the approved Development Application for conditions relating to the LOT and to approved Operational Works drawings for services location and possible easements.

THESE DESIGNS AND DRAWINGS ARE COPYRIGHT AND ARE NOT TO BE USED OR REPRODUCED WITHOUT THE WRITTEN PERMISSION OF VERIS

Data Sources
Cadastral Boundaries:
30109-LC-Master(DE) FS94 2014.dwg
Final Surface Contours:
FLAGSTONE - STAGE FGH - DISCLOSURE INFO - 16 11 2023 - Design Tin.dwg
Depth of fill:
FLAGSTONE - STAGE FGH - DISCLOSURE INFO - 16 11 2023 - Depth Contours.dwg
Engineering design:
23-0143_X_BASE_DESIGN_3F.dwg

Issue	Revisions	Date	Drawn
A	Original	22-12-23	RCS

Locality:
Local Authority: Logan City Council
Horizontal Meridian: MGA, Zone56
Vertical Level Datum: AHD D
Scale: 1:250@ A4
Designed: Colliers
Drawn: RCS 22/12/2023
Checked: DE 22/12/2023
Plot Date: 22 Dec, 2023
Computer File Ref: 403109-S13Fii-DP-A.dwg

DISCLOSURE PLAN of Proposed Lot 1358 being part of Lot 910 on SP339534



veris

BRISBANE (07) 3666 4700 WHITSUNDAYS (07) 4945 6600

MACKAY (07) 4957 9700 CAIRNS (07) 4252 9400

veris.com.au

ACN 615 735 727
Veris Australia Pty Ltd

Drawing No 430109-DP-1358 Issue A

LEGEND

Final surface contours based on A.H.D. datum at an interval of 0.5m, shown as: 1/5.5

Where applicable, areas to be filled are shown as:

Depth of fill, in metres, shown as: 0.5

Retaining wall and retaining wall height, shown on the lower side of the wall, have been calculated from digital data supplied by Colliers and shown as: (1.2)

Bin Pad Location shown as:



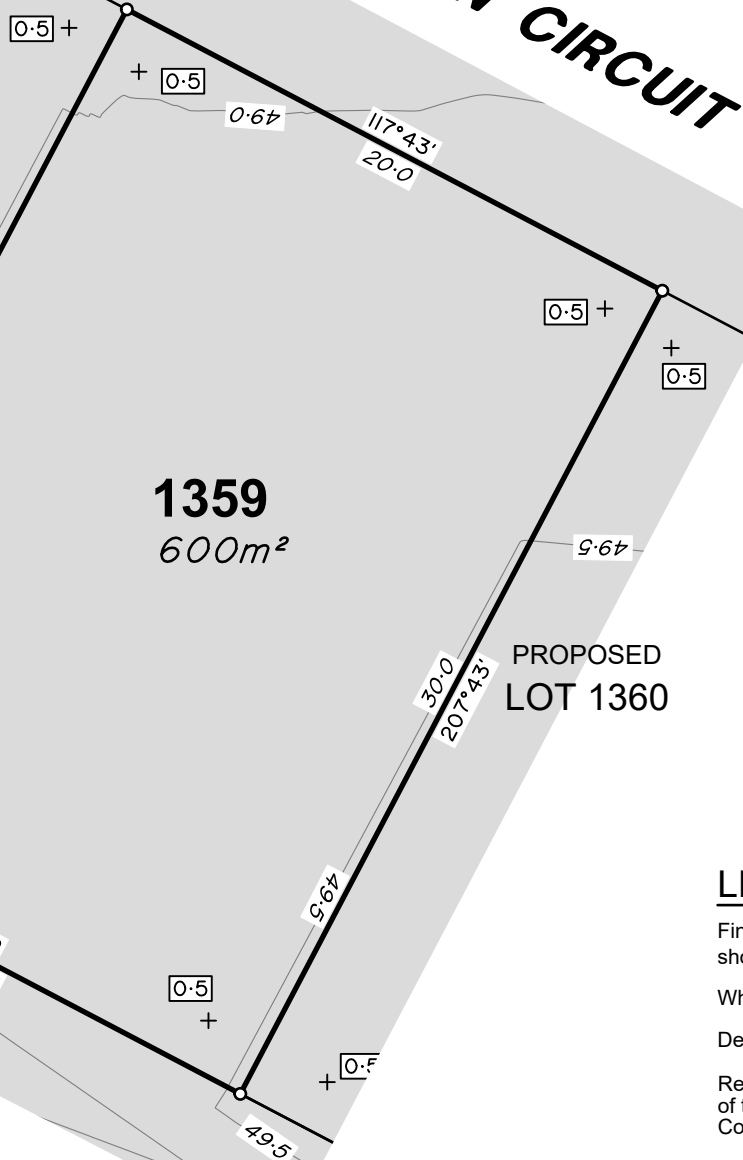
FALCON CIRCUIT

PROPOSED LOT 1358

1359
600m²

PROPOSED LOT 1360

50028
SP342150



ADDITIONAL NOTES:

The LOT dimensions and area shown hereon are subject to final field survey and also to the requirements of Council and any other authority which may have requirements under any relevant legislation.

Final surface contours shown hereon have been supplied by Colliers.

Location of retaining walls are as shown on Engineering design drawings. Their as-constructed location may differ from their design location. Retaining wall heights have been supplied by Colliers.

Compaction of any fill material placed on this site shall be completed to level one inspection and testing services in accordance with AS3798-2007.

Depth of fill values are calculated to the pre-development surface.

December 2023

FLAGSTONE PRECINCT 1 STAGE 3Fii For PEET FLAGSTONE CITY PTY LTD

IMPORTANT NOTES:

(These notes are an integral part of this plan)
This plan has been prepared for PEET FLAGSTONE CITY PTY LTD for the purposes of a Disclosure Plan Under the Land Sales Act 1984 (as amended). It is not to be used by any other person or corporation or for any other purposes and is subject to the following limitations:

Please refer to the approved Development Application for conditions relating to the LOT and to approved Operational Works drawings for services location and possible easements.

THESE DESIGNS AND DRAWINGS ARE COPYRIGHT AND ARE NOT TO BE USED OR REPRODUCED WITHOUT THE WRITTEN PERMISSION OF VERIS

Data Sources
 Cadastral Boundaries:
 30109-LC-Master(DE) FS94 2014.dwg
 Final Surface Contours:
 FLAGSTONE - STAGE FGH - DISCLOSURE INFO - 16 11 2023 - Design Tin.dwg
 Depth of fill:
 FLAGSTONE - STAGE FGH - DISCLOSURE INFO - 16 11 2023 - Depth Contours.dwg
 Engineering design:
 23-0143_X_BASE_DESIGN_3F.dwg

Issue	Revisions	Date	Drawn
A	Original	22-12-23	RCS

Locality:
 Local Authority: Logan City Council
 Horizontal Meridian: MGA, Zone56
 Vertical Level Datum: AHD D
 Scale: 1:250@ A4
 Designed: Colliers
 Drawn: RCS 22/12/2023
 Checked: DE 22/12/2023
 Plot Date: 22 Dec, 2023
 Computer File Ref: 403109-S13Fii-DP-A.dwg

DISCLOSURE PLAN of Proposed Lot 1359 being part of Lot 910 on SP339534



veris

BRISBANE WHITSUNDAYS
 (07) 3666 4700 (07) 4945 6600
 MACKAY CAIRNS
 (07) 4957 9700 (07) 4252 9400

veris.com.au
 ACN 615 735 727
 Veris Australia Pty Ltd

Drawing No 430109-DP-1359 Issue A

LEGEND

Final surface contours based on A.H.D. datum at an interval of 0.5m, shown as: 1/5.5

Where applicable, areas to be filled are shown as:

Depth of fill, in metres, shown as: 0.5

Retaining wall and retaining wall height, shown on the lower side of the wall, have been calculated from digital data supplied by Colliers and shown as: (1.2)

Bin Pad Location shown as:



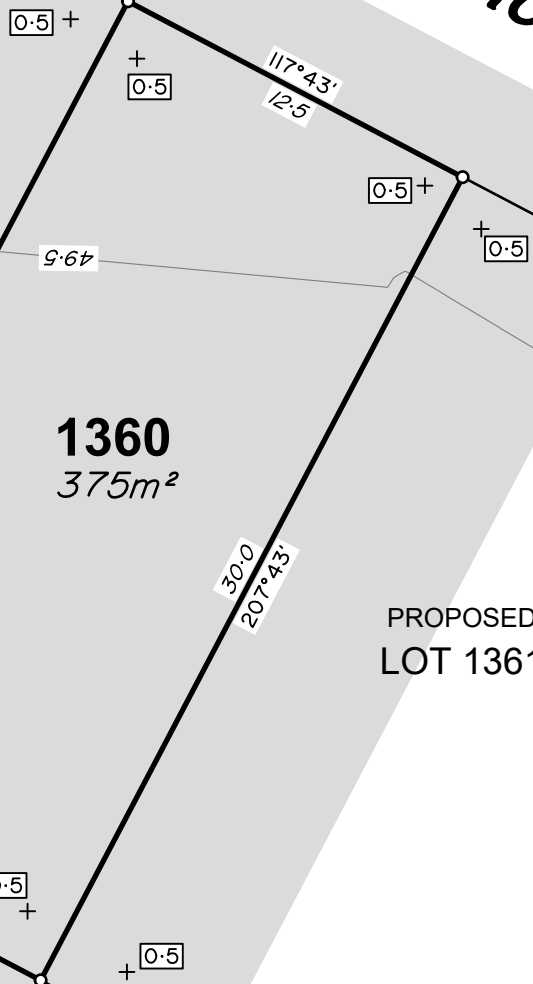
FALCON CIRCUIT

PROPOSED LOT 1359

1360
375m²

PROPOSED LOT 1361

50028
SP342150



ADDITIONAL NOTES:

The LOT dimensions and area shown hereon are subject to final field survey and also to the requirements of Council and any other authority which may have requirements under any relevant legislation.

Final surface contours shown hereon have been supplied by Colliers.

Location of retaining walls are as shown on Engineering design drawings. Their as-constructed location may differ from their design location. Retaining wall heights have been supplied by Colliers.

Compaction of any fill material placed on this site shall be completed to level one inspection and testing services in accordance with AS3798-2007.

Depth of fill values are calculated to the pre-development surface.

December 2023

FLAGSTONE PRECINCT 1 STAGE 3Fii For PEET FLAGSTONE CITY PTY LTD

IMPORTANT NOTES:
(These notes are an integral part of this plan)
This plan has been prepared for PEET FLAGSTONE CITY PTY LTD for the purposes of a Disclosure Plan Under the Land Sales Act 1984 (as amended). It is not to be used by any other person or corporation or for any other purposes and is subject to the following limitations:

Please refer to the approved Development Application for conditions relating to the LOT and to approved Operational Works drawings for services location and possible easements.

THESE DESIGNS AND DRAWINGS ARE COPYRIGHT AND ARE NOT TO BE USED OR REPRODUCED WITHOUT THE WRITTEN PERMISSION OF VERIS

Data Sources
Cadastral Boundaries:
30109-LC-Master(DE) FS94 2014.dwg
Final Surface Contours:
FLAGSTONE - STAGE FGH - DISCLOSURE INFO - 16 11 2023 - Design Tin.dwg
Depth of fill:
FLAGSTONE - STAGE FGH - DISCLOSURE INFO - 16 11 2023 - Depth Contours.dwg
Engineering design:
23-0143_X_BASE_DESIGN_3F.dwg

Issue	Revisions	Date	Drawn
A	Original	22-12-23	RCS

Locality:
Local Authority: Logan City Council
Horizontal Meridian: MGA, Zone56
Vertical Level Datum: AHD D
Scale: 1:250@ A4
Designed: Colliers
Drawn: RCS 22/12/2023
Checked: DE 22/12/2023
Plot Date: 22 Dec, 2023
Computer File Ref: 403109-S13Fii-DP-A.dwg

DISCLOSURE PLAN of Proposed Lot 1360 being part of Lot 910 on SP339534



veris

BRISBANE WHITSUNDAYS
(07) 3666 4700 (07) 4945 6600

MACKAY CAIRNS
(07) 4957 9700 (07) 4252 9400

veris.com.au
ACN 615 735 727
Veris Australia Pty Ltd

Drawing No 430109-DP-1360 Issue A

LEGEND

Final surface contours based on A.H.D. datum at an interval of 0.5m, shown as: 1/5.5

Where applicable, areas to be filled are shown as:

Depth of fill, in metres, shown as: 0.5

Retaining wall and retaining wall height, shown on the lower side of the wall, have been calculated from digital data supplied by Colliers and shown as: (1.2)

Bin Pad Location shown as:

0m 12.5m 25m 37.5m
0 50 100 150 mm SCALE BAR



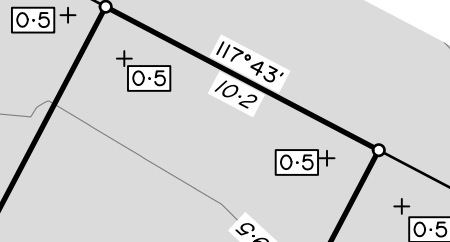
FALCON CIRCUIT

PROPOSED LOT 1360

1361
306m²

PROPOSED LOT 1362

50028
SP342150



LEGEND

Final surface contours based on A.H.D. datum at an interval of 0.5m, shown as: 1/5

Where applicable, areas to be filled are shown as:

Depth of fill, in metres, shown as: $+ \boxed{0.5}$

Retaining wall and retaining wall height, shown on the lower side of the wall, have been calculated from digital data supplied by Colliers and shown as: (1.2)

Bin Pad Location shown as:

ADDITIONAL NOTES:

The LOT dimensions and area shown hereon are subject to final field survey and also to the requirements of Council and any other authority which may have requirements under any relevant legislation.

Final surface contours shown hereon have been supplied by Colliers.

Location of retaining walls are as shown on Engineering design drawings. Their as-constructed location may differ from their design location. Retaining wall heights have been supplied by Colliers.

Compaction of any fill material placed on this site shall be completed to level one inspection and testing services in accordance with AS3798-2007.

Depth of fill values are calculated to the pre-development surface.

December 2023

FLAGSTONE PRECINCT 1 STAGE 3Fii For PEET FLAGSTONE CITY PTY LTD

IMPORTANT NOTES:
(These notes are an integral part of this plan)
This plan has been prepared for PEET FLAGSTONE CITY PTY LTD for the purposes of a Disclosure Plan Under the Land Sales Act 1984 (as amended). It is not to be used by any other person or corporation for any other purposes and is subject to the following limitations:

Please refer to the approved Development Application for conditions relating to the LOT and to approved Operational Works drawings for services location and possible easements.

THESE DESIGNS AND DRAWINGS ARE COPYRIGHT AND ARE NOT TO BE USED OR REPRODUCED WITHOUT THE WRITTEN PERMISSION OF VERIS

Data Sources
Cadastral Boundaries:
30109-LC-Master(DE) FS94 2014.dwg
Final Surface Contours:
FLAGSTONE - STAGE FGH - DISCLOSURE INFO - 16 11 2023 - Design Tin.dwg
Depth of fill:
FLAGSTONE - STAGE FGH - DISCLOSURE INFO - 16 11 2023 - Depth Contours.dwg
Engineering design:
23-0143_X_BASE_DESIGN_3F.dwg

Issue	Revisions	Date	Drawn
A	Original	22-12-23	RCS

Locality:
Local Authority: Logan City Council
Horizontal Meridian: MGA, Zone56
Vertical Level Datum: AHD D
Scale: 1:250@ A4
Designed: Colliers
Drawn: RCS 22/12/2023
Checked: DE 22/12/2023
Plot Date: 22 Dec, 2023
Computer File Ref: 403109-S13Fii-DP-A.dwg

DISCLOSURE PLAN of Proposed Lot 1361 being part of Lot 910 on SP339534



veris

BRISBANE (07) 3666 4700 WHITSUNDAYS (07) 4945 6600

MACKAY (07) 4957 9700 CAIRNS (07) 4252 9400

veris.com.au

ACN 615 735 727
Veris Australia Pty Ltd

Drawing No 430109-DP-1361 Issue A





FALCON CIRCUIT

PROPOSED LOT 1361

1362
375m²

PROPOSED LOT 1363

50028
SP342150



ADDITIONAL NOTES:

The LOT dimensions and area shown hereon are subject to final field survey and also to the requirements of Council and any other authority which may have requirements under any relevant legislation.

Final surface contours shown hereon have been supplied by Colliers.

Location of retaining walls are as shown on Engineering design drawings. Their as-constructed location may differ from their design location. Retaining wall heights have been supplied by Colliers.

Compaction of any fill material placed on this site shall be completed to level one inspection and testing services in accordance with AS3798-2007.

Depth of fill values are calculated to the pre-development surface.

December 2023

FLAGSTONE PRECINCT 1 STAGE 3Fii For PEET FLAGSTONE CITY PTY LTD

IMPORTANT NOTES:
(These notes are an integral part of this plan)

This plan has been prepared for PEET FLAGSTONE CITY PTY LTD for the purposes of a Disclosure Plan Under the Land Sales Act 1984 (as amended).

It is not to be used by any other person or corporation or for any other purposes and is subject to the following limitations:

Please refer to the approved Development Application for conditions relating to the LOT and to approved Operational Works drawings for services location and possible easements.

THESE DESIGNS AND DRAWINGS ARE COPYRIGHT AND ARE NOT TO BE USED OR REPRODUCED WITHOUT THE WRITTEN PERMISSION OF VERIS

Data Sources

Cadastral Boundaries:
30109-LC-Master(DE) FS94 2014.dwg
Final Surface Contours:
FLAGSTONE - STAGE FGH - DISCLOSURE INFO - 16 11 2023 - Design Tin.dwg
Depth of fill:
FLAGSTONE - STAGE FGH - DISCLOSURE INFO - 16 11 2023 - Depth Contours.dwg
Engineering design:
23-0143_X_BASE_DESIGN_3F.dwg

Issue	Revisions	Date	Drawn
A	Original	22-12-23	RCS

Locality:
Local Authority: Logan City Council
Horizontal Meridian: MGA, Zone56
Vertical Level Datum: AHD D
Scale: 1:250@ A4
Designed: Colliers
Drawn: RCS 22/12/2023
Checked: DE 22/12/2023
Plot Date: 22 Dec, 2023
Computer File Ref: 403109-S13Fii-DP-A.dwg

DISCLOSURE PLAN of Proposed Lot 1362 being part of Lot 910 on SP339534



veris

BRISBANE (07) 3666 4700 WHITSUNDAYS (07) 4945 6600

MACKAY (07) 4957 9700 CAIRNS (07) 4252 9400

veris.com.au

ACN 615 735 727
Veris Australia Pty Ltd

Drawing No 430109-DP-1362 Issue A

LEGEND

Final surface contours based on A.H.D. datum at an interval of 0.5m, shown as: 1/5.5

Where applicable, areas to be filled are shown as:

Depth of fill, in metres, shown as: 0.5

Retaining wall and retaining wall height, shown on the lower side of the wall, have been calculated from digital data supplied by Colliers and shown as: (1.2)

Bin Pad Location shown as:



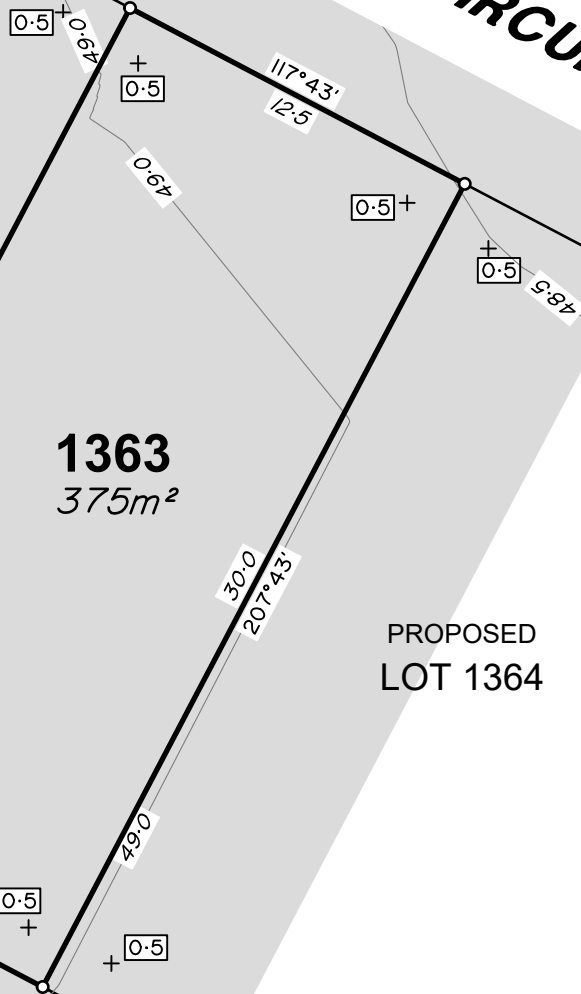
FALCON CIRCUIT

PROPOSED LOT 1362

1363
375m²

PROPOSED LOT 1364

50028
SP342150



LEGEND

Final surface contours based on A.H.D. datum at an interval of 0.5m, shown as: 1/5

Where applicable, areas to be filled are shown as:

Depth of fill, in metres, shown as: 0.5

Retaining wall and retaining wall height, shown on the lower side of the wall, have been calculated from digital data supplied by Colliers and shown as: (1.2)

Bin Pad Location shown as:

ADDITIONAL NOTES:

The LOT dimensions and area shown hereon are subject to final field survey and also to the requirements of Council and any other authority which may have requirements under any relevant legislation.

Final surface contours shown hereon have been supplied by Colliers.

Location of retaining walls are as shown on Engineering design drawings. Their as-constructed location may differ from their design location. Retaining wall heights have been supplied by Colliers.

Compaction of any fill material placed on this site shall be completed to level one inspection and testing services in accordance with AS3798-2007.

Depth of fill values are calculated to the pre-development surface.

December 2023

FLAGSTONE PRECINCT 1 STAGE 3Fii For PEET FLAGSTONE CITY PTY LTD

IMPORTANT NOTES:
(These notes are an integral part of this plan)
This plan has been prepared for PEET FLAGSTONE CITY PTY LTD for the purposes of a Disclosure Plan Under the Land Sales Act 1984 (as amended). It is not to be used by any other person or corporation or for any other purposes and is subject to the following limitations:

Please refer to the approved Development Application for conditions relating to the LOT and to approved Operational Works drawings for services location and possible easements.

THESE DESIGNS AND DRAWINGS ARE COPYRIGHT AND ARE NOT TO BE USED OR REPRODUCED WITHOUT THE WRITTEN PERMISSION OF VERIS

Data Sources
Cadastral Boundaries:
30109-LC-Master(DE) FS94 2014.dwg
Final Surface Contours:
FLAGSTONE - STAGE FGH - DISCLOSURE INFO - 16 11 2023 - Design Tin.dwg
Depth of fill:
FLAGSTONE - STAGE FGH - DISCLOSURE INFO - 16 11 2023 - Depth Contours.dwg
Engineering design:
23-0143_X_BASE_DESIGN_3F.dwg

Issue	Revisions	Date	Drawn
A	Original	22-12-23	RCS

Locality:
Local Authority: Logan City Council
Horizontal Meridian: MGA, Zone56
Vertical Level Datum: AHD D
Scale: 1:250@ A4
Designed: Colliers
Drawn: RCS 22/12/2023
Checked: DE 22/12/2023
Plot Date: 22 Dec, 2023
Computer File Ref: 403109-S13Fii-DP-A.dwg

DISCLOSURE PLAN of Proposed Lot 1363 being part of Lot 910 on SP339534



veris

BRISBANE (07) 3666 4700 WHITSUNDAYS (07) 4945 6600

MACKAY (07) 4957 9700 CAIRNS (07) 4252 9400

veris.com.au

ACN 615 735 727
Veris Australia Pty Ltd

Drawing No 430109-DP-1363 Issue A





FALCON CIRCUIT

PROPOSED LOT 1363

1364
420m²

PROPOSED LOT 1365

50028
SP342150

0.5 +

0.5 +

0.5 +

0.5 +

0.5 +

0.5 +

0.5 +

0.5 +

14.0

297°43'

48.5

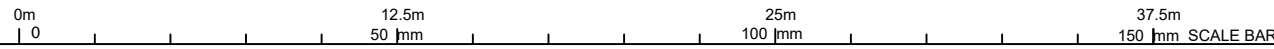
117°43'
14.0

48.5

30.0
207°43'

27°43'
30.0

49.0



ADDITIONAL NOTES:

The LOT dimensions and area shown hereon are subject to final field survey and also to the requirements of Council and any other authority which may have requirements under any relevant legislation.

Final surface contours shown hereon have been supplied by Colliers.

Location of retaining walls are as shown on Engineering design drawings. Their as-constructed location may differ from their design location. Retaining wall heights have been supplied by Colliers.

Compaction of any fill material placed on this site shall be completed to level one inspection and testing services in accordance with AS3798-2007.

Depth of fill values are calculated to the pre-development surface.

December 2023

FLAGSTONE PRECINCT 1 STAGE 3Fii For PEET FLAGSTONE CITY PTY LTD

IMPORTANT NOTES:
(These notes are an integral part of this plan)
This plan has been prepared for PEET FLAGSTONE CITY PTY LTD for the purposes of a Disclosure Plan Under the Land Sales Act 1984 (as amended). It is not to be used by any other person or corporation or for any other purposes and is subject to the following limitations:

Please refer to the approved Development Application for conditions relating to the LOT and to approved Operational Works drawings for services location and possible easements.

THESE DESIGNS AND DRAWINGS ARE COPYRIGHT AND ARE NOT TO BE USED OR REPRODUCED WITHOUT THE WRITTEN PERMISSION OF VERIS

Data Sources

Cadastral Boundaries:
30109-LC-Master(DE) FS94 2014.dwg
Final Surface Contours:
FLAGSTONE - STAGE FGH - DISCLOSURE INFO - 16 11 2023 - Design Tin.dwg
Depth of fill:
FLAGSTONE - STAGE FGH - DISCLOSURE INFO - 16 11 2023 - Depth Contours.dwg
Engineering design:
23-0143_X_BASE_DESIGN_3F.dwg

Issue	Revisions	Date	Drawn
A	Original	22-12-23	RCS

Locality:
Local Authority: Logan City Council
Horizontal Meridian: MGA, Zone56
Vertical Level Datum: AHD D
Scale: 1:250@ A4
Designed: Colliers
Drawn: RCS 22/12/2023
Checked: DE 22/12/2023
Plot Date: 22 Dec, 2023
Computer File Ref: 403109-S13Fii-DP-A.dwg

DISCLOSURE PLAN of Proposed Lot 1364 being part of Lot 910 on SP339534



veris

BRISBANE (07) 3666 4700 WHITSUNDAYS (07) 4945 6600

MACKAY (07) 4957 9700 CAIRNS (07) 4252 9400

veris.com.au

ACN 615 735 727
Veris Australia Pty Ltd

Drawing No 430109-DP-1364 Issue A

LEGEND

Final surface contours based on A.H.D. datum at an interval of 0.5m, shown as: 1/5.5

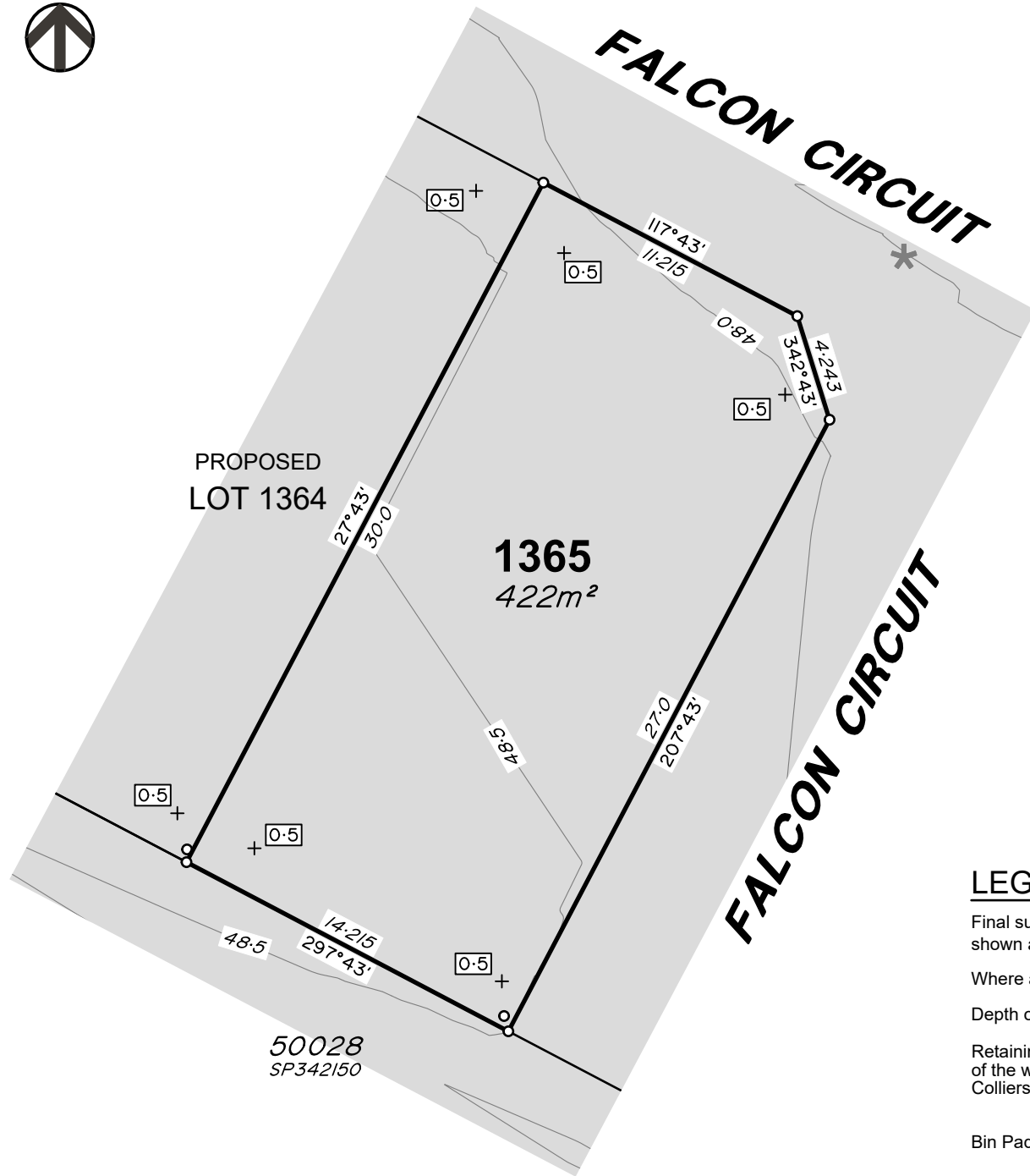
Where applicable, areas to be filled are shown as:

Depth of fill, in metres, shown as: - +

Retaining wall and retaining wall height, shown on the lower side of the wall, have been calculated from digital data supplied by Colliers and shown as:

(1.2)

Bin Pad Location shown as:



ADDITIONAL NOTES:

The LOT dimensions and area shown hereon are subject to final field survey and also to the requirements of Council and any other authority which may have requirements under any relevant legislation.

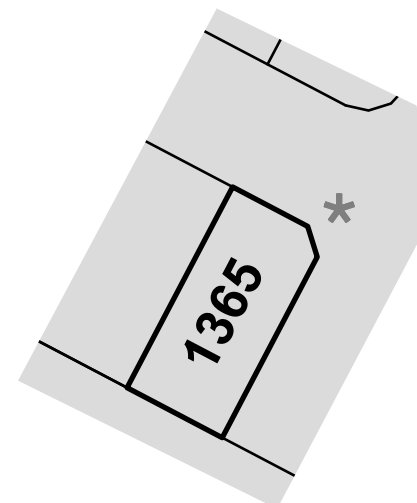
Final surface contours shown hereon have been supplied by Colliers.

Location of retaining walls are as shown on Engineering design drawings. Their as-constructed location may differ from their design location. Retaining wall heights have been supplied by Colliers.

Compaction of any fill material placed on this site shall be completed to level one inspection and testing services in accordance with AS3798-2007.

Depth of fill values are calculated to the pre-development surface.

December 2023



BIN LOCATION

LEGEND

Final surface contours based on A.H.D. datum at an interval of 0.5m, shown as: 1/5

Where applicable, areas to be filled are shown as:

Depth of fill, in metres, shown as: 0.5

Retaining wall and retaining wall height, shown on the lower side of the wall, have been calculated from digital data supplied by Colliers and shown as: (1.2)

Bin Pad Location shown as:



**FLAGSTONE
PRECINCT 1 STAGE 3Fii**
For
**PEET FLAGSTONE
CITY PTY LTD**

IMPORTANT NOTES:
(These notes are an integral part of this plan)

This plan has been prepared for PEET FLAGSTONE CITY PTY LTD for the purposes of a Disclosure Plan Under the Land Sales Act 1984 (as amended).

It is not to be used by any other person or corporation or for any other purposes and is subject to the following limitations:

Please refer to the approved Development Application for conditions relating to the LOT and to approved Operational Works drawings for services location and possible easements.

THESE DESIGNS AND DRAWINGS ARE COPYRIGHT AND ARE NOT TO BE USED OR REPRODUCED WITHOUT THE WRITTEN PERMISSION OF VERIS

Data Sources

Cadastral Boundaries:
30109-LC-Master(DE) FS94 2014.dwg
Final Surface Contours:
FLAGSTONE - STAGE FGH - DISCLOSURE INFO - 16 11 2023 - Design Tin.dwg
Depth of fill:
FLAGSTONE - STAGE FGH - DISCLOSURE INFO - 16 11 2023 - Depth Contours.dwg
Engineering design:
23-0143_X_BASE_DESIGN_3F.dwg

Issue	Revisions	Date	Drawn
A	Original	22-12-23	RCS

Locality:
Local Authority: Logan City Council
Horizontal Meridian: MGA, Zone56
Vertical Level Datum: AHD D
Scale: 1:250@ A4
Designed: Colliers
Drawn: RCS 22/12/2023
Checked: DE 22/12/2023
Plot Date: 22 Dec, 2023
Computer File Ref: 403109-S13Fii-DP-A.dwg

**DISCLOSURE PLAN
of Proposed Lot 1365
being part of
Lot 910 on SP339534**



veris

BRISBANE WHITSUNDAYS
(07) 3666 4700 (07) 4945 6600
MACKAY CAIRNS
(07) 4957 9700 (07) 4252 9400

veris.com.au
ACN 615 735 727
Veris Australia Pty Ltd

Drawing No 430109-DP-1365 Issue A



PROPOSED LOT 1408

PROPOSED LOT 1409

PROPOSED LOT 1377

1376
52lm²

FALCON CIRCUIT

Retaining Wall Lot 1409
Min Height:- 1.0m
Max Height:- 1.2m
Average Height:- 1.1m

Retaining Wall Lot 1376
Min Height:- 0.8m
Max Height:- 1.2m
Average Height:- 1.0m

ADDITIONAL NOTES:

The LOT dimensions and area shown hereon are subject to final field survey and also to the requirements of Council and any other authority which may have requirements under any relevant legislation.

Final surface contours shown hereon have been supplied by Colliers.

Location of retaining walls are as shown on Engineering design drawings. Their as-constructed location may differ from their design location. Retaining wall heights have been supplied by Colliers.

Compaction of any fill material placed on this site shall be completed to level one inspection and testing services in accordance with AS3798-2007.

Depth of fill values are calculated to the pre-development surface.

December 2023

**FLAGSTONE
PRECINCT 1 STAGE 3Fii**

For
**PEET FLAGSTONE
CITY PTY LTD**

IMPORTANT NOTES:
(These notes are an integral part of this plan)

This plan has been prepared for PEET FLAGSTONE CITY PTY LTD for the purposes of a Disclosure Plan Under the Land Sales Act 1984 (as amended).

It is not to be used by any other person or corporation or for any other purposes and is subject to the following limitations:

Please refer to the approved Development Application for conditions relating to the LOT and to approved Operational Works drawings for services location and possible easements.

THESE DESIGNS AND DRAWINGS ARE COPYRIGHT AND ARE NOT TO BE USED OR REPRODUCED WITHOUT THE WRITTEN PERMISSION OF VERIS

Data Sources
Cadastral Boundaries:
30109-LC-Master(DE) FS94 2014.dwg
Final Surface Contours:
FLAGSTONE - STAGE FGH - DISCLOSURE INFO - 16 11 2023 - Design Tin.dwg
Depth of fill:
FLAGSTONE - STAGE FGH - DISCLOSURE INFO - 16 11 2023 - Depth Contours.dwg
Engineering design:
23-0143_X_BASE_DESIGN_3F.dwg

Issue	Revisions	Date	Drawn
A	Original	22-12-23	RCS

Locality:
Local Authority: Logan City Council
Horizontal Meridian: MGA, Zone56
Vertical Level Datum: AHD D
Scale: 1:250@ A4
Designed: Colliers
Drawn: RCS 22/12/2023
Checked: DE 22/12/2023
Plot Date: 22 Dec, 2023
Computer File Ref: 403109-S13Fii-DP-A.dwg

**DISCLOSURE PLAN
of Proposed Lot 1376
being part of
Lot 910 on SP339534**



veris

BRISBANE (07) 3666 4700 WHITSUNDAYS (07) 4945 6600

MACKAY (07) 4957 9700 CAIRNS (07) 4252 9400

veris.com.au
ACN 615 735 727
Veris Australia Pty Ltd

Drawing No 430109-DP-1376 Issue A

LEGEND

Final surface contours based on A.H.D. datum at an interval of 0.5m, shown as: — 1/5.5 —

Where applicable, areas to be filled are shown as:

Depth of fill, in metres, shown as:- + 0.5

Retaining wall and retaining wall height, shown on the lower side of the wall, have been calculated from digital data supplied by Colliers and shown as:

Bin Pad Location shown as: *





PROPOSED LOT 1407

Retaining Wall Lot 1408
Min Height:- 1.5m
Max Height:- 1.6m
Average Height:- 1.55m

PROPOSED LOT 1408

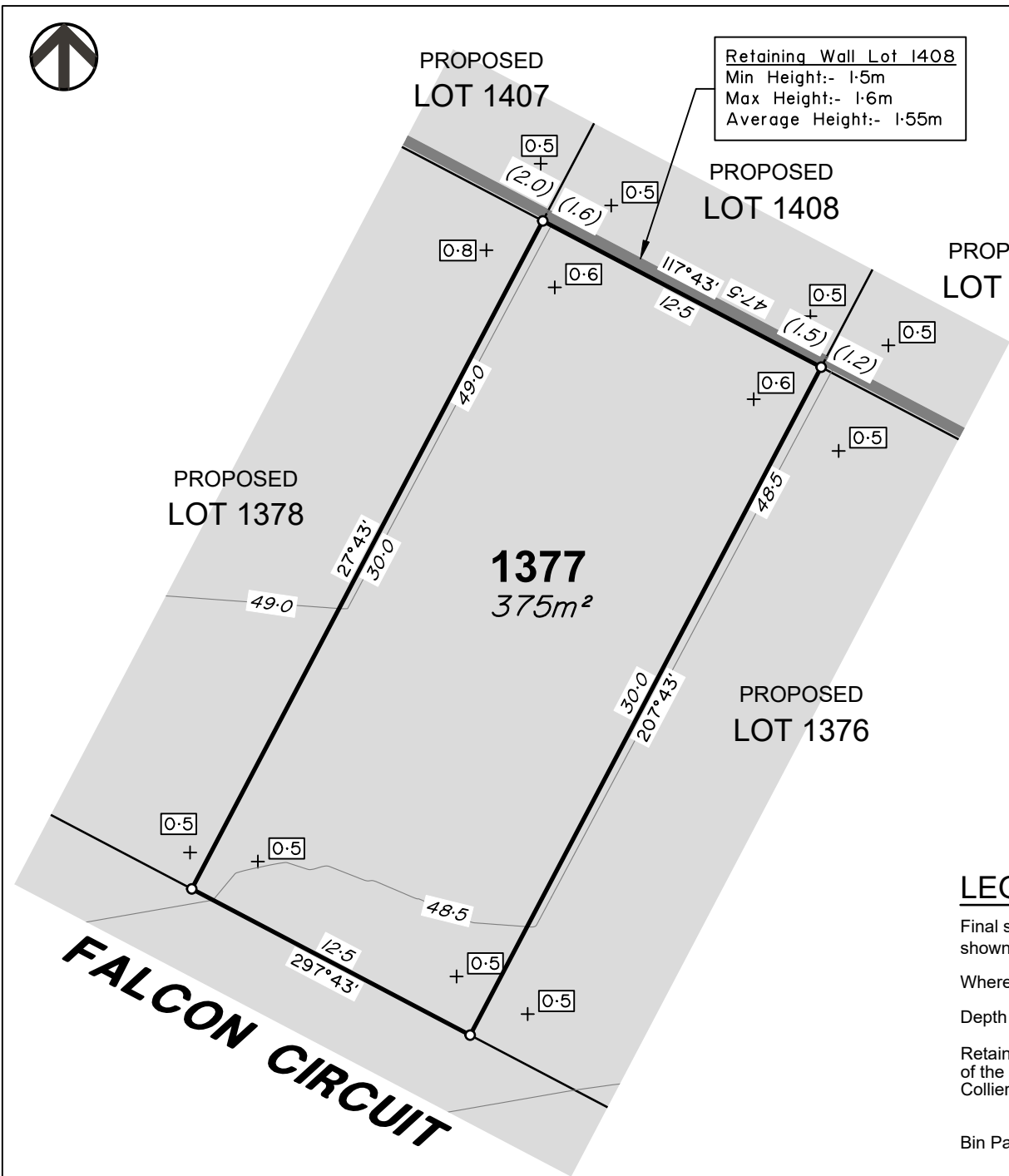
PROPOSED LOT 1409

PROPOSED LOT 1378

1377
375m²

PROPOSED LOT 1376

FALCON CIRCUIT



ADDITIONAL NOTES:

The LOT dimensions and area shown hereon are subject to final field survey and also to the requirements of Council and any other authority which may have requirements under any relevant legislation.

Final surface contours shown hereon have been supplied by Colliers.

Location of retaining walls are as shown on Engineering design drawings. Their as-constructed location may differ from their design location. Retaining wall heights have been supplied by Colliers.

Compaction of any fill material placed on this site shall be completed to level one inspection and testing services in accordance with AS3798-2007.

Depth of fill values are calculated to the pre-development surface.

December 2023

**FLAGSTONE
PRECINCT 1 STAGE 3Fii**
For
**PEET FLAGSTONE
CITY PTY LTD**

IMPORTANT NOTES:
(These notes are an integral part of this plan)
This plan has been prepared for PEET FLAGSTONE CITY PTY LTD for the purposes of a Disclosure Plan Under the Land Sales Act 1984 (as amended). It is not to be used by any other person or corporation or for any other purposes and is subject to the following limitations:

Please refer to the approved Development Application for conditions relating to the LOT and to approved Operational Works drawings for services location and possible easements.

THESE DESIGNS AND DRAWINGS ARE COPYRIGHT AND ARE NOT TO BE USED OR REPRODUCED WITHOUT THE WRITTEN PERMISSION OF VERIS

Data Sources
Cadastral Boundaries:
30109-LC-Master(DE) FS94 2014.dwg
Final Surface Contours:
FLAGSTONE - STAGE FGH - DISCLOSURE INFO - 16 11 2023 - Design Tin.dwg
Depth of fill:
FLAGSTONE - STAGE FGH - DISCLOSURE INFO - 16 11 2023 - Depth Contours.dwg
Engineering design:
23-0143_X_BASE_DESIGN_3F.dwg

Issue	Revisions	Date	Drawn
A	Original	22-12-23	RCS

Locality:
Local Authority: Logan City Council
Horizontal Meridian: MGA, Zone56
Vertical Level Datum: AHD D
Scale: 1:250@ A4
Designed: Colliers
Drawn: RCS 22/12/2023
Checked: DE 22/12/2023
Plot Date: 22 Dec, 2023
Computer File Ref: 403109-S13Fii-DP-A.dwg

**DISCLOSURE PLAN
of Proposed Lot 1377
being part of
Lot 910 on SP339534**



veris

BRISBANE (07) 3666 4700 WHITSUNDAYS (07) 4945 6600

MACKAY (07) 4957 9700 CAIRNS (07) 4252 9400

veris.com.au
ACN 615 735 727
Veris Australia Pty Ltd

Drawing No 430109-DP-1377 Issue A

LEGEND

Final surface contours based on A.H.D. datum at an interval of 0.5m, shown as: — 1/5.5 —

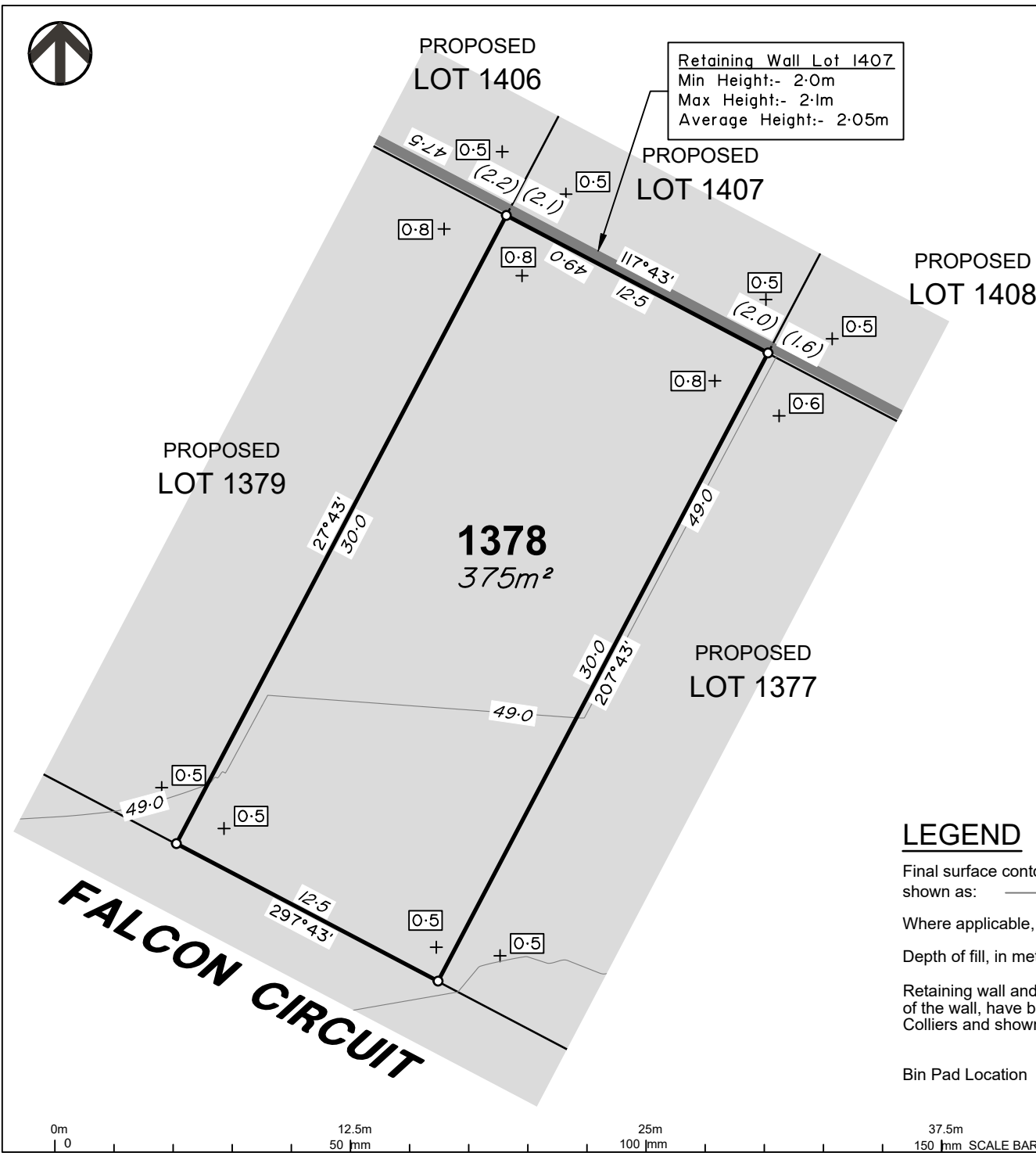
Where applicable, areas to be filled are shown as:

Depth of fill, in metres, shown as:- + 0.5

Retaining wall and retaining wall height, shown on the lower side of the wall, have been calculated from digital data supplied by Colliers and shown as:

Bin Pad Location shown as: *





Retaining Wall Lot 1407
 Min Height:- 2.0m
 Max Height:- 2.1m
 Average Height:- 2.05m

ADDITIONAL NOTES:

The LOT dimensions and area shown hereon are subject to final field survey and also to the requirements of Council and any other authority which may have requirements under any relevant legislation.

Final surface contours shown hereon have been supplied by Colliers.

Location of retaining walls are as shown on Engineering design drawings. Their as-constructed location may differ from their design location. Retaining wall heights have been supplied by Colliers.

Compaction of any fill material placed on this site shall be completed to level one inspection and testing services in accordance with AS3798-2007.

Depth of fill values are calculated to the pre-development surface.

December 2023

**FLAGSTONE
 PRECINCT 1 STAGE 3Fii**
 For
**PEET FLAGSTONE
 CITY PTY LTD**

IMPORTANT NOTES:
 (These notes are an integral part of this plan)
 This plan has been prepared for PEET FLAGSTONE CITY PTY LTD for the purposes of a Disclosure Plan Under the Land Sales Act 1984 (as amended). It is not to be used by any other person or corporation or for any other purposes and is subject to the following limitations:

Please refer to the approved Development Application for conditions relating to the LOT and to approved Operational Works drawings for services location and possible easements.

THESE DESIGNS AND DRAWINGS ARE COPYRIGHT AND ARE NOT TO BE USED OR REPRODUCED WITHOUT THE WRITTEN PERMISSION OF VERIS

Data Sources
 Cadastral Boundaries:
 30109-LC-Master(DE) FS94 2014.dwg
 Final Surface Contours:
 FLAGSTONE - STAGE FGH - DISCLOSURE INFO - 16 11 2023 - Design Tin.dwg
 Depth of fill:
 FLAGSTONE - STAGE FGH - DISCLOSURE INFO - 16 11 2023 - Depth Contours.dwg
 Engineering design:
 23-0143_X_BASE_DESIGN_3F.dwg

Issue	Revisions	Date	Drawn
A	Original	22-12-23	RCS

Locality:
 Local Authority: Logan City Council
 Horizontal Meridian: MGA, Zone56
 Vertical Level Datum: AHD D
 Scale: 1:250@ A4
 Designed: Colliers
 Drawn: RCS 22/12/2023
 Checked: DE 22/12/2023
 Plot Date: 22 Dec, 2023
 Computer File Ref: 403109-S13Fii-DP-A.dwg

**DISCLOSURE PLAN
 of Proposed Lot 1378
 being part of
 Lot 910 on SP339534**



veris

BRISBANE WHITSUNDAYS
 (07) 3666 4700 (07) 4945 6600
 MACKAY CAIRNS
 (07) 4957 9700 (07) 4252 9400
 veris.com.au
 ACN 615 735 727
 Veris Australia Pty Ltd

Drawing No 430109-DP-1378 Issue A

LEGEND

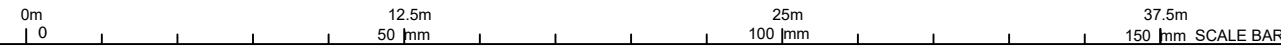
Final surface contours based on A.H.D. datum at an interval of 0.5m, shown as: 1/5.5

Where applicable, areas to be filled are shown as:

Depth of fill, in metres, shown as:- +

Retaining wall and retaining wall height, shown on the lower side of the wall, have been calculated from digital data supplied by Colliers and shown as: (1.2)

Bin Pad Location shown as:





PROPOSED LOT 1405

Retaining Wall Lot 1406
Min Height:- 2.2m
Max Height:- 2.3m
Average Height:- 2.25m

PROPOSED LOT 1406

PROPOSED LOT 1407

PROPOSED LOT 1380

1379
375m²

PROPOSED LOT 1378

FALCON CIRCUIT

ADDITIONAL NOTES:

The LOT dimensions and area shown hereon are subject to final field survey and also to the requirements of Council and any other authority which may have requirements under any relevant legislation.

Final surface contours shown hereon have been supplied by Colliers.

Location of retaining walls are as shown on Engineering design drawings. Their as-constructed location may differ from their design location. Retaining wall heights have been supplied by Colliers.

Compaction of any fill material placed on this site shall be completed to level one inspection and testing services in accordance with AS3798-2007.

Depth of fill values are calculated to the pre-development surface.

December 2023

FLAGSTONE
PRECINCT 1 STAGE 3Fii

For
PEET FLAGSTONE
CITY PTY LTD

IMPORTANT NOTES:
(These notes are an integral part of this plan)
This plan has been prepared for PEET FLAGSTONE CITY PTY LTD for the purposes of a Disclosure Plan Under the Land Sales Act 1984 (as amended). It is not to be used by any other person or corporation or for any other purposes and is subject to the following limitations:

Please refer to the approved Development Application for conditions relating to the LOT and to approved Operational Works drawings for services location and possible easements.

THESE DESIGNS AND DRAWINGS ARE COPYRIGHT AND ARE NOT TO BE USED OR REPRODUCED WITHOUT THE WRITTEN PERMISSION OF VERIS

Data Sources
Cadastral Boundaries:
30109-LC-Master(DE) FS94 2014.dwg
Final Surface Contours:
FLAGSTONE - STAGE FGH - DISCLOSURE INFO - 16 11 2023 - Design Tin.dwg
Depth of fill:
FLAGSTONE - STAGE FGH - DISCLOSURE INFO - 16 11 2023 - Depth Contours.dwg
Engineering design:
23-0143_X_BASE_DESIGN_3F.dwg

Issue	Revisions	Date	Drawn
A	Original	22-12-23	RCS

Locality:
Local Authority: Logan City Council
Horizontal Meridian: MGA, Zone56
Vertical Level Datum: AHD D
Scale: 1:250@ A4
Designed: Colliers
Drawn: RCS 22/12/2023
Checked: DE 22/12/2023
Plot Date: 22 Dec, 2023
Computer File Ref: 403109-S13Fii-DP-A.dwg

DISCLOSURE PLAN
of Proposed Lot 1379
being part of
Lot 910 on SP339534



veris

BRISBANE WHITSUNDAYS
(07) 3666 4700 (07) 4945 6600

MACKAY CAIRNS
(07) 4957 9700 (07) 4252 9400

veris.com.au
ACN 615 735 727
Veris Australia Pty Ltd

Drawing No
430109-DP-1379
Issue
A

LEGEND

Final surface contours based on A.H.D. datum at an interval of 0.5m, shown as: — 1/5.5 —

Where applicable, areas to be filled are shown as:

Depth of fill, in metres, shown as:- + 0.5

Retaining wall and retaining wall height, shown on the lower side of the wall, have been calculated from digital data supplied by Colliers and shown as:

Bin Pad Location shown as: * (1.2)





Retaining Wall Lot 1380
 Min Height:- 0.3m
 Max Height:- 0.7m
 Average Height:- 0.5m

Retaining Wall Lot 1405
 Min Height:- 1.9m
 Max Height:- 1.9m
 Average Height:- 1.9m

FALCON CIRCUIT

FALCON CIRCUIT

1380
 480m²

PROPOSED
LOT 1405

PROPOSED
LOT 1406

PROPOSED
LOT 1379



ADDITIONAL NOTES:

The LOT dimensions and area shown hereon are subject to final field survey and also to the requirements of Council and any other authority which may have requirements under any relevant legislation.

Final surface contours shown hereon have been supplied by Colliers.

Location of retaining walls are as shown on Engineering design drawings. Their as-constructed location may differ from their design location. Retaining wall heights have been supplied by Colliers.

Compaction of any fill material placed on this site shall be completed to level one inspection and testing services in accordance with AS3798-2007.

Depth of fill values are calculated to the pre-development surface.

December 2023

**FLAGSTONE
 PRECINCT 1 STAGE 3Fii**
 For
**PEET FLAGSTONE
 CITY PTY LTD**

IMPORTANT NOTES:
 (These notes are an integral part of this plan)
 This plan has been prepared for PEET FLAGSTONE CITY PTY LTD for the purposes of a Disclosure Plan Under the Land Sales Act 1984 (as amended). It is not to be used by any other person or corporation or for any other purposes and is subject to the following limitations:

Please refer to the approved Development Application for conditions relating to the LOT and to approved Operational Works drawings for services location and possible easements.

THESE DESIGNS AND DRAWINGS ARE COPYRIGHT AND ARE NOT TO BE USED OR REPRODUCED WITHOUT THE WRITTEN PERMISSION OF VERIS

Data Sources
 Cadastral Boundaries:
 30109-LC-Master(DE) FS94 2014.dwg
 Final Surface Contours:
 FLAGSTONE - STAGE FGH - DISCLOSURE INFO - 16 11 2023 - Design Tin.dwg
 Depth of fill:
 FLAGSTONE - STAGE FGH - DISCLOSURE INFO - 16 11 2023 - Depth Contours.dwg
 Engineering design:
 23-0143_X_BASE_DESIGN_3F.dwg

Issue	Revisions	Date	Drawn
A	Original	22-12-23	RCS

Locality:
 Local Authority: Logan City Council
 Horizontal Meridian: MGA, Zone56
 Vertical Level Datum: AHD D
 Scale: 1:250@ A4
 Designed: Colliers
 Drawn: RCS 22/12/2023
 Checked: DE 22/12/2023
 Plot Date: 22 Dec, 2023
 Computer File Ref: 403109-S13Fii-DP-A.dwg

**DISCLOSURE PLAN
 of Proposed Lot 1380
 being part of
 Lot 910 on SP339534**



veris

BRISBANE (07) 3666 4700 WHITSUNDAYS (07) 4945 6600

MACKAY (07) 4957 9700 CAIRNS (07) 4252 9400

veris.com.au
 ACN 615 735 727
 Veris Australia Pty Ltd

Drawing No 430109-DP-1380 Issue A

LEGEND

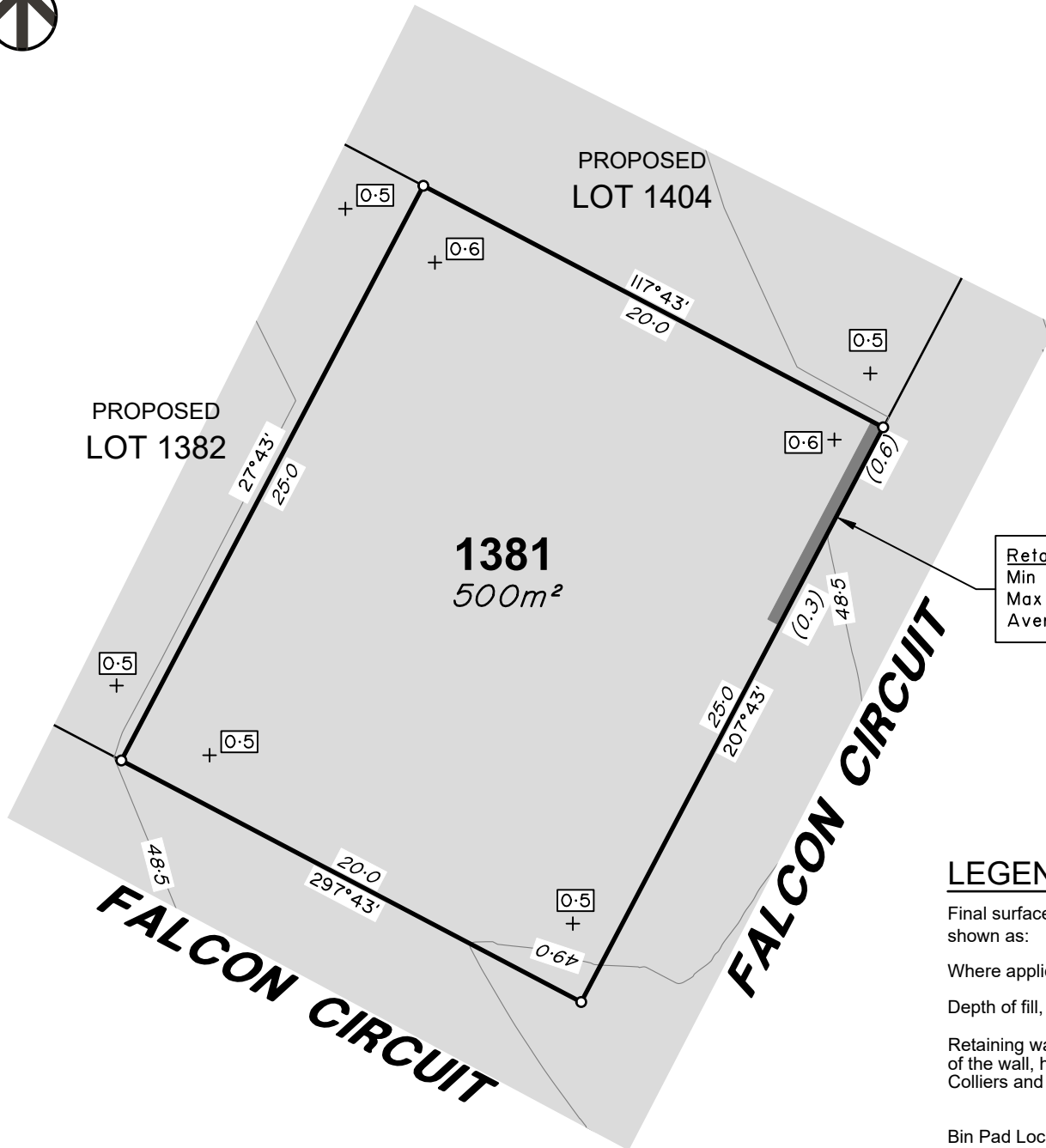
Final surface contours based on A.H.D. datum at an interval of 0.5m, shown as: 1/5.5

Where applicable, areas to be filled are shown as:

Depth of fill, in metres, shown as:- + 0.5

Retaining wall and retaining wall height, shown on the lower side of the wall, have been calculated from digital data supplied by Colliers and shown as: (1.2)

Bin Pad Location shown as:



Retaining Wall Lot 1381
 Min Height:- 0.3m
 Max Height:- 0.6m
 Average Height:- 0.45m

LEGEND

- Final surface contours based on A.H.D. datum at an interval of 0.5m, shown as: 1/5.5
- Where applicable, areas to be filled are shown as:
- Depth of fill, in metres, shown as:- + 0.5
- Retaining wall and retaining wall height, shown on the lower side of the wall, have been calculated from digital data supplied by Colliers and shown as: (1.2)
- Bin Pad Location shown as: *

ADDITIONAL NOTES:
 The LOT dimensions and area shown hereon are subject to final field survey and also to the requirements of Council and any other authority which may have requirements under any relevant legislation.

Final surface contours shown hereon have been supplied by Colliers.

Location of retaining walls are as shown on Engineering design drawings. Their as-constructed location may differ from their design location. Retaining wall heights have been supplied by Colliers.

Compaction of any fill material placed on this site shall be completed to level one inspection and testing services in accordance with AS3798-2007.

Depth of fill values are calculated to the pre-development surface.

December 2023

**FLAGSTONE
 PRECINCT 1 STAGE 3Fii**
 For
**PEET FLAGSTONE
 CITY PTY LTD**

IMPORTANT NOTES:
 (These notes are an integral part of this plan)

This plan has been prepared for PEET FLAGSTONE CITY PTY LTD for the purposes of a Disclosure Plan Under the Land Sales Act 1984 (as amended). It is not to be used by any other person or corporation or for any other purposes and is subject to the following limitations:

Please refer to the approved Development Application for conditions relating to the LOT and to approved Operational Works drawings for services location and possible easements.

THESE DESIGNS AND DRAWINGS ARE COPYRIGHT AND ARE NOT TO BE USED OR REPRODUCED WITHOUT THE WRITTEN PERMISSION OF VERIS

Data Sources
 Cadastral Boundaries:
 30109-LC-Master(DE) FS94 2014.dwg
 Final Surface Contours:
 FLAGSTONE - STAGE FGH - DISCLOSURE INFO - 16 11 2023 - Design Tin.dwg
 Depth of fill:
 FLAGSTONE - STAGE FGH - DISCLOSURE INFO - 16 11 2023 - Depth Contours.dwg
 Engineering design:
 23-0143_X_BASE_DESIGN_3F.dwg

Issue	Revisions	Date	Drawn
A	Original	22-12-23	RCS

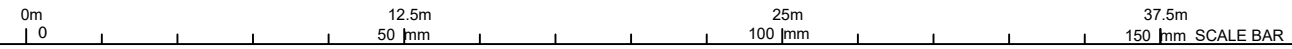
Locality:
 Local Authority: Logan City Council
 Horizontal Meridian: MGA, Zone56
 Vertical Level Datum: AHD D
 Scale: 1:250@ A4
 Designed: Colliers
 Drawn: RCS 22/12/2023
 Checked: DE 22/12/2023
 Plot Date: 22 Dec, 2023
 Computer File Ref: 403109-S13Fii-DP-A.dwg

**DISCLOSURE PLAN
 of Proposed Lot 1381
 being part of
 Lot 910 on SP339534**



veris

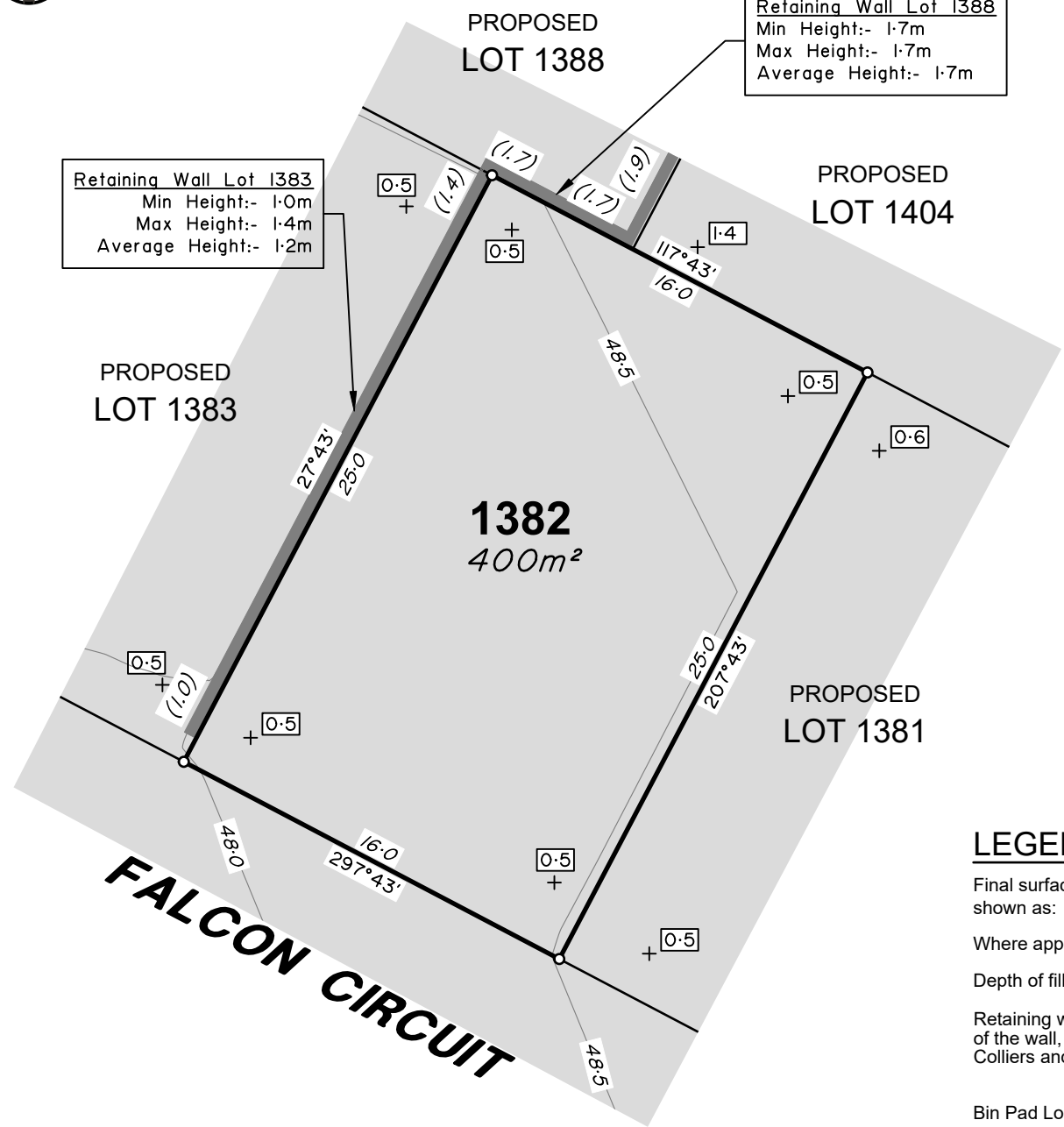
BRISBANE (07) 3666 4700 WHITSUNDAYS (07) 4945 6600
 MACKAY (07) 4957 9700 CAIRNS (07) 4252 9400
 veris.com.au
 ACN 615 735 727
 Veris Australia Pty Ltd





Retaining Wall Lot 1388
 Min Height:- 1.7m
 Max Height:- 1.7m
 Average Height:- 1.7m

Retaining Wall Lot 1383
 Min Height:- 1.0m
 Max Height:- 1.4m
 Average Height:- 1.2m



ADDITIONAL NOTES:
 The LOT dimensions and area shown hereon are subject to final field survey and also to the requirements of Council and any other authority which may have requirements under any relevant legislation.

Final surface contours shown hereon have been supplied by Colliers.

Location of retaining walls are as shown on Engineering design drawings. Their as-constructed location may differ from their design location. Retaining wall heights have been supplied by Colliers.

Compaction of any fill material placed on this site shall be completed to level one inspection and testing services in accordance with AS3798-2007.

Depth of fill values are calculated to the pre-development surface.

December 2023

**FLAGSTONE
 PRECINCT 1 STAGE 3Fii**
 For
**PEET FLAGSTONE
 CITY PTY LTD**

IMPORTANT NOTES:
 (These notes are an integral part of this plan)
 This plan has been prepared for PEET FLAGSTONE CITY PTY LTD for the purposes of a Disclosure Plan Under the Land Sales Act 1984 (as amended). It is not to be used by any other person or corporation or for any other purposes and is subject to the following limitations:

Please refer to the approved Development Application for conditions relating to the LOT and to approved Operational Works drawings for services location and possible easements.

THESE DESIGNS AND DRAWINGS ARE COPYRIGHT AND ARE NOT TO BE USED OR REPRODUCED WITHOUT THE WRITTEN PERMISSION OF VERIS

Data Sources
 Cadastral Boundaries:
 30109-LC-Master(DE) FS94 2014.dwg
 Final Surface Contours:
 FLAGSTONE - STAGE FGH - DISCLOSURE INFO - 16 11 2023 - Design Tin.dwg
 Depth of fill:
 FLAGSTONE - STAGE FGH - DISCLOSURE INFO - 16 11 2023 - Depth Contours.dwg
 Engineering design:
 23-0143_X_BASE_DESIGN_3F.dwg

Issue	Revisions	Date	Drawn
A	Original	22-12-23	RCS

Locality:
 Local Authority: Logan City Council
 Horizontal Meridian: MGA, Zone56
 Vertical Level Datum: AHD D
 Scale: 1:250 @ A4
 Designed: Colliers
 Drawn: RCS 22/12/2023
 Checked: DE 22/12/2023
 Plot Date: 22 Dec, 2023
 Computer File Ref: 403109-S13Fii-DP-A.dwg

**DISCLOSURE PLAN
 of Proposed Lot 1382
 being part of
 Lot 910 on SP339534**



veris

BRISBANE WHITSUNDAYS
 (07) 3666 4700 (07) 4945 6600
 MACKAY CAIRNS
 (07) 4957 9700 (07) 4252 9400

veris.com.au
 ACN 615 735 727
 Veris Australia Pty Ltd

Drawing No 430109-DP-1382 Issue A

LEGEND

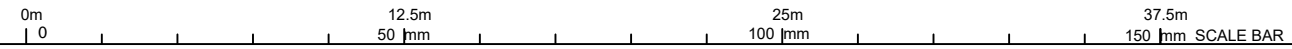
Final surface contours based on A.H.D. datum at an interval of 0.5m, shown as: 1/5.5

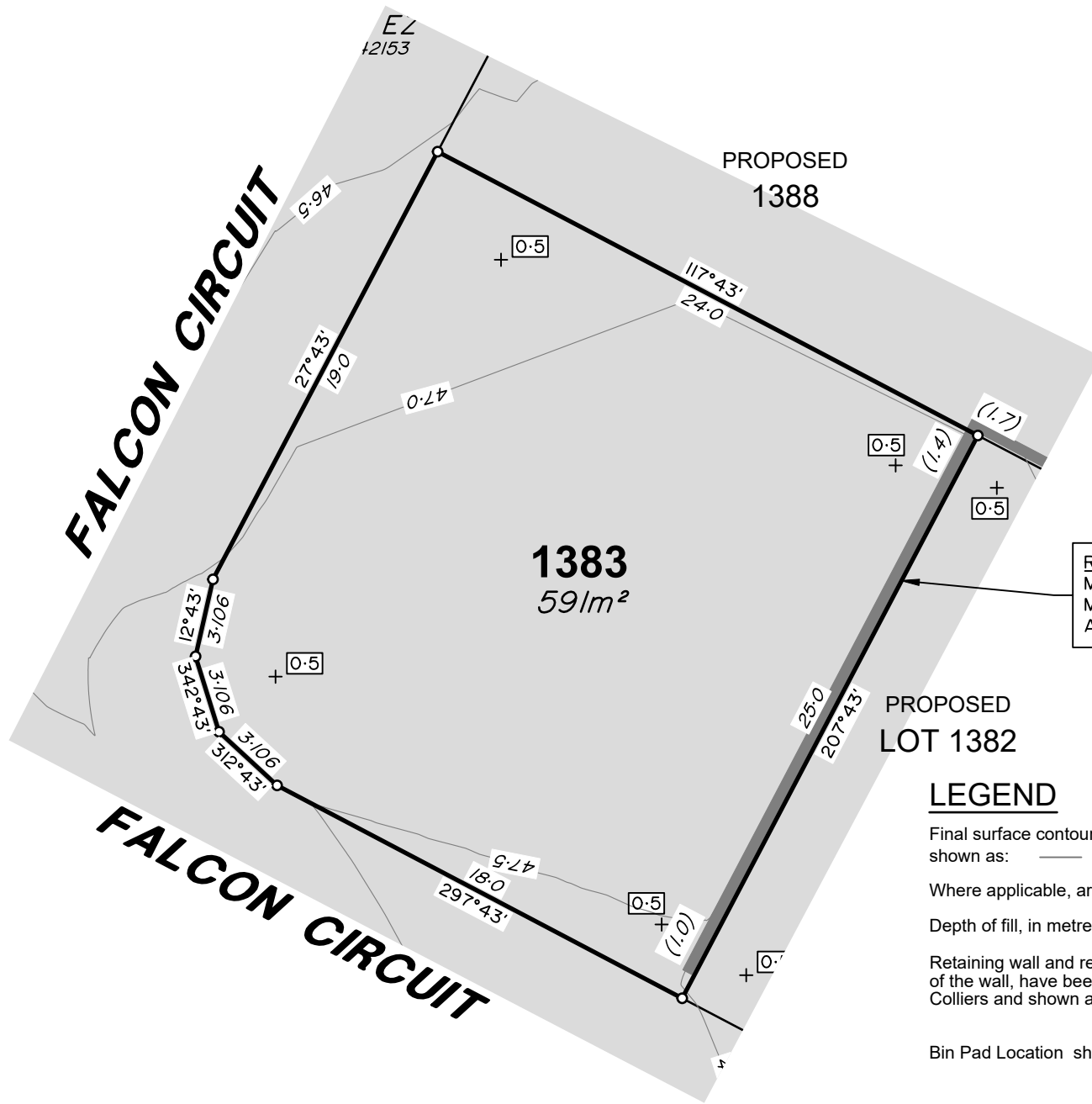
Where applicable, areas to be filled are shown as:

Depth of fill, in metres, shown as: + 0.5

Retaining wall and retaining wall height, shown on the lower side of the wall, have been calculated from digital data supplied by Colliers and shown as: (1.2)

Bin Pad Location shown as:



**ADDITIONAL NOTES:**

The LOT dimensions and area shown hereon are subject to final field survey and also to the requirements of Council and any other authority which may have requirements under any relevant legislation.

Final surface contours shown hereon have been supplied by Colliers.

Location of retaining walls are as shown on Engineering design drawings. Their as-constructed location may differ from their design location. Retaining wall heights have been supplied by Colliers.

Compaction of any fill material placed on this site shall be completed to level one inspection and testing services in accordance with AS3798-2007.

Depth of fill values are calculated to the pre-development surface.

December 2023

Retaining Wall Lot 1383
 Min Height:- 1.0m
 Max Height:- 1.4m
 Average Height:- 1.2m

LEGEND

Final surface contours based on A.H.D. datum at an interval of 0.5m, shown as: — 1/5.5 —

Where applicable, areas to be filled are shown as:

Depth of fill, in metres, shown as:- + 0.5

Retaining wall and retaining wall height, shown on the lower side of the wall, have been calculated from digital data supplied by Colliers and shown as:

Bin Pad Location shown as: *



**FLAGSTONE
 PRECINCT 1 STAGE 3Fii**
 For
**PEET FLAGSTONE
 CITY PTY LTD**

IMPORTANT NOTES:
 (These notes are an integral part of this plan)
 This plan has been prepared for PEET FLAGSTONE CITY PTY LTD for the purposes of a Disclosure Plan Under the Land Sales Act 1984 (as amended). It is not to be used by any other person or corporation or for any other purposes and is subject to the following limitations:

Please refer to the approved Development Application for conditions relating to the LOT and to approved Operational Works drawings for services location and possible easements.

THESE DESIGNS AND DRAWINGS ARE COPYRIGHT AND ARE NOT TO BE USED OR REPRODUCED WITHOUT THE WRITTEN PERMISSION OF VERIS

Data Sources
 Cadastral Boundaries:
 30109-LC-Master(DE) FS94 2014.dwg
 Final Surface Contours:
 FLAGSTONE - STAGE FGH - DISCLOSURE INFO - 16 11 2023 - Design Tin.dwg
 Depth of fill:
 FLAGSTONE - STAGE FGH - DISCLOSURE INFO - 16 11 2023 - Depth Contours.dwg
 Engineering design:
 23-0143_X_BASE_DESIGN_3F.dwg

Issue	Revisions	Date	Drawn
A	Original	22.12.23	RCS

Locality:
 Local Authority: Logan City Council
 Horizontal Meridian: MGA, Zone56
 Vertical Level Datum: AHD D
 Scale: 1:250@ A4
 Designed: Colliers
 Drawn: RCS 22/12/2023
 Checked: DE 22/12/2023
 Plot Date: 22 Dec, 2023
 Computer File Ref: 403109-S13Fii-DP-A.dwg

**DISCLOSURE PLAN
 of Proposed Lot 1383
 being part of
 Lot 910 on SP339534**

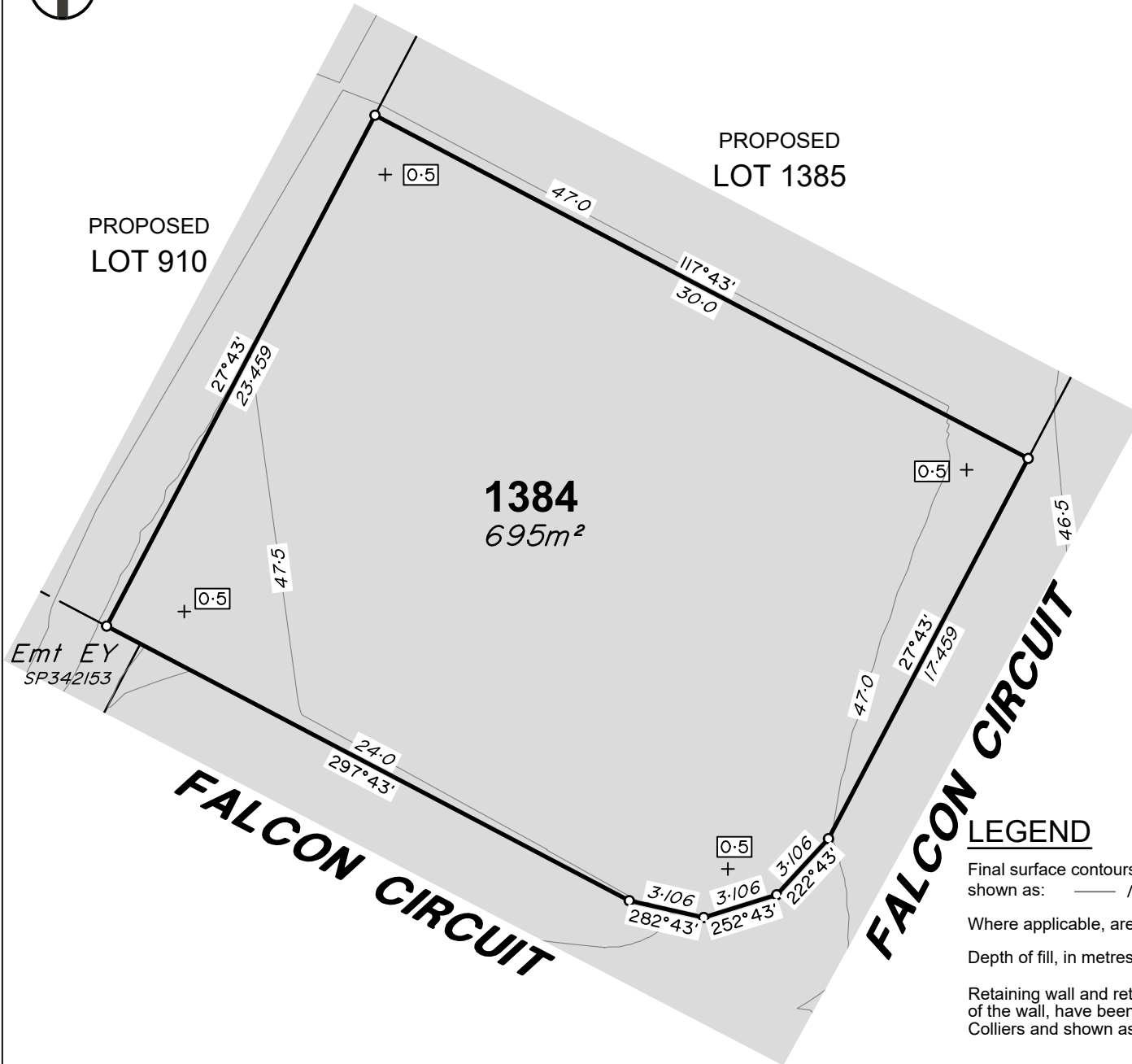


veris

BRISBANE WHITSUNDAYS
 (07) 3666 4700 (07) 4945 6600
 MACKAY CAIRNS
 (07) 4957 9700 (07) 4252 9400

veris.com.au
 ACN 615 735 727
 Veris Australia Pty Ltd

Drawing No 430109-DP-1383 Issue A



ADDITIONAL NOTES:

The LOT dimensions and area shown hereon are subject to final field survey and also to the requirements of Council and any other authority which may have requirements under any relevant legislation.

Final surface contours shown hereon have been supplied by Colliers.

Location of retaining walls are as shown on Engineering design drawings. Their as-constructed location may differ from their design location. Retaining wall heights have been supplied by Colliers.

Compaction of any fill material placed on this site shall be completed to level one inspection and testing services in accordance with AS3798-2007.

Depth of fill values are calculated to the pre-development surface.

December 2023

**FLAGSTONE
PRECINCT 1 STAGE 3Fii**

For
**PEET FLAGSTONE
CITY PTY LTD**

IMPORTANT NOTES:
(These notes are an integral part of this plan)

This plan has been prepared for PEET FLAGSTONE CITY PTY LTD for the purposes of a Disclosure Plan Under the Land Sales Act 1984 (as amended).

It is not to be used by any other person or corporation or for any other purposes and is subject to the following limitations:

Please refer to the approved Development Application for conditions relating to the LOT and to approved Operational Works drawings for services location and possible easements.

THESE DESIGNS AND DRAWINGS ARE COPYRIGHT AND ARE NOT TO BE USED OR REPRODUCED WITHOUT THE WRITTEN PERMISSION OF VERIS

Data Sources
 Cadastral Boundaries:
 30109-LC-Master(DE) FS94 2014.dwg
 Final Surface Contours:
 FLAGSTONE - STAGE FGH - DISCLOSURE INFO - 16 11 2023 - Design Tin.dwg
 Depth of fill:
 FLAGSTONE - STAGE FGH - DISCLOSURE INFO - 16 11 2023 - Depth Contours.dwg
 Engineering design:
 23-0143_X_BASE_DESIGN_3F.dwg

Issue	Revisions	Date	Drawn
A	Original	22-12-23	RCS

Locality:
 Local Authority: Logan City Council
 Horizontal Meridian: MGA, Zone56
 Vertical Level Datum: AHD D
 Scale: 1:250@ A4
 Designed: Colliers
 Drawn: RCS 22/12/2023
 Checked: DE 22/12/2023
 Plot Date: 22 Dec, 2023
 Computer File Ref: 403109-S13Fii-DP-A.dwg

DISCLOSURE PLAN
 of Proposed Lot 1384
 being part of
 Lot 910 on SP339534



veris

BRISBANE (07) 3666 4700 WHITSUNDAYS (07) 4945 6600

MACKAY (07) 4957 9700 CAIRNS (07) 4252 9400

veris.com.au
ACN 615 735 727
Veris Australia Pty Ltd

Drawing No 430109-DP-1384 Issue A

LEGEND

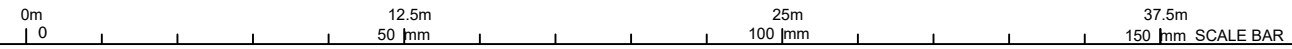
Final surface contours based on A.H.D. datum at an interval of 0.5m, shown as: 15.5

Where applicable, areas to be filled are shown as:

Depth of fill, in metres, shown as:- + 0.5

Retaining wall and retaining wall height, shown on the lower side of the wall, have been calculated from digital data supplied by Colliers and shown as: (1.2)

Bin Pad Location shown as:





LEGEND

Final surface contours based on A.H.D. datum at an interval of 0.5m, shown as: $\text{---} / 5.5 \text{---}$

Where applicable, areas to be filled are shown as:

Depth of fill, in metres, shown as:- + $\boxed{0.5}$

Retaining wall and retaining wall height, shown on the lower side of the wall, have been calculated from digital data supplied by Colliers and shown as: $\text{---} (1.2)$

Bin Pad Location shown as: *

ADDITIONAL NOTES:

The LOT dimensions and area shown hereon are subject to final field survey and also to the requirements of Council and any other authority which may have requirements under any relevant legislation.

Final surface contours shown hereon have been supplied by Colliers.

Location of retaining walls are as shown on Engineering design drawings. Their as-constructed location may differ from their design location. Retaining wall heights have been supplied by Colliers.

Compaction of any fill material placed on this site shall be completed to level one inspection and testing services in accordance with AS3798-2007.

Depth of fill values are calculated to the pre-development surface.

December 2023

FLAGSTONE PRECINCT 1 STAGE 3Fii For PEET FLAGSTONE CITY PTY LTD

IMPORTANT NOTES:
(These notes are an integral part of this plan)
This plan has been prepared for PEET FLAGSTONE CITY PTY LTD for the purposes of a Disclosure Plan Under the Land Sales Act 1984 (as amended). It is not to be used by any other person or corporation or for any other purposes and is subject to the following limitations:

Please refer to the approved Development Application for conditions relating to the LOT and to approved Operational Works drawings for services location and possible easements.

THESE DESIGNS AND DRAWINGS ARE COPYRIGHT AND ARE NOT TO BE USED OR REPRODUCED WITHOUT THE WRITTEN PERMISSION OF VERIS

Data Sources
Cadastral Boundaries:
30109-LC-Master(DE) FS94 2014.dwg
Final Surface Contours:
FLAGSTONE - STAGE FGH - DISCLOSURE INFO - 16 11 2023 - Design Tin.dwg
Depth of fill:
FLAGSTONE - STAGE FGH - DISCLOSURE INFO - 16 11 2023 - Depth Contours.dwg
Engineering design:
23-0143_X_BASE_DESIGN_3F.dwg

Issue	Revisions	Date	Drawn
A	Original	22-12-23	RCS

Locality:
Local Authority: Logan City Council
Horizontal Meridian: MGA, Zone56
Vertical Level Datum: AHD D
Scale: 1:250@ A4
Designed by: Colliers
Drawn: RCS 22/12/2023
Checked: DE 22/12/2023
Plot Date: 22 Dec, 2023
Computer File Ref: 403109-S13Fii-DP-A.dwg

DISCLOSURE PLAN of Proposed Lot 1402 being part of Lot 910 on SP339534



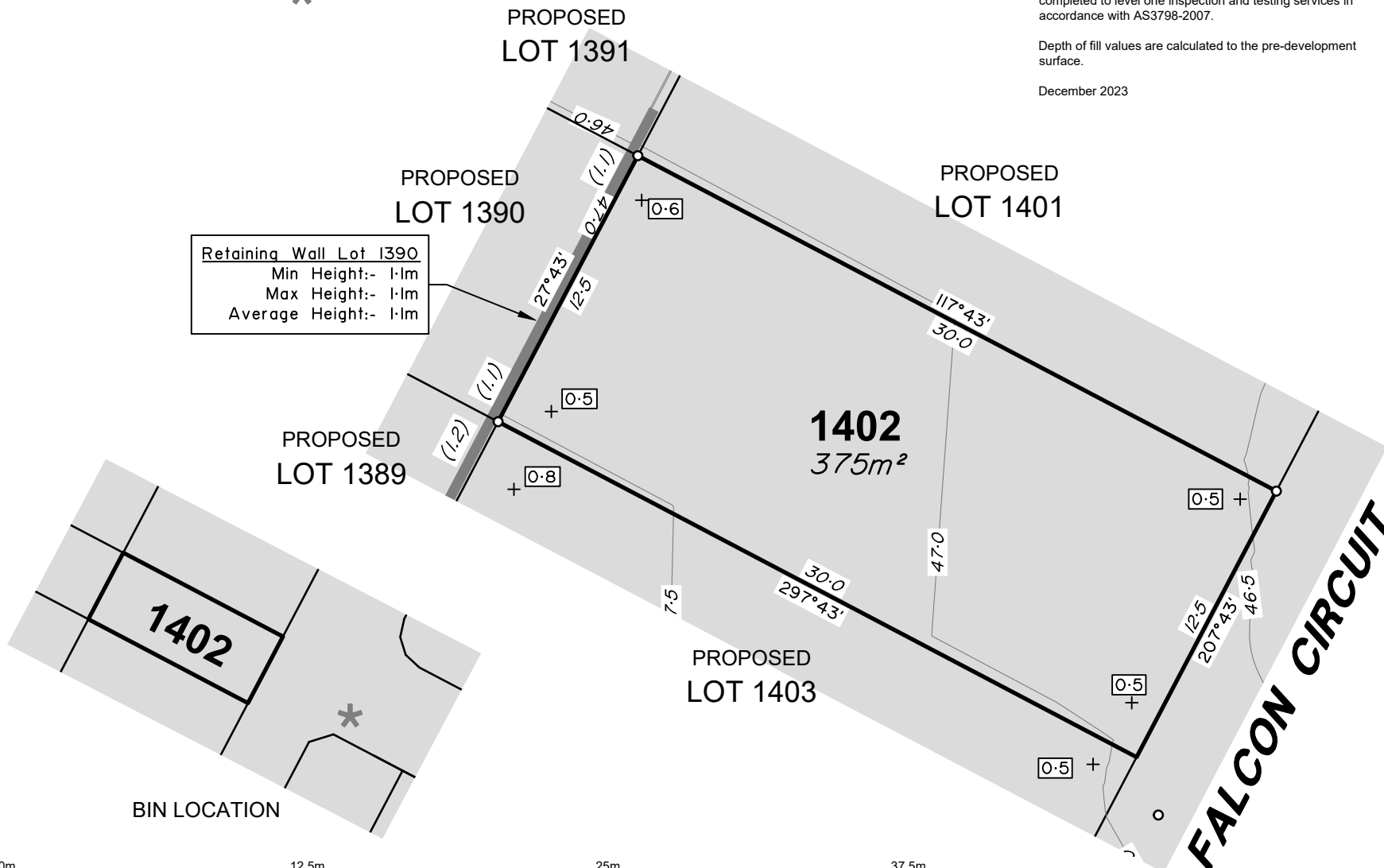
veris

BRISBANE (07) 3666 4700 WHITSUNDAYS (07) 4945 6600

MACKAY (07) 4957 9700 CAIRNS (07) 4252 9400

veris.com.au
ACN 615 735 727
Veris Australia Pty Ltd

Drawing No 430109-DP-1402 Issue A



Retaining Wall Lot 1390
Min Height:- 1.1m
Max Height:- 1.1m
Average Height:- 1.1m

BIN LOCATION





LEGEND

Final surface contours based on A.H.D. datum at an interval of 0.5m, shown as: $\text{---} / 5 \text{---}$

Where applicable, areas to be filled are shown as:

Depth of fill, in metres, shown as:- + $\boxed{0.5}$

Retaining wall and retaining wall height, shown on the lower side of the wall, have been calculated from digital data supplied by Colliers and shown as: $\text{---} (1.2)$

Bin Pad Location shown as: *

ADDITIONAL NOTES:

The LOT dimensions and area shown hereon are subject to final field survey and also to the requirements of Council and any other authority which may have requirements under any relevant legislation.

Final surface contours shown hereon have been supplied by Colliers.

Location of retaining walls are as shown on Engineering design drawings. Their as-constructed location may differ from their design location. Retaining wall heights have been supplied by Colliers.

Compaction of any fill material placed on this site shall be completed to level one inspection and testing services in accordance with AS3798-2007.

Depth of fill values are calculated to the pre-development surface.

December 2023

FLAGSTONE PRECINCT 1 STAGE 3Fii For PEET FLAGSTONE CITY PTY LTD

IMPORTANT NOTES:
(These notes are an integral part of this plan)
This plan has been prepared for PEET FLAGSTONE CITY PTY LTD for the purposes of a Disclosure Plan Under the Land Sales Act 1984 (as amended). It is not to be used by any other person or corporation or for any other purposes and is subject to the following limitations:

Please refer to the approved Development Application for conditions relating to the LOT and to approved Operational Works drawings for services location and possible easements.

THESE DESIGNS AND DRAWINGS ARE COPYRIGHT AND ARE NOT TO BE USED OR REPRODUCED WITHOUT THE WRITTEN PERMISSION OF VERIS

Data Sources		
Cadastral Boundaries: 30109-LC-Master(DE) FS94 2014.dwg		
Final Surface Contours: FLAGSTONE - STAGE FGH - DISCLOSURE INFO - 16 11 2023 - Design Tin.dwg		
Depth of fill: FLAGSTONE - STAGE FGH - DISCLOSURE INFO - 16 11 2023 - Depth Contours.dwg		
Engineering design: 23-0143_X_BASE_DESIGN_3F.dwg		

Issue	Revisions	Date	Drawn
A	Original	22.12.23	RCS

Locality:	
Local Authority:	Logan City Council
Horizontal Meridian:	MGA, Zone56
Vertical Level Datum:	AHD D
Scale:	1:250@ A4
Designed:	Colliers
Drawn:	RCS 22/12/2023
Checked:	DE 22/12/2023
Plot Date:	22 Dec, 2023
Computer File Ref:	403109-S13Fii-DP-A.dwg

DISCLOSURE PLAN of Proposed Lot 1403 being part of Lot 910 on SP339534



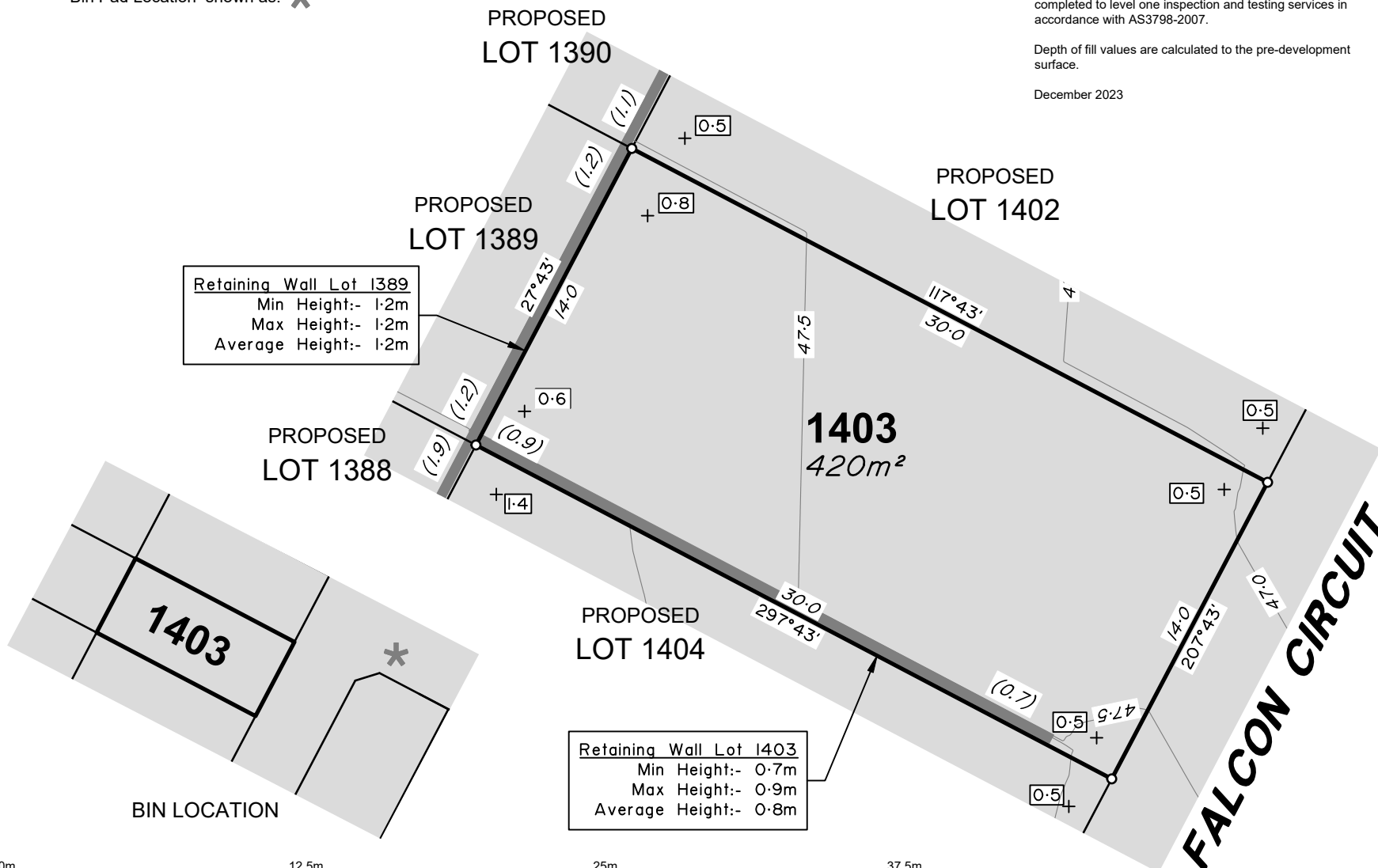
veris

BRISBANE (07) 3666 4700 WHITSUNDAYS (07) 4945 6600

MACKAY (07) 4957 9700 CAIRNS (07) 4252 9400

veris.com.au
ACN 615 735 727
Veris Australia Pty Ltd

Drawing No	Issue
430109-DP-1403	A





LEGEND

Final surface contours based on A.H.D. datum at an interval of 0.5m, shown as: 15.5

Where applicable, areas to be filled are shown as:

Depth of fill, in metres, shown as:- + 0.5

Retaining wall and retaining wall height, shown on the lower side of the wall, have been calculated from digital data supplied by Colliers and shown as: (1.2)

Bin Pad Location shown as: *

ADDITIONAL NOTES:

The LOT dimensions and area shown hereon are subject to final field survey and also to the requirements of Council and any other authority which may have requirements under any relevant legislation.

Final surface contours shown hereon have been supplied by Colliers.

Location of retaining walls are as shown on Engineering design drawings. Their as-constructed location may differ from their design location. Retaining wall heights have been supplied by Colliers.

Compaction of any fill material placed on this site shall be completed to level one inspection and testing services in accordance with AS3798-2007.

Depth of fill values are calculated to the pre-development surface.

December 2023

FLAGSTONE PRECINCT 1 STAGE 3Fii For PEET FLAGSTONE CITY PTY LTD

IMPORTANT NOTES:
(These notes are an integral part of this plan)
This plan has been prepared for PEET FLAGSTONE CITY PTY LTD for the purposes of a Disclosure Plan Under the Land Sales Act 1984 (as amended). It is not to be used by any other person or corporation or for any other purposes and is subject to the following limitations:

Please refer to the approved Development Application for conditions relating to the LOT and to approved Operational Works drawings for services location and possible easements.

THESE DESIGNS AND DRAWINGS ARE COPYRIGHT AND ARE NOT TO BE USED OR REPRODUCED WITHOUT THE WRITTEN PERMISSION OF VERIS

Data Sources
Cadastral Boundaries:
30109-LC-Master(DE) FS94 2014.dwg
Final Surface Contours:
FLAGSTONE - STAGE FGH - DISCLOSURE INFO - 16 11 2023 - Design Tin.dwg
Depth of fill:
FLAGSTONE - STAGE FGH - DISCLOSURE INFO - 16 11 2023 - Depth Contours.dwg
Engineering design:
23-0143_X_BASE_DESIGN_3F.dwg

Issue	Revisions	Date	Drawn
A	Original	22.12.23	RCS

Locality:
Local Authority: Logan City Council
Horizontal Meridian: MGA, Zone56
Vertical Level Datum: AHD D
Scale: 1:250@ A4
Designed by: Colliers
Drawn: RCS 22/12/2023
Checked: DE 22/12/2023
Plot Date: 22 Dec, 2023
Computer File Ref: 403109-S13Fii-DP-A.dwg

DISCLOSURE PLAN of Proposed Lot 1404 being part of Lot 910 on SP339534



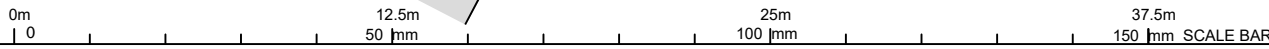
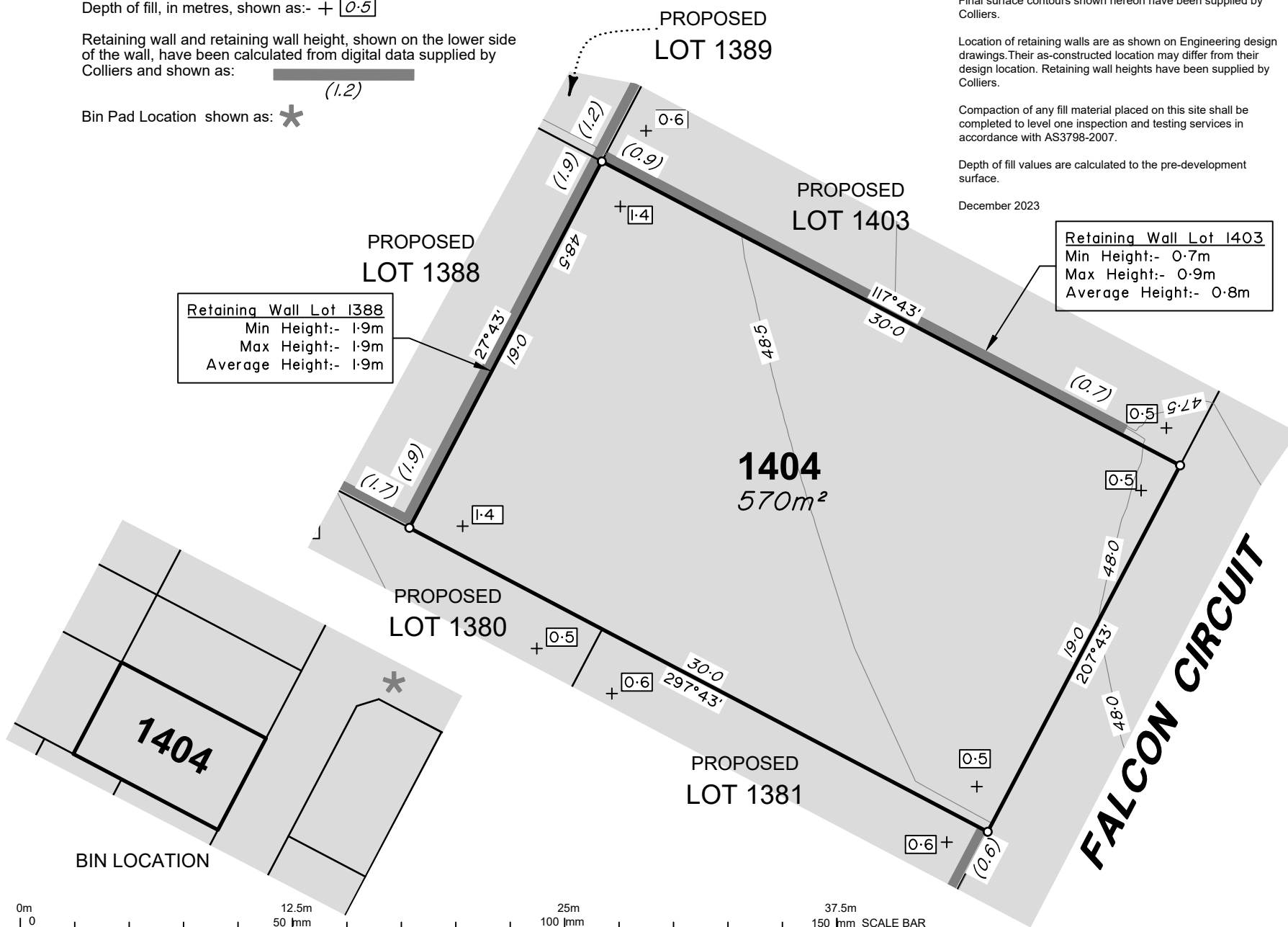
veris

BRISBANE (07) 3666 4700 WHITSUNDAYS (07) 4945 6600

MACKAY (07) 4957 9700 CAIRNS (07) 4252 9400

veris.com.au
ACN 615 735 727
Veris Australia Pty Ltd

Drawing No 430109-DP-1404 Issue A





Retaining Wall Lot 1405
 Min Height:- 0.3m
 Max Height:- 1.1m
 Average Height:- 0.7m

FALCON CIRCUIT

1405
 476m²

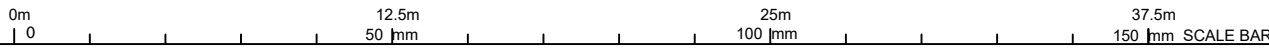
FALCON CIRCUIT

PROPOSED LOT 1406

PROPOSED LOT 1380

Retaining Wall Lot 1405
 Min Height:- 1.9m
 Max Height:- 1.9m
 Average Height:- 1.9m

PROPOSED LOT 1379



ADDITIONAL NOTES:

The LOT dimensions and area shown hereon are subject to final field survey and also to the requirements of Council and any other authority which may have requirements under any relevant legislation.

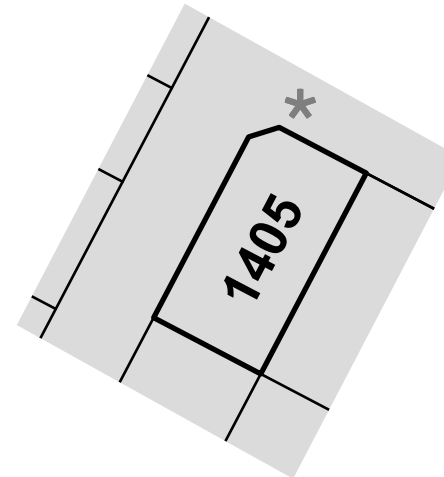
Final surface contours shown hereon have been supplied by Colliers.

Location of retaining walls are as shown on Engineering design drawings. Their as-constructed location may differ from their design location. Retaining wall heights have been supplied by Colliers.

Compaction of any fill material placed on this site shall be completed to level one inspection and testing services in accordance with AS3798-2007.

Depth of fill values are calculated to the pre-development surface.

December 2023



BIN LOCATION

LEGEND

Final surface contours based on A.H.D. datum at an interval of 0.5m, shown as: 1/5.5

Where applicable, areas to be filled are shown as:

Depth of fill, in metres, shown as:- 0.5

Retaining wall and retaining wall height, shown on the lower side of the wall, have been calculated from digital data supplied by Colliers and shown as: (1.2)

Bin Pad Location shown as:

FLAGSTONE PRECINCT 1 STAGE 3Fii
 For
PEET FLAGSTONE CITY PTY LTD

IMPORTANT NOTES:
 (These notes are an integral part of this plan)
 This plan has been prepared for PEET FLAGSTONE CITY PTY LTD for the purposes of a Disclosure Plan Under the Land Sales Act 1984 (as amended). It is not to be used by any other person or corporation or for any other purposes and is subject to the following limitations:

Please refer to the approved Development Application for conditions relating to the LOT and to approved Operational Works drawings for services location and possible easements.

THESE DESIGNS AND DRAWINGS ARE COPYRIGHT AND ARE NOT TO BE USED OR REPRODUCED WITHOUT THE WRITTEN PERMISSION OF VERIS

Data Sources
 Cadastral Boundaries: 30109-LC-Master(DE) FS94 2014.dwg
 Final Surface Contours: FLAGSTONE - STAGE FGH - DISCLOSURE INFO - 16 11 2023 - Design Tin.dwg
 Depth of fill: FLAGSTONE - STAGE FGH - DISCLOSURE INFO - 16 11 2023 - Depth Contours.dwg
 Engineering design: 23-0143_X_BASE_DESIGN_3F.dwg

Issue	Revisions	Date	Drawn
A	Original	22-12-23	RCS

Locality:
 Local Authority: Logan City Council
 Horizontal Meridian: MGA, Zone56
 Vertical Level Datum: AHD D
 Scale: 1:250@ A4
 Designed: Colliers
 Drawn: RCS 22/12/2023
 Checked: DE 22/12/2023
 Plot Date: 22 Dec, 2023
 Computer File Ref: 403109-S13Fii-DP-A.dwg

DISCLOSURE PLAN
 of Proposed Lot 1405
 being part of
 Lot 910 on SP339534

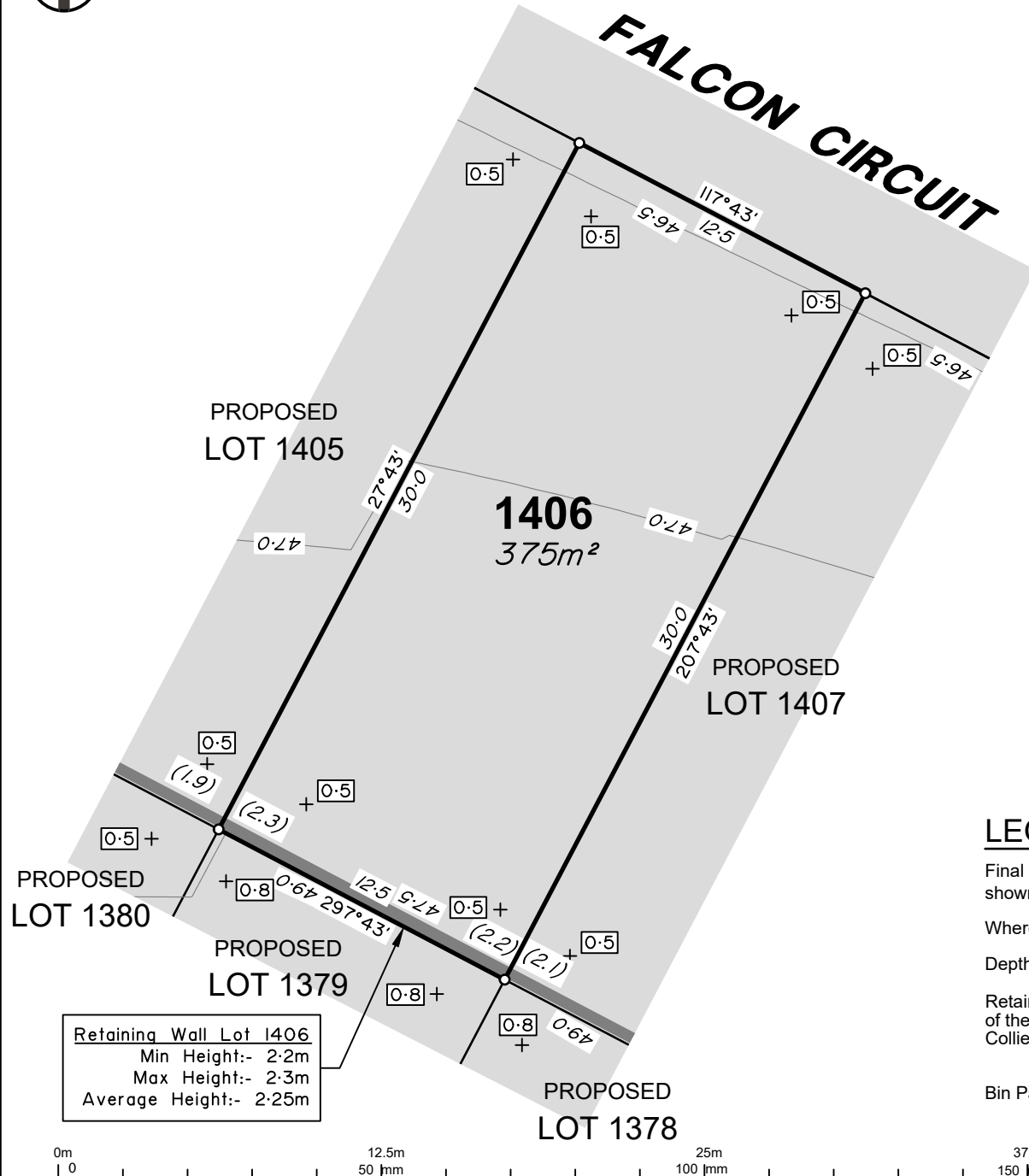


veris

BRISBANE (07) 3666 4700 WHITSUNDAYS (07) 4945 6600
 MACKAY (07) 4957 9700 CAIRNS (07) 4252 9400

veris.com.au
 ACN 615 735 727
 Veris Australia Pty Ltd

Drawing No: 430109-DP-1405 Issue: A



ADDITIONAL NOTES:

The LOT dimensions and area shown hereon are subject to final field survey and also to the requirements of Council and any other authority which may have requirements under any relevant legislation.

Final surface contours shown hereon have been supplied by Colliers.

Location of retaining walls are as shown on Engineering design drawings. Their as-constructed location may differ from their design location. Retaining wall heights have been supplied by Colliers.

Compaction of any fill material placed on this site shall be completed to level one inspection and testing services in accordance with AS3798-2007.

Depth of fill values are calculated to the pre-development surface.

December 2023

**FLAGSTONE
PRECINCT 1 STAGE 3Fii**

For
**PEET FLAGSTONE
CITY PTY LTD**

IMPORTANT NOTES:
(These notes are an integral part of this plan)

This plan has been prepared for PEET FLAGSTONE CITY PTY LTD for the purposes of a Disclosure Plan Under the Land Sales Act 1984 (as amended).

It is not to be used by any other person or corporation or for any other purposes and is subject to the following limitations:

Please refer to the approved Development Application for conditions relating to the LOT and to approved Operational Works drawings for services location and possible easements.

THESE DESIGNS AND DRAWINGS ARE COPYRIGHT AND ARE NOT TO BE USED OR REPRODUCED WITHOUT THE WRITTEN PERMISSION OF VERIS

Data Sources
 Cadastral Boundaries:
 30109-LC-Master(DE) FS94 2014.dwg
 Final Surface Contours:
 FLAGSTONE - STAGE FGH - DISCLOSURE INFO - 16 11 2023 - Design Tin.dwg
 Depth of fill:
 FLAGSTONE - STAGE FGH - DISCLOSURE INFO - 16 11 2023 - Depth Contours.dwg
 Engineering design:
 23-0143_X_BASE_DESIGN_3F.dwg

Issue	Revisions	Date	Drawn
A	Original	22-12-23	RCS

Locality:
 Local Authority: Logan City Council
 Horizontal Meridian: MGA, Zone56
 Vertical Level Datum: AHD D
 Scale: 1:250@ A4
 Designed: Colliers
 Drawn: RCS 22/12/2023
 Checked: DE 22/12/2023
 Plot Date: 22 Dec, 2023
 Computer File Ref: 403109-S13Fii-DP-A.dwg

**DISCLOSURE PLAN
of Proposed Lot 1406
being part of
Lot 910 on SP339534**



veris

BRISBANE WHITSUNDAYS
 (07) 3666 4700 (07) 4945 6600
 MACKAY CAIRNS
 (07) 4957 9700 (07) 4252 9400

veris.com.au
 ACN 615 735 727
 Veris Australia Pty Ltd

Drawing No 430109-DP-1406 Issue A

LEGEND

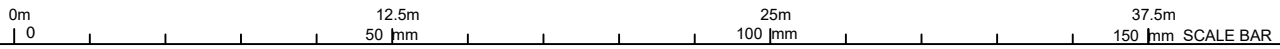
Final surface contours based on A.H.D. datum at an interval of 0.5m, shown as: 1/5.5

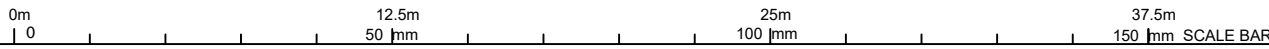
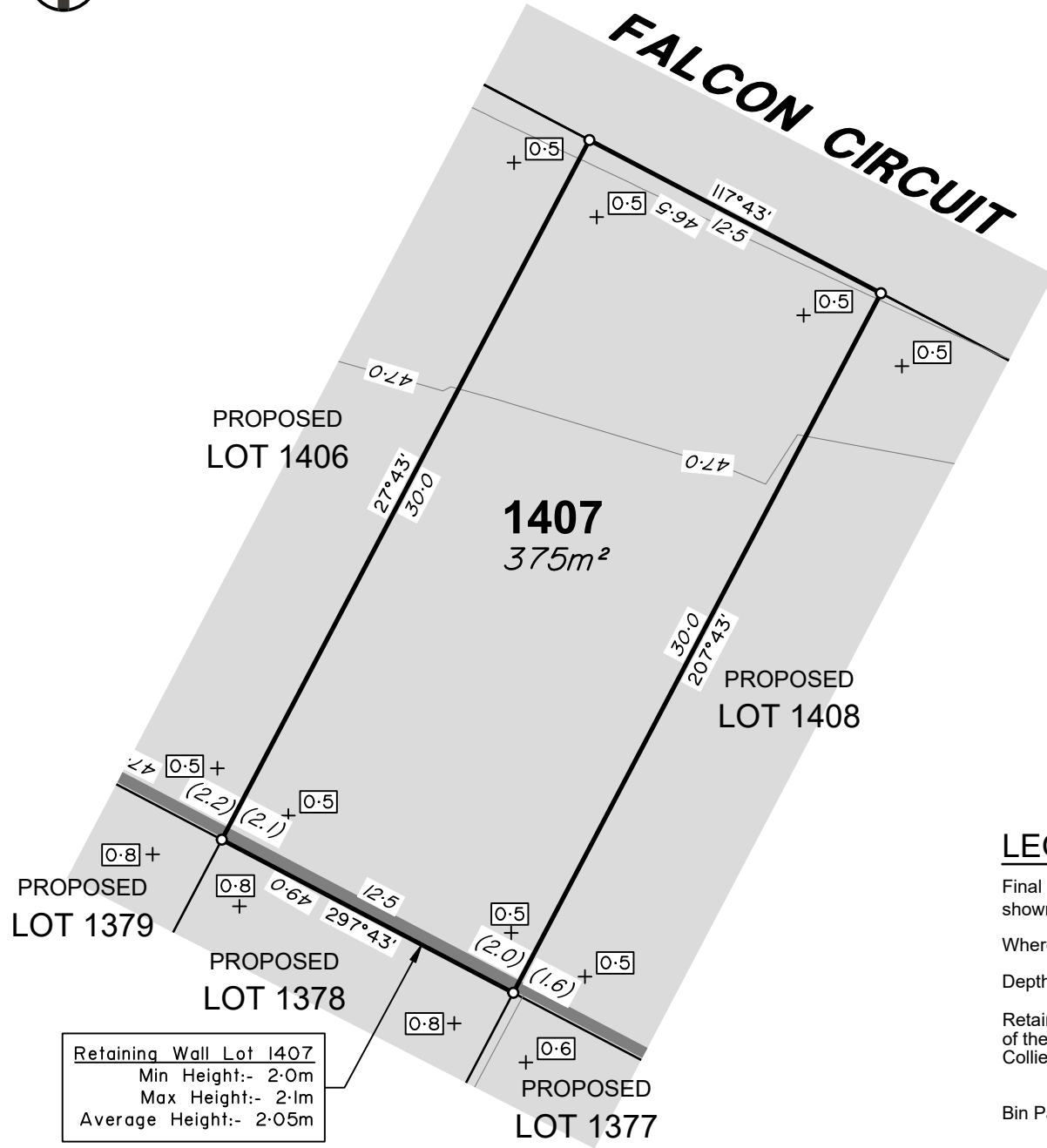
Where applicable, areas to be filled are shown as:

Depth of fill, in metres, shown as:- + 0.5

Retaining wall and retaining wall height, shown on the lower side of the wall, have been calculated from digital data supplied by Colliers and shown as: (1.2)

Bin Pad Location shown as:





ADDITIONAL NOTES:

The LOT dimensions and area shown hereon are subject to final field survey and also to the requirements of Council and any other authority which may have requirements under any relevant legislation.

Final surface contours shown hereon have been supplied by Colliers.

Location of retaining walls are as shown on Engineering design drawings. Their as-constructed location may differ from their design location. Retaining wall heights have been supplied by Colliers.

Compaction of any fill material placed on this site shall be completed to level one inspection and testing services in accordance with AS3798-2007.

Depth of fill values are calculated to the pre-development surface.

December 2023

**FLAGSTONE
PRECINCT 1 STAGE 3Fii**
For
**PEET FLAGSTONE
CITY PTY LTD**

IMPORTANT NOTES:
(These notes are an integral part of this plan)
This plan has been prepared for PEET FLAGSTONE CITY PTY LTD for the purposes of a Disclosure Plan Under the Land Sales Act 1984 (as amended). It is not to be used by any other person or corporation or for any other purposes and is subject to the following limitations:
Please refer to the approved Development Application for conditions relating to the LOT and to approved Operational Works drawings for services location and possible easements.

THESE DESIGNS AND DRAWINGS ARE COPYRIGHT AND ARE NOT TO BE USED OR REPRODUCED WITHOUT THE WRITTEN PERMISSION OF VERIS

Data Sources
Cadastral Boundaries:
30109-LC-Master(DE) FS94 2014.dwg
Final Surface Contours:
FLAGSTONE - STAGE FGH - DISCLOSURE INFO - 16 11 2023 - Design Tin.dwg
Depth of fill:
FLAGSTONE - STAGE FGH - DISCLOSURE INFO - 16 11 2023 - Depth Contours.dwg
Engineering design:
23-0143_X_BASE_DESIGN_3F.dwg

Issue	Revisions	Date	Drawn
A	Original	22-12-23	RCS

Locality:
Local Authority: Logan City Council
Horizontal Meridian: MGA, Zone56
Vertical Level Datum: AHD D
Scale: 1:250@ A4
Designed: Colliers
Drawn: RCS 22/12/2023
Checked: DE 22/12/2023
Plot Date: 22 Dec, 2023
Computer File Ref: 403109-S13Fii-DP-A.dwg

**DISCLOSURE PLAN
of Proposed Lot 1407
being part of
Lot 910 on SP339534**



veris

BRISBANE WHITSUNDAYS
(07) 3666 4700 (07) 4945 6600
MACKAY CAIRNS
(07) 4957 9700 (07) 4252 9400
veris.com.au
ACN 615 735 727
Veris Australia Pty Ltd

Drawing No 430109-DP-1407 Issue A

LEGEND

Final surface contours based on A.H.D. datum at an interval of 0.5m, shown as: 1/5.5

Where applicable, areas to be filled are shown as:

Depth of fill, in metres, shown as:- + 0.5

Retaining wall and retaining wall height, shown on the lower side of the wall, have been calculated from digital data supplied by Colliers and shown as: (1.2)

Bin Pad Location shown as:



FALCON CIRCUIT

PROPOSED LOT 1407

1408
375m²

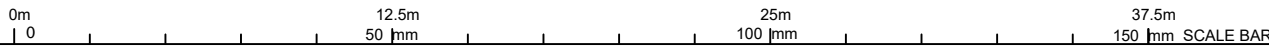
PROPOSED LOT 1409

PROPOSED LOT 1378

PROPOSED LOT 1377

PROPOSED LOT 1376

Retaining Wall Lot 1408
 Min Height:- 1.5m
 Max Height:- 1.6m
 Average Height:- 1.55m



ADDITIONAL NOTES:

The LOT dimensions and area shown hereon are subject to final field survey and also to the requirements of Council and any other authority which may have requirements under any relevant legislation.

Final surface contours shown hereon have been supplied by Colliers.

Location of retaining walls are as shown on Engineering design drawings. Their as-constructed location may differ from their design location. Retaining wall heights have been supplied by Colliers.

Compaction of any fill material placed on this site shall be completed to level one inspection and testing services in accordance with AS3798-2007.

Depth of fill values are calculated to the pre-development surface.

December 2023

**FLAGSTONE
 PRECINCT 1 STAGE 3Fii**
 For
**PEET FLAGSTONE
 CITY PTY LTD**

IMPORTANT NOTES:
 (These notes are an integral part of this plan)

This plan has been prepared for PEET FLAGSTONE CITY PTY LTD for the purposes of a Disclosure Plan Under the Land Sales Act 1984 (as amended). It is not to be used by any other person or corporation or for any other purposes and is subject to the following limitations:

Please refer to the approved Development Application for conditions relating to the LOT and to approved Operational Works drawings for services location and possible easements.

THESE DESIGNS AND DRAWINGS ARE COPYRIGHT AND ARE NOT TO BE USED OR REPRODUCED WITHOUT THE WRITTEN PERMISSION OF VERIS

Data Sources

Cadastral Boundaries:	30109-LC-Master(DE) FS94 2014.dwg
Final Surface Contours:	FLAGSTONE - STAGE FGH - DISCLOSURE INFO - 16 11 2023 - Design Tin.dwg
Depth of fill:	FLAGSTONE - STAGE FGH - DISCLOSURE INFO - 16 11 2023 - Depth Contours.dwg
Engineering design:	23-0143_X_BASE_DESIGN_3F.dwg

Issue	Revisions	Date	Drawn
A	Original	22-12-23	RCS

Locality:
 Local Authority: Logan City Council
 Horizontal Meridian: MGA, Zone56
 Vertical Level Datum: AHD D
 Scale: 1:250@ A4
 Designed: Colliers
 Drawn: RCS 22/12/2023
 Checked: DE 22/12/2023
 Plot Date: 22 Dec, 2023
 Computer File Ref: 403109-S13Fii-DP-A.dwg

**DISCLOSURE PLAN
 of Proposed Lot 1408
 being part of
 Lot 910 on SP339534**



veris

BRISBANE (07) 3666 4700
 WHITSUNDAYS (07) 4945 6600
 MACKAY (07) 4957 9700
 CAIRNS (07) 4252 9400

veris.com.au
 ACN 615 735 727
 Veris Australia Pty Ltd

Drawing No: 430109-DP-1408
 Issue: A

LEGEND

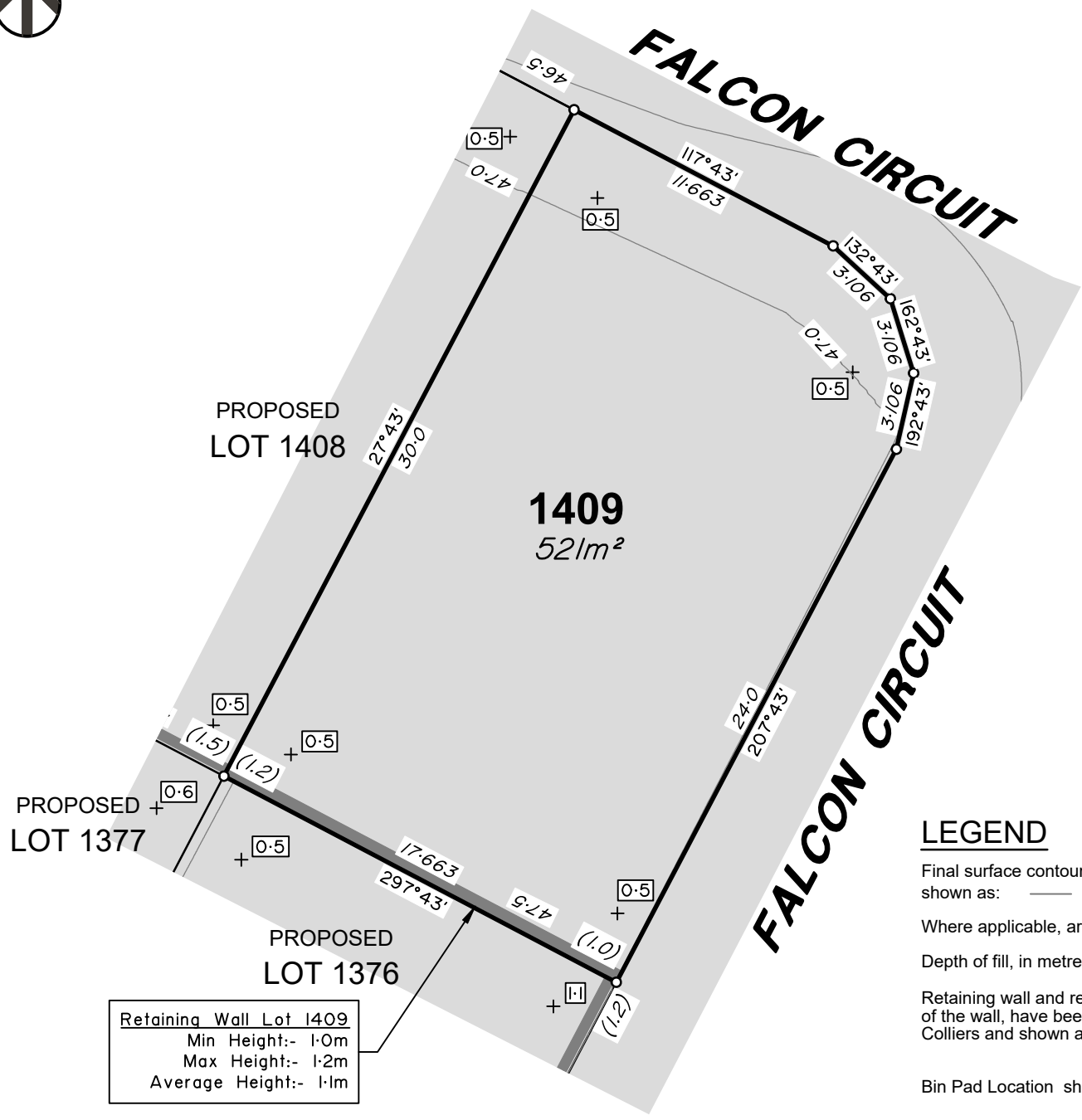
Final surface contours based on A.H.D. datum at an interval of 0.5m, shown as: 1/5.5

Where applicable, areas to be filled are shown as:

Depth of fill, in metres, shown as:- + 0.5

Retaining wall and retaining wall height, shown on the lower side of the wall, have been calculated from digital data supplied by Colliers and shown as: (1.2)

Bin Pad Location shown as:



Retaining Wall Lot 1409
 Min Height:- 1.0m
 Max Height:- 1.2m
 Average Height:- 1.1m

ADDITIONAL NOTES:

The LOT dimensions and area shown hereon are subject to final field survey and also to the requirements of Council and any other authority which may have requirements under any relevant legislation.

Final surface contours shown hereon have been supplied by Colliers.

Location of retaining walls are as shown on Engineering design drawings. Their as-constructed location may differ from their design location. Retaining wall heights have been supplied by Colliers.

Compaction of any fill material placed on this site shall be completed to level one inspection and testing services in accordance with AS3798-2007.

Depth of fill values are calculated to the pre-development surface.

December 2023

**FLAGSTONE
 PRECINCT 1 STAGE 3Fii**
 For
**PEET FLAGSTONE
 CITY PTY LTD**

IMPORTANT NOTES:
 (These notes are an integral part of this plan)
 This plan has been prepared for PEET FLAGSTONE CITY PTY LTD for the purposes of a Disclosure Plan Under the Land Sales Act 1984 (as amended). It is not to be used by any other person or corporation or for any other purposes and is subject to the following limitations:

Please refer to the approved Development Application for conditions relating to the LOT and to approved Operational Works drawings for services location and possible easements.

THESE DESIGNS AND DRAWINGS ARE COPYRIGHT AND ARE NOT TO BE USED OR REPRODUCED WITHOUT THE WRITTEN PERMISSION OF VERIS

Data Sources
 Cadastral Boundaries:
 30109-LC-Master(DE) FS94 2014.dwg
 Final Surface Contours:
 FLAGSTONE - STAGE FGH - DISCLOSURE INFO - 16 11 2023 - Design Tin.dwg
 Depth of fill:
 FLAGSTONE - STAGE FGH - DISCLOSURE INFO - 16 11 2023 - Depth Contours.dwg
 Engineering design:
 23-0143_X_BASE_DESIGN_3F.dwg

Issue	Revisions	Date	Drawn
A	Original	22.12.23	RCS

Locality:
 Local Authority: Logan City Council
 Horizontal Meridian: MGA, Zone56
 Vertical Level Datum: AHD D
 Scale: 1:250@ A4
 Designed: Colliers
 Drawn: RCS 22/12/2023
 Checked: DE 22/12/2023
 Plot Date: 22 Dec, 2023
 Computer File Ref: 403109-S13Fii-DP-A.dwg

**DISCLOSURE PLAN
 of Proposed Lot 1409
 being part of
 Lot 910 on SP339534**



veris

BRISBANE WHITSUNDAYS
 (07) 3666 4700 (07) 4945 6600
 MACKAY CAIRNS
 (07) 4957 9700 (07) 4252 9400

veris.com.au
 ACN 615 735 727
 Veris Australia Pty Ltd

Drawing No 430109-DP-1409 Issue A

LEGEND

Final surface contours based on A.H.D. datum at an interval of 0.5m, shown as: — 1/5.5 —

Where applicable, areas to be filled are shown as:

Depth of fill, in metres, shown as:- + 0.5

Retaining wall and retaining wall height, shown on the lower side of the wall, have been calculated from digital data supplied by Colliers and shown as:

Bin Pad Location shown as: *