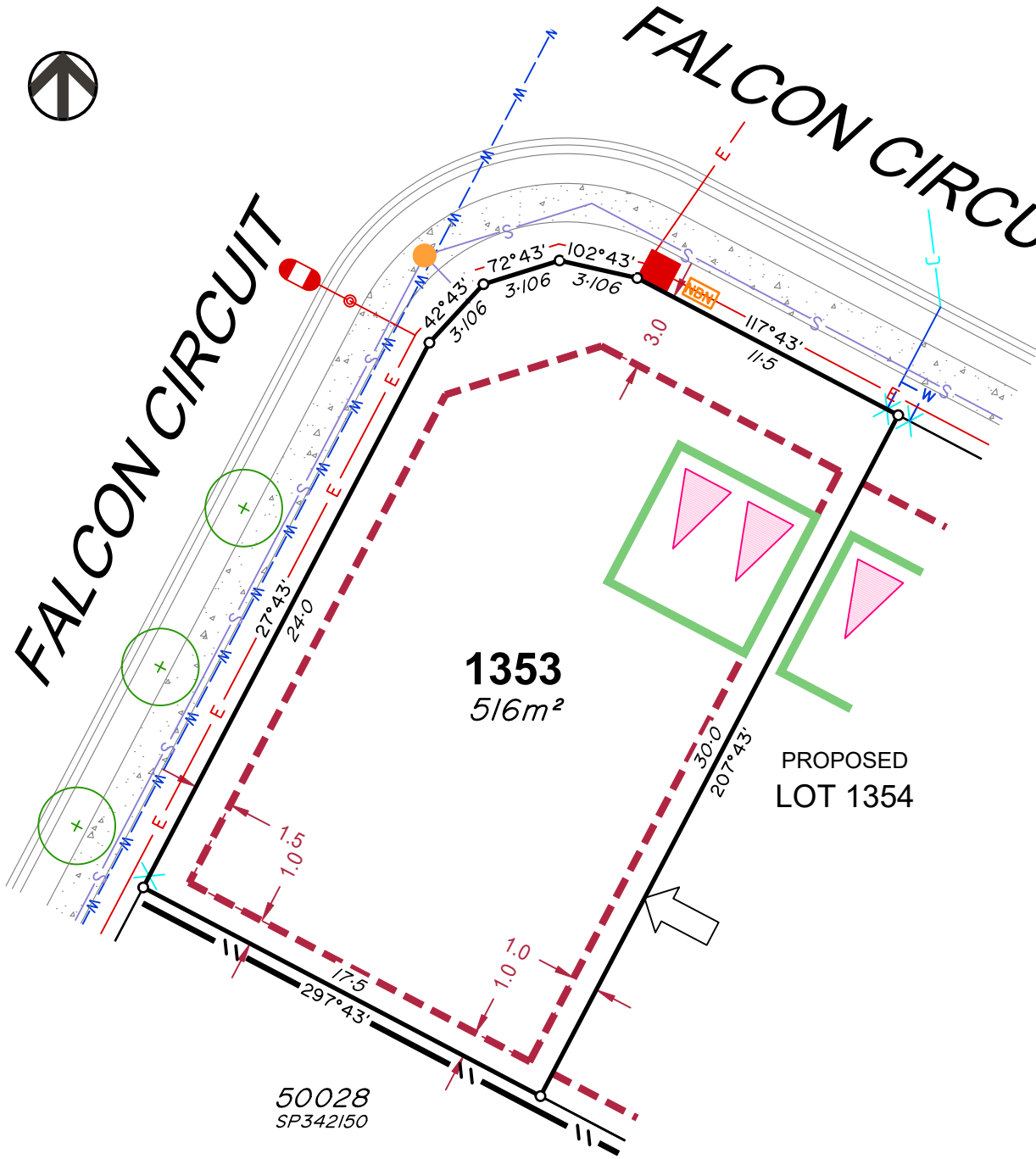




FALCON CIRCUIT

FALCON CIRCUIT



LEGEND

- Rock Retaining Wall shown as:-
- Sleeper Retaining Wall shown as:-
- Landscape Retaining Wall shown as:-
- Sewer line
- Sewer Manhole
- Roofwater Drainage line and Catch Pit
- Stormwater Drainage Line
- Stormwater Manhole
- Stormwater Pit
- Water Main
- Water Conduit
- Water Service Point of Entry
- Underground Electricity, Street Light, Electricity Pillar & NBN
- Developer Fencing
- Concrete Pathway
- Landscape Street Tree
- Zero Setback Building Line
- Indicative Building Envelope
- Proposed Services Easement
- Indicative Parking Access Location
- Bin Pads

ADDITIONAL NOTES:

Allotments used as Multiple Residential Allotments in accordance with the approved Plan of Development may have a reduced primary road setback to 3.0metres as noted on the Plan of Development Table.

Compaction of any fill material placed on this site shall be completed to level one inspection and testing services in accordance with AS3798-2007.

Location of sewer, roofwater, stormwater, water reticulation and electricity lines, manholes and pits are those shown on engineering design drawings, supplied by Colliers and may differ from the as-constructed location.

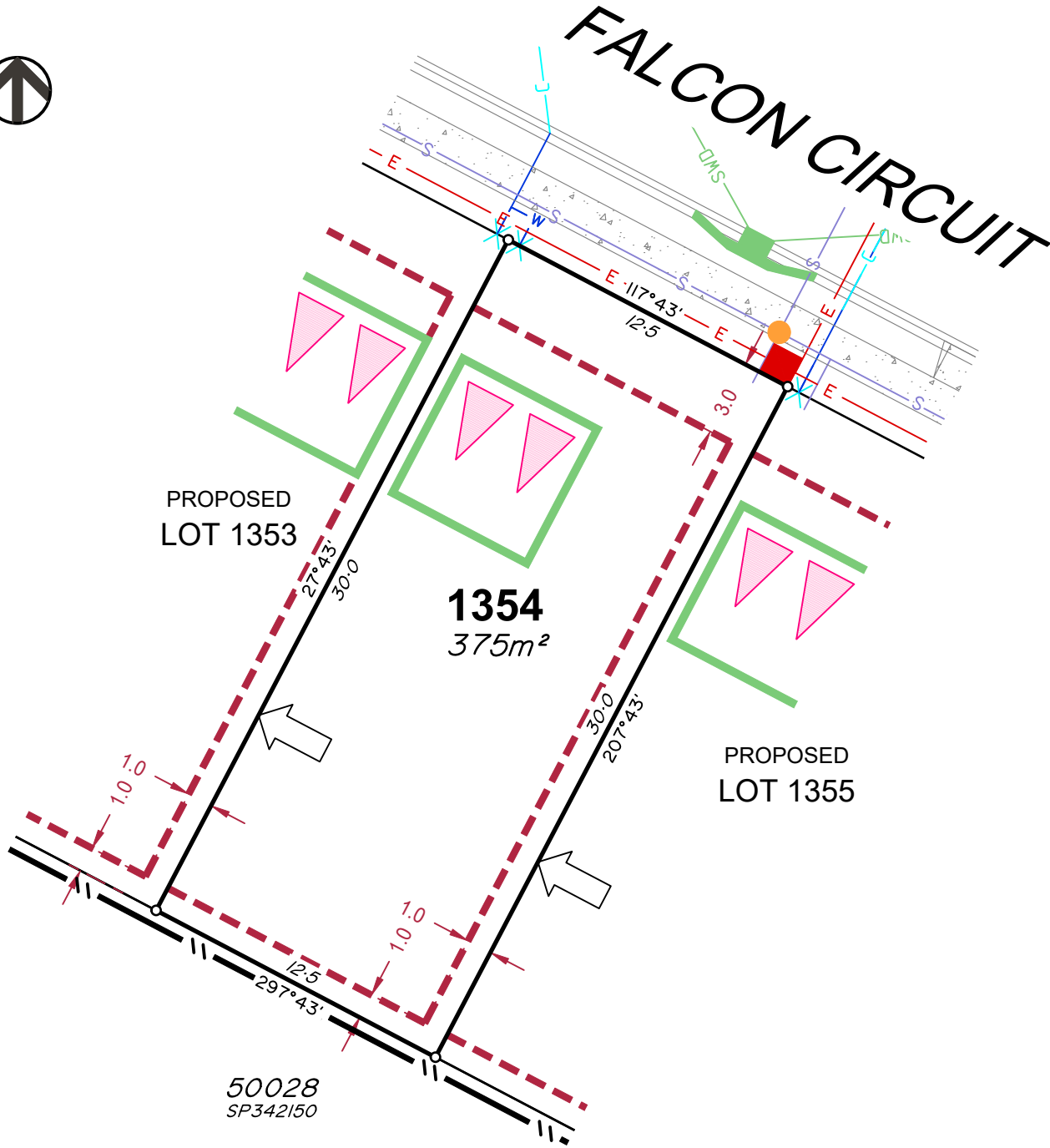
Plan of Development information Supplied by RPS Group PLC.

Copyright © Veris Australia Pty Ltd
January 2024.

Plot Date: 09 Jan, 2024
Computer File Ref: 403109-St3Fii-SP-A.dwg



FALCON CIRCUIT



PROPOSED LOT 1353

1354
375m²

PROPOSED LOT 1355

50028
SP342150

LEGEND

- Rock Retaining Wall shown as:-
- Sleeper Retaining Wall shown as:-
- Landscape Retaining Wall shown as:-
- Sewer line
- Sewer Manhole
- Roofwater Drainage line and Catch Pit
- Stormwater Drainage Line
- Stormwater Manhole
- Stormwater Pit
- Water Main
- Water Conduit
- Water Service Point of Entry
- Underground Electricity, Street Light, Electricity Pillar & NBN
- Developer Fencing
- Concrete Pathway
- Landscape Street Tree
- Zero Setback Building Line
- Indicative Building Envelope
- Proposed Services Easement
- Indicative Parking Access Location
- Bin Pads

ADDITIONAL NOTES:

Allotments used as Multiple Residential Allotments in accordance with the approved Plan of Development may have a reduced primary road setback to 3.0metres as noted on the Plan of Development Table.

Compaction of any fill material placed on this site shall be completed to level one inspection and testing services in accordance with AS3798-2007.

Location of sewer, roofwater, stormwater, water reticulation and electricity lines, manholes and pits are those shown on engineering design drawings, supplied by Colliers and may differ from the as-constructed location.

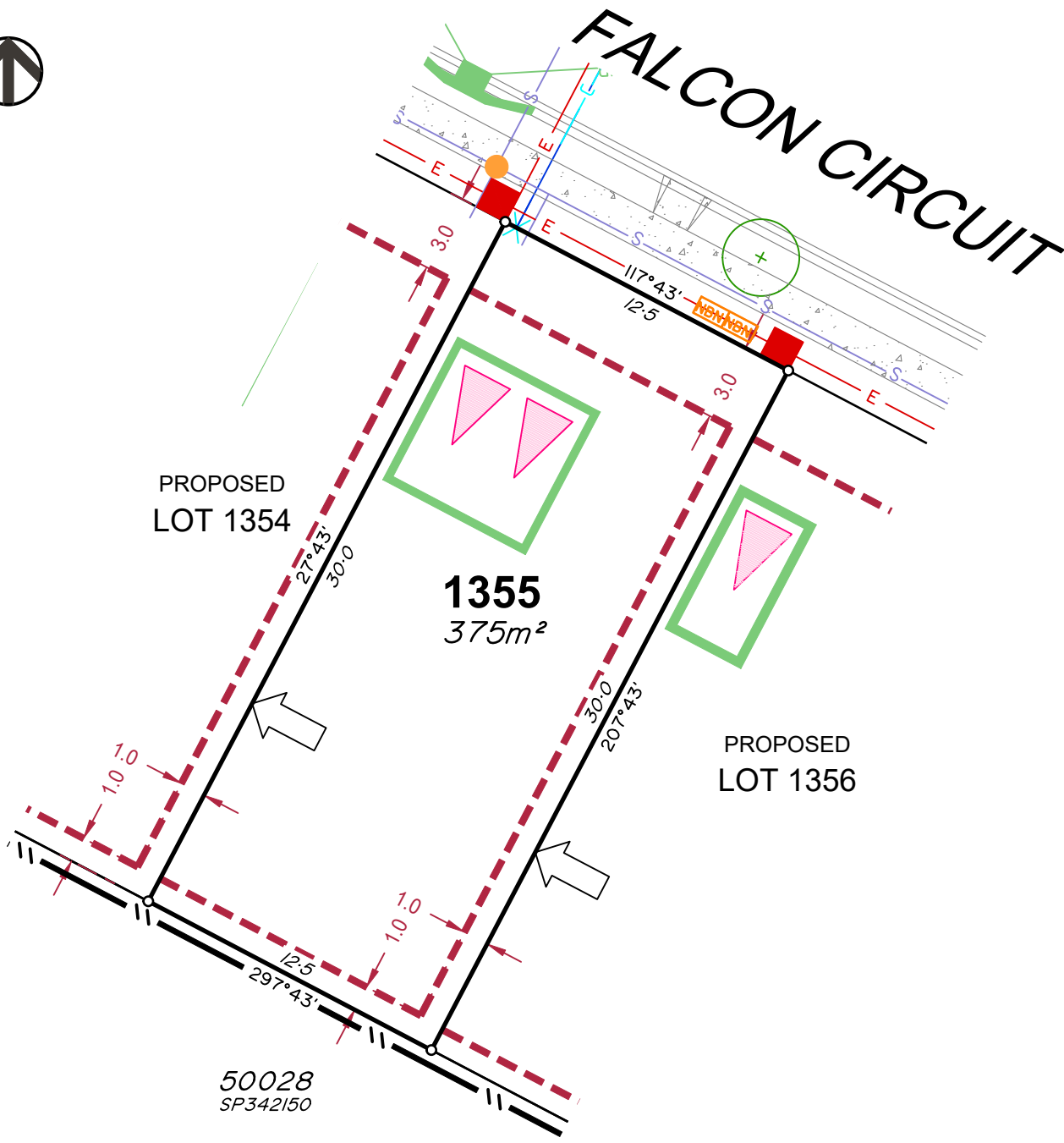
Plan of Development information Supplied by RPS Group PLC.

Copyright © Veris Australia Pty Ltd
January 2024.

Plot Date: 09 Jan, 2024
 Computer File Ref: 403109-St3Fii-SP-A.dwg



FALCON CIRCUIT



PROPOSED LOT 1354

1355
375m²

PROPOSED LOT 1356

50028
SP342150

LEGEND

- Rock Retaining Wall shown as:-
- Sleeper Retaining Wall shown as:-
- Landscape Retaining Wall shown as:-
- Sewer line
- Sewer Manhole
- Roofwater Drainage line and Catch Pit RWD
- Stormwater Drainage Line SWD
- Stormwater Manhole
- Stormwater Pit
- Water Main
- Water Conduit
- Water Service Point of Entry
- Underground Electricity, Street Light, Electricity Pillar & NBN NBN E
- Developer Fencing
- Concrete Pathway
- Landscape Street Tree
- Zero Setback Building Line
- Indicative Building Envelope
- Proposed Services Easement
- Indicative Parking Access Location
- Bin Pads

ADDITIONAL NOTES:

Allotments used as Multiple Residential Allotments in accordance with the approved Plan of Development may have a reduced primary road setback to 3.0metres as noted on the Plan of Development Table.

Compaction of any fill material placed on this site shall be completed to level one inspection and testing services in accordance with AS3798-2007.

Location of sewer, roofwater, stormwater, water reticulation and electricity lines, manholes and pits are those shown on engineering design drawings, supplied by Colliers and may differ from the as-constructed location.

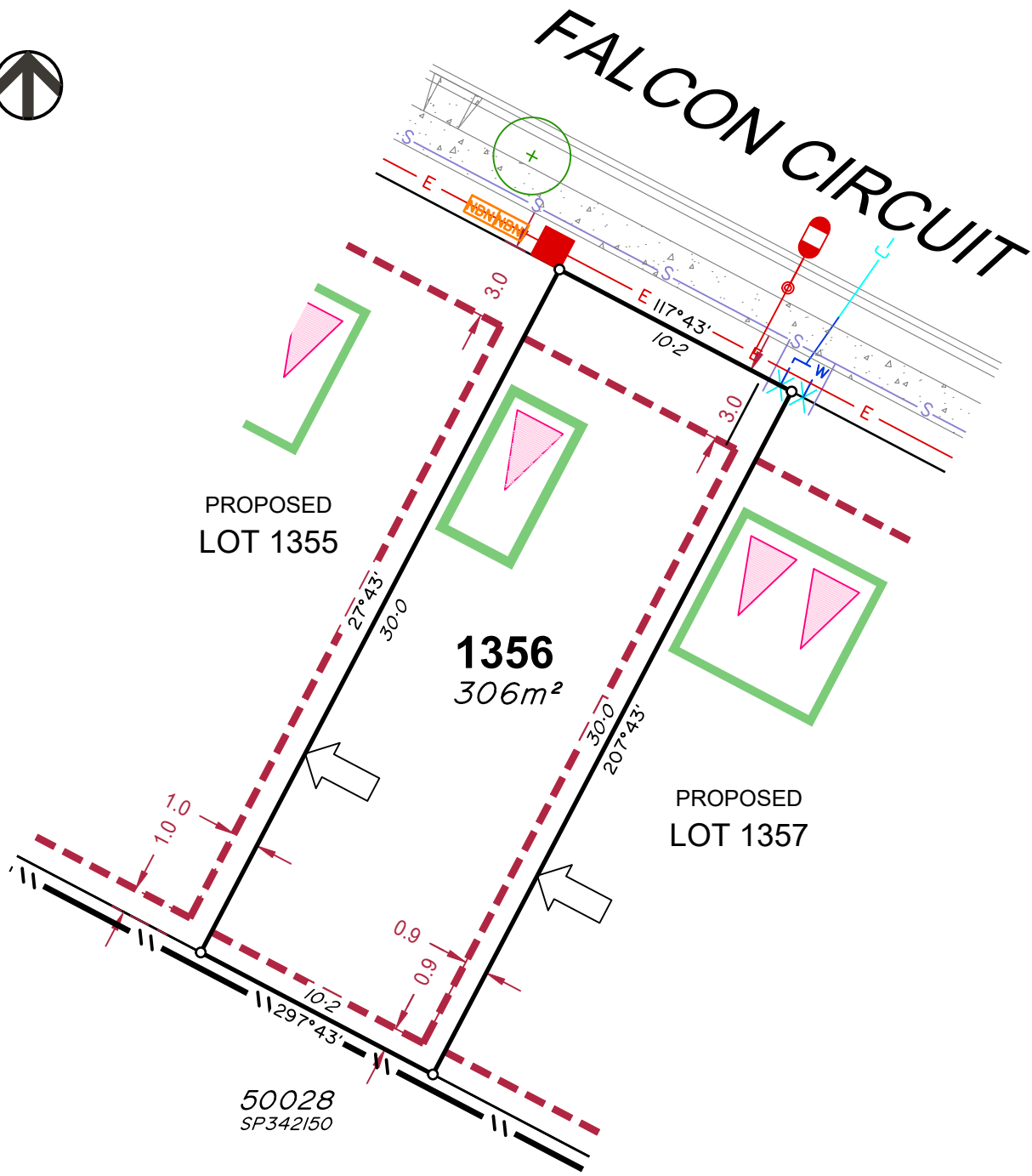
Plan of Development information Supplied by RPS Group PLC.

Copyright © Veris Australia Pty Ltd
January 2024.

Plot Date: 09 Jan, 2024
 Computer File Ref: 403109-St3Fii-SP-A.dwg



FALCON CIRCUIT



LEGEND

- Rock Retaining Wall shown as:-
- Sleeper Retaining Wall shown as:-
- Landscape Retaining Wall shown as:-
- Sewer line
- Sewer Manhole
- Roofwater Drainage line and Catch Pit
- Stormwater Drainage Line
- Stormwater Manhole
- Stormwater Pit
- Water Main
- Water Conduit
- Water Service Point of Entry
- Underground Electricity, Street Light, Electricity Pillar & NBN
- Developer Fencing
- Concrete Pathway
- Landscape Street Tree
- Zero Setback Building Line
- Indicative Building Envelope
- Proposed Services Easement
- Indicative Parking Access Location
- Bin Pads

ADDITIONAL NOTES:

Allotments used as Multiple Residential Allotments in accordance with the approved Plan of Development may have a reduced primary road setback to 3.0metres as noted on the Plan of Development Table.

Compaction of any fill material placed on this site shall be completed to level one inspection and testing services in accordance with AS3798-2007.

Location of sewer, roofwater, stormwater, water reticulation and electricity lines, manholes and pits are those shown on engineering design drawings, supplied by Colliers and may differ from the as-constructed location.

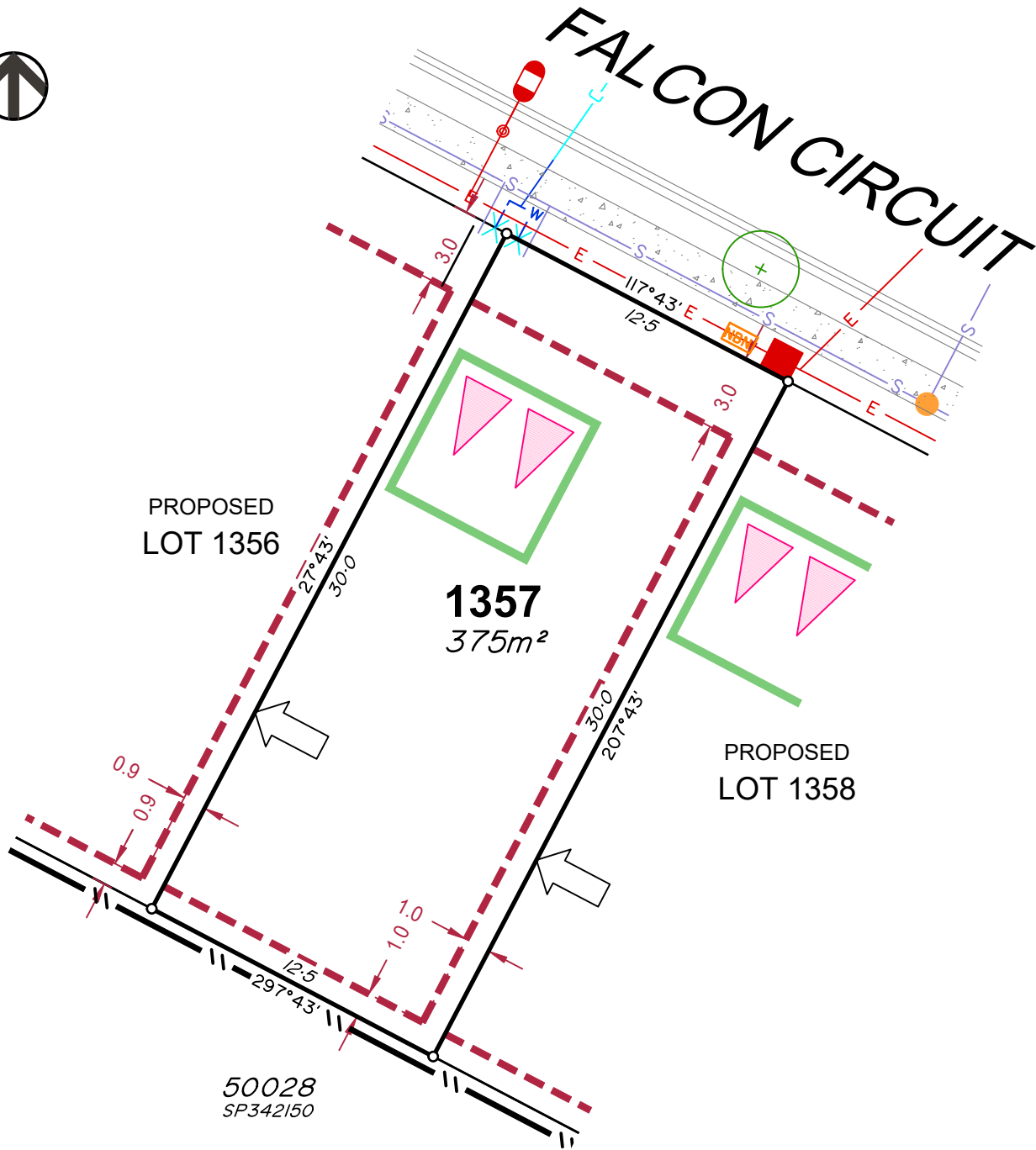
Plan of Development information Supplied by RPS Group PLC.

Copyright © Veris Australia Pty Ltd
January 2024.

Plot Date: 09 Jan, 2024
 Computer File Ref: 403109-St3Fii-SP-A.dwg



FALCON CIRCUIT



LEGEND

- Rock Retaining Wall shown as:-
- Sleeper Retaining Wall shown as:-
- Landscape Retaining Wall shown as:-
- Sewer line
- Sewer Manhole
- Roofwater Drainage line and Catch Pit
- Stormwater Drainage Line
- Stormwater Manhole
- Stormwater Pit
- Water Main
- Water Conduit
- Water Service Point of Entry
- Underground Electricity, Street Light, Electricity Pillar & NBN
- Developer Fencing
- Concrete Pathway
- Landscape Street Tree
- Zero Setback Building Line
- Indicative Building Envelope
- Proposed Services Easement
- Indicative Parking Access Location
- Bin Pads

ADDITIONAL NOTES:

Allotments used as Multiple Residential Allotments in accordance with the approved Plan of Development may have a reduced primary road setback to 3.0metres as noted on the Plan of Development Table.

Compaction of any fill material placed on this site shall be completed to level one inspection and testing services in accordance with AS3798-2007.

Location of sewer, roofwater, stormwater, water reticulation and electricity lines, manholes and pits are those shown on engineering design drawings, supplied by Colliers and may differ from the as-constructed location.

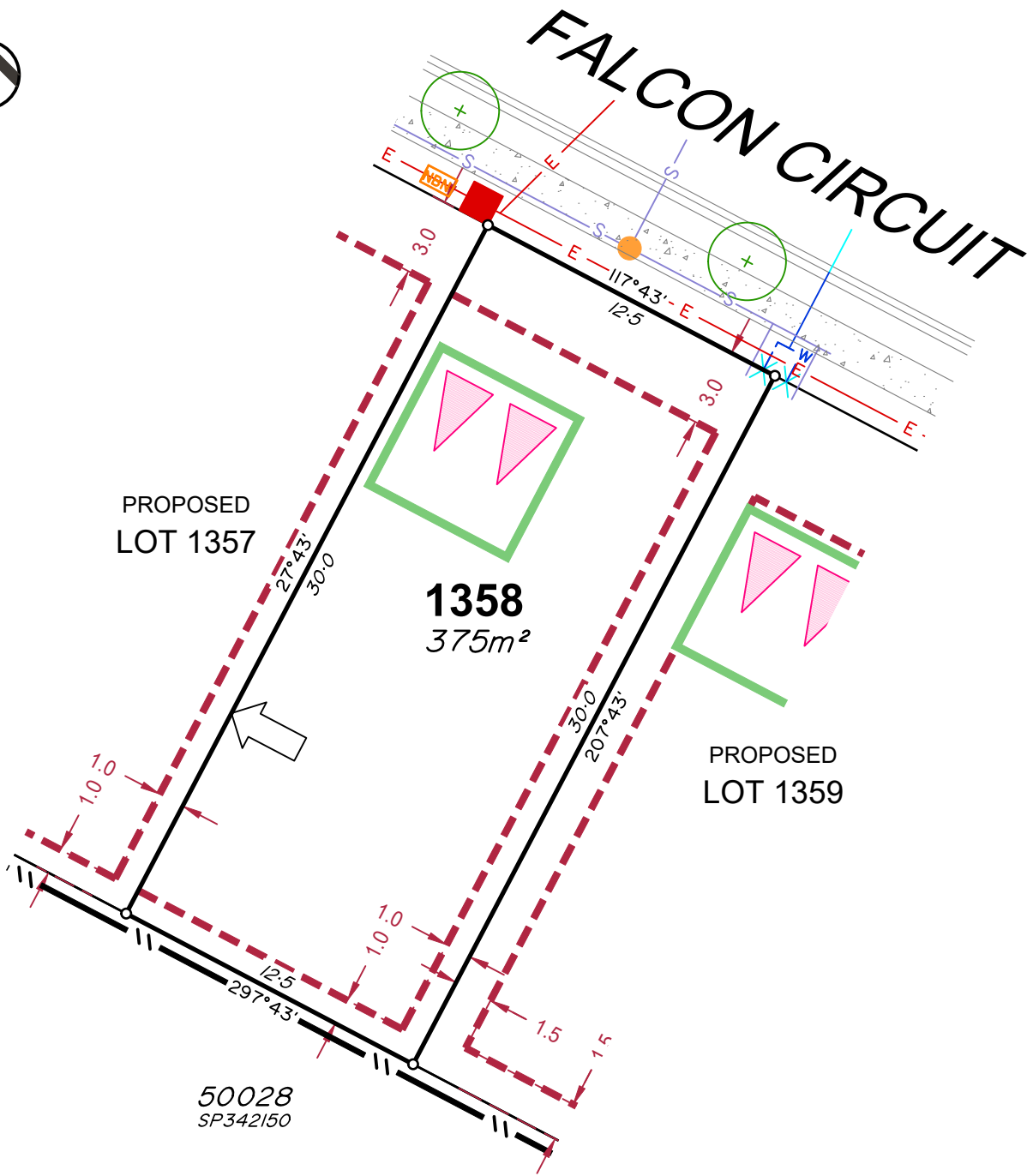
Plan of Development information Supplied by RPS Group PLC.

Copyright © Veris Australia Pty Ltd
January 2024.

Plot Date: 09 Jan, 2024
Computer File Ref: 403109-St3Fii-SP-A.dwg



FALCON CIRCUIT



LEGEND

Rock Retaining Wall shown as:-		
Sleeper Retaining Wall shown as:-		
Landscape Retaining Wall shown as:-		
Sewer line		
Sewer Manhole		
Roofwater Drainage line and Catch Pit		
Stormwater Drainage Line		
Stormwater Manhole		
Stormwater Pit		
Water Main		
Water Conduit		
Water Service Point of Entry		
Underground Electricity, Street Light, Electricity Pillar & NBN		
Developer Fencing		
Concrete Pathway		
Landscape Street Tree		
Zero Setback Building Line		
Indicative Building Envelope		
Proposed Services Easement		
Indicative Parking Access Location		
Bin Pads		

ADDITIONAL NOTES:

Allotments used as Multiple Residential Allotments in accordance with the approved Plan of Development may have a reduced primary road setback to 3.0metres as noted on the Plan of Development Table.

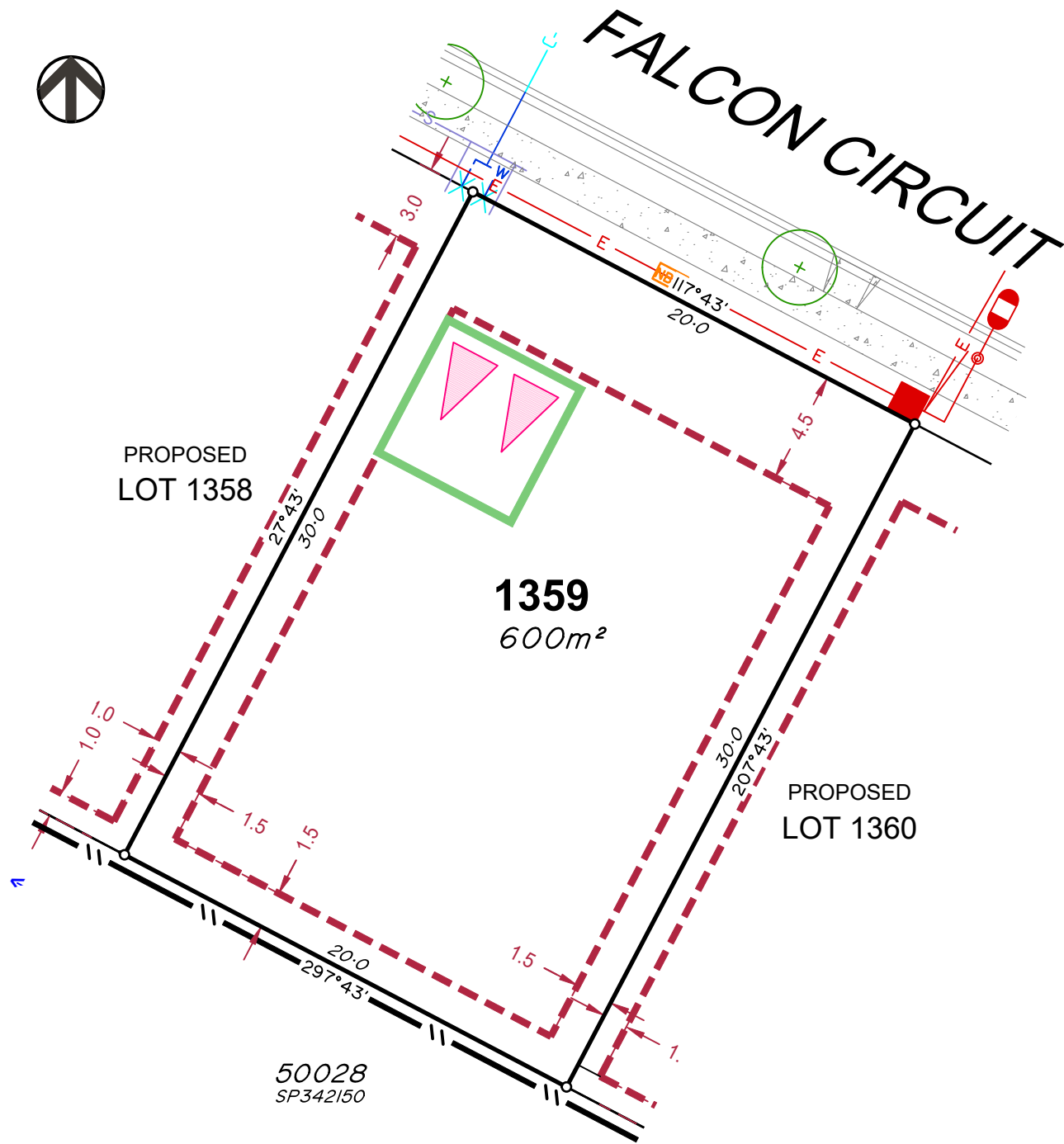
Compaction of any fill material placed on this site shall be completed to level one inspection and testing services in accordance with AS3798-2007.

Location of sewer, roofwater, stormwater, water reticulation and electricity lines, manholes and pits are those shown on engineering design drawings, supplied by Colliers and may differ from the as-constructed location.

Plan of Development information Supplied by RPS Group PLC.

Copyright © Veris Australia Pty Ltd
January 2024.

Plot Date: 09 Jan, 2024
Computer File Ref: 403109-St3Fii-SP-A.dwg



LEGEND

Rock Retaining Wall shown as:-	
Sleeper Retaining Wall shown as:-	
Landscape Retaining Wall shown as:-	
Sewer line	
Sewer Manhole	
Roofwater Drainage line and Catch Pit	
Stormwater Drainage Line	
Stormwater Manhole	
Stormwater Pit	
Water Main	
Water Conduit	
Water Service Point of Entry	
Underground Electricity, Street Light, Electricity Pillar & NBN	
Developer Fencing	
Concrete Pathway	
Landscape Street Tree	
Zero Setback Building Line	
Indicative Building Envelope	
Proposed Services Easement	
Indicative Parking Access Location	
Bin Pads	

ADDITIONAL NOTES:

Allotments used as Multiple Residential Allotments in accordance with the approved Plan of Development may have a reduced primary road setback to 3.0metres as noted on the Plan of Development Table.

Compaction of any fill material placed on this site shall be completed to level one inspection and testing services in accordance with AS3798-2007.

Location of sewer, roofwater, stormwater, water reticulation and electricity lines, manholes and pits are those shown on engineering design drawings, supplied by Colliers and may differ from the as-constructed location.

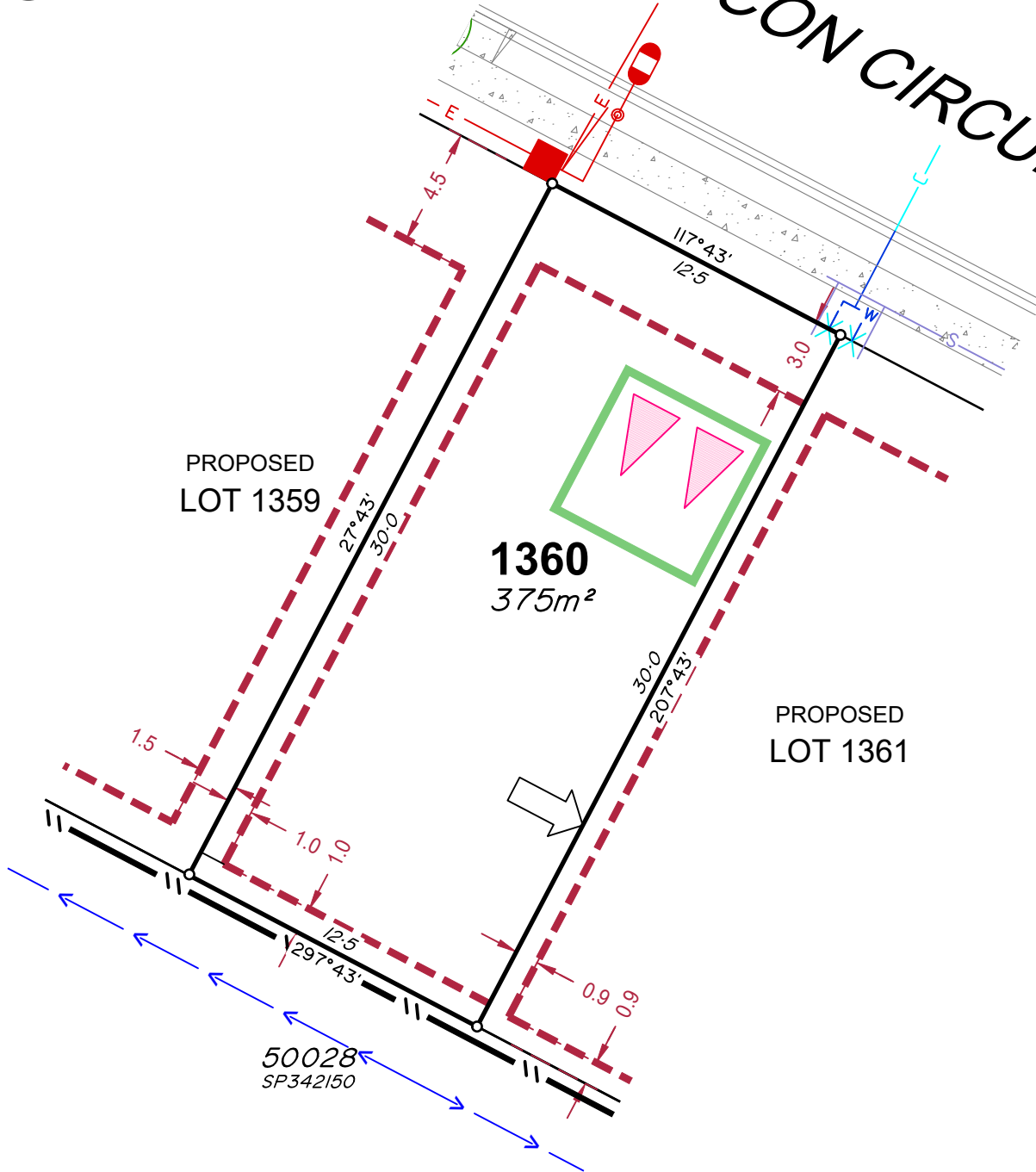
Plan of Development information Supplied by RPS Group PLC.

Copyright © Veris Australia Pty Ltd
January 2024.

Plot Date: 09 Jan, 2024
Computer File Ref: 403109-St3Fii-SP-A.dwg



FALCON CIRCUIT



PROPOSED LOT 1359

1360
375m²

PROPOSED LOT 1361

50028
SP342150

LEGEND

- Rock Retaining Wall shown as:-
- Sleeper Retaining Wall shown as:-
- Landscape Retaining Wall shown as:-
- Sewer line
- Sewer Manhole
- Roofwater Drainage line and Catch Pit
- Stormwater Drainage Line
- Stormwater Manhole
- Stormwater Pit
- Water Main
- Water Conduit
- Water Service Point of Entry
- Underground Electricity, Street Light, Electricity Pillar & NBN
- Developer Fencing
- Concrete Pathway
- Landscape Street Tree
- Zero Setback Building Line
- Indicative Building Envelope
- Proposed Services Easement
- Indicative Parking Access Location
- Bin Pads

ADDITIONAL NOTES:

Allotments used as Multiple Residential Allotments in accordance with the approved Plan of Development may have a reduced primary road setback to 3.0metres as noted on the Plan of Development Table.

Compaction of any fill material placed on this site shall be completed to level one inspection and testing services in accordance with AS3798-2007.

Location of sewer, roofwater, stormwater, water reticulation and electricity lines, manholes and pits are those shown on engineering design drawings, supplied by Colliers and may differ from the as-constructed location.

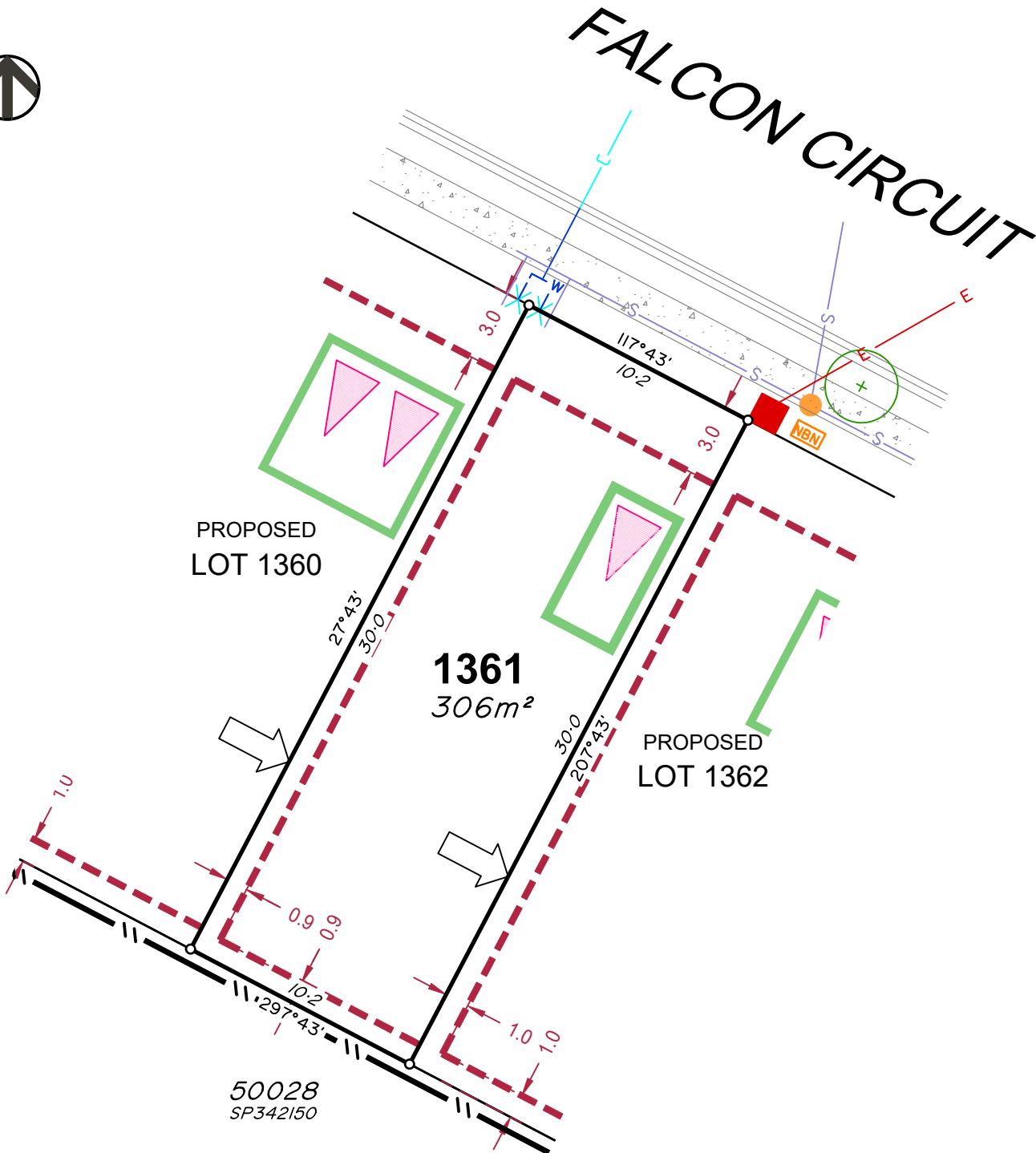
Plan of Development information Supplied by RPS Group PLC.

Copyright © Veris Australia Pty Ltd
January 2024.

Plot Date: 09 Jan, 2024
Computer File Ref: 403109-St3Fii-SP-A.dwg



FALCON CIRCUIT



LEGEND

- Rock Retaining Wall shown as:-
- Sleeper Retaining Wall shown as:-
- Landscape Retaining Wall shown as:-
- Sewer line
- Sewer Manhole
- Roofwater Drainage line and Catch Pit
- Stormwater Drainage Line
- Stormwater Manhole
- Stormwater Pit
- Water Main
- Water Conduit
- Water Service Point of Entry
- Underground Electricity, Street Light, Electricity Pillar & NBN
- Developer Fencing
- Concrete Pathway
- Landscape Street Tree
- Zero Setback Building Line
- Indicative Building Envelope
- Proposed Services Easement
- Indicative Parking Access Location
- Bin Pads ✳

ADDITIONAL NOTES:

Allotments used as Multiple Residential Allotments in accordance with the approved Plan of Development may have a reduced primary road setback to 3.0metres as noted on the Plan of Development Table.

Compaction of any fill material placed on this site shall be completed to level one inspection and testing services in accordance with AS3798-2007.

Location of sewer, roofwater, stormwater, water reticulation and electricity lines, manholes and pits are those shown on engineering design drawings, supplied by Colliers and may differ from the as-constructed location.

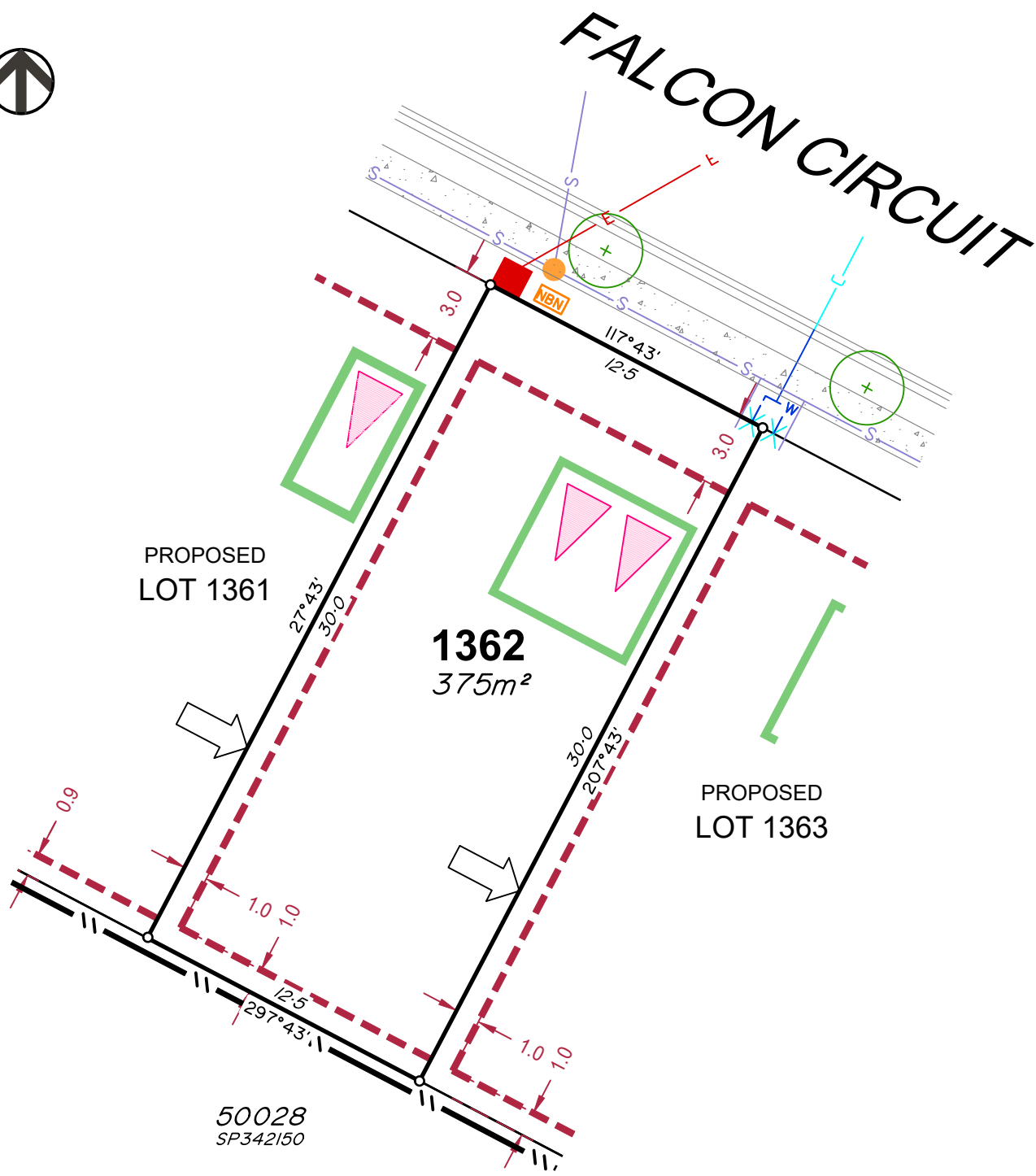
Plan of Development information Supplied by RPS Group PLC.

Copyright © Veris Australia Pty Ltd
January 2024.

Plot Date: 09 Jan, 2024
Computer File Ref: 403109-St3Fii-SP-A.dwg



FALCON CIRCUIT



LEGEND

- Rock Retaining Wall shown as:-
- Sleeper Retaining Wall shown as:-
- Landscape Retaining Wall shown as:-
- Sewer line
- Sewer Manhole
- Roofwater Drainage line and Catch Pit
- Stormwater Drainage Line
- Stormwater Manhole
- Stormwater Pit
- Water Main
- Water Conduit
- Water Service Point of Entry
- Underground Electricity, Street Light, Electricity Pillar & NBN
- Developer Fencing
- Concrete Pathway
- Landscape Street Tree
- Zero Setback Building Line
- Indicative Building Envelope
- Proposed Services Easement
- Indicative Parking Access Location
- Bin Pads

ADDITIONAL NOTES:

Allotments used as Multiple Residential Allotments in accordance with the approved Plan of Development may have a reduced primary road setback to 3.0metres as noted on the Plan of Development Table.

Compaction of any fill material placed on this site shall be completed to level one inspection and testing services in accordance with AS3798-2007.

Location of sewer, roofwater, stormwater, water reticulation and electricity lines, manholes and pits are those shown on engineering design drawings, supplied by Colliers and may differ from the as-constructed location.

Plan of Development information Supplied by RPS Group PLC.

Copyright © Veris Australia Pty Ltd
January 2024.

Plot Date: 09 Jan, 2024
Computer File Ref: 403109-St3Fii-SP-A.dwg



FALCON CIRCUIT

PROPOSED LOT 1362

1363
375m²

PROPOSED LOT 1364

50028
SP342150

LEGEND

Rock Retaining Wall shown as:-	
Sleeper Retaining Wall shown as:-	
Landscape Retaining Wall shown as:-	
Sewer line	
Sewer Manhole	
Roofwater Drainage line and Catch Pit	
Stormwater Drainage Line	
Stormwater Manhole	
Stormwater Pit	
Water Main	
Water Conduit	
Water Service Point of Entry	
Underground Electricity, Street Light, Electricity Pillar & NBN	
Developer Fencing	
Concrete Pathway	
Landscape Street Tree	
Zero Setback Building Line	
Indicative Building Envelope	
Proposed Services Easement	
Indicative Parking Access Location	
Bin Pads	

ADDITIONAL NOTES:

Allotments used as Multiple Residential Allotments in accordance with the approved Plan of Development may have a reduced primary road setback to 3.0metres as noted on the Plan of Development Table.

Compaction of any fill material placed on this site shall be completed to level one inspection and testing services in accordance with AS3798-2007.

Location of sewer, roofwater, stormwater, water reticulation and electricity lines, manholes and pits are those shown on engineering design drawings, supplied by Colliers and may differ from the as-constructed location.

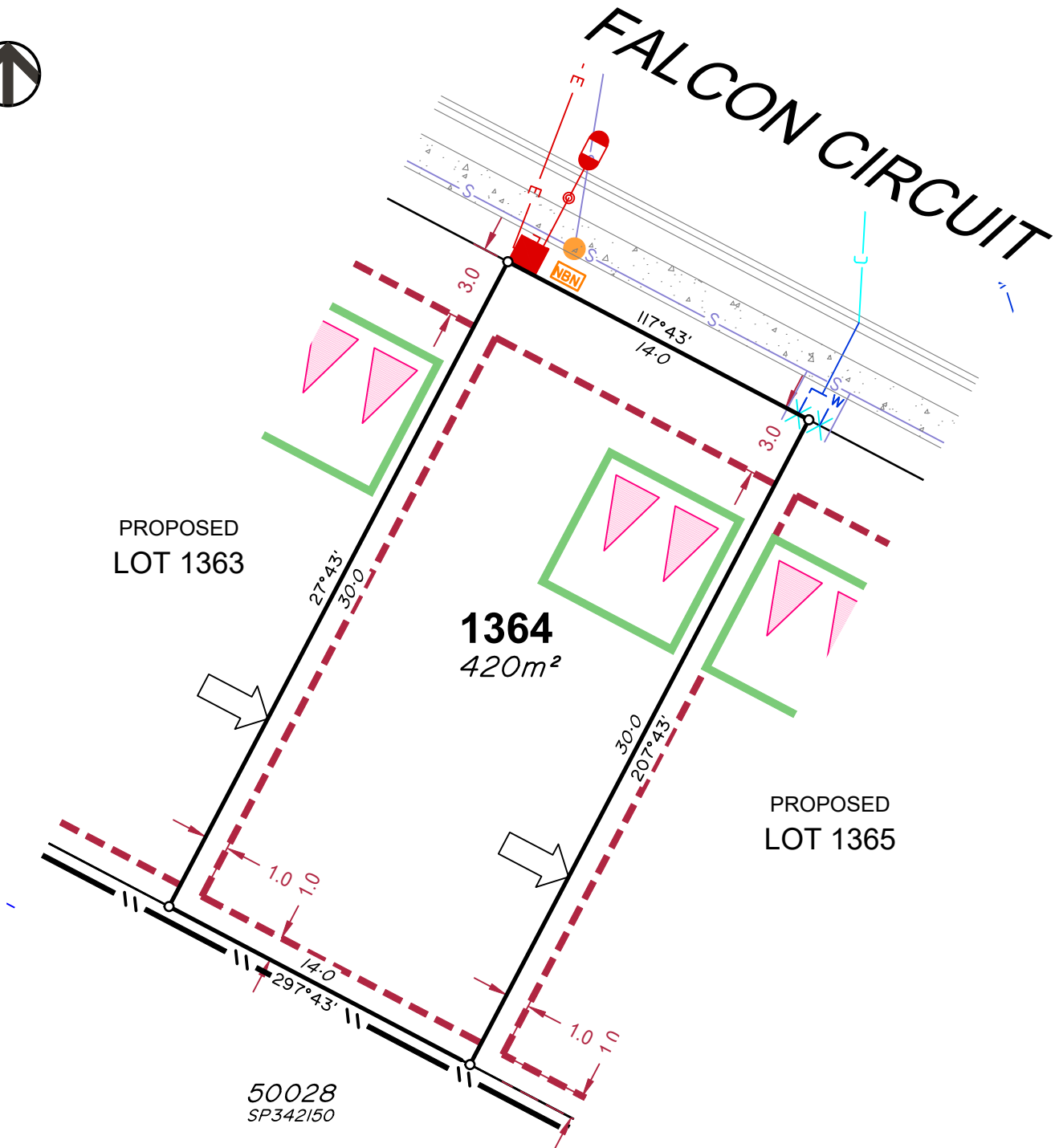
Plan of Development information Supplied by RPS Group PLC.

Copyright © Veris Australia Pty Ltd
January 2024.

Plot Date: 09 Jan, 2024
Computer File Ref: 403109-St3Fii-SP-A.dwg



FALCON CIRCUIT



LEGEND

- Rock Retaining Wall shown as:-
- Sleeper Retaining Wall shown as:-
- Landscape Retaining Wall shown as:-
- Sewer line
- Sewer Manhole
- Roofwater Drainage line and Catch Pit
- Stormwater Drainage Line
- Stormwater Manhole
- Stormwater Pit
- Water Main
- Water Conduit
- Water Service Point of Entry
- Underground Electricity, Street Light, Electricity Pillar & NBN
- Developer Fencing
- Concrete Pathway
- Landscape Street Tree
- Zero Setback Building Line
- Indicative Building Envelope
- Proposed Services Easement
- Indicative Parking Access Location
- Bin Pads

ADDITIONAL NOTES:

Allotments used as Multiple Residential Allotments in accordance with the approved Plan of Development may have a reduced primary road setback to 3.0metres as noted on the Plan of Development Table.

Compaction of any fill material placed on this site shall be completed to level one inspection and testing services in accordance with AS3798-2007.

Location of sewer, roofwater, stormwater, water reticulation and electricity lines, manholes and pits are those shown on engineering design drawings, supplied by Colliers and may differ from the as-constructed location.

Plan of Development information Supplied by RPS Group PLC.

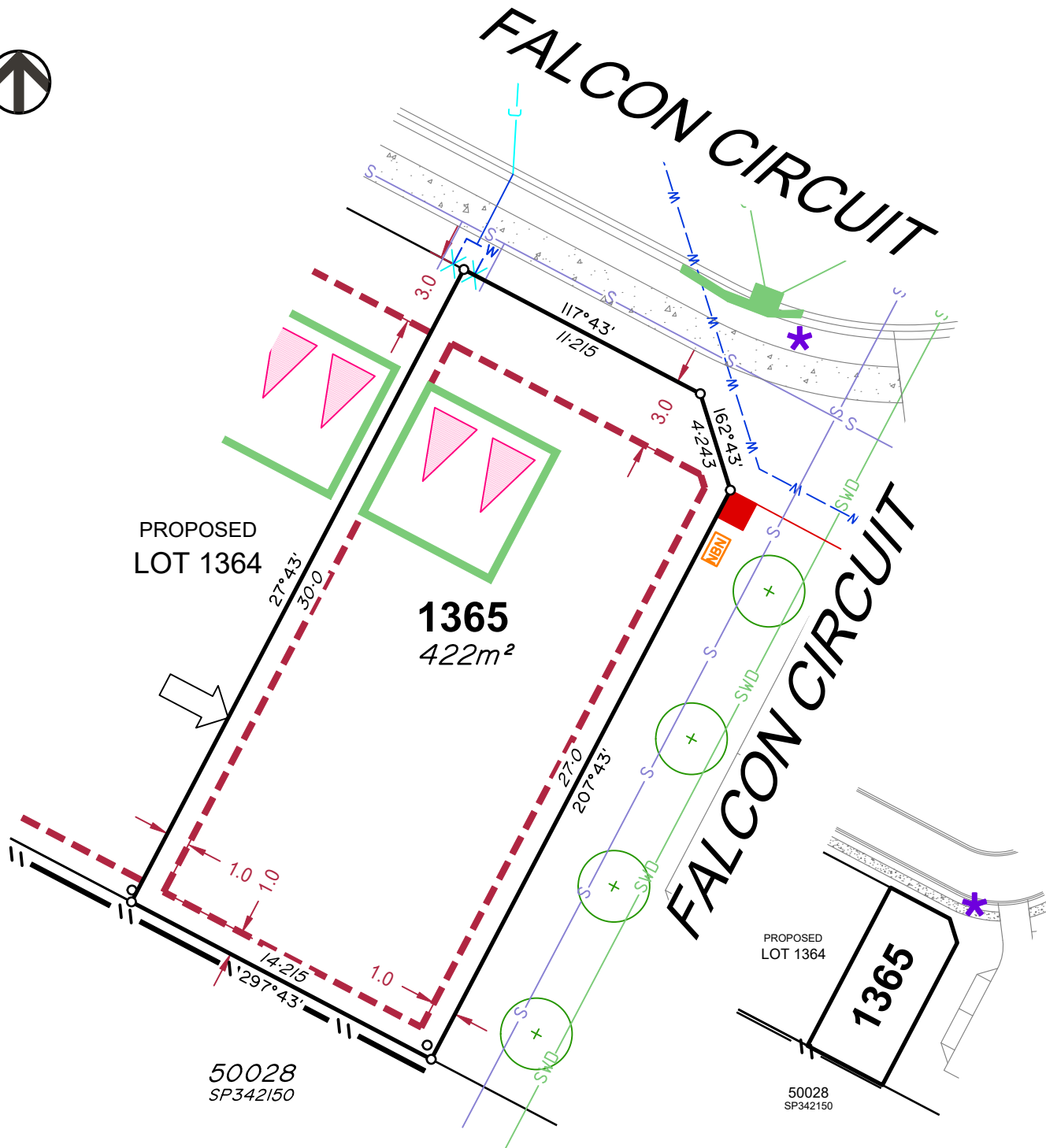
Copyright © Veris Australia Pty Ltd
January 2024.

Plot Date: 09 Jan, 2024
Computer File Ref: 403109-St3Fii-SP-A.dwg



FALCON CIRCUIT

FALCON CIRCUIT



LEGEND

- Rock Retaining Wall shown as:-
- Sleeper Retaining Wall shown as:-
- Landscape Retaining Wall shown as:-
- Sewer line
- Sewer Manhole
- Roofwater Drainage line and Catch Pit
- Stormwater Drainage Line
- Stormwater Manhole
- Stormwater Pit
- Water Main
- Water Conduit
- Water Service Point of Entry
- Underground Electricity, Street Light, Electricity Pillar & NBN
- Developer Fencing
- Concrete Pathway
- Landscape Street Tree
- Zero Setback Building Line
- Indicative Building Envelope
- Proposed Services Easement
- Indicative Parking Access Location
- Bin Pads

ADDITIONAL NOTES:

Allotments used as Multiple Residential Allotments in accordance with the approved Plan of Development may have a reduced primary road setback to 3.0metres as noted on the Plan of Development Table.

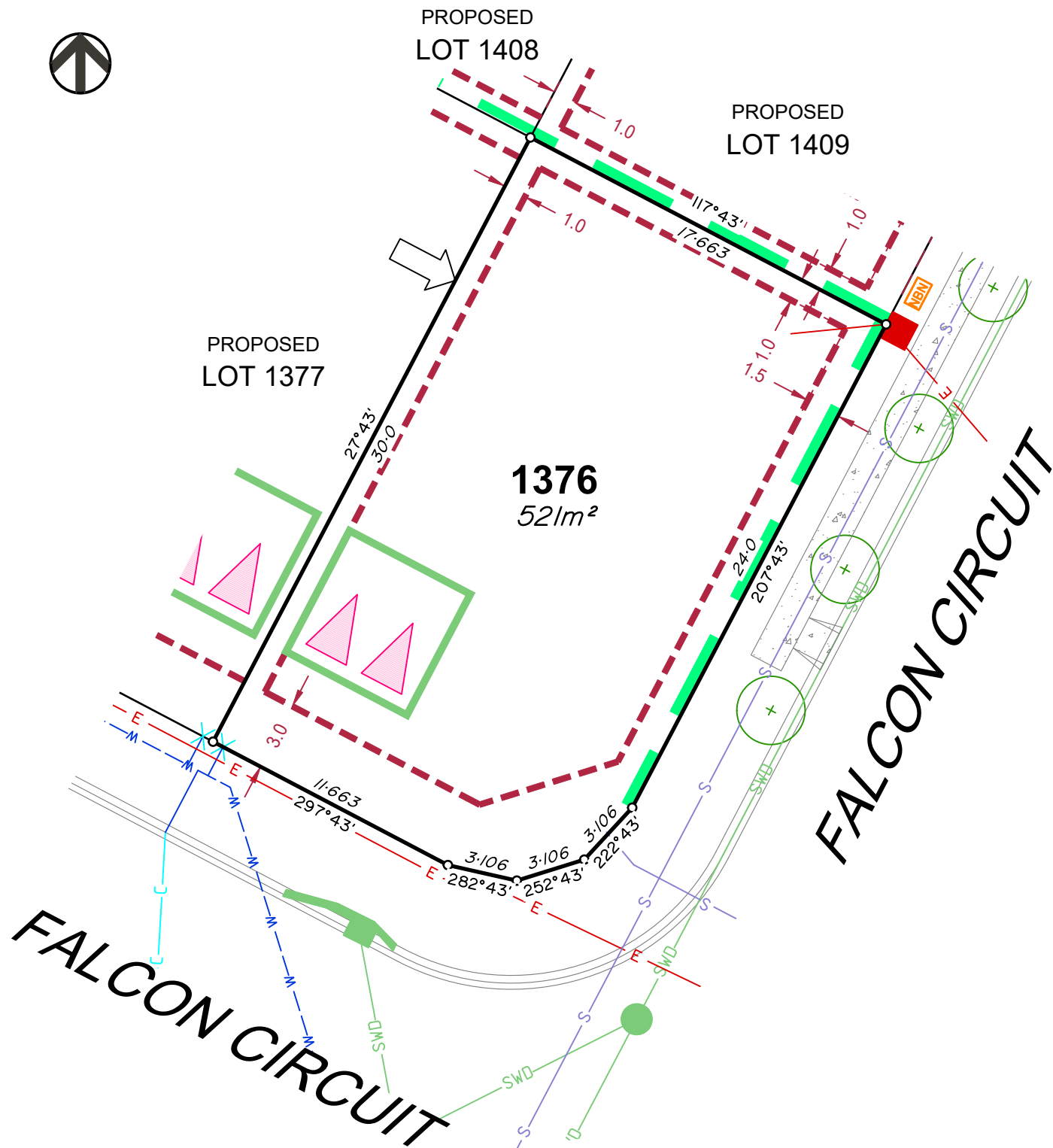
Compaction of any fill material placed on this site shall be completed to level one inspection and testing services in accordance with AS3798-2007.

Location of sewer, roofwater, stormwater, water reticulation and electricity lines, manholes and pits are those shown on engineering design drawings, supplied by Colliers and may differ from the as-constructed location.

Plan of Development information Supplied by RPS Group PLC.

Copyright © Veris Australia Pty Ltd
January 2024.

Plot Date: 09 Jan, 2024
Computer File Ref: 403109-St3Fii-SP-A.dwg



LEGEND

Rock Retaining Wall shown as:-		
Sleeper Retaining Wall shown as:-		
Landscape Retaining Wall shown as:-		
Sewer line		
Sewer Manhole		
Roofwater Drainage line and Catch Pit		
Stormwater Drainage Line		
Stormwater Manhole		
Stormwater Pit		
Water Main		
Water Conduit		
Water Service Point of Entry		
Underground Electricity, Street Light, Electricity Pillar & NBN		
Developer Fencing		
Concrete Pathway		
Zero Setback Building Line		
Proposed Services Easement		
Indicative Parking Access Location		
Bin Pads		

ADDITIONAL NOTES:

Allotments used as Multiple Residential Allotments in accordance with the approved Plan of Development may have a reduced primary road setback to 3.0metres as noted on the Plan of Development Table.

Compaction of any fill material placed on this site shall be completed to level one inspection and testing services in accordance with AS3798-2007.

Location of sewer, roofwater, stormwater, water reticulation and electricity lines, manholes and pits are those shown on engineering design drawings, supplied by Colliers and may differ from the as-constructed location.

Plan of Development information Supplied by RPS Group PLC.

Copyright © Veris Australia Pty Ltd
January 2024.

Plot Date: 09 Jan, 2024
Computer File Ref: 403109-St3Fii-SP-A.dwg



PROPOSED LOT 1407

PROPOSED LOT 1408

PROPOSED LOT 1409

PROPOSED LOT 1378

1377
375m²

PROPOSED LOT 1376

FALCON CIRCUIT

LEGEND

- Rock Retaining Wall shown as:-
- Sleeper Retaining Wall shown as:-
- Landscape Retaining Wall shown as:-
- Sewer line
- Sewer Manhole
- Roofwater Drainage line and Catch Pit
- Stormwater Drainage Line
- Stormwater Manhole
- Stormwater Pit
- Water Main
- Water Conduit
- Water Service Point of Entry
- Underground Electricity, Street Light, Electricity Pillar & NBN
- Developer Fencing
- Concrete Pathway
- Landscape Street Tree
- Zero Setback Building Line
- Indicative Building Envelope
- Proposed Services Easement
- Indicative Parking Access Location
- Bin Pads

ADDITIONAL NOTES:

Allotments used as Multiple Residential Allotments in accordance with the approved Plan of Development may have a reduced primary road setback to 3.0metres as noted on the Plan of Development Table.

Compaction of any fill material placed on this site shall be completed to level one inspection and testing services in accordance with AS3798-2007.

Location of sewer, roofwater, stormwater, water reticulation and electricity lines, manholes and pits are those shown on engineering design drawings, supplied by Colliers and may differ from the as-constructed location.

Plan of Development information Supplied by RPS Group PLC.

Copyright © Veris Australia Pty Ltd
January 2024.

Plot Date: 09 Jan, 2024
Computer File Ref: 403109-St3Fii-SP-A.dwg



PROPOSED
LOT 1406

PROPOSED
LOT 1407

PROPOSED
LOT 1408

PROPOSED
LOT 1379

1378
375m²

PROPOSED
LOT 1377

FALCON CIRCUIT

LEGEND

Rock Retaining Wall shown as:-		
Sleeper Retaining Wall shown as:-		
Landscape Retaining Wall shown as:-		
Sewer line		
Sewer Manhole		
Roofwater Drainage line and Catch Pit		
Stormwater Drainage Line		
Stormwater Manhole		
Stormwater Pit		
Water Main		
Water Conduit		
Water Service Point of Entry		
Underground Electricity, Street Light, Electricity Pillar & NBN		
Developer Fencing		
Concrete Pathway		
Landscape Street Tree		
Zero Setback Building Line		
Indicative Building Envelope		
Proposed Services Easement		
Indicative Parking Access Location		
Bin Pads		

ADDITIONAL NOTES:

Allotments used as Multiple Residential Allotments in accordance with the approved Plan of Development may have a reduced primary road setback to 3.0metres as noted on the Plan of Development Table.

Compaction of any fill material placed on this site shall be completed to level one inspection and testing services in accordance with AS3798-2007.

Location of sewer, roofwater, stormwater, water reticulation and electricity lines, manholes and pits are those shown on engineering design drawings, supplied by Colliers and may differ from the as-constructed location.

Plan of Development information Supplied by RPS Group PLC.

Copyright © Veris Australia Pty Ltd
January 2024.

Plot Date: 09 Jan, 2024
Computer File Ref: 403109-St3Fii-SP-A.dwg



PROPOSED LOT 1405

PROPOSED LOT 1406

PROPOSED LOT 1407

PROPOSED LOT 1380

1379
375m²

PROPOSED LOT 1378

FALCON CIRCUIT

LEGEND

Rock Retaining Wall shown as:-		
Sleeper Retaining Wall shown as:-		
Landscape Retaining Wall shown as:-		
Sewer line		
Sewer Manhole		
Roofwater Drainage line and Catch Pit		
Stormwater Drainage Line		
Stormwater Manhole		
Stormwater Pit		
Water Main		
Water Conduit		
Water Service Point of Entry		
Underground Electricity, Street Light, Electricity Pillar & NBN		
Developer Fencing		
Concrete Pathway		
Landscape Street Tree		
Zero Setback Building Line		
Indicative Building Envelope		
Proposed Services Easement		
Indicative Parking Access Location		
Bin Pads		

ADDITIONAL NOTES:

Allotments used as Multiple Residential Allotments in accordance with the approved Plan of Development may have a reduced primary road setback to 3.0metres as noted on the Plan of Development Table.

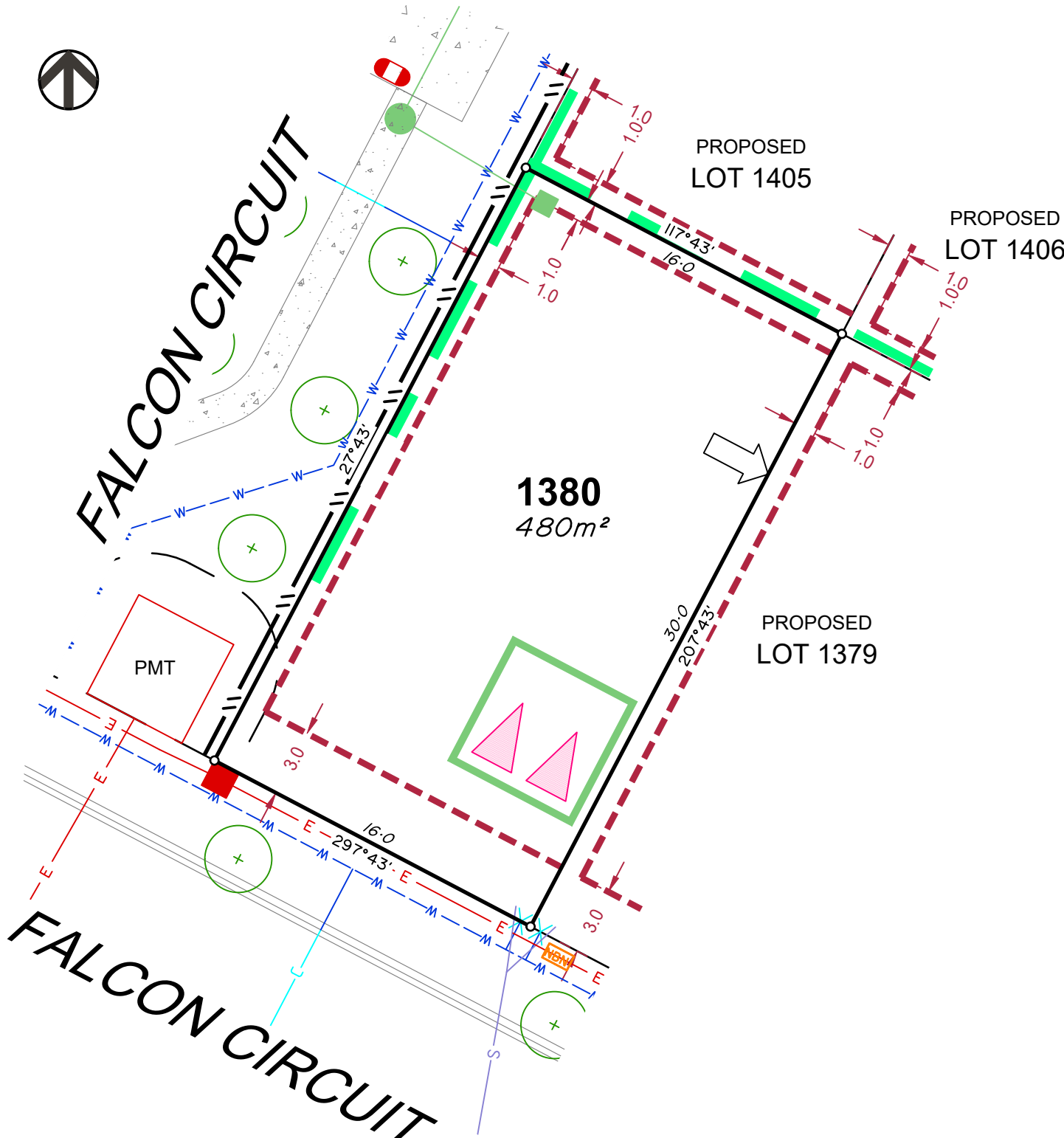
Compaction of any fill material placed on this site shall be completed to level one inspection and testing services in accordance with AS3798-2007.

Location of sewer, roofwater, stormwater, water reticulation and electricity lines, manholes and pits are those shown on engineering design drawings, supplied by Colliers and may differ from the as-constructed location.

Plan of Development information Supplied by RPS Group PLC.

Copyright © Veris Australia Pty Ltd
January 2024.

Plot Date: 09 Jan, 2024
Computer File Ref: 403109-St3Fii-SP-A.dwg



LEGEND

- Rock Retaining Wall shown as:-
- Sleeper Retaining Wall shown as:-
- Landscape Retaining Wall shown as:-
- Sewer line
- Sewer Manhole
- Roofwater Drainage line and Catch Pit
- Stormwater Drainage Line
- Stormwater Manhole
- Stormwater Pit
- Water Main
- Water Conduit
- Water Service Point of Entry
- Underground Electricity, Street Light, Electricity Pillar & NBN
- Developer Fencing
- Concrete Pathway
- Landscape Street Tree
- Zero Setback Building Line
- Indicative Building Envelope
- Proposed Services Easement
- Indicative Parking Access Location
- Bin Pads

ADDITIONAL NOTES:

Allotments used as Multiple Residential Allotments in accordance with the approved Plan of Development may have a reduced primary road setback to 3.0metres as noted on the Plan of Development Table.

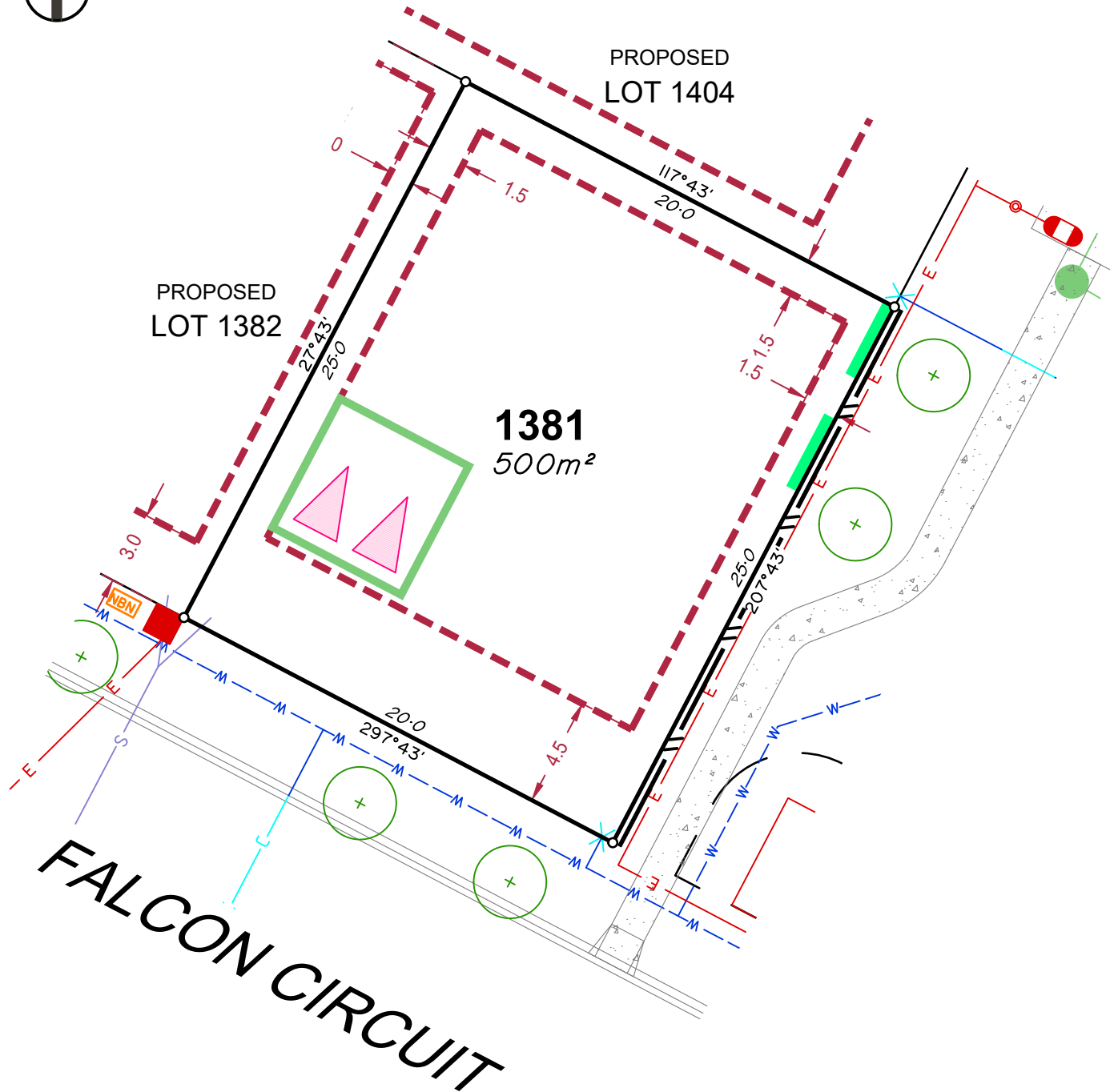
Compaction of any fill material placed on this site shall be completed to level one inspection and testing services in accordance with AS3798-2007.

Location of sewer, roofwater, stormwater, water reticulation and electricity lines, manholes and pits are those shown on engineering design drawings, supplied by Colliers and may differ from the as-constructed location.

Plan of Development information Supplied by RPS Group PLC.

Copyright © Veris Australia Pty Ltd
January 2024.

Plot Date: 09 Jan, 2024
 Computer File Ref: 403109-St3Fii-SP-A.dwg



LEGEND

- Rock Retaining Wall shown as:-
- Sleeper Retaining Wall shown as:-
- Landscape Retaining Wall shown as:-
- Sewer line
- Sewer Manhole
- Roofwater Drainage line and Catch Pit
- Stormwater Drainage Line
- Stormwater Manhole
- Stormwater Pit
- Water Main
- Water Conduit
- Water Service Point of Entry
- Underground Electricity, Street Light, Electricity Pillar & NBN
- Developer Fencing
- Concrete Pathway
- Landscape Street Tree
- Zero Setback Building Line
- Indicative Building Envelope
- Proposed Services Easement
- Indicative Parking Access Location
- Bin Pads

ADDITIONAL NOTES:

Allotments used as Multiple Residential Allotments in accordance with the approved Plan of Development may have a reduced primary road setback to 3.0metres as noted on the Plan of Development Table.

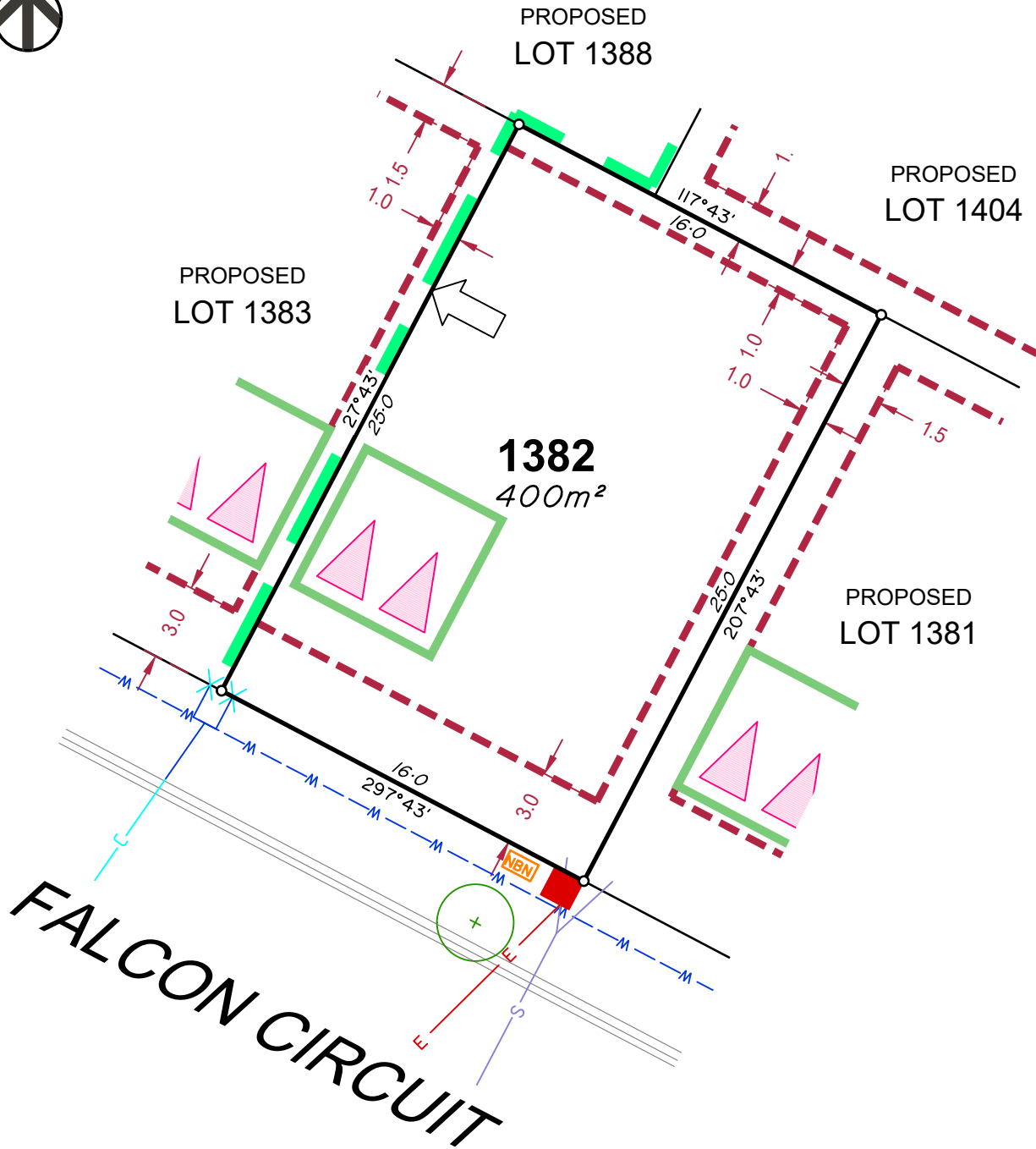
Compaction of any fill material placed on this site shall be completed to level one inspection and testing services in accordance with AS3798-2007.

Location of sewer, roofwater, stormwater, water reticulation and electricity lines, manholes and pits are those shown on engineering design drawings, supplied by Colliers and may differ from the as-constructed location.

Plan of Development information Supplied by RPS Group PLC.

Copyright © Veris Australia Pty Ltd
January 2024.

Plot Date: 09 Jan, 2024
 Computer File Ref: 403109-St3Fii-SP-A.dwg



LEGEND

Rock Retaining Wall shown as:-	
Sleeper Retaining Wall shown as:-	
Landscape Retaining Wall shown as:-	
Sewer line	
Sewer Manhole	
Roofwater Drainage line and Catch Pit	
Stormwater Drainage Line	
Stormwater Manhole	
Stormwater Pit	
Water Main	
Water Conduit	
Water Service Point of Entry	
Underground Electricity, Street Light, Electricity Pillar & NBN	
Developer Fencing	
Concrete Pathway	
Landscape Street Tree	
Zero Setback Building Line	
Indicative Building Envelope	
Proposed Services Easement	
Indicative Parking Access Location	
Bin Pads	

ADDITIONAL NOTES:

Allotments used as Multiple Residential Allotments in accordance with the approved Plan of Development may have a reduced primary road setback to 3.0metres as noted on the Plan of Development Table.

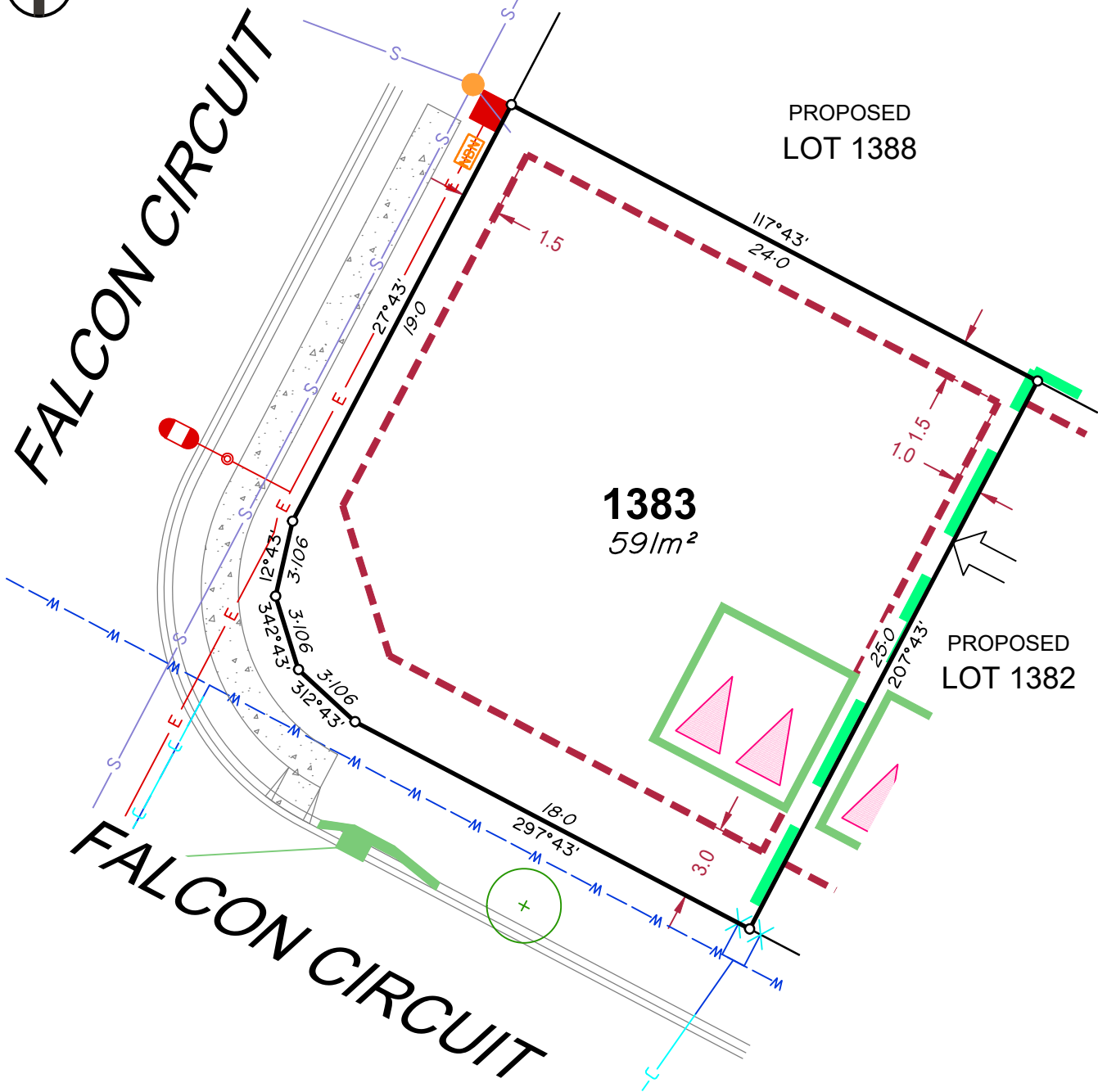
Compaction of any fill material placed on this site shall be completed to level one inspection and testing services in accordance with AS3798-2007.

Location of sewer, roofwater, stormwater, water reticulation and electricity lines, manholes and pits are those shown on engineering design drawings, supplied by Colliers and may differ from the as-constructed location.

Plan of Development information Supplied by RPS Group PLC.

Copyright © Veris Australia Pty Ltd
January 2024.

Plot Date: 09 Jan, 2024
Computer File Ref: 403109-St3Fii-SP-A.dwg



LEGEND

Rock Retaining Wall shown as:-	
Sleeper Retaining Wall shown as:-	
Landscape Retaining Wall shown as:-	
Sewer line	
Sewer Manhole	
Roofwater Drainage line and Catch Pit	
Stormwater Drainage Line	
Stormwater Manhole	
Stormwater Pit	
Water Main	
Water Conduit	
Water Service Point of Entry	
Underground Electricity, Street Light, Electricity Pillar & NBN	
Developer Fencing	
Concrete Pathway	
Landscape Street Tree	
Zero Setback Building Line	
Indicative Building Envelope	
Proposed Services Easement	
Indicative Parking Access Location	
Bin Pads	

ADDITIONAL NOTES:

Allotments used as Multiple Residential Allotments in accordance with the approved Plan of Development may have a reduced primary road setback to 3.0metres as noted on the Plan of Development Table.

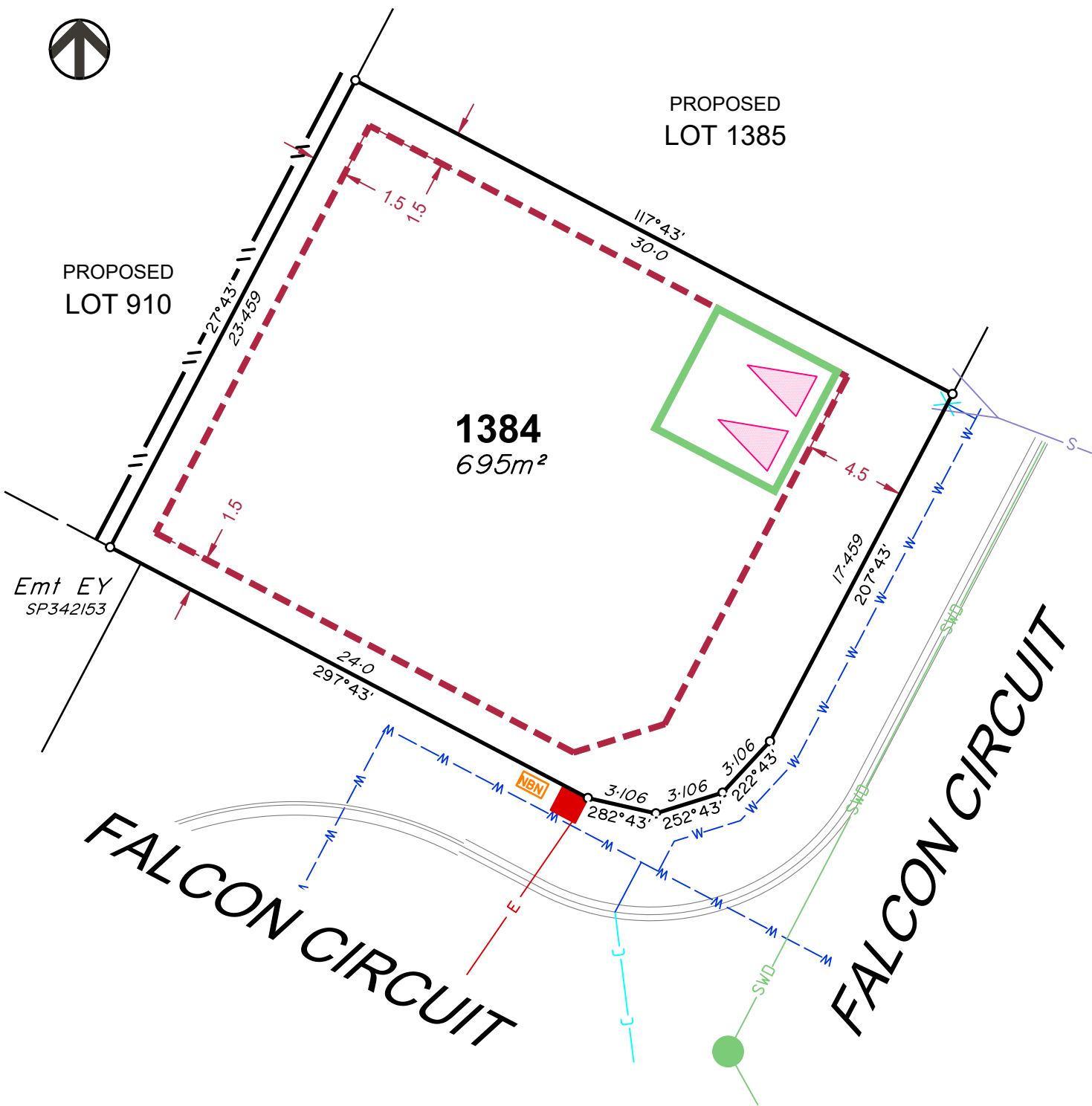
Compaction of any fill material placed on this site shall be completed to level one inspection and testing services in accordance with AS3798-2007.

Location of sewer, roofwater, stormwater, water reticulation and electricity lines, manholes and pits are those shown on engineering design drawings, supplied by Colliers and may differ from the as-constructed location.

Plan of Development information Supplied by RPS Group PLC.

Copyright © Veris Australia Pty Ltd
January 2024.

Plot Date: 09 Jan, 2024
 Computer File Ref: 403109-St3Fii-SP-A.dwg



LEGEND

Rock Retaining Wall shown as:-	
Sleeper Retaining Wall shown as:-	
Landscape Retaining Wall shown as:-	
Sewer line	
Sewer Manhole	
Roofwater Drainage line and Catch Pit	
Stormwater Drainage Line	
Stormwater Manhole	
Stormwater Pit	
Water Main	
Water Conduit	
Water Service Point of Entry	
Underground Electricity, Street Light, Electricity Pillar & NBN	
Developer Fencing	
Concrete Pathway	
Landscape Street Tree	
Zero Setback Building Line	
Proposed Services Easement	
Indicative Parking Access Location	
Bin Pads	
Indicative Building Envelope	

ADDITIONAL NOTES:

Allotments used as Multiple Residential Allotments in accordance with the approved Plan of Development may have a reduced primary road setback to 3.0metres as noted on the Plan of Development Table.

Compaction of any fill material placed on this site shall be completed to level one inspection and testing services in accordance with AS3798-2007.

Location of sewer, roofwater, stormwater, water reticulation and electricity lines, manholes and pits are those shown on engineering design drawings, supplied by Colliers and may differ from the as-constructed location.

Plan of Development information Supplied by RPS Group PLC.

Copyright © Veris Australia Pty Ltd
January 2024.

Plot Date: 09 Jan, 2024
Computer File Ref: 403109-St3Fii-SP-A.dwg



PROPOSED LOT 1391

PROPOSED LOT 1390

PROPOSED LOT 1389

PROPOSED LOT 1403

PROPOSED LOT 1401

1402
375m²

PROPOSED LOT 1391

PROPOSED LOT 1390

PROPOSED LOT 1389

PROPOSED LOT 1401

PROPOSED LOT 1403

PROPOSED LOT 1405

BIN LOCATION

FALCON CIRCUIT

LEGEND

Rock Retaining Wall shown as:-



Sleeper Retaining Wall shown as:-



Landscape Retaining Wall shown as:-



Sewer line



Sewer Manhole



Roofwater Drainage line and Catch Pit



Stormwater Drainage Line



Stormwater Manhole



Stormwater Pit



Water Main



Water Conduit



Water Service Point of Entry



Underground Electricity, Street Light, Electricity Pillar & NBN



Developer Fencing



Concrete Pathway



Landscape Street Tree



Zero Setback Building Line



Indicative Building Envelope



Proposed Services Easement



Indicative Parking Access Location



Bin Pads



ADDITIONAL NOTES:

Allotments used as Multiple Residential Allotments in accordance with the approved Plan of Development may have a reduced primary road setback to 3.0metres as noted on the Plan of Development Table.

Compaction of any fill material placed on this site shall be completed to level one inspection and testing services in accordance with AS3798-2007.

Location of sewer, roofwater, stormwater, water reticulation and electricity lines, manholes and pits are those shown on engineering design drawings, supplied by Colliers and may differ from the as-constructed location.

Plan of Development information Supplied by RPS Group PLC.

Copyright © Veris Australia Pty Ltd
January 2024.

Plot Date: 09 Jan, 2024
Computer File Ref: 403109-St3Fii-SP-A.dwg



ADDITIONAL NOTES:

Allotments used as Multiple Residential Allotments in accordance with the approved Plan of Development may have a reduced primary road setback to 3.0metres as noted on the Plan of Development Table.

Compaction of any fill material placed on this site shall be completed to level one inspection and testing services in accordance with AS3798-2007.

Location of sewer, roofwater, stormwater, water reticulation and electricity lines, manholes and pits are those shown on engineering design drawings, supplied by Colliers and may differ from the as-constructed location.

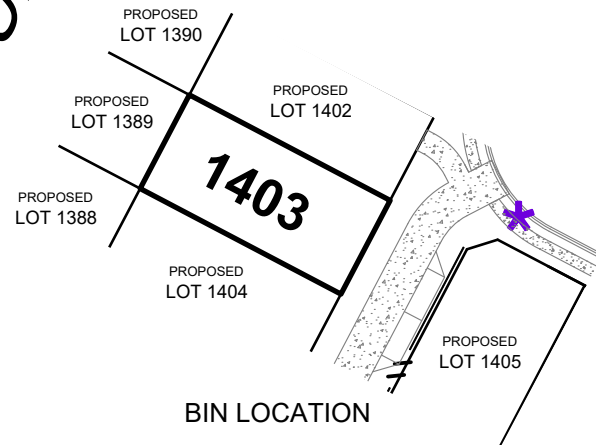
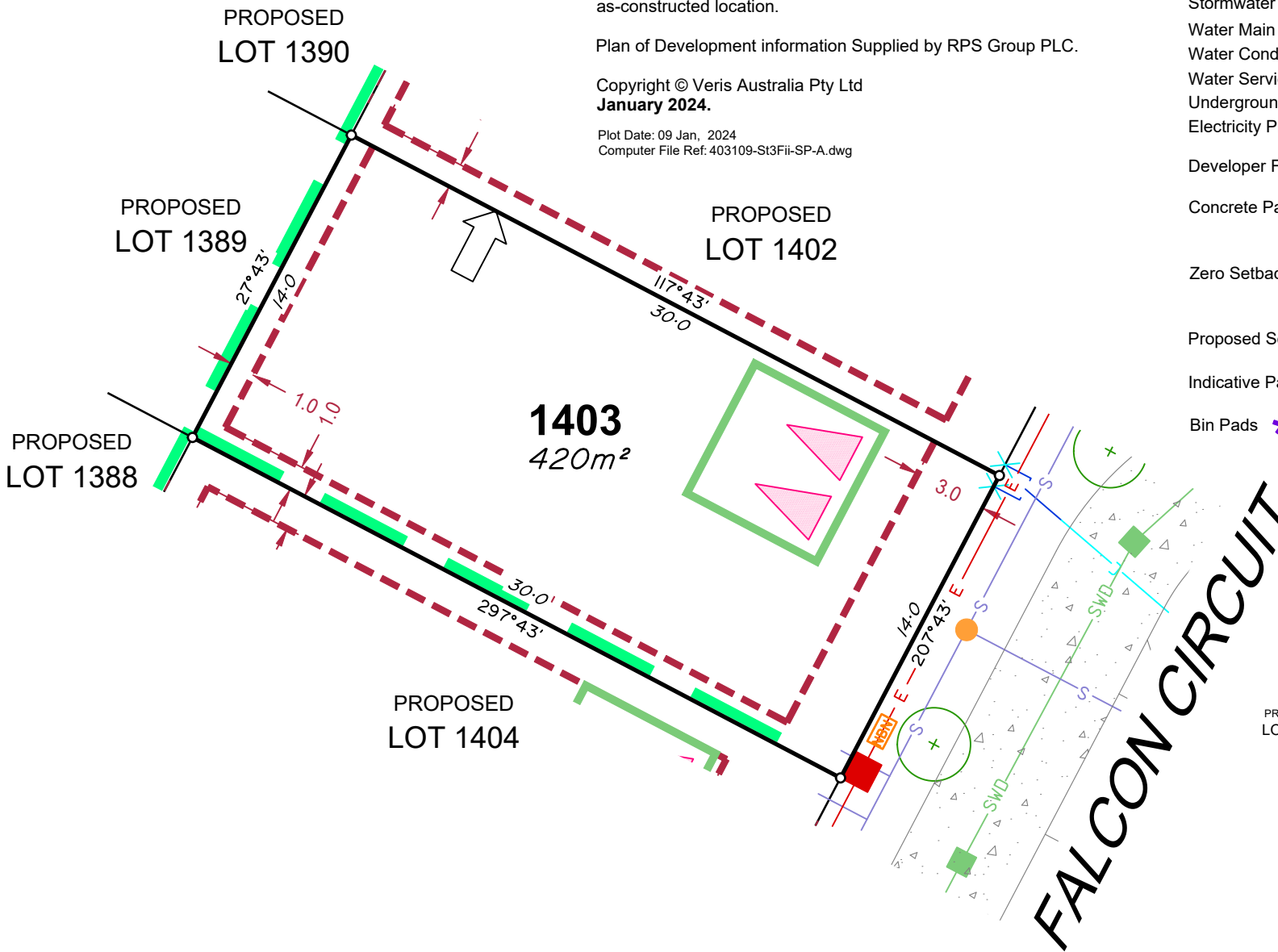
Plan of Development information Supplied by RPS Group PLC.

Copyright © Veris Australia Pty Ltd
January 2024.

Plot Date: 09 Jan, 2024
Computer File Ref: 403109-S13Fii-SP-A.dwg



LEGEND



- Rock Retaining Wall shown as:-
- Sleeper Retaining Wall shown as:-
- Landscape Retaining Wall shown as:-
- Sewer line
- Sewer Manhole
- Roofwater Drainage line and Catch Pit
- Stormwater Drainage Line
- Stormwater Manhole
- Stormwater Pit
- Water Main
- Water Conduit
- Water Service Point of Entry
- Underground Electricity, Street Light, Electricity Pillar & NBN
- Developer Fencing
- Concrete Pathway
- Landscape Street Tree
- Zero Setback Building Line
- Indicative Building Envelope
- Proposed Services Easement
- Indicative Parking Access Location
- Bin Pads







LEGEND

Rock Retaining Wall shown as:-  

Sleeper Retaining Wall shown as:-  

Landscape Retaining Wall shown as:-  

Sewer line 

Sewer Manhole 

Roofwater Drainage line and Catch Pit 

Stormwater Drainage Line 


Stormwater Manhole 

Stormwater Pit 

Water Main 

Water Conduit 

Water Service Point of Entry 


Underground Electricity, Street Light, Electricity Pillar & NBN 

Developer Fencing 

Concrete Pathway  Landscape Street Tree 

Zero Setback Building Line  Indicative Building Envelope 

Proposed Services Easement 

Indicative Parking Access Location 

Bin Pads 

ADDITIONAL NOTES:

Allotments used as Multiple Residential Allotments in accordance with the approved Plan of Development may have a reduced primary road setback to 3.0metres as noted on the Plan of Development Table.

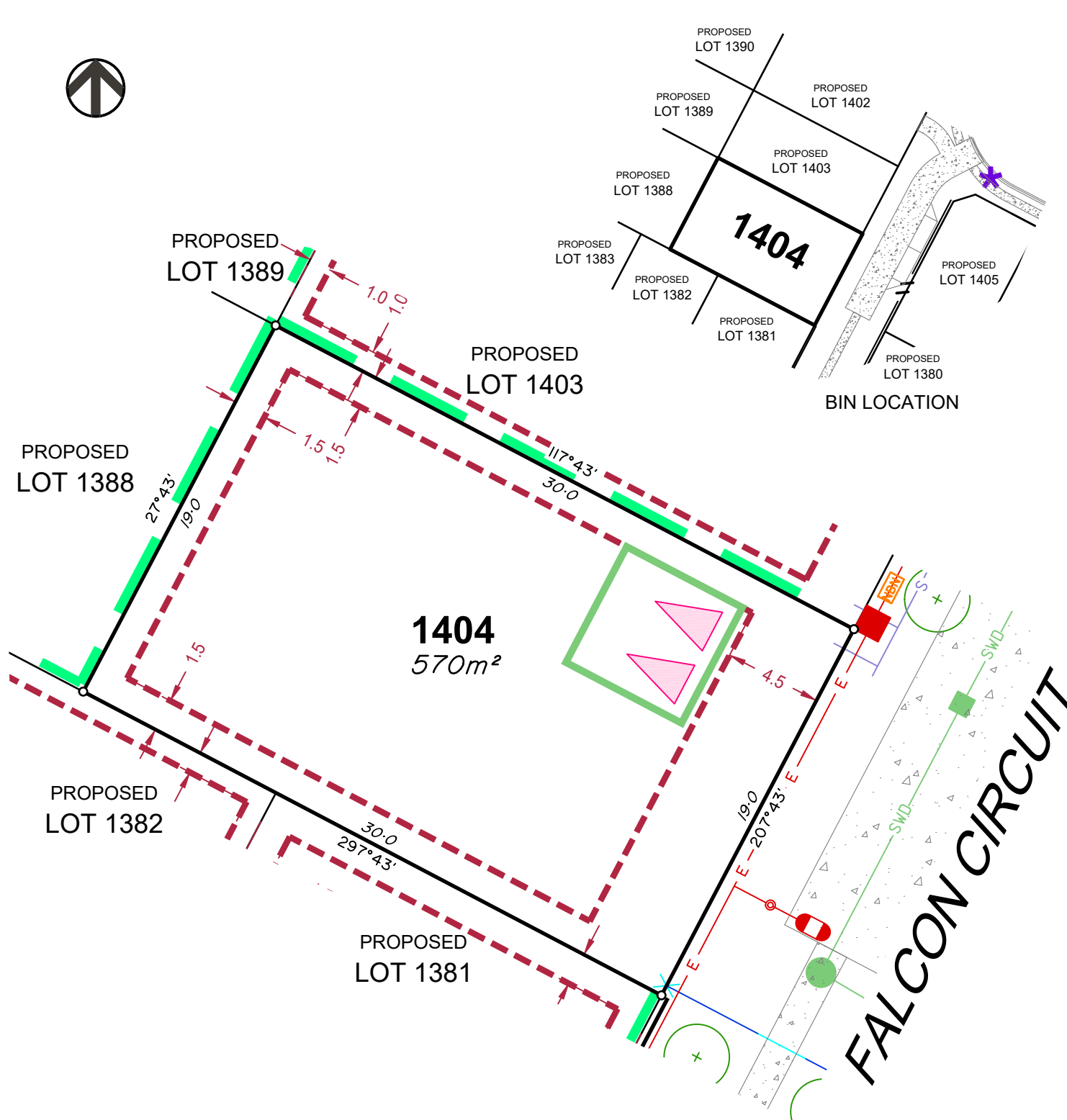
Compaction of any fill material placed on this site shall be completed to level one inspection and testing services in accordance with AS3798-2007.

Location of sewer, roofwater, stormwater, water reticulation and electricity lines, manholes and pits are those shown on engineering design drawings, supplied by Colliers and may differ from the as-constructed location.

Plan of Development information Supplied by RPS Group PLC.

Copyright © Veris Australia Pty Ltd
January 2024.

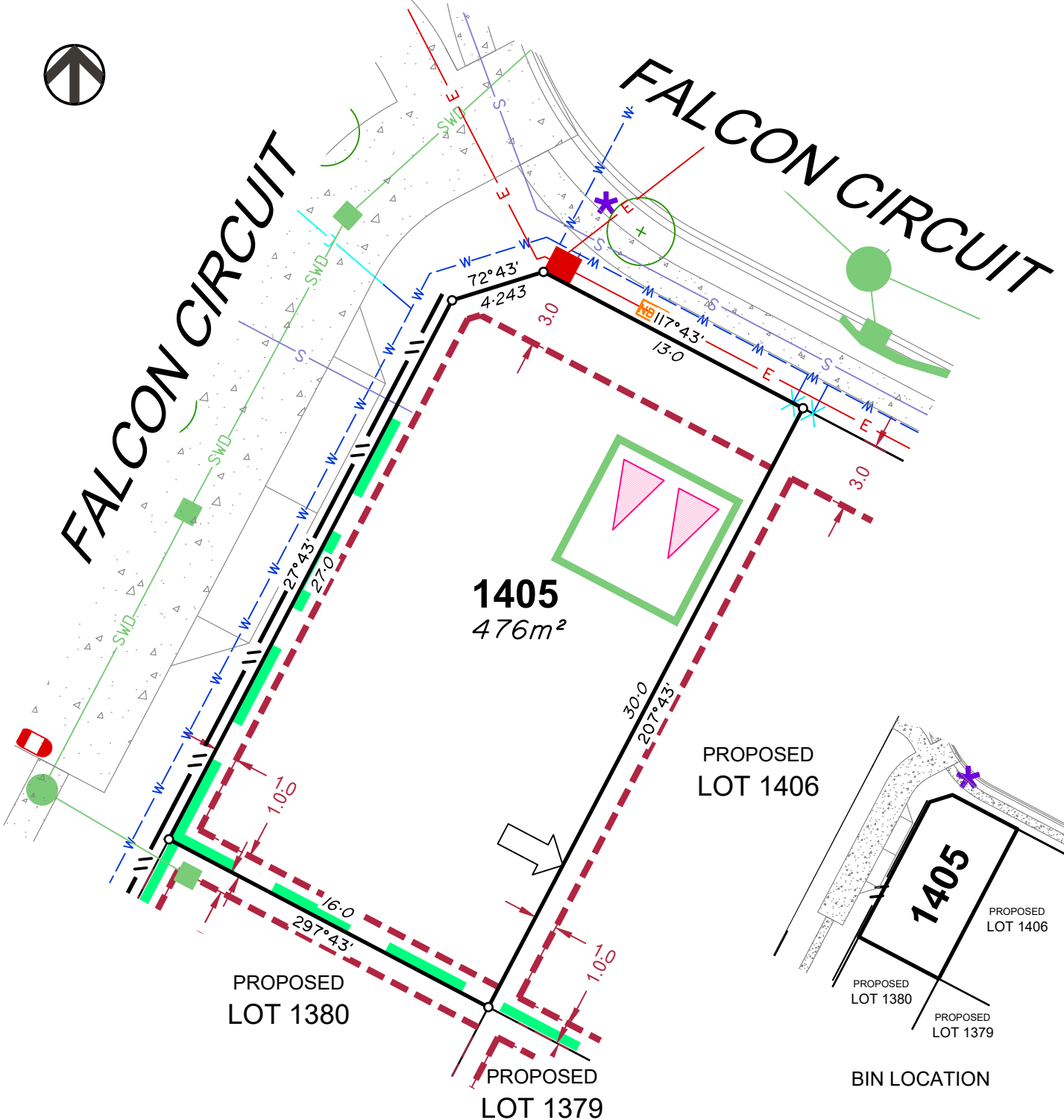
Plot Date: 09 Jan, 2024
Computer File Ref: 403109-St3Fii-SP-A.dwg





FALCON CIRCUIT

FALCON CIRCUIT



1405
476m²

PROPOSED
LOT 1406

PROPOSED
LOT 1380

PROPOSED
LOT 1379

1405

PROPOSED
LOT 1406

PROPOSED
LOT 1380

PROPOSED
LOT 1379

BIN LOCATION

LEGEND

- Rock Retaining Wall shown as:-
- Sleeper Retaining Wall shown as:-
- Landscape Retaining Wall shown as:-
- Sewer line
- Sewer Manhole
- Roofwater Drainage line and Catch Pit
- Stormwater Drainage Line
- Stormwater Manhole
- Stormwater Pit
- Water Main
- Water Conduit
- Water Service Point of Entry
- Underground Electricity, Street Light, Electricity Pillar & NBN
- Developer Fencing
- Concrete Pathway
- Landscape Street Tree
- Zero Setback Building Line
- Indicative Building Envelope
- Proposed Services Easement
- Indicative Parking Access Location
- Bin Pads

ADDITIONAL NOTES:

Allotments used as Multiple Residential Allotments in accordance with the approved Plan of Development may have a reduced primary road setback to 3.0metres as noted on the Plan of Development Table.

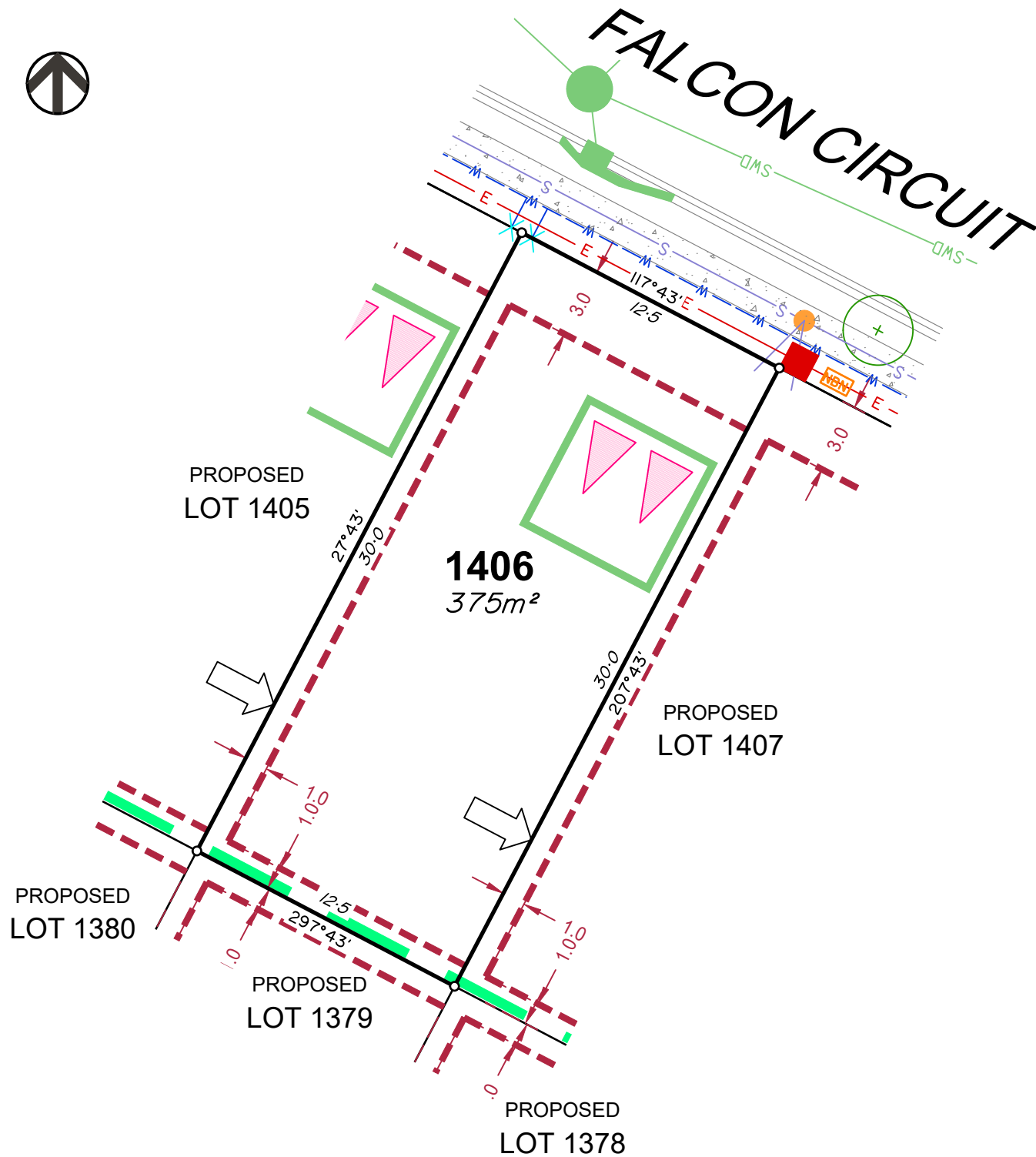
Compaction of any fill material placed on this site shall be completed to level one inspection and testing services in accordance with AS3798-2007.

Location of sewer, roofwater, stormwater, water reticulation and electricity lines, manholes and pits are those shown on engineering design drawings, supplied by Colliers and may differ from the as-constructed location.

Plan of Development information Supplied by RPS Group PLC.

Copyright © Veris Australia Pty Ltd
January 2024.

Plot Date: 09 Jan, 2024
Computer File Ref: 403109-St3Fii-SP-A.dwg



LEGEND

Rock Retaining Wall shown as:-	
Sleeper Retaining Wall shown as:-	
Landscape Retaining Wall shown as:-	
Sewer line	
Sewer Manhole	
Roofwater Drainage line and Catch Pit	
Stormwater Drainage Line	
Stormwater Manhole	
Stormwater Pit	
Water Main	
Water Conduit	
Water Service Point of Entry	
Underground Electricity, Street Light, Electricity Pillar & NBN	
Developer Fencing	
Concrete Pathway	
Landscape Street Tree	
Zero Setback Building Line	
Indicative Building Envelope	
Proposed Services Easement	
Indicative Parking Access Location	
Bin Pads	

ADDITIONAL NOTES:

Allotments used as Multiple Residential Allotments in accordance with the approved Plan of Development may have a reduced primary road setback to 3.0metres as noted on the Plan of Development Table.

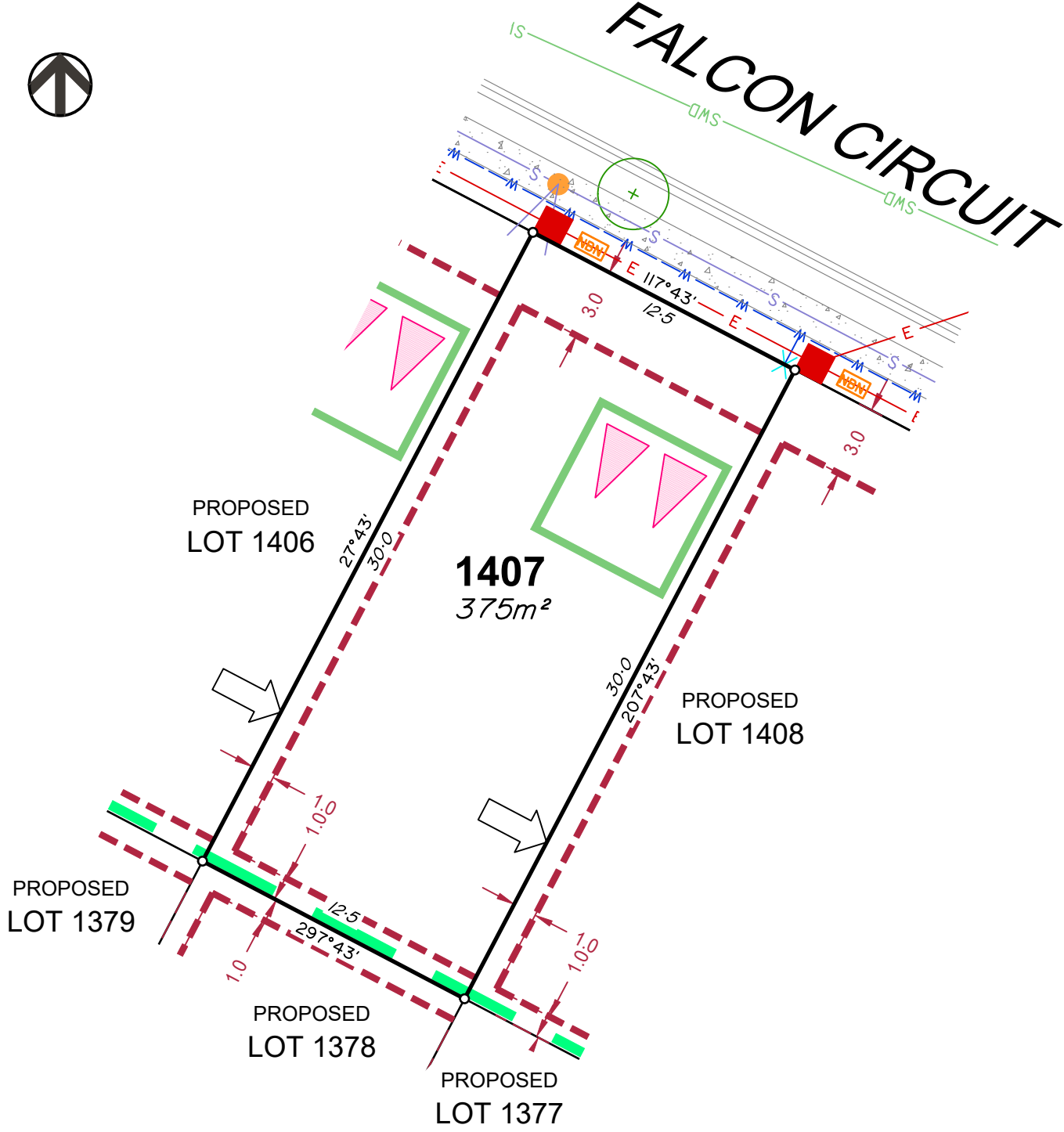
Compaction of any fill material placed on this site shall be completed to level one inspection and testing services in accordance with AS3798-2007.

Location of sewer, roofwater, stormwater, water reticulation and electricity lines, manholes and pits are those shown on engineering design drawings, supplied by Colliers and may differ from the as-constructed location.

Plan of Development information Supplied by RPS Group PLC.

Copyright © Veris Australia Pty Ltd
January 2024.

Plot Date: 09 Jan, 2024
Computer File Ref: 403109-St3Fii-SP-A.dwg



LEGEND

Rock Retaining Wall shown as:-		
Sleeper Retaining Wall shown as:-		
Landscape Retaining Wall shown as:-		
Sewer line		
Sewer Manhole		
Roofwater Drainage line and Catch Pit		
Stormwater Drainage Line		
Stormwater Manhole		
Stormwater Pit		
Water Main		
Water Conduit		
Water Service Point of Entry		
Underground Electricity, Street Light, Electricity Pillar & NBN		
Developer Fencing		
Concrete Pathway		
Zero Setback Building Line		
Proposed Services Easement		
Indicative Parking Access Location		
Bin Pads		

ADDITIONAL NOTES:

Allotments used as Multiple Residential Allotments in accordance with the approved Plan of Development may have a reduced primary road setback to 3.0metres as noted on the Plan of Development Table.

Compaction of any fill material placed on this site shall be completed to level one inspection and testing services in accordance with AS3798-2007.

Location of sewer, roofwater, stormwater, water reticulation and electricity lines, manholes and pits are those shown on engineering design drawings, supplied by Colliers and may differ from the as-constructed location.

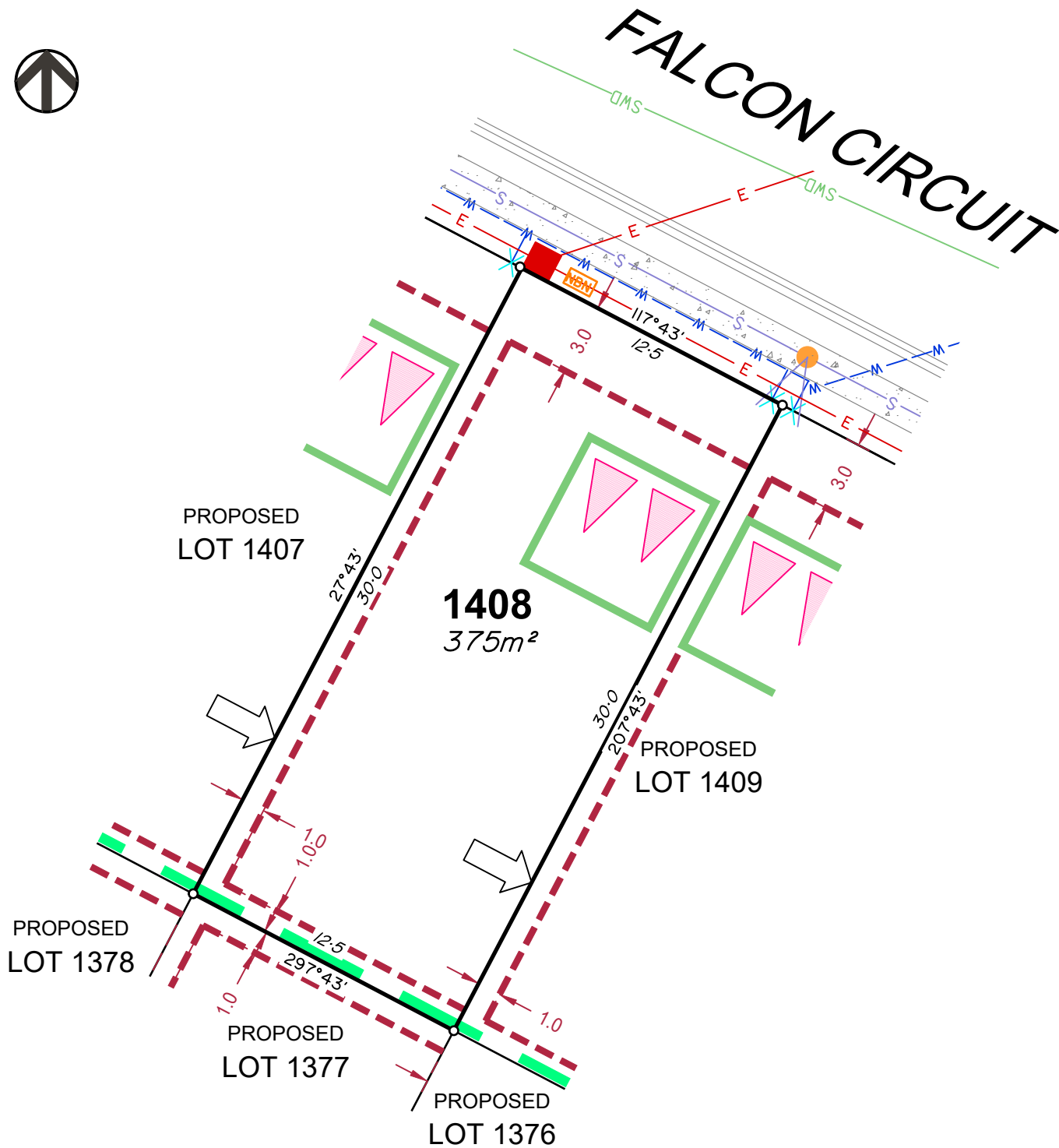
Plan of Development information Supplied by RPS Group PLC.

Copyright © Veris Australia Pty Ltd
January 2024.

Plot Date: 09 Jan, 2024
Computer File Ref: 403109-St3Fii-SP-A.dwg



FALCON CIRCUIT



LEGEND

- Rock Retaining Wall shown as:-
- Sleeper Retaining Wall shown as:-
- Landscape Retaining Wall shown as:-
- Sewer line
- Sewer Manhole
- Roofwater Drainage line and Catch Pit
- Stormwater Drainage Line
- Stormwater Manhole
- Stormwater Pit
- Water Main
- Water Conduit
- Water Service Point of Entry
- Underground Electricity, Street Light, Electricity Pillar & NBN
- Developer Fencing
- Concrete Pathway
- Landscape Street Tree
- Zero Setback Building Line
- Indicative Building Envelope
- Proposed Services Easement
- Indicative Parking Access Location
- Bin Pads

ADDITIONAL NOTES:

Allotments used as Multiple Residential Allotments in accordance with the approved Plan of Development may have a reduced primary road setback to 3.0metres as noted on the Plan of Development Table.

Compaction of any fill material placed on this site shall be completed to level one inspection and testing services in accordance with AS3798-2007.

Location of sewer, roofwater, stormwater, water reticulation and electricity lines, manholes and pits are those shown on engineering design drawings, supplied by Colliers and may differ from the as-constructed location.

Plan of Development information Supplied by RPS Group PLC.

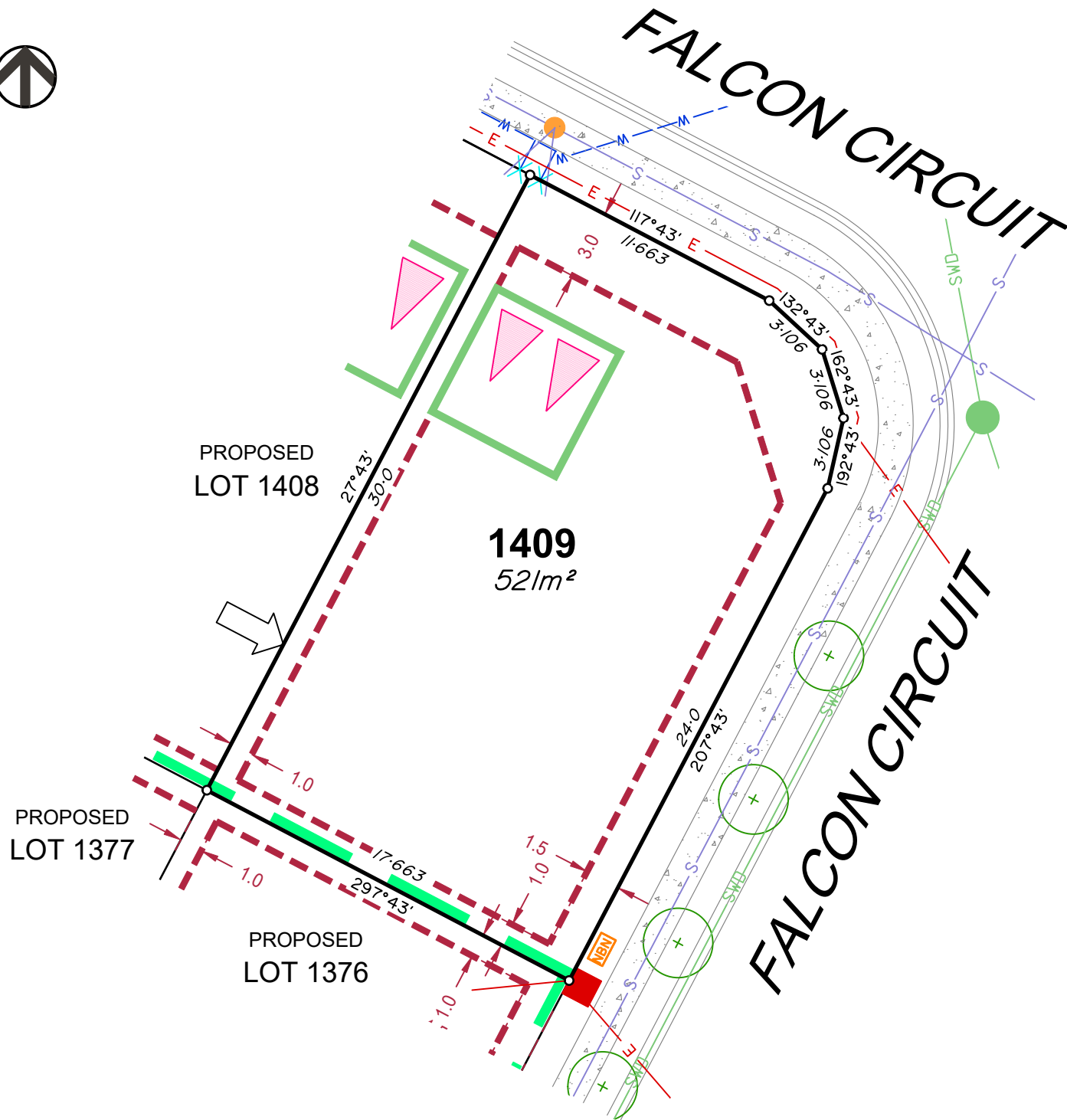
Copyright © Veris Australia Pty Ltd
January 2024.

Plot Date: 09 Jan, 2024
 Computer File Ref: 403109-St3Fii-SP-A.dwg



FALCON CIRCUIT

FALCON CIRCUIT



LEGEND

- Rock Retaining Wall shown as:-
- Sleeper Retaining Wall shown as:-
- Landscape Retaining Wall shown as:-
- Sewer line
- Sewer Manhole
- Roofwater Drainage line and Catch Pit
- Stormwater Drainage Line
- Stormwater Manhole
- Stormwater Pit
- Water Main
- Water Conduit
- Water Service Point of Entry
- Underground Electricity, Street Light, Electricity Pillar & NBN
- Developer Fencing
- Concrete Pathway
- Landscape Street Tree
- Zero Setback Building Line
- Indicative Building Envelope
- Proposed Services Easement
- Indicative Parking Access Location
- Bin Pads

ADDITIONAL NOTES:

Allotments used as Multiple Residential Allotments in accordance with the approved Plan of Development may have a reduced primary road setback to 3.0metres as noted on the Plan of Development Table.

Compaction of any fill material placed on this site shall be completed to level one inspection and testing services in accordance with AS3798-2007.

Location of sewer, roofwater, stormwater, water reticulation and electricity lines, manholes and pits are those shown on engineering design drawings, supplied by Colliers and may differ from the as-constructed location.

Plan of Development information Supplied by RPS Group PLC.

Copyright © Veris Australia Pty Ltd
January 2024.

Plot Date: 09 Jan, 2024
 Computer File Ref: 403109-St3Fii-SP-A.dwg



FALCON CIRCUIT

PROPOSED
LOT 1388

2

1383
591m²

PROPOSED
LOT 1382

FALCON CIRCUIT

LOT SPECIFIC COVENANT

Lot # 1383

This page includes lot specific requirements which must be included in the delivery of your lot. This page forms part of your covenant and your land sales contract, and compliance is mandatory.

Multi Unit Dwelling Site

This site may have 2 units on the lot.

Not permitted

You are not permitted a pool in the front yard.

Notes

Changes to the above requirements are not permitted without the written permission of Peet.