

LOT SPECIFIC COVENANT

Lot # 2131

This page includes lot specific requirements which must be included in the delivery of your lot. This page forms part of your covenant and your land sales contract, and compliance is mandatory.

Multi Unit Dwelling Site

This site may have 2 units on the lot.

Not permitted

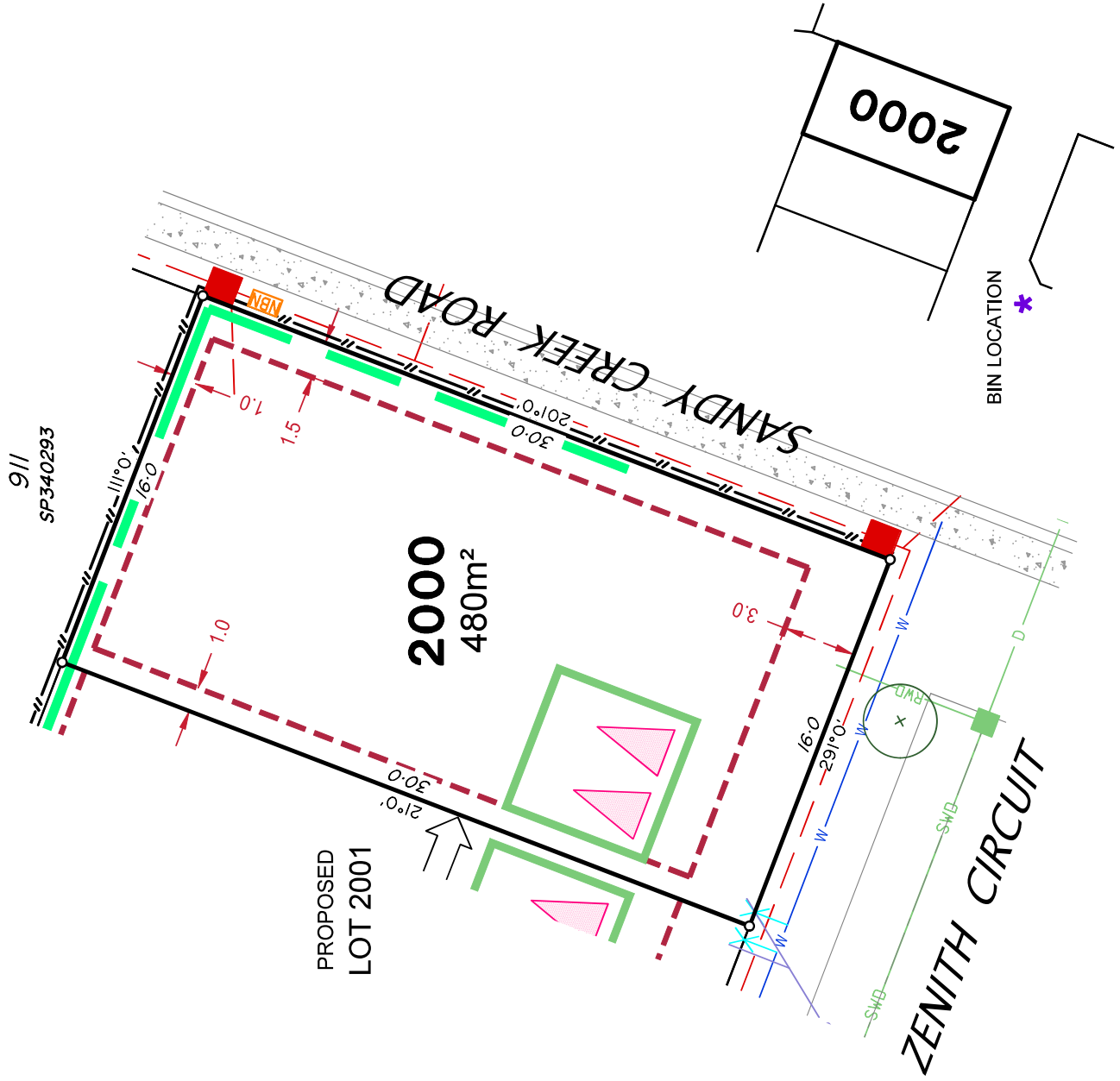
You are not permitted a pool in the front yard.

Notes

Changes to the above requirements are not permitted without the written permission of Peet.

LEGEND

- Rock Retaining Wall shown as:-
- Sleeper Retaining Wall shown as:-
- Landscape Retaining Wall shown as:-
- Sewer line
- Sewer Manhole
- Roofwater Drainage line and Catch Pit
- Stormwater Drainage Line
- Stormwater Manhole
- Stormwater Pit
- Water Main
- Water Conduit
- Water Service Point of Entry
- Underground Electricity, Street Light, Electricity Pillar & NBN
- Developer Fencing
- Concrete Pathway
- Zero Setback Building Line
- Landscape Street Tree
- Indicative Building Envelope
- Bin Pads
- Indicative Parking Access Location



ADDITIONAL NOTES:

Allotments used as Multiple Residential Allotments in accordance with the approved Plan of Development may have a reduced primary road setback to 3.0metres as noted on the Plan of Development Table.

Compaction of any fill material placed on this site shall be completed to level one inspection and testing services in accordance with AS3798-2007.

Location of sewer, roofwater, stormwater, water reticulation and electricity lines, manholes and pits are those shown on engineering design drawings, supplied by Peak Urban and may differ from the as-constructed location.

Plan of Development information Supplied by RPS Group PLC.

Copyright © Veris Australia Pty Ltd
May 2024

Plot Date: 09 May, 2024
Computer File Ref: 30109-St5S-SP-(A).dwg

LEGEND

- Rock Retaining Wall shown as:-
- Sleeper Retaining Wall shown as:-
- Landscape Retaining Wall shown as:-
- Sewer line
- Sewer Manhole
- Roofwater Drainage line and Catch Pit
- Stormwater Drainage Line
- Stormwater Manhole
- Stormwater Pit
- Water Main
- Water Conduit
- Water Service Point of Entry
- Underground Electricity, Street Light, Electricity Pillar & NBN
- Developer Fencing
- Concrete Pathway
- Landscape Street Tree
- Zero Setback Building Line
- Indicative Building Envelope
- Bin Pads
- Indicative Parking Access Location

ADDITIONAL NOTES:

Allotments used as Multiple Residential Allotments in accordance with the approved Plan of Development may have a reduced primary road setback to 3.0metres as noted on the Plan of Development Table.

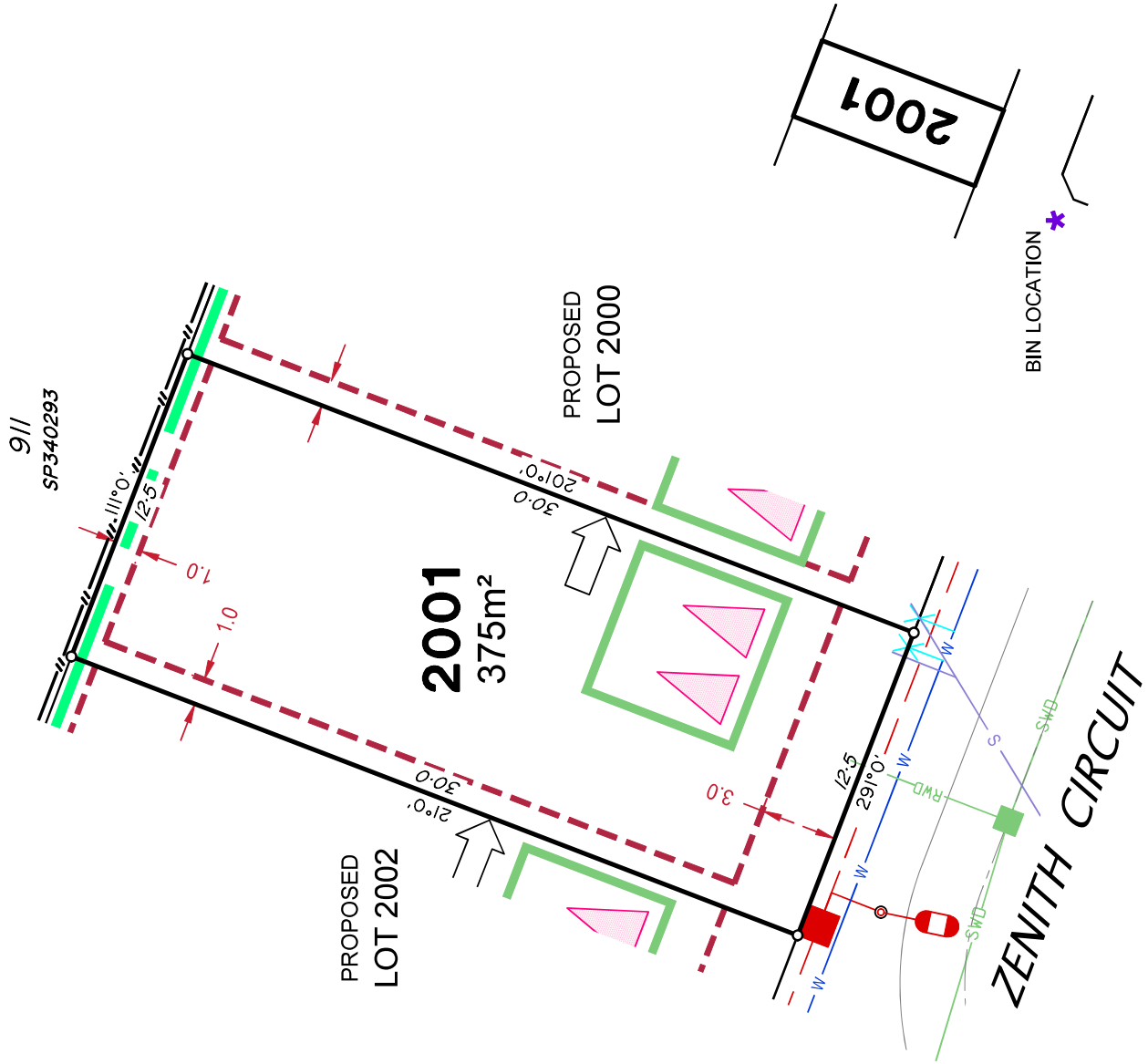
Compaction of any fill material placed on this site shall be completed to level one inspection and testing services in accordance with AS3798-2007.

Location of sewer, roofwater, stormwater, water reticulation and electricity lines, manholes and pits are those shown on engineering design drawings, supplied by Peak Urban and may differ from the as-constructed location.

Plan of Development information Supplied by RPS Group PLC.

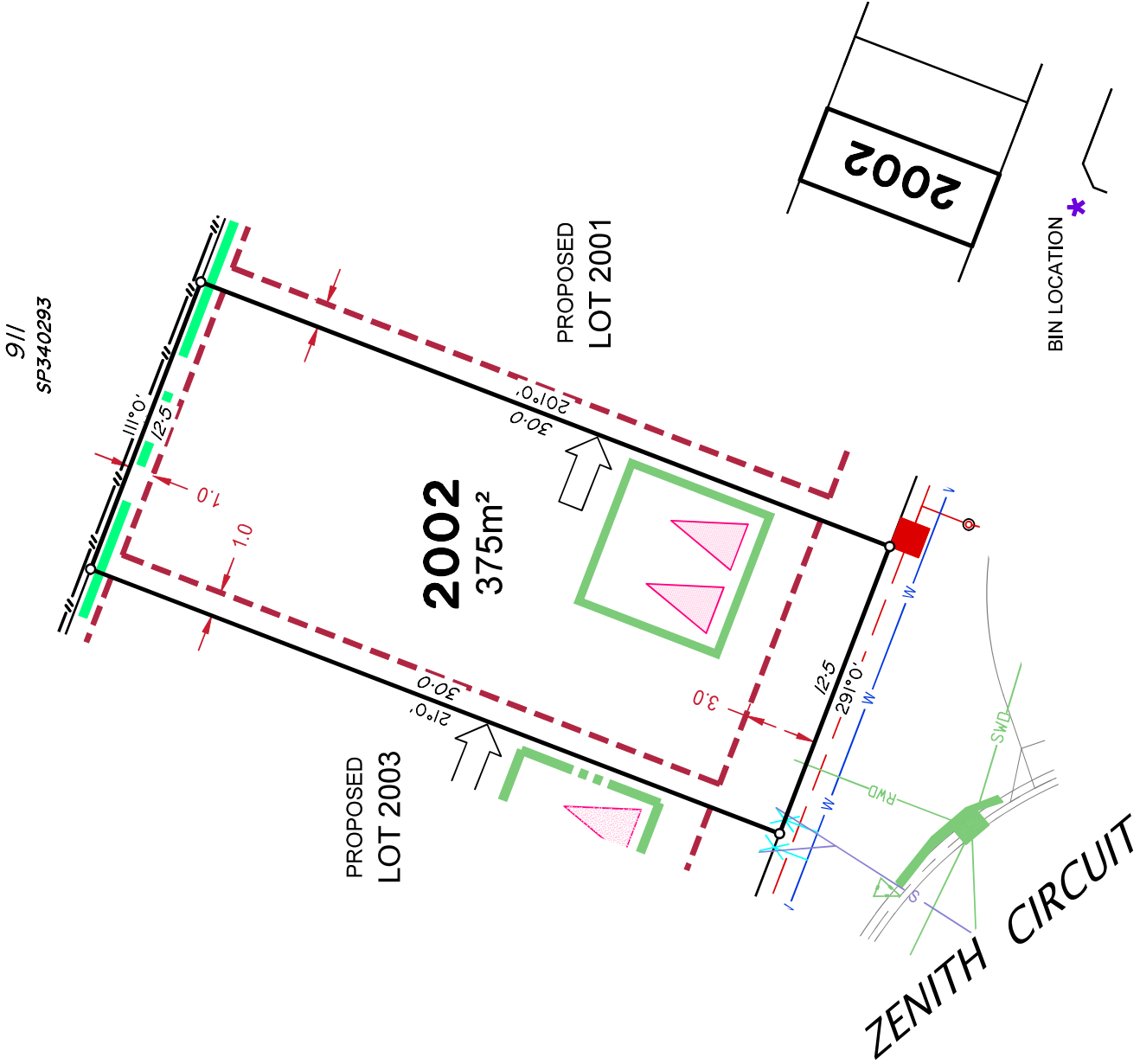
Copyright © Veris Australia Pty Ltd
May 2024

Plot Date: 09 May, 2024
 Computer File Ref: 30109-StGS-SP-(A).dwg



LEGEND

- Rock Retaining Wall shown as:-
- Sleeper Retaining Wall shown as:-
- Landscape Retaining Wall shown as:-
- Sewer line
- Sewer Manhole
- Roofwater Drainage line and Catch Pit
- Stormwater Drainage Line
- Stormwater Manhole
- Stormwater Pit
- Water Main
- Water Conduit
- Water Service Point of Entry
- Underground Electricity, Street Light, Electricity Pillar & NBN
- Developer Fencing
- Concrete Pathway
- Zero Setback Building Line
- Landscape Street Tree
- Indicative Building Envelope
- Bin Pads
- Indicative Parking Access Location



ADDITIONAL NOTES:

Allotments used as Multiple Residential Allotments in accordance with the approved Plan of Development may have a reduced primary road setback to 3.0metres as noted on the Plan of Development Table.

Compaction of any fill material placed on this site shall be completed to level one inspection and testing services in accordance with AS3798-2007.

Location of sewer, roofwater, stormwater, stormwater, water reticulation and electricity lines, manholes and pits are those shown on engineering design drawings, supplied by Peak Urban and may differ from the as-constructed location.

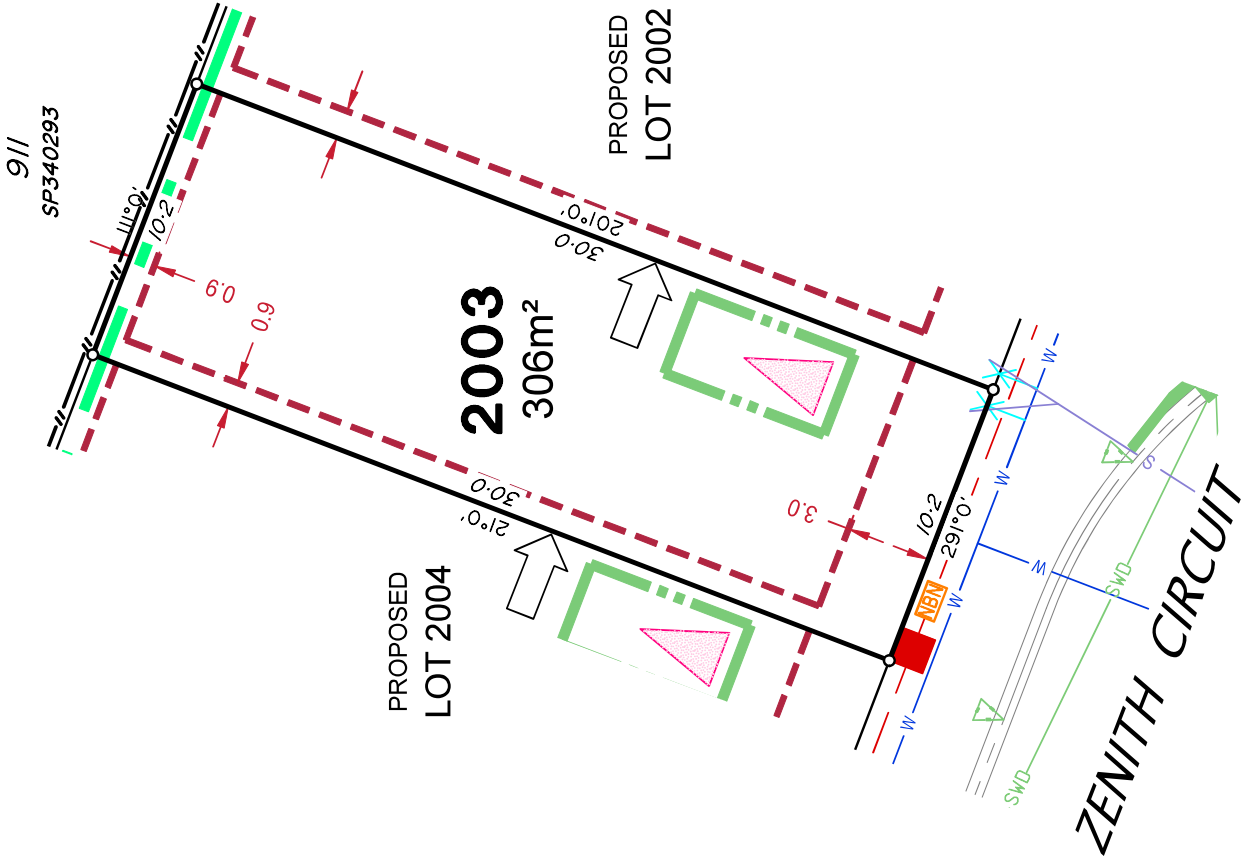
Plan of Development information Supplied by RPS Group PLC.

Copyright © Veris Australia Pty Ltd
May 2024

Plot Date: 09 May, 2024
 Computer File Ref: 30108-S16S-SP-(A).dwg

LEGEND

- Rock Retaining Wall shown as:-
- Sleeper Retaining Wall shown as:-
- Landscape Retaining Wall shown as:-
- Sewer line
- Sewer Manhole
- Roofwater Drainage line and Catch Pit
- Stormwater Drainage Line
- Stormwater Manhole
- Stormwater Pit
- Water Main
- Water Conduit
- Water Service Point of Entry
- Underground Electricity, Street Light, Electricity Pillar & NBN
- Developer Fencing
- Concrete Pathway
- Landscape Street Tree
- Zero Setback Building Line
- Indicative Building Envelope
- Bin Pads
- Indicative Parking Access Location



ADDITIONAL NOTES:

Allotments used as Multiple Residential Allotments in accordance with the approved Plan of Development may have a reduced primary road setback to 3.0metres as noted on the Plan of Development Table.

Compaction of any fill material placed on this site shall be completed to level one inspection and testing services in accordance with AS3798-2007.

Location of sewer, roofwater, stormwater, water reticulation and electricity lines, manholes and pits are those shown on engineering design drawings, supplied by Peak Urban and may differ from the as-constructed location.

Plan of Development information Supplied by RPS Group PLC.
 Copyright © Veris Australia Pty Ltd
May 2024
 Plot Date: 09 May, 2024
 Computer File Ref: 30109-Stf5S-SP-(A).dwg

LEGEND

- Rock Retaining Wall shown as:-
- Sleeper Retaining Wall shown as:-
- Landscape Retaining Wall shown as:-
- Sewer line
- Sewer Manhole
- Roofwater Drainage line and Catch Pit
- Stormwater Drainage Line
- Stormwater Manhole
- Stormwater Pit
- Water Main
- Water Conduit
- Water Service Point of Entry
- Underground Electricity, Street Light, Electricity Pillar & NBN
- Developer Fencing
- Concrete Pathway
- Zero Setback Building Line
- Bin Pads
- Indicative Parking Access Location
- Landscape Street Tree
- Indicative Building Envelope

ADDITIONAL NOTES:

Allotments used as Multiple Residential Allotments in accordance with the approved Plan of Development may have a reduced primary road setback to 3.0metres as noted on the Plan of Development Table.

Compaction of any fill material placed on this site shall be completed to level one inspection and testing services in accordance with AS3798-2007.

Location of sewer, roofwater, stormwater, stormwater, water reticulation and electricity lines, manholes and pits are those shown on engineering design drawings, supplied by Peak Urban and may differ from the as-constructed location.

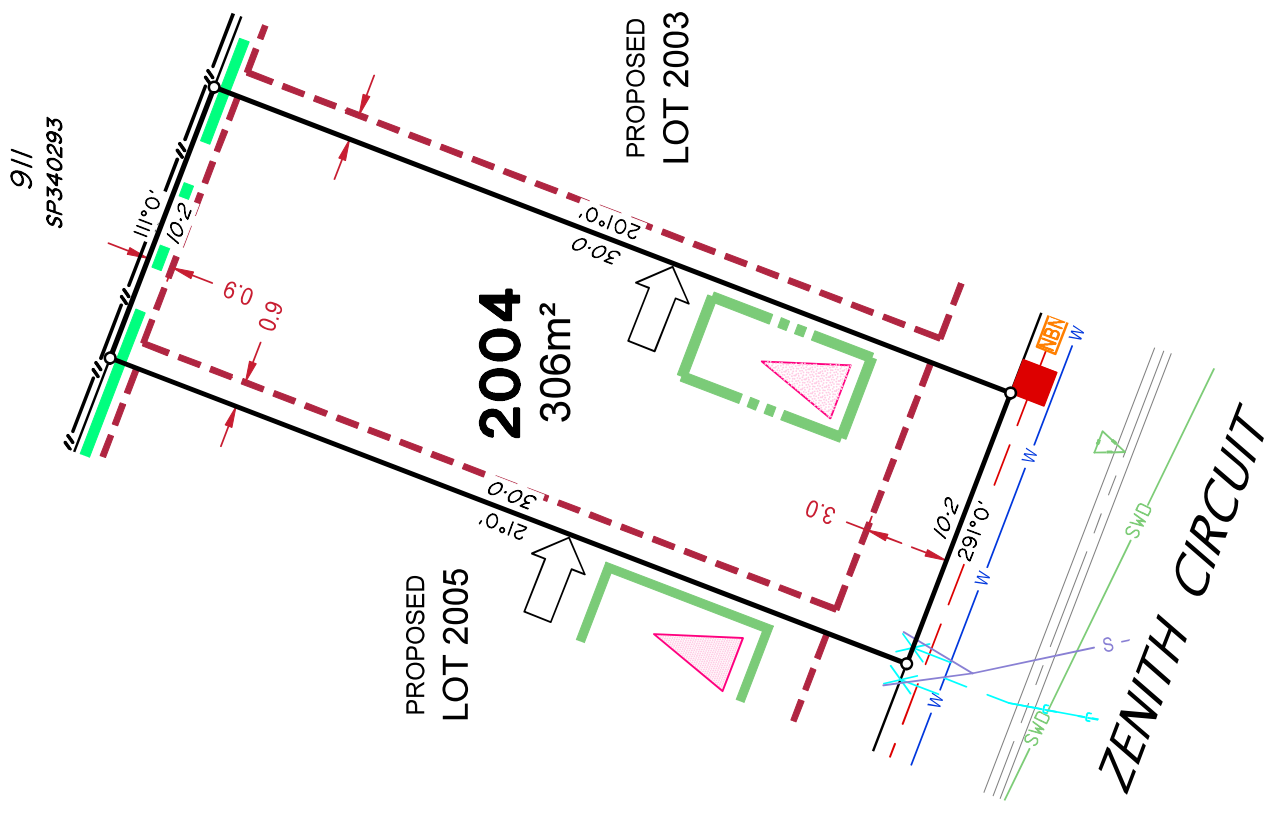
Plan of Development information Supplied by RPS Group PLC.

Copyright © Veris Australia Pty Ltd

May 2024

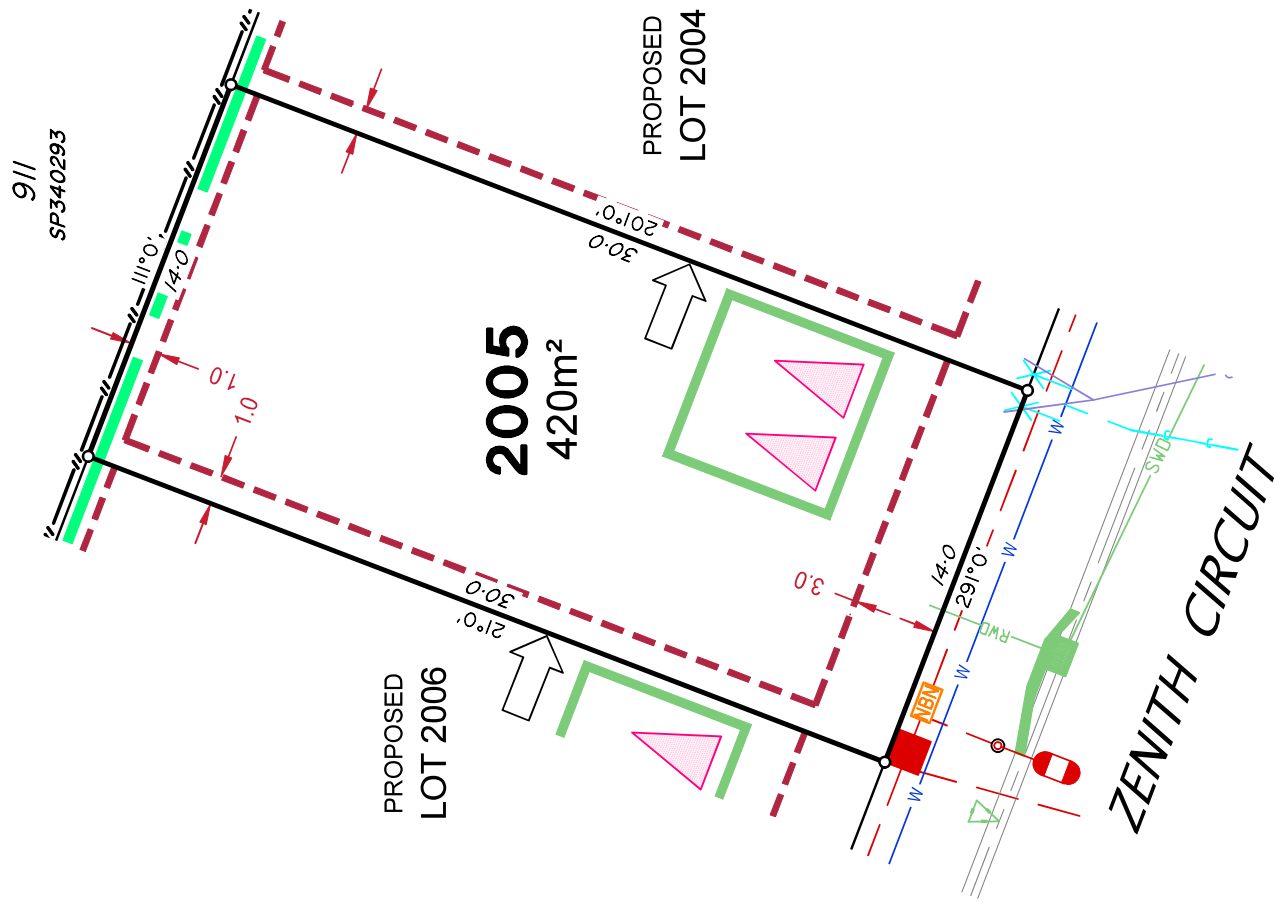
Plot Date: 09 May, 2024

Computer File Ref: 30109-S16S-SP-(A).dwg



LEGEND

- Rock Retaining Wall shown as:-
- Sleeper Retaining Wall shown as:-
- Landscape Retaining Wall shown as:-
- Sewer line
- Sewer Manhole
- Roofwater Drainage line and Catch Pit
- Stormwater Drainage Line
- Stormwater Manhole
- Stormwater Pit
- Water Main
- Water Conduit
- Water Service Point of Entry
- Underground Electricity, Street Light, Electricity Pillar & NBN
- Developer Fencing
- Concrete Pathway
- Zero Setback Building Line
- Landscape Street Tree
- Indicative Building Envelope
- Bin Pads
- Indicative Parking Access Location



ADDITIONAL NOTES:

Allotments used as Multiple Residential Allotments in accordance with the approved Plan of Development may have a reduced primary road setback to 3.0metres as noted on the Plan of Development Table.

Compaction of any fill material placed on this site shall be completed to level one inspection and testing services in accordance with AS3798-2007.

Location of sewer, roofwater, stormwater, water reticulation and electricity lines, manholes and pits are those shown on engineering design drawings, supplied by Peak Urban and may differ from the as-constructed location.

Plan of Development information Supplied by RPS Group PLC.

Copyright © Veris Australia Pty Ltd
May 2024

Plot Date: 09 May, 2024
 Computer File Ref: 30109-S55-SP-(A).dwg

LEGEND

- Rock Retaining Wall shown as: [Blue line]
- Sleeper Retaining Wall shown as: [Green line]
- Landscape Retaining Wall shown as: [Pink line]
- Sewer line: [Blue line with 'S']
- Sewer Manhole: [Orange circle]
- Roofwater Drainage line and Catch Pit: [Green line with 'RWD']
- Stormwater Drainage Line: [Green line with 'SWD']
- Stormwater Manhole: [Green circle]
- Stormwater Pit: [Green circle]
- Water Main: [Blue line with 'W']
- Water Conduit: [Blue line with 'C']
- Water Service Point of Entry: [Blue line with 'W']
- Underground Electricity, Street Light, Electricity Pillar & NBN: [Red line with 'E', 'NBN', 'E']
- Developer Fencing: [Black dashed line]
- Concrete Pathway: [Grey textured rectangle]
- Landscape Street Tree: [Circle with star]
- Zero Setback Building Line: [Red dashed line]
- Indicative Building Envelope: [Red dashed rectangle]
- Bin Pads: [Purple asterisk]
- Indicative Parking Access Location: [Green triangle]

ADDITIONAL NOTES:

Allotments used as Multiple Residential Allotments in accordance with the approved Plan of Development may have a reduced primary road setback to 3.0metres as noted on the Plan of Development Table.

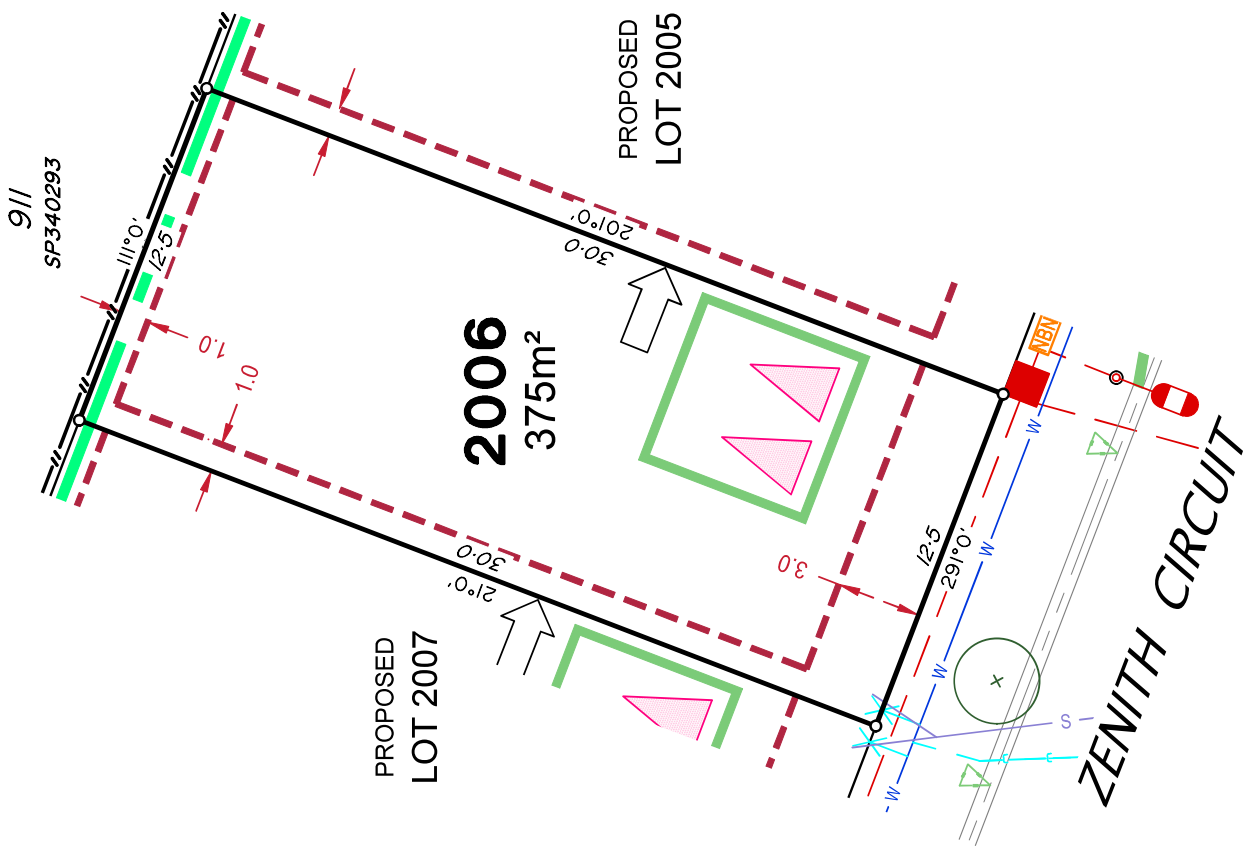
Compaction of any fill material placed on this site shall be completed to level one inspection and testing services in accordance with AS3798-2007.

Location of sewer, roofwater, stormwater, water reticulation and electricity lines, manholes and pits are those shown on engineering design drawings, supplied by Peak Urban and may differ from the as-constructed location.

Plan of Development information Supplied by RPS Group PLC.

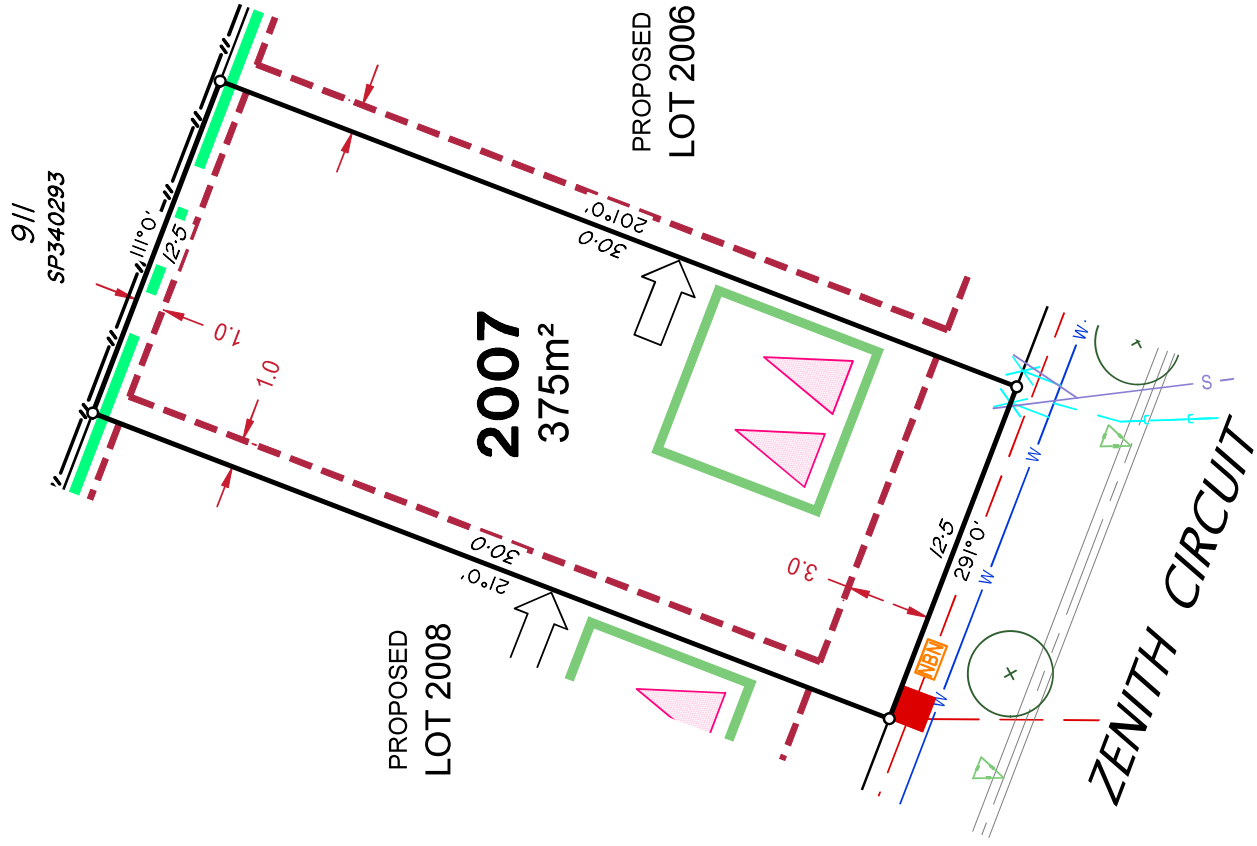
Copyright © Veris Australia Pty Ltd
May 2024

Plot Date: 09 May, 2024
 Computer File Ref: 30109-SIS-SP-(A).dwg



LEGEND

- Rock Retaining Wall shown as:- [Blue line]
- Sleeper Retaining Wall shown as:- [Green line]
- Landscape Retaining Wall shown as:- [Pink line]
- Sewer line [Blue line with 'S']
- Sewer Manhole [Orange circle]
- Roofwater Drainage line and Catch Pit [Green line with 'RWD']
- Stormwater Drainage Line [Green line with 'SWD']
- Stormwater Manhole [Green circle]
- Stormwater Pit [Green circle]
- Water Main [Blue line with 'W']
- Water Conduit [Blue line with 'C']
- Water Service Point of Entry [Blue line with 'X']
- Underground Electricity, Street Light, Electricity Pillar & NBN [Red line with 'E', 'NBN', 'E']
- Developer Fencing [Black dashed line]
- Concrete Pathway [Grey rectangle]
- Zero Setback Building Line [White arrow]
- Landscape Street Tree [Circle with star]
- Indicative Building Envelope [Red dashed rectangle]
- Bin Pads [Purple asterisk]
- Indicative Parking Access Location [Green triangle]



ADDITIONAL NOTES:

Allotments used as Multiple Residential Allotments in accordance with the approved Plan of Development may have a reduced primary road setback to 3.0metres as noted on the Plan of Development Table.

Compaction of any fill material placed on this site shall be completed to level one inspection and testing services in accordance with AS3798-2007.

Location of sewer, roofwater, stormwater, water reticulation and electricity lines, manholes and pits are those shown on engineering design drawings, supplied by Peak Urban and may differ from the as-constructed location.

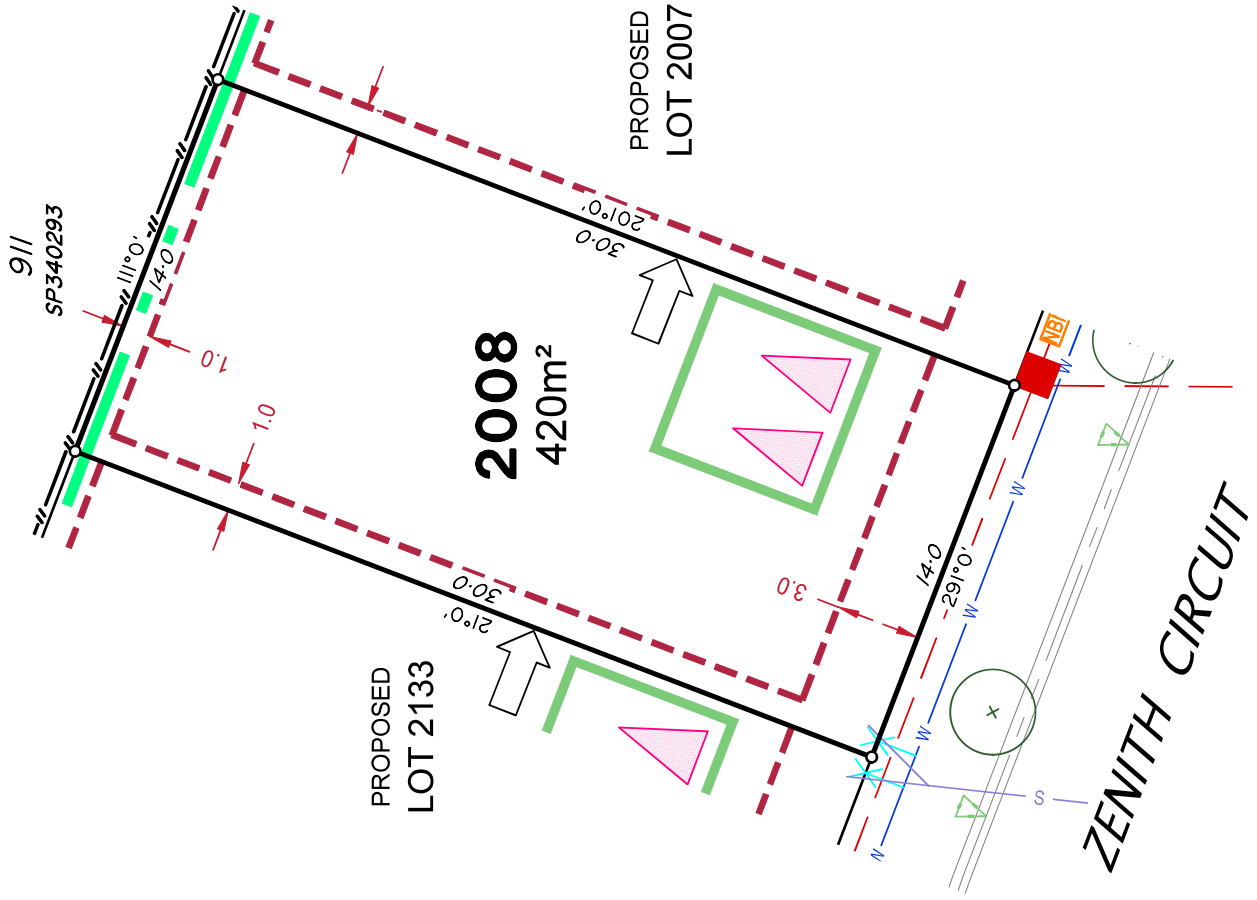
Plan of Development information Supplied by RPS Group PLC.

Copyright © Veris Australia Pty Ltd
May 2024

Plot Date: 09 May, 2024
 Computer File Ref: 30105-S15S-SP-(A).dwg

LEGEND

- Rock Retaining Wall shown as:- [Blue line]
- Sleeper Retaining Wall shown as:- [Green line]
- Landscape Retaining Wall shown as:- [Pink line]
- Sewer line [S - S]
- Sewer Manhole [Orange circle]
- Roofwater Drainage line and Catch Pit [RWD - Green line]
- Stormwater Drainage Line [SWD - Green line]
- Stormwater Manhole [Green circle]
- Stormwater Pit [Green trapezoid]
- Water Main [W - W]
- Water Conduit [C - C]
- Water Service Point of Entry [X]
- Underground Electricity, Street Light, Electricity Pillar & NBN [NBN - Red line]
- Developer Fencing [Double line]
- Concrete Pathway [Stippled rectangle]
- Landscape Street Tree [Circle with star]
- Zero Setback Building Line [Dashed red line]
- Indicative Building Envelope [Dashed red rectangle]
- Bin Pads [Purple star]
- Indicative Parking Access Location [Green triangle]



ADDITIONAL NOTES:

Allotments used as Multiple Residential Allotments in accordance with the approved Plan of Development may have a reduced primary road setback to 3.0metres as noted on the Plan of Development Table.

Compaction of any fill material placed on this site shall be completed to level one inspection and testing services in accordance with AS3798-2007.

Location of sewer, roofwater, stormwater, water reticulation and electricity lines, manholes and pits are those shown on engineering design drawings, supplied by Peak Urban and may differ from the as-constructed location.

Plan of Development information Supplied by RPS Group PLC.

Copyright © Veris Australia Pty Ltd
May 2024

Plot Date: 09 May, 2024
 Computer File Ref: 30109-SIS-SP-(A).dwg

LEGEND

- Rock Retaining Wall shown as:
- Sleeper Retaining Wall shown as:
- Landscape Retaining Wall shown as:
- Sewer line:
- Sewer Manhole:
- Roofwater Drainage line and Catch Pit:
- Stormwater Drainage Line:
- Stormwater Manhole:
- Stormwater Pit:
- Water Main:
- Water Conduit:
- Water Service Point of Entry:
- Underground Electricity, Street Light, Electricity Pillar & NBN:
- Developer Fencing:
- Concrete Pathway:
- Landscape Street Tree:
- Indicative Building Envelope:
- Bin Pads:
- Indicative Parking Access Location:

ADDITIONAL NOTES:

Allotments used as Multiple Residential Allotments in accordance with the approved Plan of Development may have a reduced primary road setback to 3.0metres as noted on the Plan of Development Table.

Compaction of any fill material placed on this site shall be completed to level one inspection and testing services in accordance with AS3798-2007.

Location of sewer, roofwater, stormwater, water reticulation and electricity lines, manholes and pits are those shown on engineering design drawings, supplied by Peak Urban and may differ from the as-constructed location.

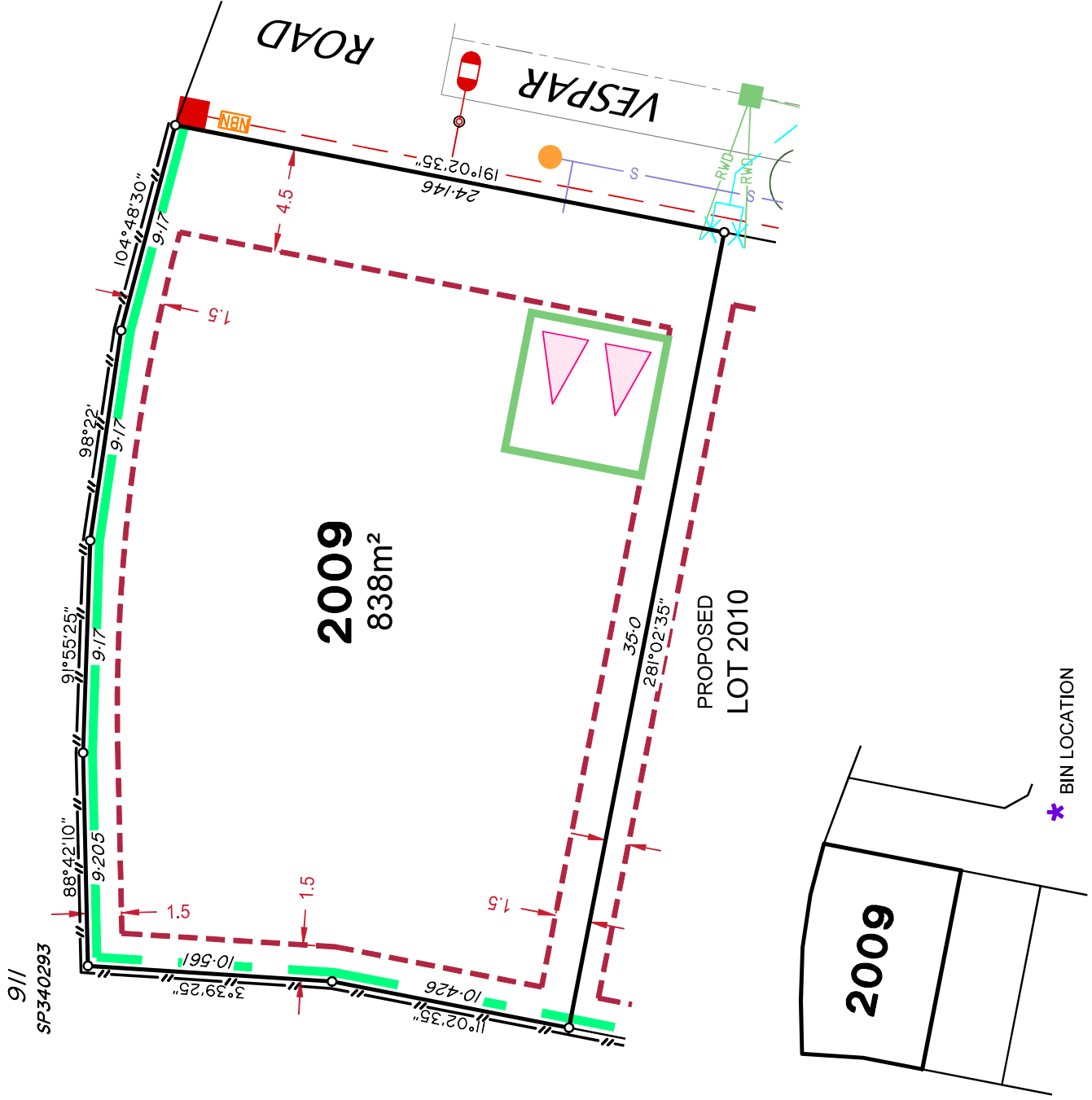
Plan of Development information Supplied by RPS Group PLC.

Copyright © Veris Australia Pty Ltd

May 2024

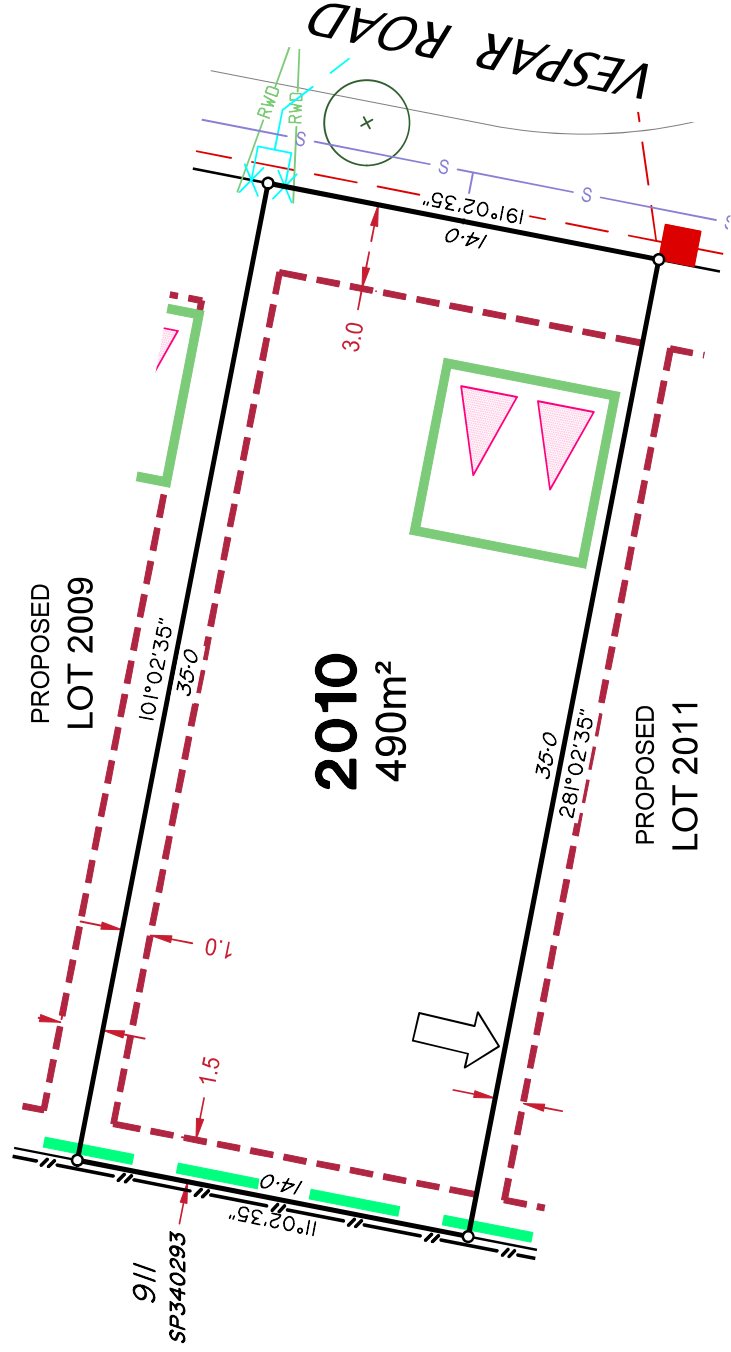
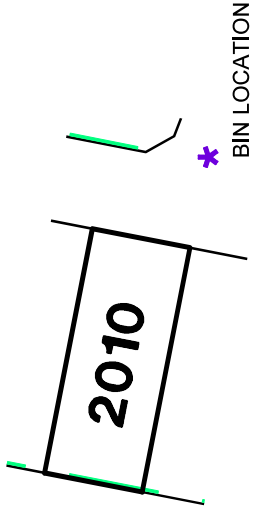
Plot Date: 09 May, 2024

Computer File Ref: 30109-Si6S-SP-(A).dwg



LEGEND

- Rock Retaining Wall shown as:-
- Sleeper Retaining Wall shown as:-
- Landscape Retaining Wall shown as:-
- Sewer line
- Sewer Manhole
- Roofwater Drainage line and Catch Pit
- Stormwater Drainage Line
- Stormwater Manhole
- Stormwater Pit
- Water Main
- Water Conduit
- Water Service Point of Entry
- Underground Electricity, Street Light, Electricity Pillar & NBN
- Developer Fencing
- Concrete Pathway
- Landscape Street Tree
- Zero Setback Building Line
- Indicative Building Envelope
- Bin Pads
- Indicative Parking Access Location



ADDITIONAL NOTES:

Allotments used as Multiple Residential Allotments in accordance with the approved Plan of Development may have a reduced primary road setback to 3.0metres as noted on the Plan of Development Table.

Compaction of any fill material placed on this site shall be completed to level one inspection and testing services in accordance with AS3798-2007.

Location of sewer, roofwater, stormwater, water reticulation and electricity lines, manholes and pits are those shown on engineering design drawings, supplied by Peak Urban and may differ from the as-constructed location.

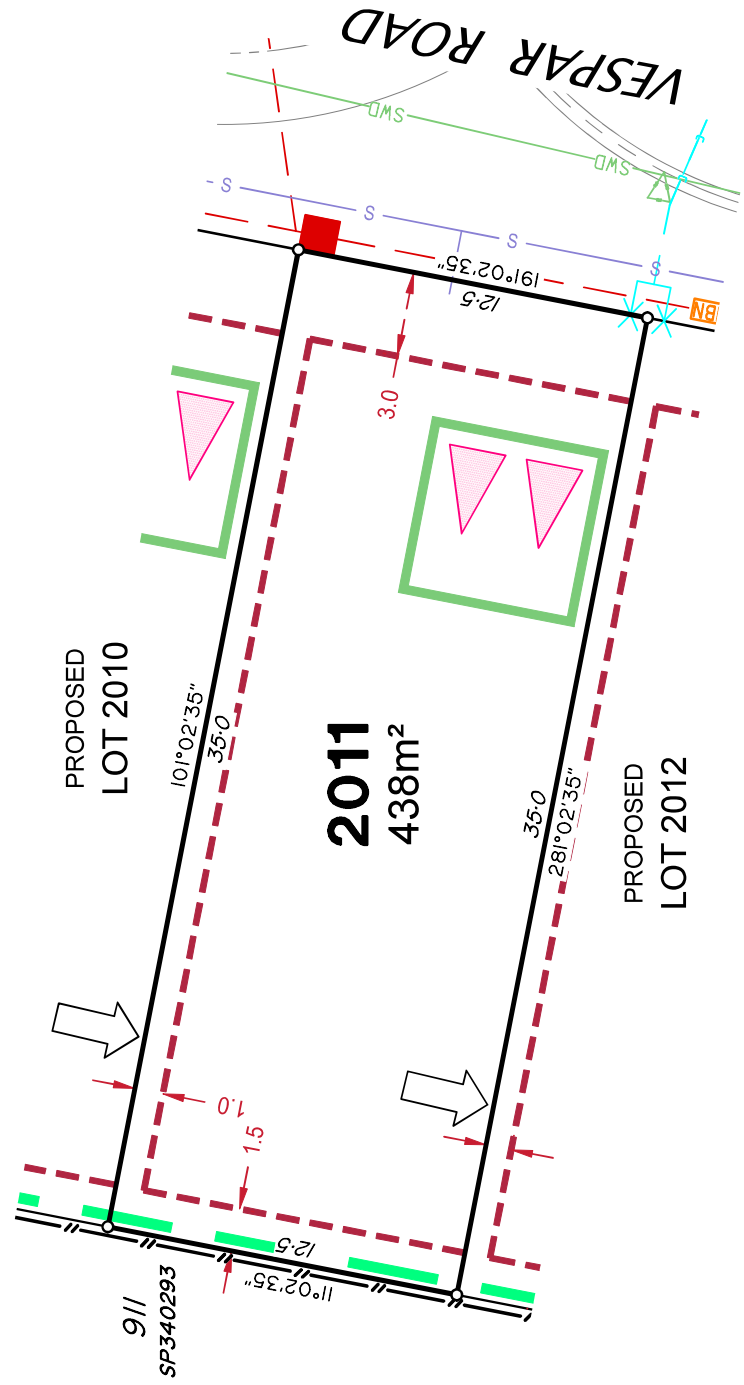
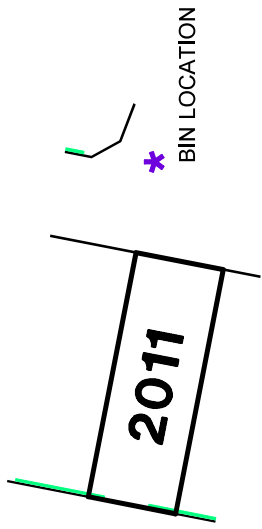
Plan of Development information Supplied by RPS Group PLC.

Copyright © Veris Australia Pty Ltd
May 2024

Plot Date: 09 May, 2024
 Computer File Ref: 30109-St6S-SP-(A).dwg

LEGEND

- Rock Retaining Wall shown as:-
- Sleeper Retaining Wall shown as:-
- Landscape Retaining Wall shown as:-
- Sewer line
- Sewer Manhole
- Roofwater Drainage line and Catch Pit
- Stormwater Drainage Line
- Stormwater Manhole
- Stormwater Pit
- Water Main
- Water Conduit
- Water Service Point of Entry
- Underground Electricity, Street Light, Electricity Pillar & NBN
- Developer Fencing
- Concrete Pathway
- Zero Setback Building Line
- Bin Pads
- Indicative Parking Access Location
- Landscape Street Tree
- Indicative Building Envelope



ADDITIONAL NOTES:

Allotments used as Multiple Residential Allotments in accordance with the approved Plan of Development may have a reduced primary road setback to 3.0metres as noted on the Plan of Development Table.

Compaction of any fill material placed on this site shall be completed to level one inspection and testing services in accordance with AS3798-2007.

Location of sewer, roofwater, stormwater, water reticulation and electricity lines, manholes and pits are those shown on engineering design drawings, supplied by Peak Urban and may differ from the as-constructed location.

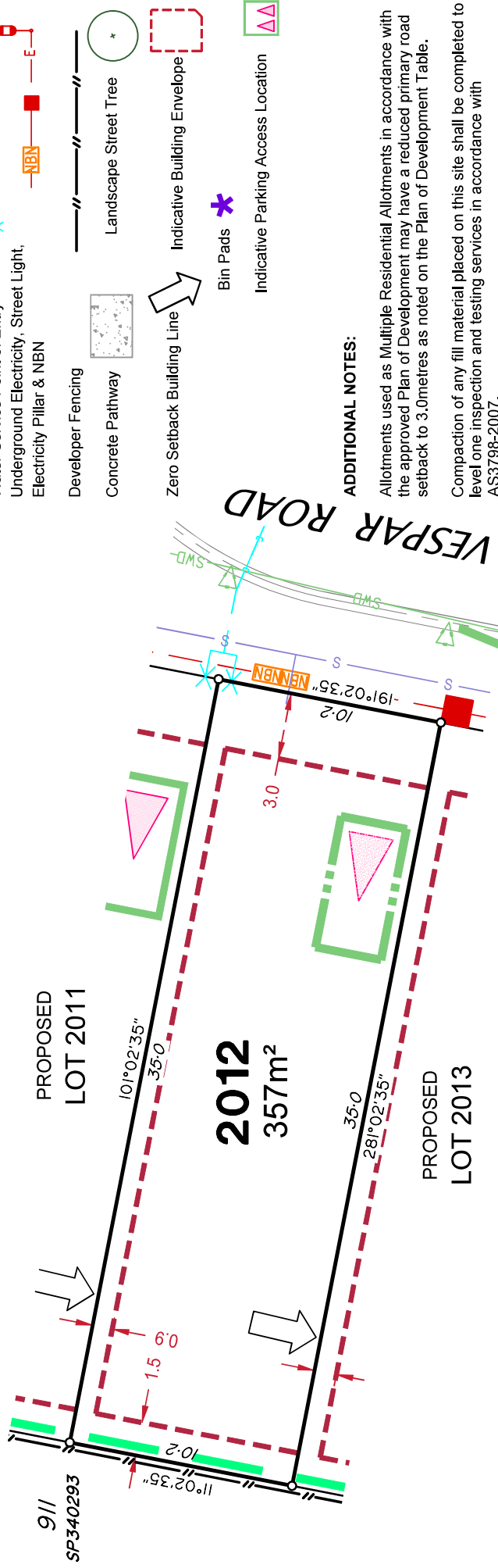
Plan of Development information Supplied by RPS Group PLC.

Copyright © Veris Australia Pty Ltd
May 2024

Plot Date: 09 May, 2024
 Computer File Ref: 30109-SIFS-SP-(A).dwg

LEGEND

- Rock Retaining Wall shown as:-
- Sleeper Retaining Wall shown as:-
- Landscape Retaining Wall shown as:-
- Sewer line
- Sewer Manhole
- Roofwater Drainage line and Catch Pit
- Stormwater Drainage Line
- Stormwater Manhole
- Stormwater Pit
- Water Main
- Water Conduit
- Water Service Point of Entry
- Underground Electricity, Street Light, Electricity Pillar & NBN
- Developer Fencing
- Concrete Pathway
- Landscape Street Tree



ADDITIONAL NOTES:

Allotments used as Multiple Residential Allotments in accordance with the approved Plan of Development may have a reduced primary road setback to 3.0metres as noted on the Plan of Development Table.

Compaction of any fill material placed on this site shall be completed to level one inspection and testing services in accordance with AS3798-2007.

Location of sewer, roofwater, stormwater, water reticulation and electricity lines, manholes and pits are those shown on engineering design drawings, supplied by Peak Urban and may differ from the as-constructed location.

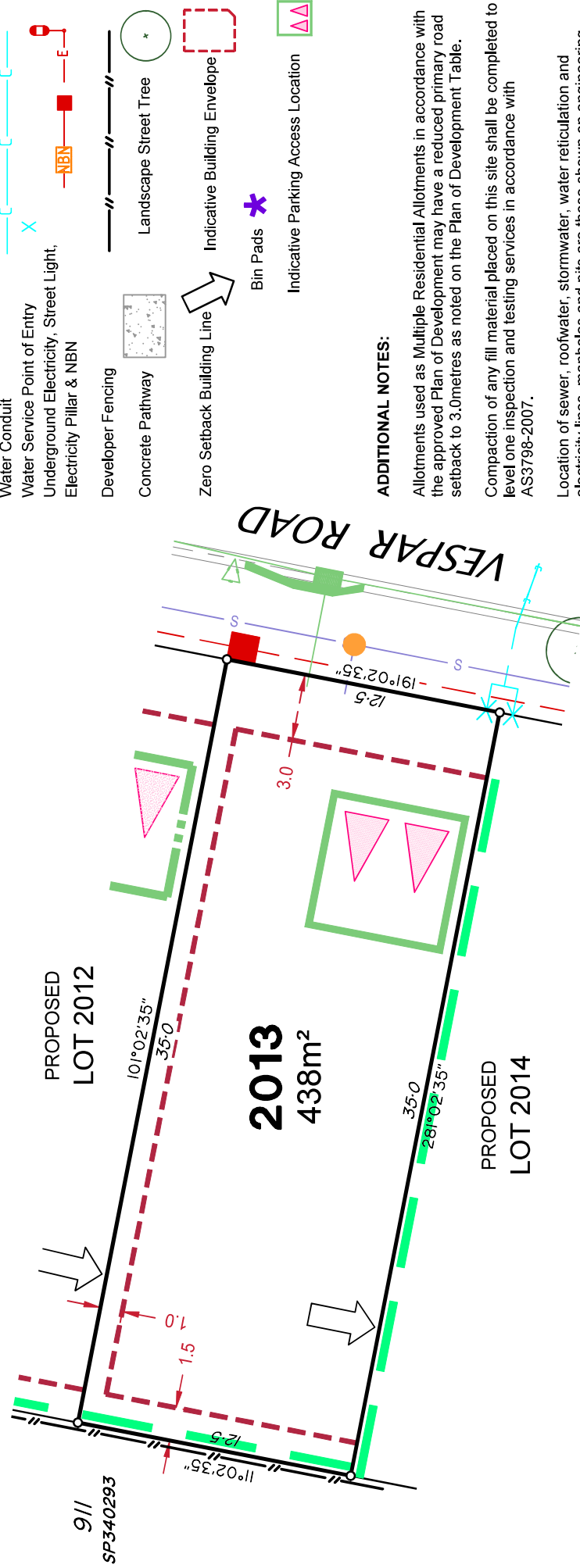
Plan of Development information Supplied by RPS Group PLC.

Copyright © Veris Australia Pty Ltd
May 2024

Plot Date: 09 May, 2024
 Computer File Ref: 30109-S6S-SP-(A).dwg

LEGEND

- Rock Retaining Wall shown as:- [Blue line]
- Sleeper Retaining Wall shown as:- [Green line]
- Landscape Retaining Wall shown as:- [Pink line]
- Sewer line [Blue line with 'S']
- Sewer Manhole [Orange circle]
- Roofwater Drainage line and Catch Pit [Green line with 'RWD']
- Stormwater Drainage Line [Green line with 'SWD']
- Stormwater Manhole [Green circle]
- Stormwater Pit [Green circle]
- Water Main [Blue line with 'W']
- Water Conduit [Blue line with 'C']
- Water Service Point of Entry [Blue line with 'X']
- Underground Electricity, Street Light, Electricity Pillar & NBN [Red line with 'E', 'NBN', 'E']
- Developer Fencing [Black line with double slashes]
- Concrete Pathway [Grey stippled area]
- Landscape Street Tree [Circle with star]
- Zero Setback Building Line [Red dashed line]
- Indicative Building Envelope [Red dashed line]
- Bin Pads [Purple asterisk]
- Indicative Parking Access Location [Green triangle]



ADDITIONAL NOTES:

Allotments used as Multiple Residential Allotments in accordance with the approved Plan of Development may have a reduced primary road setback to 3.0metres as noted on the Plan of Development Table.

Compaction of any fill material placed on this site shall be completed to level one inspection and testing services in accordance with AS3798-2007.

Location of sewer, roofwater, stormwater, water reticulation and electricity lines, manholes and pits are those shown on engineering design drawings, supplied by Peak Urban and may differ from the as-constructed location.

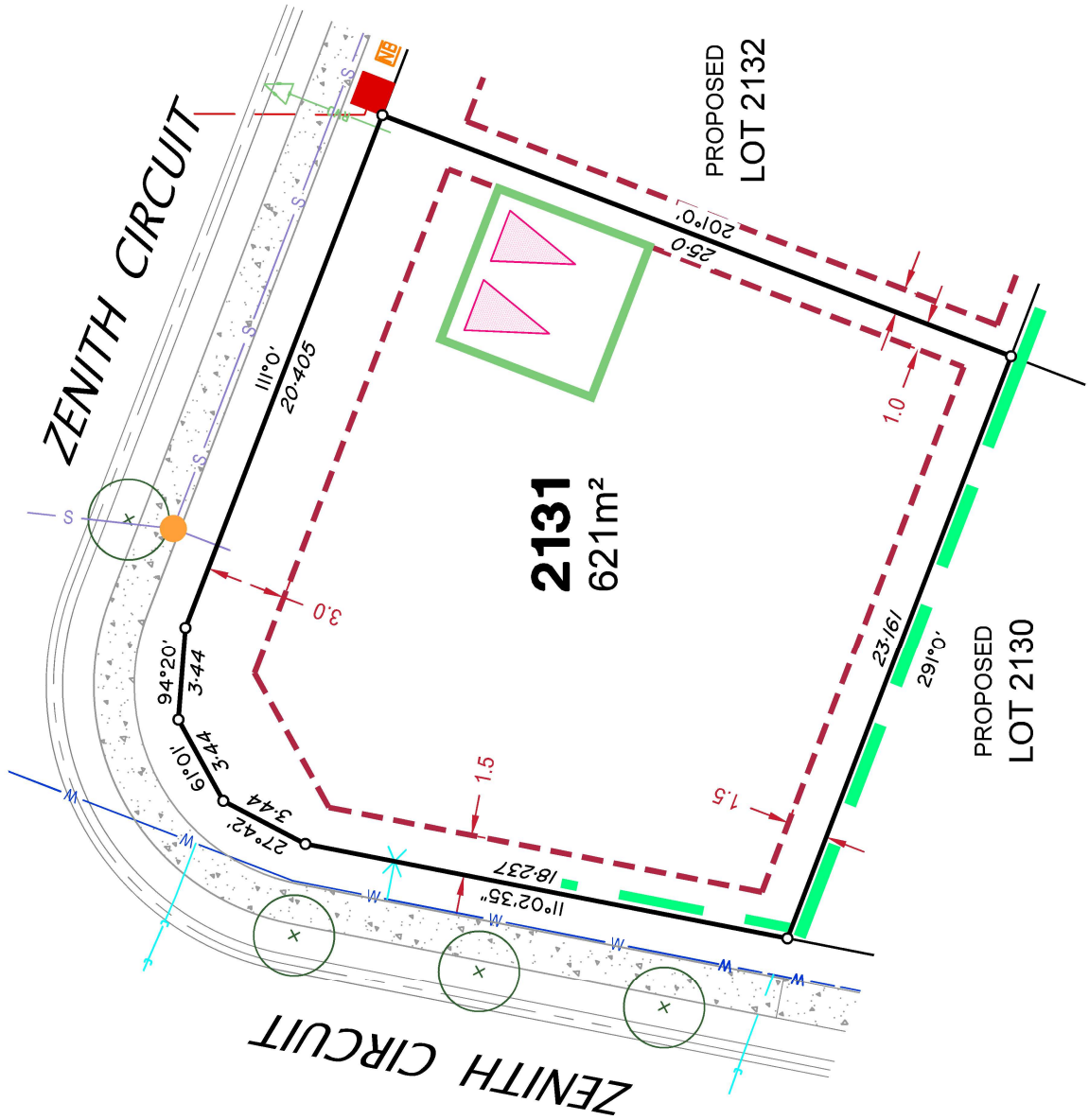
Plan of Development information Supplied by RPS Group PLC.

Copyright © Veris Australia Pty Ltd
May 2024

Plot Date: 09 May, 2024
 Computer File Ref: 30109-St6S-SP-(A).dwg

LEGEND

- Rock Retaining Wall shown as:-
- Sleeper Retaining Wall shown as:-
- Landscape Retaining Wall shown as:-
- Sewer line
- Sewer Manhole
- Roofwater Drainage line and Catch Pit
- Stormwater Drainage Line
- Stormwater Manhole
- Stormwater Pit
- Water Main
- Water Conduit
- Water Service Point of Entry
- Underground Electricity, Street Light, Electricity Pillar & NBN
- Developer Fencing
- Concrete Pathway
- Zero Setback Building Line
- Indicative Building Envelope
- Bin Pads
- Indicative Parking Access Location
- Landscape Street Tree



ADDITIONAL NOTES:

Allotments used as Multiple Residential Allotments in accordance with the approved Plan of Development may have a reduced primary road setback to 3.0metres as noted on the Plan of Development Table.

Compaction of any fill material placed on this site shall be completed to level one inspection and testing services in accordance with AS3798-2007.

Location of sewer, roofwater, stormwater, water reticulation and electricity lines, manholes and pits are those shown on engineering design drawings, supplied by Peak Urban and may differ from the as-constructed location.

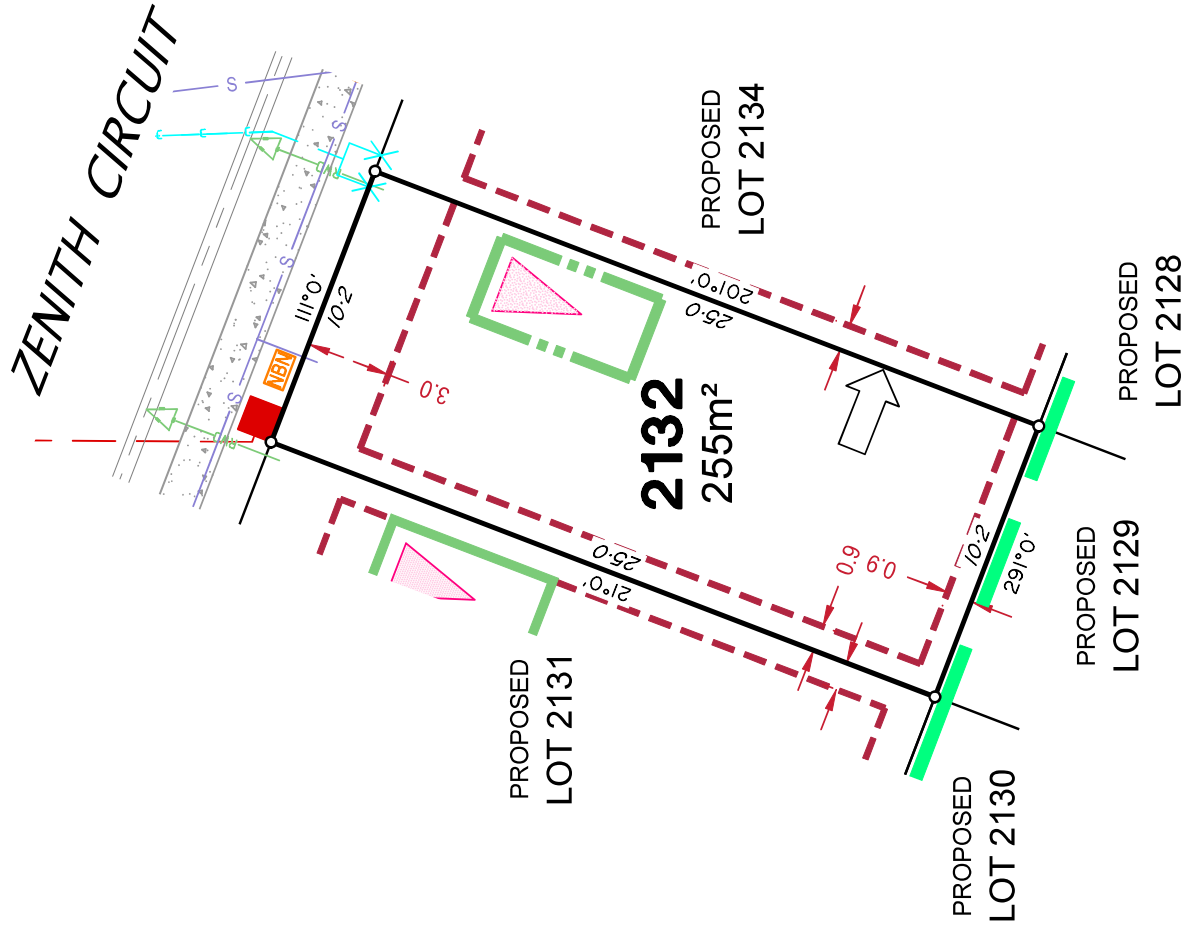
Plan of Development information Supplied by RPS Group PLC.

Copyright © Veris Australia Pty Ltd
May 2024

Plot Date: 09 May, 2024
 Computer File Ref: 30109-StGS-SP-(A).dwg

LEGEND

- Rock Retaining Wall shown as:-
- Sleeper Retaining Wall shown as:-
- Landscape Retaining Wall shown as:-
- Sewer line
- Sewer Manhole
- Roofwater Drainage line and Catch Pit
- Stormwater Drainage Line
- Stormwater Manhole
- Stormwater Pit
- Water Main
- Water Conduit
- Water Service Point of Entry
- Underground Electricity, Street Light, Electricity Pillar & NBN
- Developer Fencing
- Concrete Pathway
- Landscape Street Tree
- Zero Setback Building Line
- Indicative Building Envelope
- Bin Pads
- Indicative Parking Access Location



ADDITIONAL NOTES:

Allotments used as Multiple Residential Allotments in accordance with the approved Plan of Development may have a reduced primary road setback to 3.0metres as noted on the Plan of Development Table.

Compaction of any fill material placed on this site shall be completed to level one inspection and testing services in accordance with AS3798-2007.

Location of sewer, roofwater, stormwater, water reticulation and electricity lines, manholes and pits are those shown on engineering design drawings, supplied by Peak Urban and may differ from the as-constructed location.

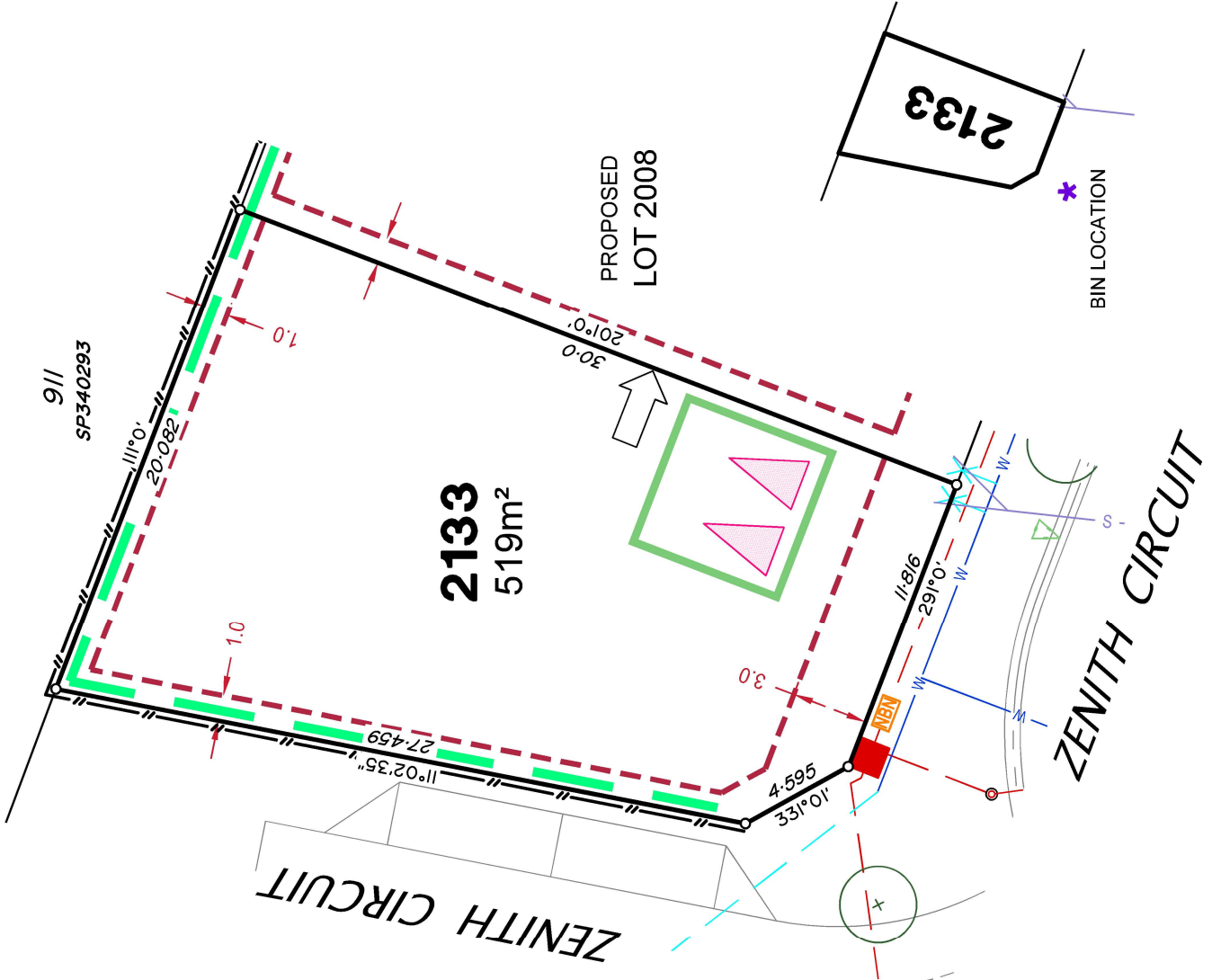
Plan of Development information Supplied by RPS Group PLC.

Copyright © Veris Australia Pty Ltd
May 2024

Plot Date: 09 May, 2024
 Computer File Ref: 30109-S15S-SF-(A).dwg

LEGEND

- Rock Retaining Wall shown as:- [Blue line]
- Sleeper Retaining Wall shown as:- [Green line]
- Landscape Retaining Wall shown as:- [Pink line]
- Sewer line [Blue line with 'S']
- Sewer Manhole [Orange circle]
- Roofwater Drainage line and Catch Pit [Green line with 'RWD']
- Stormwater Drainage Line [Green line with 'SWD']
- Stormwater Manhole [Green circle]
- Stormwater Pit [Green circle]
- Water Main [Blue line with 'W']
- Water Conduit [Cyan line with 'C']
- Water Service Point of Entry [Green 'X']
- Underground Electricity, Street Light, Electricity Pillar & NBN [Red line with 'E', 'NBN', 'E']
- Developer Fencing [Black dashed line]
- Concrete Pathway [Grey rectangle]
- Landscape Street Tree [Circle with star]
- Zero Setback Building Line [Red dashed line]
- Indicative Building Envelope [Red dashed rectangle]
- Bin Pads [Purple asterisk]
- Indicative Parking Access Location [Green triangle]



ADDITIONAL NOTES:

Allotments used as Multiple Residential Allotments in accordance with the approved Plan of Development may have a reduced primary road setback to 3.0metres as noted on the Plan of Development Table.

Compaction of any fill material placed on this site shall be completed to level one inspection and testing services in accordance with AS3798-2007.

Location of sewer, roofwater, stormwater, water reticulation and electricity lines, manholes and pits are those shown on engineering design drawings, supplied by Peak Urban and may differ from the as-constructed location.

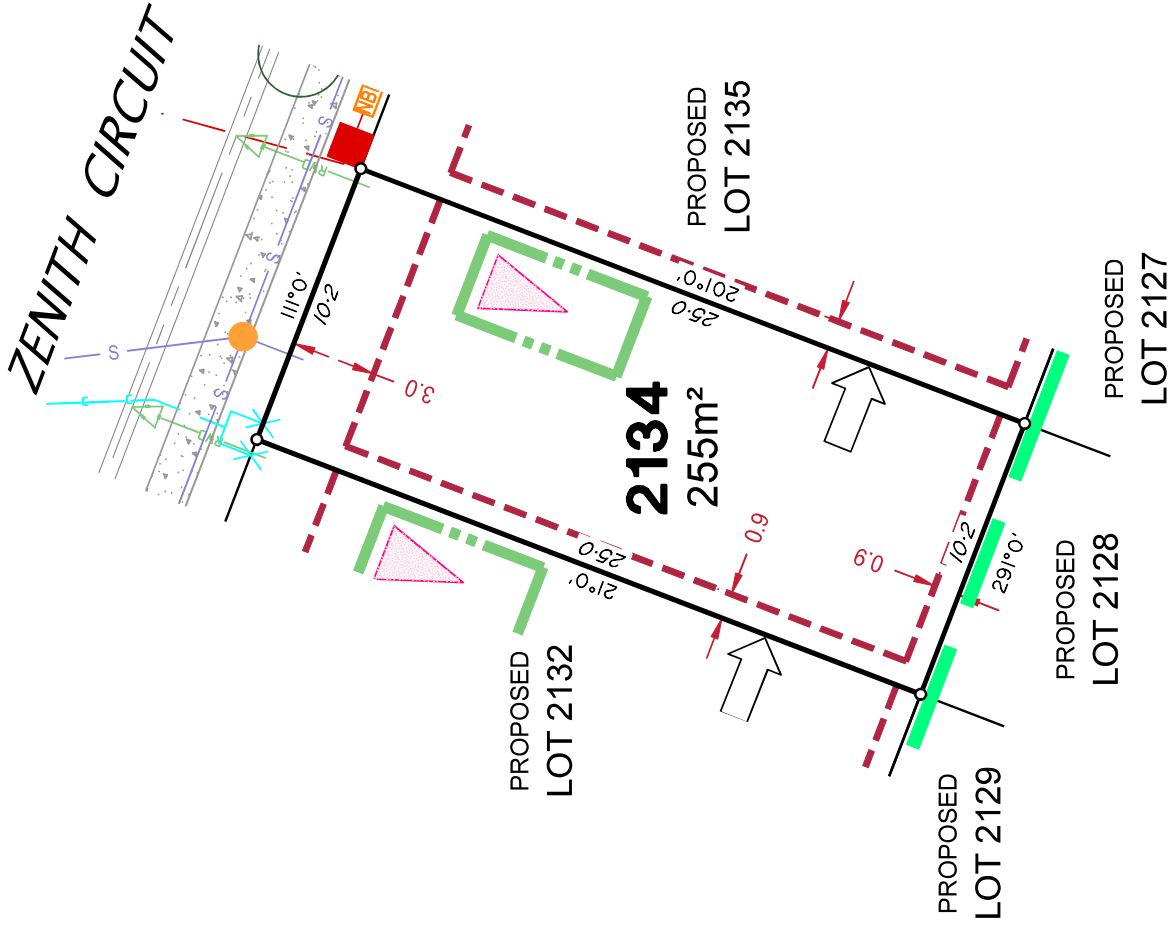
Plan of Development information Supplied by RPS Group PLC.

Copyright © Veris Australia Pty Ltd
May 2024

Plot Date: 09 May, 2024
 Computer File Ref: 30109-S16S-SP-(A).dwg

LEGEND

- Rock Retaining Wall shown as:-
- Sleeper Retaining Wall shown as:-
- Landscape Retaining Wall shown as:-
- Sewer line
- Sewer Manhole
- Roofwater Drainage line and Catch Pit
- Stormwater Drainage Line
- Stormwater Manhole
- Stormwater Pit
- Water Main
- Water Conduit
- Water Service Point of Entry
- Underground Electricity, Street Light, Electricity Pillar & NBN
- Developer Fencing
- Concrete Pathway
- Zero Setback Building Line
- Bin Pads
- Indicative Parking Access Location
- Landscape Street Tree
- Indicative Building Envelope



ADDITIONAL NOTES:

Allotments used as Multiple Residential Allotments in accordance with the approved Plan of Development may have a reduced primary road setback to 3.0metres as noted on the Plan of Development Table.

Compaction of any fill material placed on this site shall be completed to level one inspection and testing services in accordance with AS3798-2007.

Location of sewer, roofwater, stormwater, water reticulation and electricity lines, manholes and pits are those shown on engineering design drawings, supplied by Peak Urban and may differ from the as-constructed location.

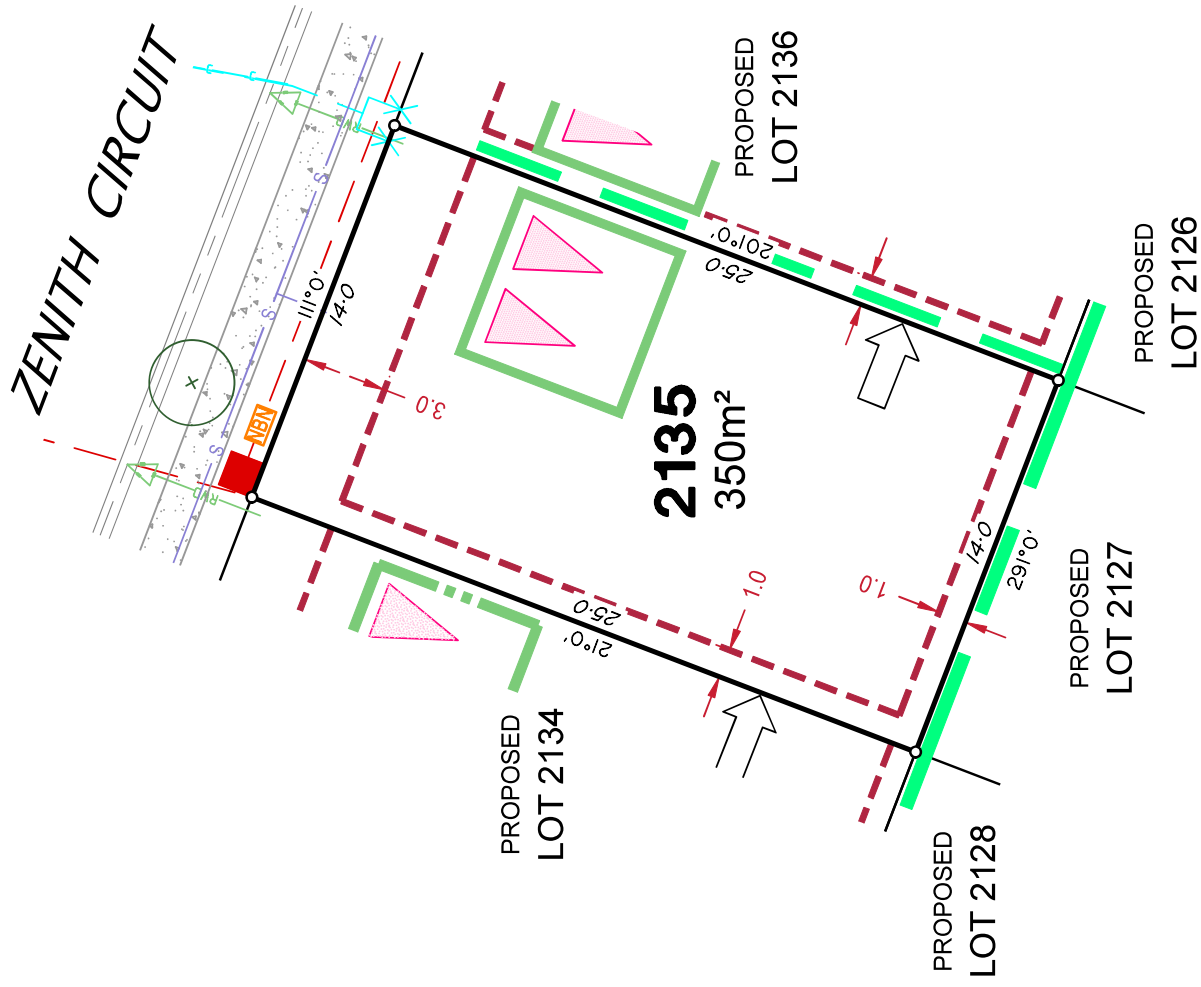
Plan of Development information Supplied by RPS Group PLC.

Copyright © Veris Australia Pty Ltd
May 2024

Plot Date: 09 May, 2024
 Computer File Ref 30109-St6S-SP-(A).dwg

LEGEND

- Rock Retaining Wall shown as:-
- Sleeper Retaining Wall shown as:-
- Landscape Retaining Wall shown as:-
- Sewer line
- Sewer Manhole
- Roofwater Drainage line and Catch Pit
- Stormwater Drainage Line
- Stormwater Manhole
- Stormwater Pit
- Water Main
- Water Conduit
- Water Service Point of Entry
- Underground Electricity, Street Light, Electricity Pillar & NBN
- Developer Fencing
- Concrete Pathway
- Zero Setback Building Line
- Landscape Street Tree
- Bin Pads
- Indicative Building Envelope
- Indicative Parking Access Location



ADDITIONAL NOTES:

Allotments used as Multiple Residential Allotments in accordance with the approved Plan of Development may have a reduced primary road setback to 3.0metres as noted on the Plan of Development Table.

Compaction of any fill material placed on this site shall be completed to level one inspection and testing services in accordance with AS3798-2007.

Location of sewer, roofwater, stormwater, water reticulation and electricity lines, manholes and pits are those shown on engineering design drawings, supplied by Peak Urban and may differ from the as-constructed location.

Plan of Development information Supplied by RPS Group PLC.

Copyright © Veris Australia Pty Ltd
May 2024

Plot Date: 09 May, 2024
 Computer File Ref: 30109-S15S-SP-(A).dwg

LEGEND

- Rock Retaining Wall shown as:-
- Sleeper Retaining Wall shown as:-
- Landscape Retaining Wall shown as:-
- Sewer line
- Sewer Manhole
- Rootwater Drainage line and Catch Pit
- Stormwater Drainage Line
- Stormwater Manhole
- Stormwater Pit
- Water Main
- Water Conduit
- Water Service Point of Entry
- Underground Electricity, Street Light, Electricity Pillar & NBN
- Developer Fencing
- Concrete Pathway
- Zero Setback Building Line
- Landscape Street Tree
- Indicative Building Envelope
- Bin Pads
- Indicative Parking Access Location

ADDITIONAL NOTES:

Allotments used as Multiple Residential Allotments in accordance with the approved Plan of Development may have a reduced primary road setback to 3.0metres as noted on the Plan of Development Table.

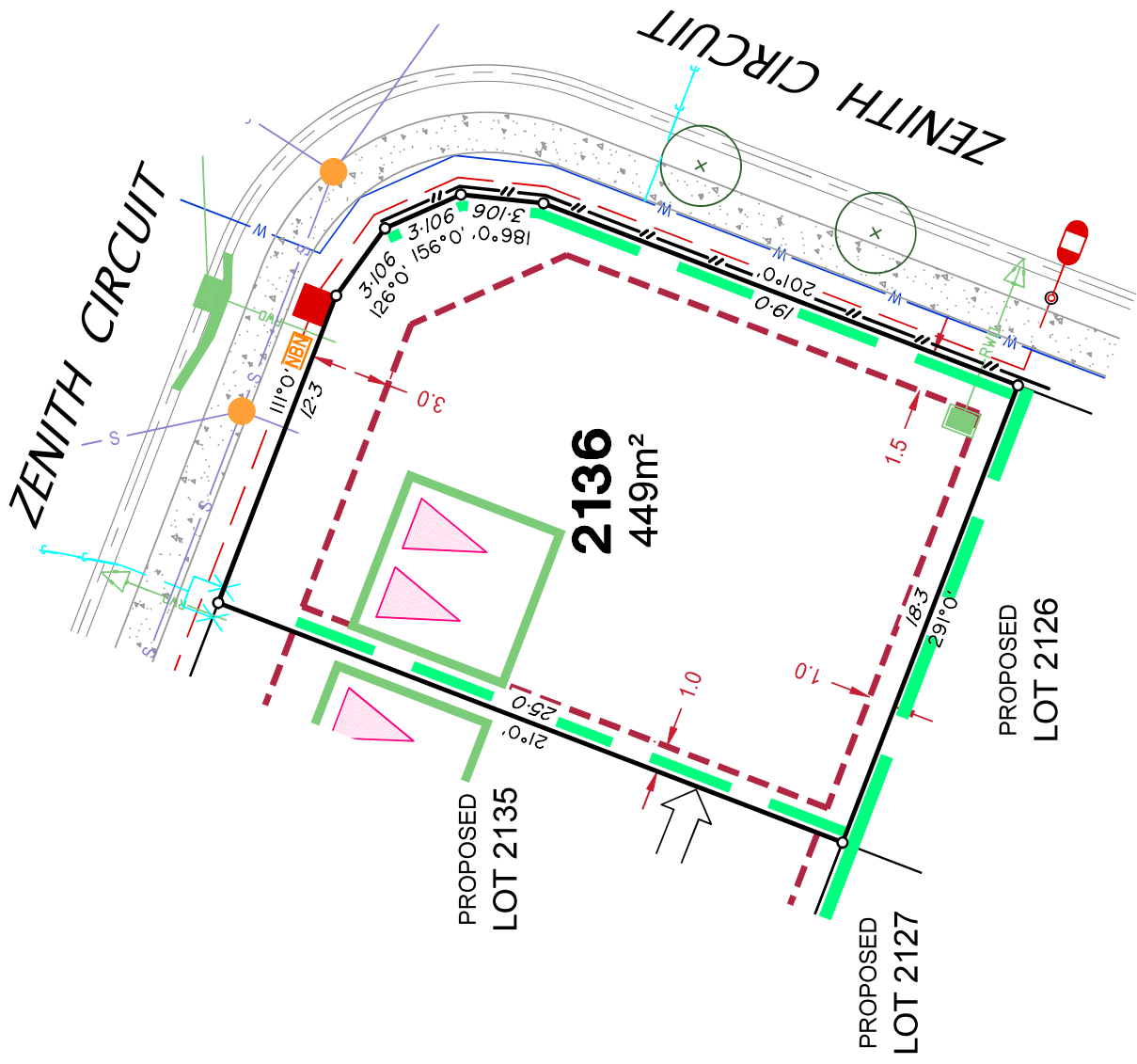
Compaction of any fill material placed on this site shall be completed to level one inspection and testing services in accordance with AS3798-2007.

Location of sewer, roofwater, stormwater, water reticulation and electricity lines, manholes and pits are those shown on engineering design drawings, supplied by Peak Urban and may differ from the as-constructed location.

Plan of Development information Supplied by RPS Group PLC.

Copyright © Veris Australia Pty Ltd
May 2024

Plot Date: 09 May 2024
 Computer File Ref: 30109-S65S-SP-(A).dwg



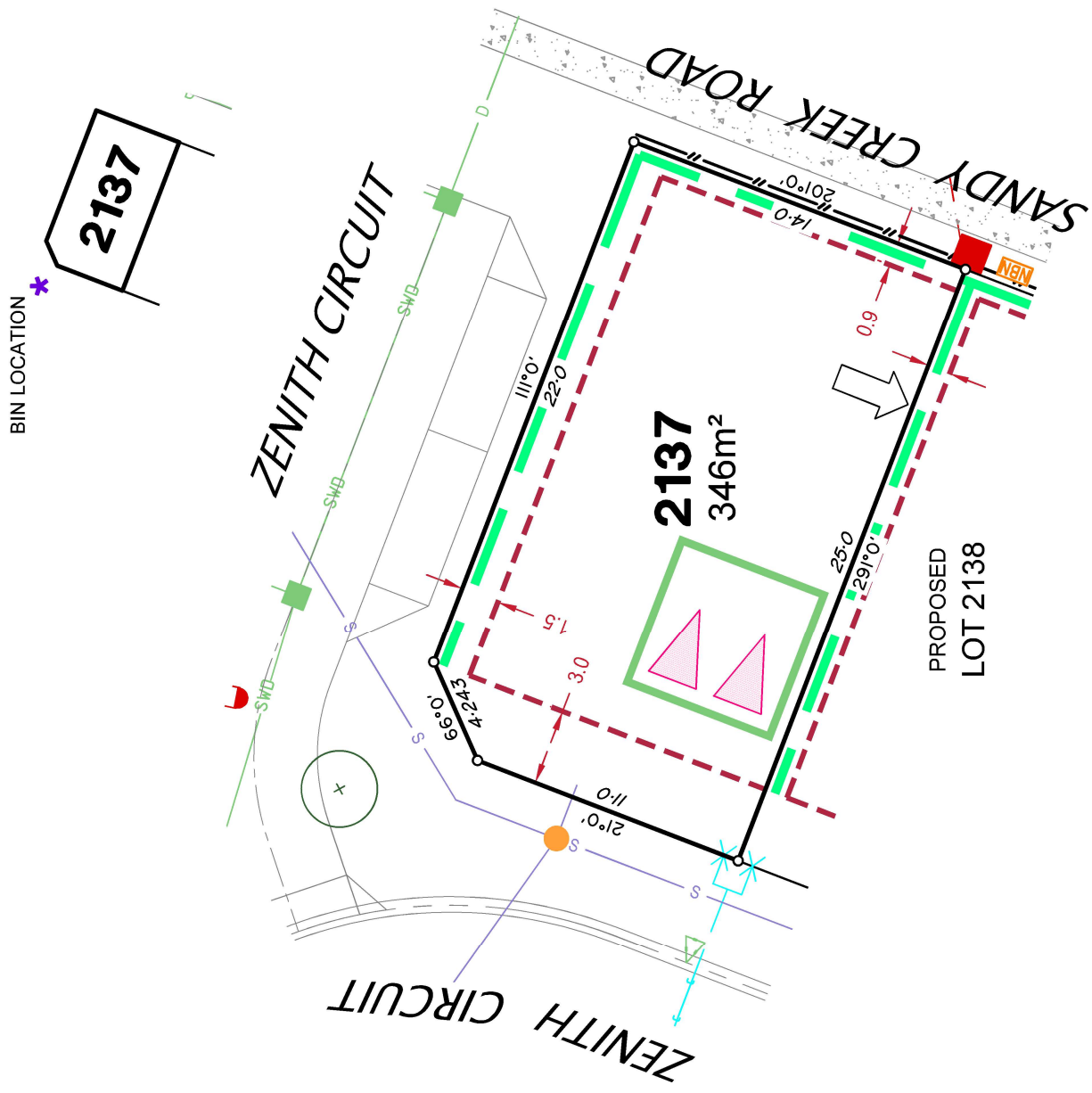
Plan of Development information Supplied by RPS Group PLC.

Copyright © Veris Australia Pty Ltd
May 2024

Plot Date: 09 May 2024
 Computer File Ref: 30109-S65S-SP-(A).dwg

LEGEND

- Rock Retaining Wall shown as:- [Blue line]
- Sleeper Retaining Wall shown as:- [Green line]
- Landscaped Retaining Wall shown as:- [Pink line]
- Sewer line [S line]
- Sewer Manhole [Orange circle]
- Roofwater Drainage line and Catch Pit [RWD line]
- Stormwater Drainage Line [SWD line]
- Stormwater Manhole [Green circle]
- Stormwater Pit [Green trapezoid]
- Water Main [W line]
- Water Conduit [C line]
- Water Service Point of Entry [X symbol]
- Underground Electricity, Street Light, Electricity Pillar & NBN [NBN, E, and Street Light symbols]
- Developer Fencing [Double line]
- Concrete Pathway [Stippled area]
- Landscape Street Tree [Circle with star]
- Zero Setback Building Line [Dashed red line]
- Indicative Building Envelope [Dashed red rectangle]
- Bin Pads [Purple star]
- Indicative Parking Access Location [Green triangle]



ADDITIONAL NOTES:

Allotments used as Multiple Residential Allotments in accordance with the approved Plan of Development may have a reduced primary road setback to 3.0metres as noted on the Plan of Development Table.

Compaction of any fill material placed on this site shall be completed to level one inspection and testing services in accordance with AS3798-2007.

Location of sewer, roofwater, stormwater, water reticulation and electricity lines, manholes and pits are those shown on engineering design drawings, supplied by Peak Urban and may differ from the as-constructed location.

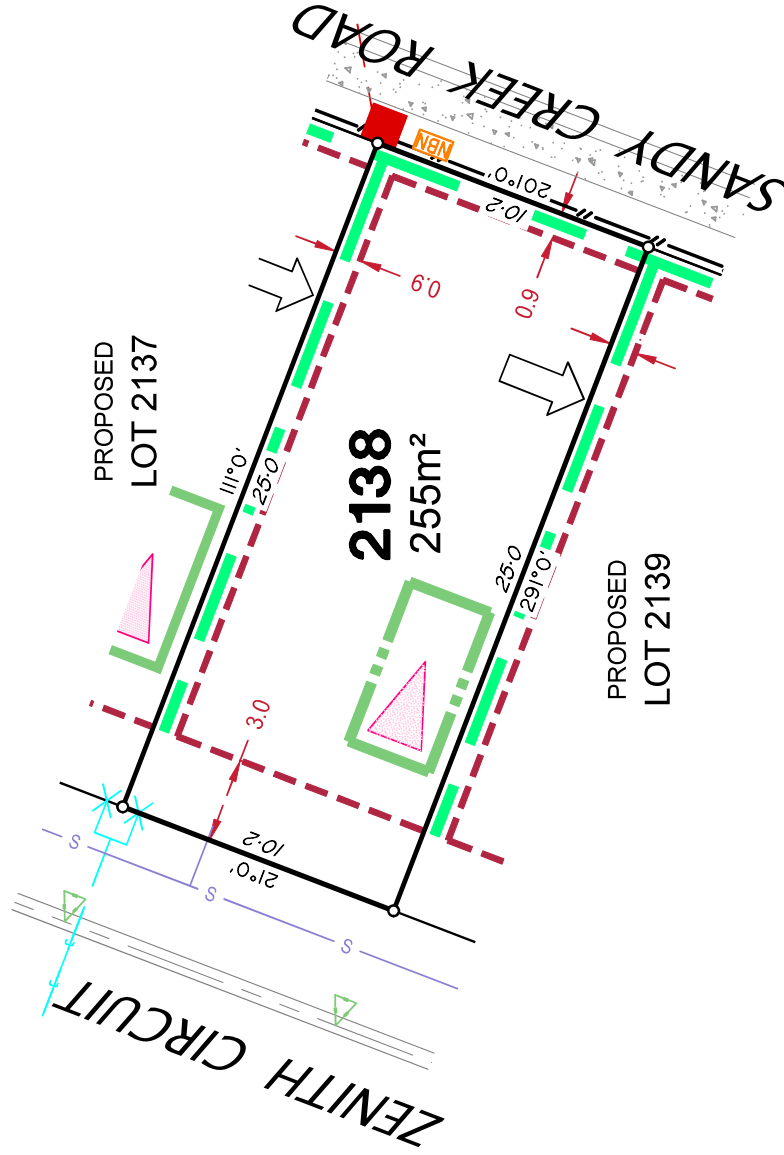
Plan of Development information Supplied by RPS Group PLC.

Copyright © Veris Australia Pty Ltd
May 2024

Plot Date: 09 May, 2024
 Computer File Ref: 30709-StEs-SP-(A).dwg

LEGEND

- Rock Retaining Wall shown as:- [Blue line]
- Sleeper Retaining Wall shown as:- [Green line]
- Landscape Retaining Wall shown as:- [Pink line]
- Sewer line [Line with 'S' and orange circle]
- Roadwater Drainage line and Catch Pit [Line with 'RWD' and green square]
- Stormwater Drainage Line [Line with 'SWD' and green circle]
- Stormwater Manhole [Green circle]
- Stormwater Pit [Green trapezoid]
- Water Main [Line with 'W' and blue circle]
- Water Conduit [Line with 'C' and blue circle]
- Water Service Point of Entry [Blue 'X']
- Underground Electricity, Street Light, Electricity Pillar & NBN [Line with 'NBN', 'E', and red symbols]
- Developer Fencing [Line with double slashes]
- Concrete Pathway [Stippled rectangle]
- Landscape Street Tree [Circle with star]
- Zero Setback Building Line [Dashed red line]
- Indicative Building Envelope [Dashed red rectangle]
- Bin Pads [Purple star]
- Indicative Parking Access Location [Green triangle]



ADDITIONAL NOTES:

Allotments used as Multiple Residential Allotments in accordance with the approved Plan of Development may have a reduced primary road setback to 3.0metres as noted on the Plan of Development Table.

Compaction of any fill material placed on this site shall be completed to level one inspection and testing services in accordance with AS3798-2007.

Location of sewer, roofwater, stormwater, water reticulation and electricity lines, manholes and pits are those shown on engineering design drawings, supplied by Peak Urban and may differ from the as-constructed location.

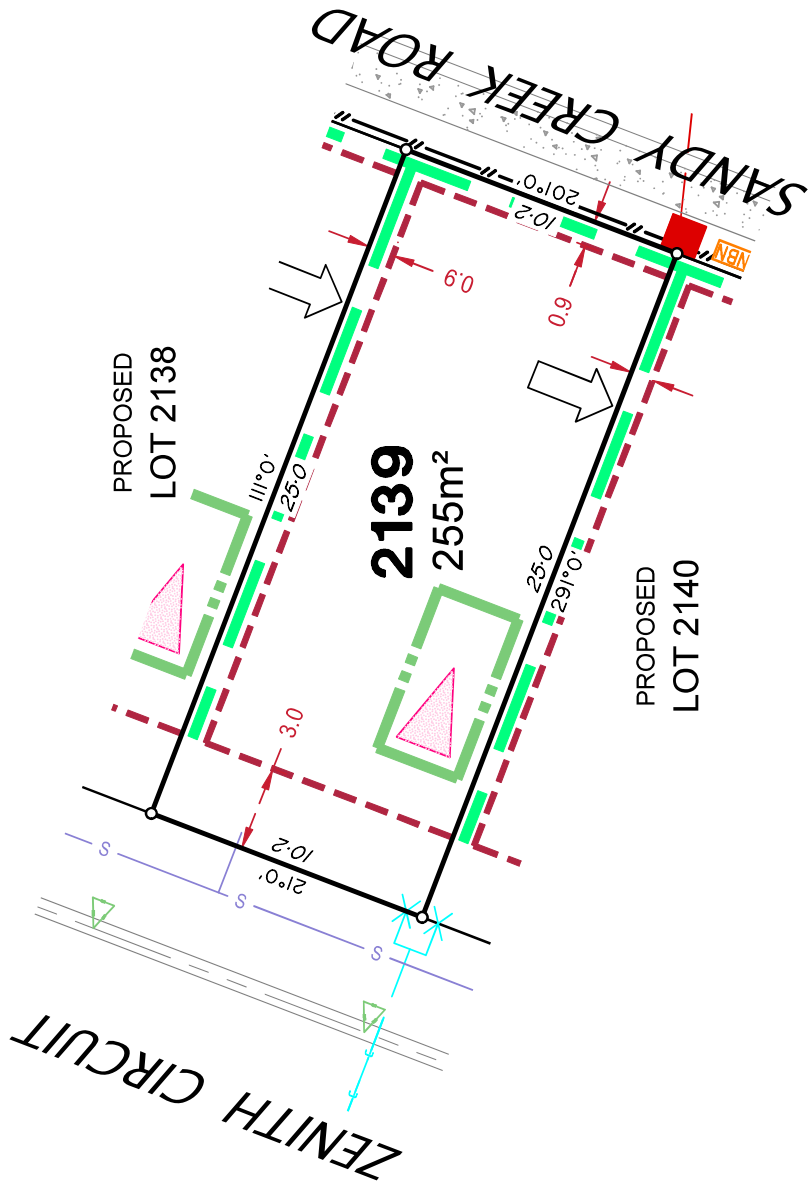
Plan of Development information Supplied by RPS Group PLC.

Copyright © Veris Australia Pty Ltd
May 2024

Plot Date: 09 May, 2024
 Computer File Ref: 30109-St6S-SP-(A).dwg

LEGEND

- Rock Retaining Wall shown as:-
- Sleeper Retaining Wall shown as:-
- Landscape Retaining Wall shown as:-
- Sewer line
- Sewer Manhole
- Roofwater Drainage line and Catch Pit
- Stormwater Drainage Line
- Stormwater Manhole
- Stormwater Pit
- Water Main
- Water Conduit
- Water Service Point of Entry
- Underground Electricity, Street Light, Electricity Pillar & NBN
- Developer Fencing
- Concrete Pathway
- Zero Setback Building Line
- Bin Pads
- Indicative Building Envelope
- Indicative Parking Access Location
- Landscape Street Tree



ADDITIONAL NOTES:

Allotments used as Multiple Residential Allotments in accordance with the approved Plan of Development may have a reduced primary road setback to 3.0metres as noted on the Plan of Development Table.

Compaction of any fill material placed on this site shall be completed to level one inspection and testing services in accordance with AS3798-2007.





















Location of sewer, roofwater, stormwater, stormwater, water reticulation and electricity lines, manholes and pits are those shown on engineering design drawings, supplied by Peak Urban and may differ from the as-constructed location.

Plan of Development information Supplied by RPS Group PLC.

Copyright © Veris Australia Pty Ltd
May 2024

Plot Date: 09 May, 2024
 Computer File Ref: 30109-St5S-SP-(A).dwg

LEGEND

- Rock Retaining Wall shown as:- 
- Sleeper Retaining Wall shown as:- 
- Landscape Retaining Wall shown as:- 
- Sewer line 
- Sewer Manhole 
- Roofwater Drainage line and Catch Pit 
- Stormwater Drainage Line 
- Stormwater Manhole 
- Stormwater Pit 
- Water Main 
- Water Conduit 
- Water Service Point of Entry 
- Underground Electricity, Street Light, Electricity Pillar & NBN 
- Developer Fencing 
- Concrete Pathway 
- Landscape Street Tree 
- Zero Setback Building Line 
- Indicative Building Envelope 
- Bin Pads 
- Indicative Parking Access Location 

ADDITIONAL NOTES:

Allotments used as Multiple Residential Allotments in accordance with the approved Plan of Development may have a reduced primary road setback to 3.0metres as noted on the Plan of Development Table.

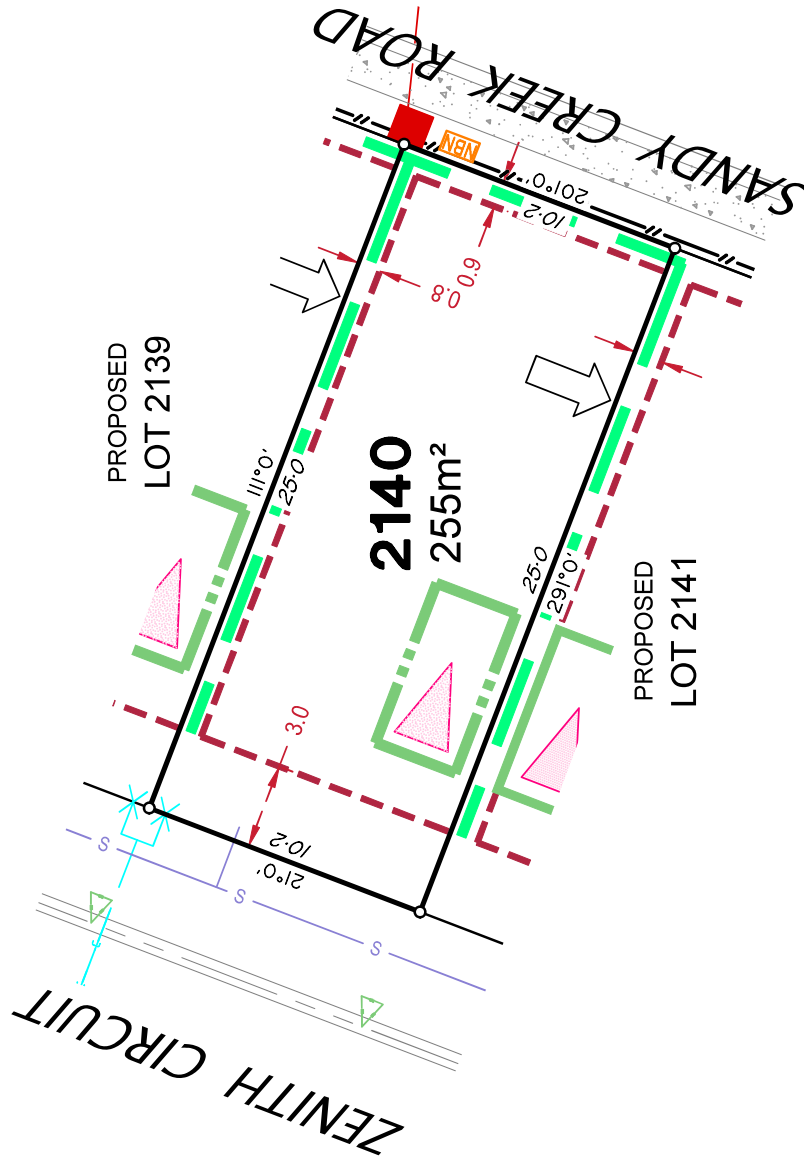
Compaction of any fill material placed on this site shall be completed to level one inspection and testing services in accordance with AS3798-2007.

Location of sewer, roofwater, stormwater, water reticulation and electricity lines, manholes and pits are those shown on engineering design drawings, supplied by Peak Urban and may differ from the as-constructed location.

Plan of Development information Supplied by RPS Group PLC.

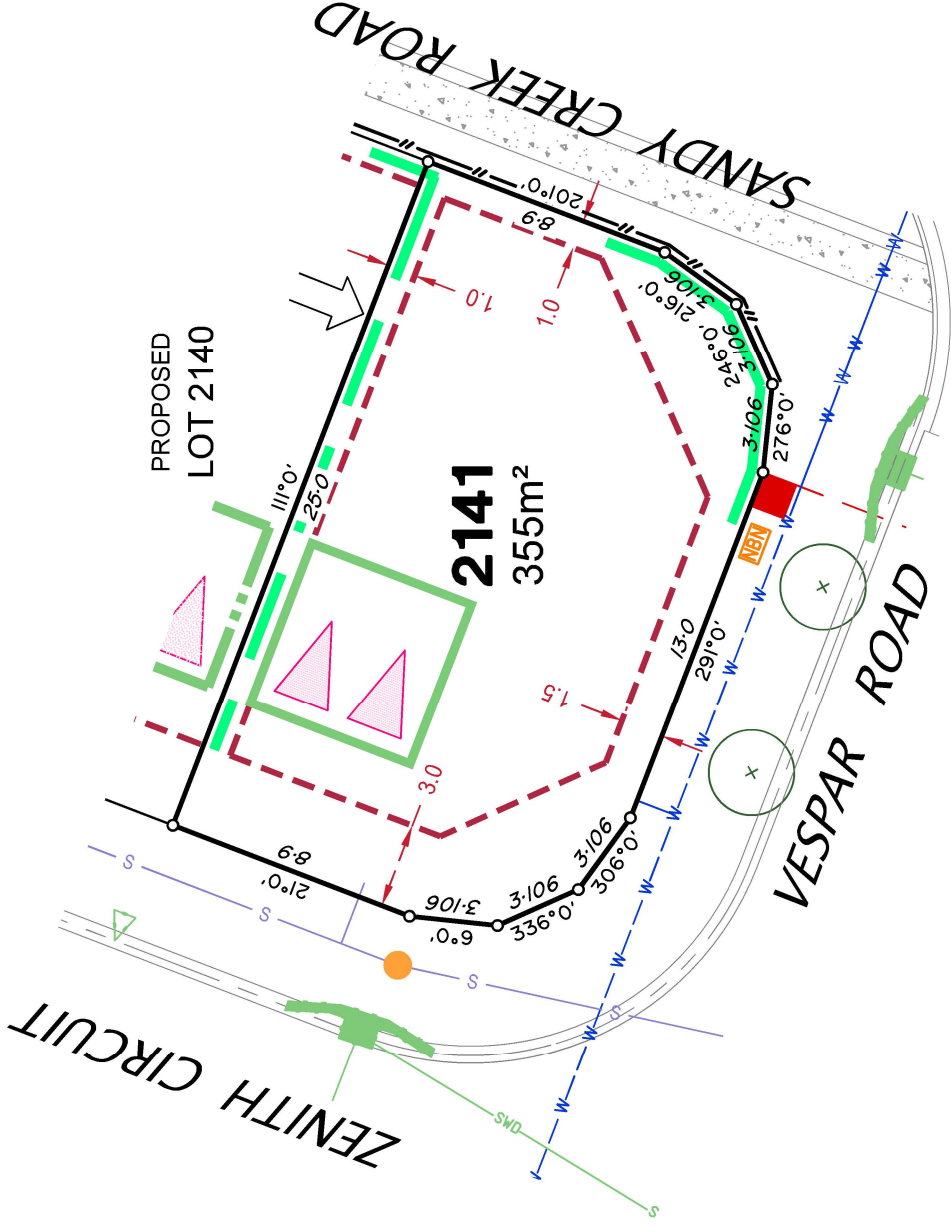
Copyright © Veris Australia Pty Ltd
May 2024

Plot Date: 09 May, 2024
 Computer File Ref: 30109-S15S-SP-(A).dwg



LEGEND

- Rock Retaining Wall shown as:-
- Sleeper Retaining Wall shown as:-
- Landscape Retaining Wall shown as:-
- Sewer line
- Sewer Manhole
- Roofwater Drainage line and Catch Pit
- Stormwater Drainage Line
- Stormwater Manhole
- Stormwater Pit
- Water Main
- Water Conduit
- Water Service Point of Entry
- Underground Electricity, Street Light, Electricity Pillar & NBN
- Developer Fencing
- Concrete Pathway
- Zero Setback Building Line
- Bin Pads
- Indicative Parking Access Location
- Landscape Street Tree
- Indicative Building Envelope



ADDITIONAL NOTES:

Allotments used as Multiple Residential Allotments in accordance with the approved Plan of Development may have a reduced primary road setback to 3.0metres as noted on the Plan of Development Table.

Compaction of any fill material placed on this site shall be completed to level one inspection and testing services in accordance with AS3798-2007.

Location of sewer, roofwater, stormwater, water reticulation and electricity lines, manholes and pits are those shown on engineering design drawings, supplied by Peak Urban and may differ from the as-constructed location.

Plan of Development information Supplied by RPS Group PLC.

Copyright © Veris Australia Pty Ltd
May 2024

Plot Date: 09 May, 2024
 Computer File Ref: 30109-S15S-SF-(A).dwg